

Product datasheet for RR213795

Serpinb2 (NM_021696) Rat Tagged ORF Clone

Product data:

Product Type:	Expression Plasmids
Product Name:	Serpinb2 (NM_021696) Rat Tagged ORF Clone
Tag:	Myc-DDK
Symbol:	Serpinb2
Synonyms:	Pai2a
Vector:	pCMV6-Entry (PS100001)
E. coli Selection:	Kanamycin (25 ug/mL)
Cell Selection:	Neomycin
ORF Nucleotide Sequence:	>RR213795 representing NM_021696 Red=Cloning site Blue=ORF Green=Tags(s)

TTTTGTAATACGACTCACTATAGGGCGCCGGAATTCGTCGACTGGATCCGGTACCGAGGAGATCTGCC
GCC**CGATCGCC**

ATGGAAGAACTGCCATGGCAAACACCATGTTTGCCTCAATCTCCTTAAGCAGATAGAACAATCGAACT
CTACCCAGAACATCTTTATTTCTCCATGGAGCATCTCATCCACATTGGCCATAGTTTTCTTGGTGTCTCA
GGCTAACACTGAAGAGCAAATGGCCAAAGTGCTGAATTTTGACAAAATTGGCAGCTACGACCTCACTCCA
GGAAACCCAGAGAACTTCCATGGCTGTGATTTTGACAAACACATACAGAGGGACAATTATCCTGTTGCTA
TTTTACAGGCACAAGCAAGAGACAAAATCCATTAGCCTTCTCCTCTCTCAGCTCGACAATCAACACACC
ACGCTTGGGAGATTATTTACTAGAAAAGTCAAACAAGCTGTTTGGAGAGAAAATCTGCAAGATTCAAAGAA
GAATACATACAACGCTGTAAGAAATATTATTCTACAGAACCAGAAGCAGTAGACTTCCTTGAATGTGCCA
ATGAAGCTAGAAAAAGATTAATTCTTGGGTTAAACTCAAACAAAGGTGAAATCCCAAACCTGCTACC
TGAAGGTTCTGTAGACGAAGACACCAAAATGGTCTGGTGAATACTATCTACTTCAAAGGACGGTGGAAA
ACTCCATTTCAGAAGAGACTTAATGGGCTTTATCCTTTCCGTGTGAATGAAAGCAAACCTGTCC
AGATGATGTACCTCCGTGAAAAGCTGAACATTGGATACATAAAGGACCTGAAGACTCAGATCCTAGAACT
TCCGTATATTGGAACATCAGTATGTTCTGTTGCTTCCGTGATGAGATCGAAGATTATCCACCCGGCTTG
GAGATGCTGAAAAGGAAATAAACTTCGATAAATTCAACAAGTGGATCAGCAAAGAGACTGGATGAAG
ATGATGTTTTGGTCTACATTCCTCAAGTTCAAACCTGGCACAACCTACGAACTCAAGCCATTCTGCAACG
CATGGGCATGGAAGATGCCTTCAACAAGGGCAAGGCCGACTTCTCGGAAATGTCTGAGAGCAATGACCTT
TTTCTTTCTGAAGTGTCCATCAAGCCACAGTAGATGTGAACGAGGAGGGCACTGTGGCAGCTGGTGGGA
CTGGGGCAGTTATGACAGGGGAACTGGTCATGGTGGTCCACAGTTTGTGGCTGATCATCCCTTTCTTTT
CTTTATCATGAACAACATTACCCGCACCATACTATTTGTTGGTAGATTCTCTCACCC

ACGCGTACGCGGCCGCTCGAGCAGAAACTCATCTCAGAAGAGGATCTGGCAGCAAATGATATCCTGGATT
ACAAGGATGACGACGATAAGGTTTAA



Protein Sequence: >RR213795 representing NM_021696
 Red=Cloning site Green=Tags(s)

MEELSMANTMFALNLLKQIEQSNSTQNIFISPWSISSTLAIVFLGAQANTEEQMAKVLNFDKIGSYDLTP
 GNPENFHGCDFAQHIQRDNYPPVAILQAQARDKIHSFSSLSTINTPRLGDYLLESANKLFGEKSARFKE
 EYIQRCKKYYSTEPEAVDFLECANEARKKINSWVKTQTKEIPNLLPEGSVDEDTKMVLVNTIYFKGRWK
 TPFQKRLNGLYFPRVNLNESKPVQMMYLREKLNIGYIKDLKTQILELPYIGNISMFLLLPDEIEDSSTGL
 EMLEREINFDFNKWISKETLDEDDVLYIPKFKLAQNYELKPILQRMGMEDAFNKGKADFSGMSESNL
 FLSEVFHQATVDVNEEGTVAAGGTGAVMTGRTGHGGPQFVADHPFLFFIMNITRILFVGRFSSP

TRTRPLEQKLISEEDLAANDILDYKDDDDKV

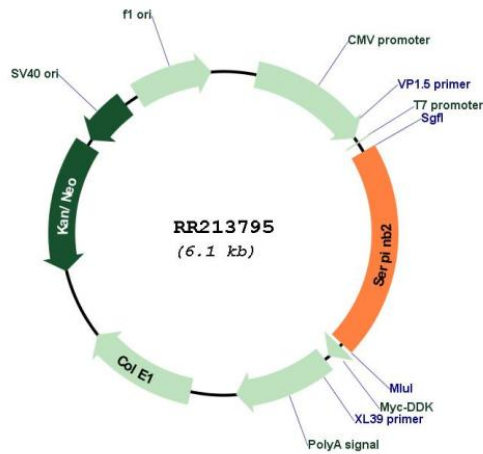
Restriction Sites:

SgfI-MluI

Cloning Scheme:



Plasmid Map:



ACCN:

NM_021696

ORF Size:	1248 bp
OTI Disclaimer:	The molecular sequence of this clone aligns with the gene accession number as a point of reference only. However, individual transcript sequences of the same gene can differ through naturally occurring variations (e.g. polymorphisms), each with its own valid existence. This clone is substantially in agreement with the reference, but a complete review of all prevailing variants is recommended prior to use. More info
OTI Annotation:	This clone was engineered to express the complete ORF with an expression tag. Expression varies depending on the nature of the gene.
Components:	The ORF clone is ion-exchange column purified and shipped in a 2D barcoded Matrix tube containing 10ug of transfection-ready, dried plasmid DNA (reconstitute with 100 ul of water).
Reconstitution Method:	<ol style="list-style-type: none">1. Centrifuge at 5,000xg for 5min.2. Carefully open the tube and add 100ul of sterile water to dissolve the DNA.3. Close the tube and incubate for 10 minutes at room temperature.4. Briefly vortex the tube and then do a quick spin (less than 5000xg) to concentrate the liquid at the bottom.5. Store the suspended plasmid at -20°C. The DNA is stable for at least one year from date of shipping when stored at -20°C.
RefSeq:	NM_021696.2 , NP_067728.1
RefSeq Size:	1942 bp
RefSeq ORF:	1251 bp
Locus ID:	60325
UniProt ID:	P29524
Cytogenetics:	13p11
MW:	47.2 kDa
Gene Summary:	plays a role in proteolytic degradation of extracellular matrices in tissue remodeling; mediates the entire process of periodontal wound healing [RGD, Feb 2006]