

Product datasheet for **RR213767**

Adcy10 (NM_021684) Rat Tagged ORF Clone

Product data:

Product Type: Expression Plasmids
Product Name: Adcy10 (NM_021684) Rat Tagged ORF Clone
Tag: Myc-DDK
Symbol: Adcy10
Synonyms: Sac
Vector: pCMV6-Entry (PS100001)
E. coli Selection: Kanamycin (25 ug/mL)
Cell Selection: Neomycin
ORF Nucleotide Sequence: >RR213767 representing NM_021684
Red=Cloning site Blue=ORF Green=Tags(s)

TTTTGTAATACGACTCACTATAGGGCGCCGGAATTCGTCGACTGGATCCGGTACCGAGGAGATCTGCC
GCC**CGGATCGCC**

ATGAGTGCCCGAAGGCAGGAATTACAGGACAGGGCAATCGTCAAGATAGCTGCTCACTTACCGACCTCA
TTGTCTATGGAGATTTCTCTCCGAGCGGCCGTCACTGAAATGTTTTGATGGAGTTCTGATGTTTGTGCGA
TATTTTCAGGCTTTACTGCAATGACTGAGAAGTTCAGCACAGCCATGTACATGGACCGAGGAGCCGAGCAG
CTGGTGGAGATCCTCACTACTACATAAGTGCGATAGTGGAGAAAGTACTGATTTTTGGAGGAGACATCC
TAAATTTGACAGGTGACGCCCTTGTGGCCCTGTGAAAGTGGAAACGAAAGCAACTGAAGAATATCATCAC
GGTGGTAATTAATGCAGCCTGGAGATTCATGGCTTGTGGAGCCAAGGAGGTTGAAGAAGGCCTGGAT
ATTCGAGTTAAGATAGGACTGGCTGCTGGCCACATCACCATGTTGGTCTTTGGGGATGAAACACGGAAC
ACTTCTGGTGATTGGCCAAGCGGTGGATGATGTACGCCCTTGCTCAGAACATGGCTCAGATGAATGATGT
TATTCTGTCACCAAACGCTGGCAGCTCTGTGATCGGAGCATGATTGAAATCGAGAGGATCCGGATCAG
AGAGCAGTTAAGGTTAGCTTCTTAAACACCCCAACTTTTAACTTCGACGAGTTTTTGGCCAAGTGTA
TGGCCTTCATGGATTATTATCCTTCTGGTGACCACAAAACCTTCTAAGGCTTGCCTGCATGCTGGAGTC
TGATCCTGAACTCGAGTTGTCTCTACAAAAGTATGTGATGGAAATCATTGAAAGCAGATTGATGACAAG
CAGCTTCGGGGCTATTTATCTGAGCTTCGTCTGTGACGATCGTGTGTTGTAAGTGGATGTTTAAAGAGC
AAGACAAAGCAGAAGTCATAGGATCAGCCATCCAAGCTGCCTGTGTGCACATCACTTCCGTCTTGAAGGT
CTTCCGAGGCCAGATCAATAAGGTCTTCATGTTTGATAAGGGCTGCTCCTCCTGTGTCTTCGGTTTC
CCTGGGAAAAGGCCCTGACGAGATCACTCACGCTTTGGAAAGTGCCGTGGATATATTCGACTTCTGCT
CTCAGGTTCCAAAAATCCGACTGTCTCCATCGGCGTCGCCAGTGGGATTGTCTTCTGTGGGATCGTTGG
ACACACTGTGAGACACGAGTACACAGTCATTGGCCAAAAGGTCAATATTGCTGCCAGGATGATGATGAT
TACCCAGGCATCGTGACCTGCGACTCTGTACATACGATGGCAGCAACCTGCCAGCTACTTTTTAAAG
AGCTTCCAAAGAAAGTCATGAAAGGAGTTGCGGATCCCGACCAGTGTATCAGTGTCTGGCCCTCAATGA
GAAAGTCATGTTTGGTATGGCCTATCTCATCTGCAACAGATATGAGGGCTACCCTTTGCTGGGTCGTGTT
AGGGAGATCGACTATTTTCATGTCTACTATGAAGGACTTCTGATGACGAACTGCAGCCGAGTTCTAATGT



ATGAAGGATTGCCAGGATATGGGAAAAGCCAGGTA CTTATGAAAATCGAGTATCTGGCCTCCCAGCATGA
 GAACCATAGGGCTGTTGCTATTGCACTGACTAAGATCAGCTTCCATCAAAATTTTACACTATCCAGATA
 CTCATGGCTAACGTAAGTCTGGATACTTGTAAACATTACAAAGAACGACAGACCAATCTTCAAATA
 GAGTCAAGACGCTGTTGGATGATAAATACCACTGTCTCCTAACGACATCTTCCATGTTCCAGTCCCCGT
 TCCCCGGGAGATGTCCAGGATGAGCAAGATAAGAAAGCAGAAGCAACTGGAAGCTCTGTTTATGAAGATC
 CTGGAGCAAACAGTGAGGGAAGAAAGGATTATCTTCATCATCGACGAGGCCAGTTTGTGGACGTAGCT
 CCTGGCCCTTCATAGAAAAGCTCATCCGGTCCATGCCATCTTCATTGTTATGTCCTGTGTCCCTCCC
 TGAAACTCCCTGCGCAGCTGCCAATGCCATAATGAAGAACCAGCAACACCCTACATCACACTCGGTACC
 ATGCAGCCTCAGGAAATCCGGGACAAGGTCTGTGTTGACCTGAGTGAAGCAGCATCCCCAGAGAGCTTG
 ACTCGTACCTGGTGGAGGGGAGCTGCGGGATTCCGTATTACTGTGAGGAACTGCTGAAAACTCGACCA
 CCACAGAAATTCATTTTCCAACAAGCAGAGGCTGAGGAAAAGACAAACGTGACCTGGAATAACCTGTT
 AAGTACTCTGTTAAGCCGACAGAAGACATGTATCTGTATACTTCCATAGCCGCGGACAGAAAGAAGCT
 GTTACCTTACAAGTGGTGTGAGACTAAGAAGTGTACCTCCAGCATCGCTCAAAGAAATCTCTGTT
 TCAACTGGACAGCATGAGCCTTCCCATCAGATGCTGGTGGTGTGCTGCTATCATTGGTCAACCTC
 ACCACAGAGCTGTGTTGAGATTCTCCCCTGCTGGAACATGAAGATGATGATCAAGGCCCTGGCCACC
 TAGTGGAATCAAATGTCTTTGATTGCTTTCCGGAGTAGCAAAGACCTTCAACTAGCCTTAAAGCAAACGT
 GACCACGTTTGAAGTTCATTATCGCTCTTTGTCCTGAAGTCCAAGGAAGGGTGTAGCTTACAGTGAGGAG
 GAGCAGCTCCGTGAAATGGAAGGAGAGGTGATTGAATGCCGCATCCTTCGGTTCTGCAGACCCATAATGC
 AGAAGACAGCCTACGAACTGTGGCTCAAGGACCAGAAGAAAGTCTTGCATCTGAAATGCGCCCGCTTTT
 GGAGGAGAGTGCCCATCGGTGCAACCCTGCAGAAACAGAGACTTCACTTACCACCCTTATAGCG
 GACATTCGACTCAACACTCTGGACATGGATACTGTCAAGAAGTGGTGAAGTCCCACGGATTTAAACTG
 AAGACGAGGTCACTTTTCTAAATCAGAGATCCCAGGAAATCAAATCCCCGAGAATCAGCATCAC
 AGAAACAAGGGAAAAAATCTTGCAATTTTGTGACAATGTTATCATAAAGATGAGGACGTCTCAGGATGAT
 GTCATCCCTCTAGAATCGTCCATTGTGAGGAGCTGCTCCAGATTGTCATCTTGCCTCTGGCCAGCAT
 TCGTAGCCTTAGAAGAAAACAACAAGCCTTGTACTACTTCTAGAACTGCATCTGCCTATCTCATCCT
 GGGAGACAATAACGCATACATGATTTGGCGAAGGGGAAAGGCTGTTGAAATCTCTGACAAATGAA
 GATTCTTGGAGTCAGACCTTTGAATATGCTACGTTTTATAGTCTCAAAGGTGAGATCTGTTTTAATAGG
 GACAGATGGTGTGCGCAAGAAAATGCTGAGAAAAGCACTGAAGCTTCTCAACAGAAATGTTTCCCTGCAA
 TCTACTCTCCCTGACTTCCAAATGCACATTGAGAAAAACAGACTCTCCCACTTCAAGACAGCATAACC
 CAGGAGGGCTCGCTGCCAGGGAAGAAGCTGGCCCAACTTTTCTGCAGTGTCTGCTTCTCCCTGCTGT
 GGAAGATCTATAGCTTGAACCTTTTCCACTACAAGTACTATGGTGTGCTGGCAGCAATAATGCAGAT
 GAACACCTCGTTAGAAACTCAAAACAATTTCCAGATCATCAAGGCTTTCCTGGACTTTTCCCTGTACCGC
 CATCTGGCTGGATACGAGGGCGTGTGGTTCAAATATGAAATCCTGGTGTGAGCAGCTCTTGAACCTCC
 CCCTGAAAGGCGAAGCCTTTGAAATCATGGCCTATGCAGCCGACGCACTGGGCCATATCAAGTCTTAAC
 CGGTCACTGGACTTGGCCATTGAATAGGCTCCCGAGCTCACAAGATGTGGTCACTTCTCCGGAATCCC
 AACAAATACCATATGGTCTCTGCAGACTGAGTAAACCTTTTCTTGAAGAGCAGATACAAGCATTGG
 TCCAGGTGCTGGGATGGTGTGGGACCTTTCTGTAAACAGAGGAGCACATCTCAGCAAGGCATTTTCTA
 TTTCTGCTGCTGGACATCATGCTTTATCTGGCTTCAATACAGAACATTTGAAGAATGTTTGAATTC
 ATACACCACAATGAAGACAACAGAATCCTCAAGTTCCAAAGCGGACTCCTCTGGACTTTACTCCTGCA
 TAGCTGTCTGGTACGCCAGACTTCAGGAATGGGACAACCTTTTACAAATTTTCCAATAGAGCGAAGACTTT
 AGTGACTCGAAGAACCCCAACGGTCTTTACTACGAAGGAATTTCTAGGTATATGGAAGGCAAGTCCCTC
 CATCTTCAAGCAAAATAGAAGAGCAGGCCGAGAATGCTCAGGACAGTGGGGTGGAGCTACTTAAGGCTT
 TAGAGACCCTTGTGGCTCAAAATACCACTGGCCCCGTCTTCTACCCAGGCTCTACCATTGATGGCCTA
 TGTCTGTATACTGATGGGAGACGGGCACAGTGTGACTTCTTCTAAACACAGCCTTGGAGCTCTGAG
 ACACAGGGGAATTTGCTGGAGAAATGTTGGCTGAGCATGAGTAAGGAATGGTGGTACTCAGCCCCGAGT
 TGACAGGAGATCAATGGCTTCAAGACAGTCTTGTGCTCCCATCGTGGGATAAAATGATCAGGCAACGT
 AACCTTCAGGATGTTCAAAGAACAATCTTGTGATGAGATTAATATTCTGGACAATCCTTTC

ACGCGTACGCGGCCGCTCGAGCAGAAACTCATCTCAGAAGAGGATCTGGCAGCAAATGATATCCTGGATT
 ACAAGGATGACGACGATAAGGTTTAA

Protein Sequence: >RR213767 representing NM_021684
 Red=Cloning site Green=Tags(s)

```
MSARRQELQDRAIVKIAAHL PDLIVYGDFSPERPSVKCFDGLMFVDISGFTAMTEKFSTAMYMDRGAEQ
LVEILNYYISAI VEKVLIFGGDILK FAGDALLALWKVERKQLKNIITVVIKCSLEIHGLFEAKEVEEGLD
IRVKIGLAAGHITMLVFGDETRNYFLVIGQAVDDVRLAQNMAQMNDVILSPNCWQLCDRSMIEIERIPDQ
RAVKVSFLKPPPTFNDFEFAKCMAMFYYPGSDHKNFLRLACMLESDPELELSLQKYVMEIILKQIDDK
QLRGYLSLRPVTIVFVNL MFKEQDKAEVIGSAIQAACVHITSVLKVFGRQINKVFMFDKGC SFLCVFGF
PGEKAPDEITHALES AVDIFDFCSQVHKIRT VSIGVASGIVFCGIVGHTVRHEYTVIGQKVNIAARMMY
YPGIVTCD SVTYDGSNLPAYFFKELPKKVMKGVADPGPVYQCLGLNEKVMFGMAYLICNRYEGYPLLGRV
REIDYFMSTMKDFLMTNCSRVLMEYGLPGYGKSQVLM EIEYLASQHENHRAVAIALTKISFHQNFYTIQI
LMANVLGLDTCKHYKERQTNLQNRVKTLLDDKYHCLLNDIFHVQFPVSREMSRMSKIRKQKLEALFMKI
LEQTVREERIIF IIDEAQFVDVASWAFIEKLIRSMPIFIVMSLCPFPETPCAANAIMKNRNTTYITLGT
MQPQEI RDKVCVDL SVSSIPRELD SYLVEGSCGIPYYCEELLKNLDHHRILIFQQAEAEKTNVTWNNLF
KYSVKPTEDMYL YTSIAAGQKEACYL TSGVRLKNL SPPASLKEISLVQLDSMSLSHQLVRCAAIIGLTF
TTELLFEILPCWNM KMMIKALATLVESNVFDCFRSSKDLQLALKQNVTTFEVHYRSLSLKSKEGLAYSEE
EQLREMEGEVIECRILRFCRPI MQKTAYELWLKDQKVLHLKCARFLEESAHRCNHCRNRDIFIPYHFFIA
DIRLNTLDMDTVKKMVKSHGFKTEDEVIFSKSEIPRKF KFPENISITETREKILHFFDNV IIKMRTSQDD
VIPLESCHEELLQIVILPLAQHFVALEENKALYYFLELASAYLILGDNYNAYMYLGEGERLLKSLTNE
DSWSQTFEYATFYSLKGEICFNMGQMVLA KKMLRKALKLLNRMFPCNLLSLTFQMHI EKNL SHFMNQHT
QEGSLPGKLAQLFLQSSCF SLLWKIYSLNFF FHYKYYGR LAAIMQMNTSLETQNNFQIIKAF LDFSLYR
HLAGYEGVWFKYEILVMEQLLNLPLKGEAFEIMAYAADALGH IKFLTGHLDLAIELGSR AHKMWSLLRNP
NKYHMVLCRLSKPLFLKSR YKHLVQVLGWLWDL SVTEEHIFSKAFFYFVCLDIMLYSGFIYRTFEECLEF
IHHNEDNRILK FQSGLLLGLYSCIAVWYARLQEWDFNYKFSNR AKTLVTRRTPTVLYYEGISRYMEGQVL
HLQKQIEEQAENAQDSGVELLKAETLVAQNTGPFVYPRLYHLMAYVCLMGDGHSCDFFLNTALELSE
TQGNLLEKCWLSMSKEWWYSAPELTGDQWLQTVLSLPSWDKIVSGNVTLQDVQKNKFLMRVNILDNPF
```

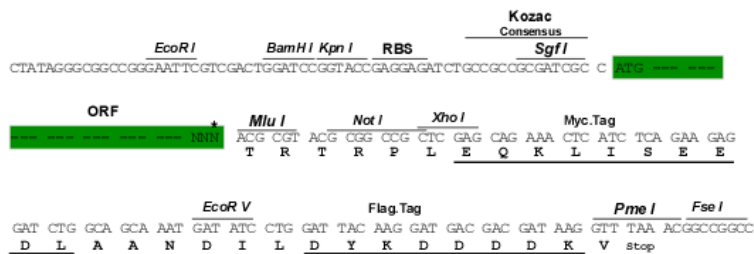
TRTRPLEQKLISEEDLAANDILDYKDDDDKV

Restriction Sites:

SgfI-MluI

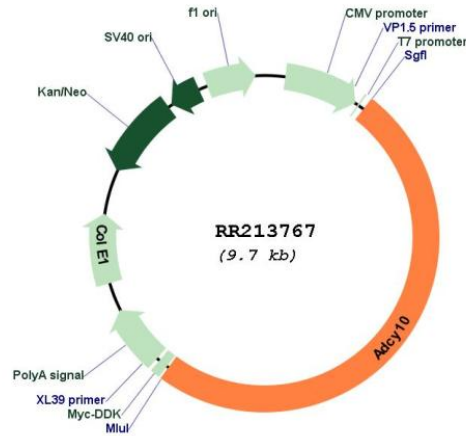
Cloning Scheme:

Cloning sites used for ORF Shuttling:



* The last codon before the Stop codon of the ORF

Plasmid Map:



ACCN: NM_021684

ORF Size: 4824 bp

OTI Disclaimer: The molecular sequence of this clone aligns with the gene accession number as a point of reference only. However, individual transcript sequences of the same gene can differ through naturally occurring variations (e.g. polymorphisms), each with its own valid existence. This clone is substantially in agreement with the reference, but a complete review of all prevailing variants is recommended prior to use. [More info](#)

OTI Annotation: This clone was engineered to express the complete ORF with an expression tag. Expression varies depending on the nature of the gene.

Components: The ORF clone is ion-exchange column purified and shipped in a 2D barcoded Matrix tube containing 10ug of transfection-ready, dried plasmid DNA (reconstitute with 100 ul of water).

Reconstitution Method:

1. Centrifuge at 5,000xg for 5min.
2. Carefully open the tube and add 100ul of sterile water to dissolve the DNA.
3. Close the tube and incubate for 10 minutes at room temperature.
4. Briefly vortex the tube and then do a quick spin (less than 5000xg) to concentrate the liquid at the bottom.
5. Store the suspended plasmid at -20°C. The DNA is stable for at least one year from date of shipping when stored at -20°C.

RefSeq: [NM_021684.1](#), [NP_067716.1](#)

RefSeq Size: 5177 bp
RefSeq ORF: 4827 bp
Locus ID: 59320
UniProt ID: [Q9Z286](#)
Cytogenetics: 13q23
MW: 185.9 kDa
Gene Summary: cytosolic adenylyl cyclase [RGD, Feb 2006]