

## Product datasheet for **RR213763**

### Gpr27 (NM\_023099) Rat Tagged ORF Clone

#### Product data:

Product Type: Expression Plasmids  
 Product Name: Gpr27 (NM\_023099) Rat Tagged ORF Clone  
 Tag: Myc-DDK  
 Symbol: Gpr27  
 Synonyms: Sreb1  
 Mammalian Cell Selection: Neomycin  
 Vector: pCMV6-Entry (PS100001)  
 E. coli Selection: Kanamycin (25 ug/mL)  
 ORF Nucleotide Sequence: >RR213763 representing NM\_023099  
 Red=Cloning site Blue=ORF Green=Tags(s)

TTTTGTAATACGACTCACTATAGGGCGGCCGGAATTCGTCGACTGGATCCGGTACCGAGGAGATCTGCC  
 GCC**CGATCGCC**

ATGGCGAACGCTAGTGAGCCGGGCGGGCGGGCGGGCGGGCCGAGGCTGCCGCGCTGGGCCTCAGGCTGG  
 CCACACTCAGCCTGCTGCTGTGCGTGAGCCTGGCGGGCAACGTGCTGTTTCGCTCTGCTCATCGTAGGGA  
 GCGCAGCCTGCACCGCGGCCTTACTACCTGCTGCTCGACCTGTGCTGGCCGACGGGCTGCGCGCGCTC  
 GCCTGTCTCCCGCCGTATGCTGGCTGCGCGGGCGGGCAGCCGCGGGGGACGCCTCCGGGTGCGC  
 TGGGCTGCAAGCTGCTGGCCTTCTGGCCGCGCTCTTCTGCTTCCACGCGGCCTTCTGCTGCTGGGCGT  
 GGGCGTACCCGCTACCTGGCCATCGCTACCACCGCTTCTATGCCGAGCGCCTGGCCGGCTGGCCGTGC  
 GCCCGATGCTGGTGTGCGCCGCTGGGCGCTGGCTTTGGCCGCGGCCTTCCCGCCGGTGTGGACGGCG  
 GTGGCGCGGACGACGAGGATGCGCCGTGCGCCCTGGAGCAGCGGGCCGACGGCGCCCCGGGTGCGTAGG  
 CTTCTGCTGCTCCTGGCCGCGGTGGTGGGCGCCACGCACCTCGTCTACCTTCGCTGCTTCTTTCATC  
 CACGACCGCCGAAGATGCGGCCCGCACGCTGGTGGCCCGCTCAGCCACGACTGGACCTTCCACGGCC  
 CGGGCGCCACCGGTCAAGCGGCCCAACTGGACGGCGGGCTTCGGCCGCGGGCCACGCCACCTGCGCT  
 CGTGGGCATCAGGCCTGCAGGCCCGGGCGGGAGCCCGGCGCCTCCTGGTGTGGAGGAATTAAGACG  
 GAGAAGAGGCTGTGCAAGATGTTCTACGCCATCACGCTGCTTCTGCTCCTCTGGGGCCCTATGTGG  
 TTGCCAGTTACCTGCGCTCCTGGTGGCGCCGGAGCTGTCCCGAGGCCTACCTGACAGCCTCGGTGTG  
 GCTGACATTGACAGGCCGGCATCAACCCCGTGGTGTGTTTCTTCAACCGGAGCTGAGGGACTGT  
 TTCAGAGCCAGTTCCTGTTGCCAGAGCCCCAGGCCACGAGCCACCCTCCCTGCGACTGAAAG  
 GCATTGGTTTG

**ACGCGT**ACGCGGGCGCTCGAGCAGAACTCATCTCAGAAGAGGATCTGGCAGCAATGATATCTGGATT  
 ACAAGGATGACGACGATAAGGTTTAA



[View online »](#)

**Protein Sequence:** >RR213763 representing NM\_023099  
Red=Cloning site Green=Tags(s)

MANASEPGGGGGAEAAALGLRLATLSLLL CVSLAGNVLFALLIVRERSLHRAPYYLLLDLCLADGLRAL  
 ACLPAVMLAARRAAAAAGTPPGALGCKLLAFLAALFCFHAAFLLLGVGVTRYLAIAHHRFYAERLAGWPC  
 AAMLVCAAALALAAAFPPVLDGGGADDEDAPCALEQRPDGAPGALGFLLLLAAVVGATHLVYLRLLFFI  
 HDRRKMRRPARLVPAVSHDWTFFHGPGATGQAAANWTAGFGRGPTPPALVGIRPAGPGRGARRLLVLEEFKT  
 EKRLCKMFYAITLLFLLWGPYVVASYLRYLVRPGAVPQAYLTASVWLTFAQAGINPVVCFLFNREL RDC  
 FRAQFPCCQSPQATQATLPCDLKGIGL

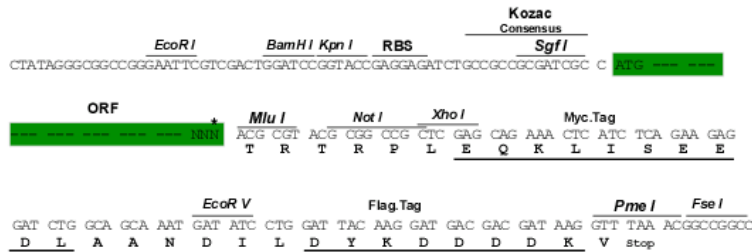
TRTRPLEQKLISEEDLAANDILDYKDDDDKV

**Restriction Sites:**

SgfI-MluI

**Cloning Scheme:**

Cloning sites used for ORF Shuttling:



\* The last codon before the Stop codon of the ORF

**ACCN:** NM\_023099

**ORF Size:** 1131 bp

**OTI Disclaimer:** The molecular sequence of this clone aligns with the gene accession number as a point of reference only. However, individual transcript sequences of the same gene can differ through naturally occurring variations (e.g. polymorphisms), each with its own valid existence. This clone is substantially in agreement with the reference, but a complete review of all prevailing variants is recommended prior to use. [More info](#)

**OTI Annotation:** This clone was engineered to express the complete ORF with an expression tag. Expression varies depending on the nature of the gene.

**Components:** The ORF clone is ion-exchange column purified and shipped in a 2D barcoded Matrix tube containing 10ug of transfection-ready, dried plasmid DNA (reconstitute with 100 ul of water).

**Reconstitution Method:**

1. Centrifuge at 5,000xg for 5min.
2. Carefully open the tube and add 100ul of sterile water to dissolve the DNA.
3. Close the tube and incubate for 10 minutes at room temperature.
4. Briefly vortex the tube and then do a quick spin (less than 5000xg) to concentrate the liquid at the bottom.
5. Store the suspended plasmid at -20°C. The DNA is stable for at least one year from date of shipping when stored at -20°C.

**RefSeq:** [NM\\_023099.1](#), [NP\\_075587.1](#)

**RefSeq Size:** 1134 bp

**RefSeq ORF:** 1134 bp

**Locus ID:** 65275

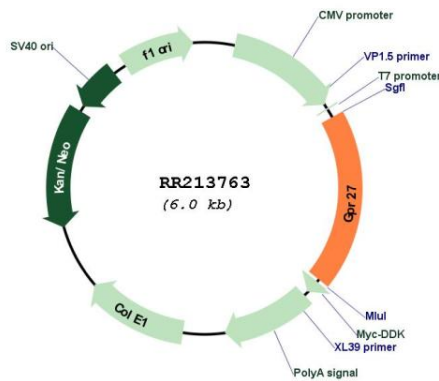
**UniProt ID:** [Q9JJH3](#)

**Cytogenetics:** 4q34

**MW:** 39.9 kDa

**Gene Summary:** member of a subfamily of G-protein coupled receptors that is highly conserved among vertebrates; may play a role in the nervous system [RGD, Feb 2006]

**Product images:**



Circular map for RR213763