

Product datasheet for **RR213750**

Sirpa (NM_013016) Rat Tagged ORF Clone

Product data:

Product Type:	Expression Plasmids
Product Name:	Sirpa (NM_013016) Rat Tagged ORF Clone
Tag:	Myc-DDK
Symbol:	Sirpa
Synonyms:	Bit; Ptpns1; SHPS-1
Vector:	pCMV6-Entry (PS100001)
E. coli Selection:	Kanamycin (25 ug/mL)
Cell Selection:	Neomycin



[View online »](#)

ORF Nucleotide Sequence:

>RR213750 representing NM_013016
 Red=Cloning site Blue=ORF Green=Tags(s)

TTTTGTAATACGACTCACTATAGGGCGGCCGGAATTCGTCGACTGGATCCGGTACCGAGGAGATCTGCC
 GCC**CGGATCGCC**

ATGGAGCCCGCCGCCGCCCTGGCCGCTAGGGCCGCTGCTGTTCTGCCTTCTGCTCTCCGCCCTCT
 GTATCTGTGCAGGAGCCAGCGGAAAGAACTGAAGGTGACTCAGGCTGACAAATCAGTGTCTGTTGCTGC
 TGGAGATTCGGCCACTCTGAAGTCACTGTGCTCCTCCCTGACGCCTGTGGACCCATTAAGTGGTTCAAA
 GGAGAAGGGCAAATCGGAGCCCGATCTACAGTTTCATAGGAGGAGAACACTTTCCTCGAATTACAAATG
 TTTTCTGACTAAGAGAAACAATATGGACTTTAGCATCTGTATCAGTAATGTCACCCCAAGAAGATGC
 TGGCACCTACTACTGTGTGAAGTCCAGAAAGGAATAGTAGGCCTGACACAGAAATTAATCTGGAGGG
 GGAACAACGCTCTATGTACTCGCAAACCTTCTCACCGAAGTATCGGGCCAGACTCCAGGGGCTCTC
 CTGGACAGACAGTGAAGTTCACCTGCAAGTCTTACGGCTTCTCTCCCGGAATATCACCTGAAGTGGCT
 CAAAAATGGGAAAGAAGTCTCCATTTGGAGACCACCTCTCCAGTAAAAGCAATGTCTCTACAACATC
 TCAGCACAGTACGCGTAAACTAAGCCCCGAGGACATTCATTCTCGGGTCACTGCGAGGTAGCCACG
 TCACCTTGAAGGACGCCGCTAATGGGACCGCTAACTTTTCTAACATCATCCGAGTTTACCCACCTT
 GAAGATCACCCAACAGCCCTGACGCCCGGAGCCAGGTGAACCTCACCTGCCAGGTGCAGAAGTTCTAC
 CCCAAGGCTCTCCAGTGAAGTGGTGGAGAATGGAACTTATCACGGACGGACAAGCCCGAGCATTTC
 CAGACAACAGGGATGGGACCTATAATTACACAAGCCTGTTCTCGTGAAGTCACTGCTCACAGAGAGGA
 TGTGGTATTCAGTGCCAGGTGGAGCATGACAGTACGCCAGCGATCACCGAAAACCATACCGTCCGGGCA
 TTTGCCCACTCGAGTAGTGGAGGCAGCATGGAACCATCCCTGATAATAATGCTTACTACAAGTGAACG
 TCTTCATCGGTGTGGGTGTGGCGTGTCTTTGCTAGTAGTCTGATGGCTGCCCTCTACCTCCCG
 AATCAAACAGAAGAAAGCCAAGGCTCAACTTCTTCCACACGGTTGCACGAGCCCGAGAAGAATGCCAGG
 GAAATAACCCAGATCCAGGACACAAATGACATCAACGACATCACATACGAGACCTGAATCTGCCAAAG
 AGAAGAAGCCCGCCCCCGGGTCCCGAGCCCAACAACCACAGAAATATGCAAGCATTGAGACAGGCAA
 ACTGCCTAGGCCAGAGGATACCTCACCTATGCTGACCTGGACATGGTCCACCTCAACCGGGCACAGCCA
 ACCCCCAAGCCTGAGCCATCCTTCTCAGAGTATGCCAGTGTCCAAGTCCAGAGGAAG

ACGCGTACGCGGCCGCTCGAGCAGAAACTCATCTCAGAAGAGGATCTGGCAGCAAATGATATCCTGGATT
 ACAAGGATGACGACGATAAGGTTTAA

Protein Sequence:

>RR213750 representing NM_013016
 Red=Cloning site Green=Tags(s)

MEPAGPAPGRLGPLLFCLLL SASCICAGASGKELKVTQADKSVSVAAGDSATLNCTVSSLTPVGPWKWFK
 GEGQNRSPYISF IGGEHFPRITNVSDATKRNMDFSICISNVTPEAGTYCVKFKGIVEPDTEIKSGG
 GTTLYVLAKPSSPEVSGPDSRSGSPGQTVNFTCKSYGFSRPNITLKWLNKNGKELSHLETTISSKSNVSYNI
 SSTVSVKLSPEDIHSRVICEVAHVTLGRPLNGTANFSNIIRVSPTLKITQOPLTPASQVNLTCQVQKFY
 PKALQLNWL ENGLSRTDKPEHFTDNRDGTNYTSLFLVNSSAHREDVVF TCQVEHDSQPAITENHTVRA
 FAHSSSGSMETIPDNNAYYNWNVFIGVGCALLVLLMAALYLLRIKQKAKGSTSSTRLHEPEKNAR
 EITQIQDTNDINDITYADLNLPKEKKPAPRVPEPNNHTEYASIIETGKLRPEDTLTYADLDMVHLNRAQP
 TPKPEPSFSEYASVQVQRK

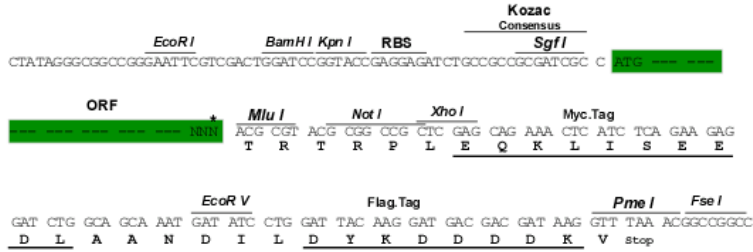
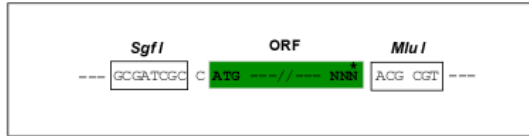
TRTRPLEQKLISEEDLAANDILDYKDDDDKV

Restriction Sites:

Sgfl-MluI

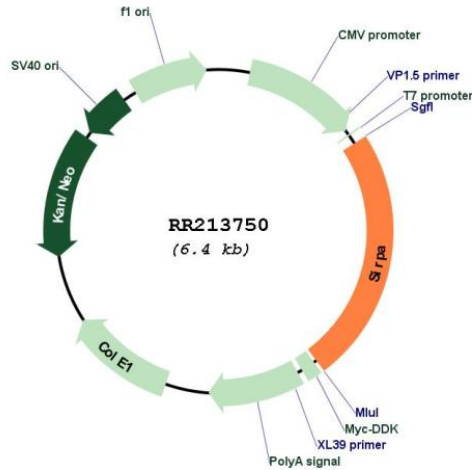
Cloning Scheme:

Cloning sites used for ORF Shutting:



* The last codon before the Stop codon of the ORF

Plasmid Map:



ACCN: NM_013016

ORF Size: 1527 bp

OTI Disclaimer: The molecular sequence of this clone aligns with the gene accession number as a point of reference only. However, individual transcript sequences of the same gene can differ through naturally occurring variations (e.g. polymorphisms), each with its own valid existence. This clone is substantially in agreement with the reference, but a complete review of all prevailing variants is recommended prior to use. [More info](#)

OTI Annotation: This clone was engineered to express the complete ORF with an expression tag. Expression varies depending on the nature of the gene.

Components: The ORF clone is ion-exchange column purified and shipped in a 2D barcoded Matrix tube containing 10ug of transfection-ready, dried plasmid DNA (reconstitute with 100 ul of water).

Reconstitution Method:

1. Centrifuge at 5,000xg for 5min.
2. Carefully open the tube and add 100ul of sterile water to dissolve the DNA.
3. Close the tube and incubate for 10 minutes at room temperature.
4. Briefly vortex the tube and then do a quick spin (less than 5000xg) to concentrate the liquid at the bottom.
5. Store the suspended plasmid at -20°C. The DNA is stable for at least one year from date of shipping when stored at -20°C.

RefSeq: [NM_013016.2](#), [NP_037148.2](#)

RefSeq Size: 3880 bp

RefSeq ORF: 1530 bp

Locus ID: 25528

UniProt ID: [P97710](#)

Cytogenetics: 3q36

MW: 55.7 kDa

Gene Summary: plays a role in macrophage fusion [RGD, Feb 2006]