

Product datasheet for **RR213661**

Ssh2 (NM_001107024) Rat Tagged ORF Clone

Product data:

Product Type: Expression Plasmids
Product Name: Ssh2 (NM_001107024) Rat Tagged ORF Clone
Tag: Myc-DDK
Symbol: Ssh2
Vector: pCMV6-Entry (PS100001)
E. coli Selection: Kanamycin (25 ug/mL)
Cell Selection: Neomycin
ORF Nucleotide Sequence: >RR213661 representing NM_001107024
Red=Cloning site Blue=ORF Green=Tags(s)

TTTTGTAATACGACTCACTATAGGGCGGCCGGGAATTCGTCGACTGGATCCGGTACCGAGGAGATCTGCC
GCC**CGATCGCC**

ATGACCCTTAGCACTTTGGCCGACGAAAGGAAAGCGCCCTGCCAGCACCTGCAGCCTCGGTGGCCCCG
ACATGATCCCCTACTTCTGCCAATGCGGTTATCTCGCAGAACGCCATCAACCAGCTCATCAGCGAGAG
CTTTTTAACTGTCAAAGGTGCTGCCCTTTTTCTACCAGAGGGAATGGCTCGTCTACACCAGCAATCAGC
CACAGACGCAACAAGCATGCAGGAGATCTCCAACAGCATCTTCAAGCAATGTTTCATATTACTCCGCCAG
AAGACAACATAAGGCTGGCTGTAAGACTGGAAAGTACTTACAAAAATCGAACACGCTATATGGTAGTGGT
TTCAACTAACGGTAGACAAGACTGAAGAAAGCATTGCTCTGGGAATGGATTTTTCTTCTAATGACAGT
AGCACTGTACCATGGGCTTGGCTTGCCTCTCTGGAGCGACACCCTAATTCATTTGGATGGTGTGGTG
GGTTCAGCGTGTCAACAGATAACAGAGTTCACATATTCAAGCCTGTATCTGTGCAAGCAATGTGGTCTGC
ACTACAGAGTTTGCACAAAGCTTGTGAAGTGGCCAGGATGCATACTACTATCCAGGCAGCCTTTTTCTC
ACTTGGGTGAGTTACTATGAGAGCCACATAAACTCAGACCAGTCCTCAGTCAACGAATGGAATGCTATGC
AGGATGTGCAGTCTCATCGGCCTGACTCTCCGGCCCTTTCACAGACATACCAACTGAACGTGAGCGAAC
AGAAAGGCTTATTAAGACTAAGTTAAGGGAGATTATGATGCAAAAAGGATTTGGAGAATATCACATCCAAA
GAGATACGCACAGAAGTGGAAATGCAGATGGTGTGCAACTTGGCGGAGTTTAAGGAGTTCATAGATAACG
AGATGATCGTGATCCTGGGTGAGTGGACAGTCCGACCCAGATATTTGAGCACGTGTTTCTGGGCTCAGA
ATGGAATGCGTCAAACCTAGAGGACTTGCAGAACCAGGGGTGCGGTATATTTTGAATGTCACTCGAGAG
ATAGATAACTTCTTCCCTGGAGTCTTTGAGTATCATAACATTCGAGTATATGATGAAGAGGCAACAGATC
TCCTGGCTTACTGGAATGACACTTACAAATTCATCTCTAAAGCAAAGAAACATGGATCTAAATGTCTTGT
GCACTGCAAAAATGGGGGTGAGTCGCTCAGCCTCCACTGTGATTGCCTATGCGATGAAGGAGTATGGATGG
AATCTGGATCGCGCTATGAGTACGTGAAGGAACGACGAAACAGTACCAAGCCCAACCCAGCTTCATGA
GACAACTAGAAGAATACCAAGGGATCTTGTCTGGCCAGCAAACAGCGGCATAACAAACTCTGGAGATCTCA
TTCAGATAGTGACCTCTCAGACCACCACGAACCCATCTGTAAACCTGGGCTCGAGCTCAACAAGAAGGAG
ATGACCACTTCAGCAGACCAGATCACTGAGGTGAAGACTGTGGAGAGCCTTGCAGCCATGCCTCCCGTCT
TCATGGAACATGTGGTCCACAAGATGTAATCAGAAAGGACTGCGCACCAAGAAAGAGTCATCTGCTT
GGAGTTTTCTTCAAGAGTTTCATGCCGCCAGATTGAAGATGAATTAACCTTAAATGACATTAATGGA



[View online >](#)

TGCTCGTCAGGGTGTGTCTCAGCGAATCAAAATTCCTCTTGACAACCTGCCATGCATCTAAAGCCTTAC
TCCAACCTGGACAGGCCCGGACATTGCCAACAAGTTCCTCGGACTTAGCGGTGGAAGACTTGAGACAGA
TGCACTGAAAGCAGACGTGAGGGTCCACTTACTGCCAATGGAAGAGTTGACATCGAGACTGAAAGACCTC
CCTATGTCACCTGATCTGGAGTCACCAAGCCCCAAGCCGGTTGCCAAGCTGCCATCTCTGATTTTAGTA
CAGATCGCATTGATTTTTTGTAGTCCCTAGAGAAATTTGTAGAGCTTTCTCAGGAAACCCGGTCTCGGTCT
TTTTTCTCACTCAAGGATAGAAGAATTAGGAGGAGGAAGGAGCGAGGGCTGTCGCTGTCCGTGATGGAA
ATGGCACCTTCAGAAATGGTGACTGATGACCAGAGAAGCAGCTCTTTGAGTGATACTCCCCACGCATCTG
AAGAGTCTTCTGTGGATGAGGACCAGCCGAAGGCAGTCTCAGAACTTGTAGCCAGACATCATATGCA
ATCTCACTCAGAAAATGCAATTTCACTCAAGAAATTGCACTGAAATTGAGTCCATTAGTCAAGGAGTT
GGCAGGTTTCAAGTAAAAGGAGACATCCTCTTAACCCATGCCATACACCAAAGAAGAATCATTTCATG
AGCTGCCCTGGAGAGAGTACAAGGCCCTGAGAACAACCTGGACATTTGGAGCAGGATGAGAGTTTCTG
TAGTGTCCAAGTGAAGTGAAGGAGACTCGGGGAAGTGTGCCCCAGAGGAGGGCTGTCTGGCCACACTC
TCGTCCACAGGAGACTTGAAGAAGAGGAACCAGTTGAGGGTGAACATGACTGGGCCCAGGGACACACC
CTGGTCCAAAGTGGTCCCTGGTCTGTGAGGCGAGCCACCCTGGAGTTGAAGAGCGCTTGCACAAAG
GCAGGAGAACCATGGGACAGCCTCTCCAGTCCCAGTTATCCAATCGCAAAAACCTAAGAATGACTCT
TCTGTGGCAGACCTAATGCCAAAATGAAAAGCGATGAAACCCGCTCAGAGCATTCACTTCCCCCAAGG
AAGCCGAGCCCGCAAGGGTAAAGGGAAGTGCAGTGGCTCTGAGGCCGGACCCCTGTCCACTGTGAGCA
TAATCCCCTGTGTCAGCCCCCAGCTGTGGAGCATCACCCCTCGCCAGCTCCTCAGGACTGCCTGGGG
TCAGAGAGCAGAAGTGAAGCAGGAAGAAGACCTGAGGAAGCAGAGGACTGTGGTTTCAAACAGGAAT
GTGAGACACAGGCCCGCCCTTCTCCCTCCCAAGAAAATAGAAATCATTGAGTATACCCAACAGTTAC
ATCACTTGATCACACTGAGCCAGGAGGTGAGACAACCCAGCAAAGAGAGTGAGAAGCAAGAGCTGAGG
AAGGTGAAGATGGAGAGGTCTATCACTATGTTTTGCACTCTGGATGAAAATCTGAACAGGACTCTGGACC
CCAGTCAGGTTTCTCTGCGTCCCAAGTGCTACCTCTGCCTCATCTTCCCTCTGAGTATGACAGGCTCAC
TGACCCAACCCCTATGTTAAGTAGCCCTCAAGACAAGGGGACAGCCCATCCACACCCTCAAGACACCA
GGCGTTTTGTCGTTGTCAGTACCAAGGAGCATCTGTCAGCTTGGATTGTTTCGCATCGCCATTCTGTGC
TTCACCTGGAAGGCTGCACAGAGCAAAGCAGTACCACAGACAGCAGACTGTCTCAGAGCACATGAACTG
GGAGGACAGCCAGGGGACTTCCCTTCCAGTAGTACTGGAATGGCACACACGCTCCTCCATTAACAAAT
GAAGACCTAAGTTTAAATTAACAACTTGGTGACAGTGTGGCGTGTACCGAAAAAAGTGGATCCATCAC
CGAAGCCTGTCGAATCCACATAGCTCTAGTAGTAAAAATAAGAGATCTCAGCCACGGCCCTGGTGT
GGTGAAGGAGCATGCTAAAGAAATTGAGCCTCGAGTATCTCCAGGCGGCTTCTCAAAAACATCACAA
ATGAGGCGCTCAGCTTCCCTGCGCAAGTTGGGTTACCTGGACCTTGTAAAGACTACTTACCGGATAGAG
AGCTTGGCTCCTCAGAATCCCCTCATCTCAAATGCTTACGCCCTTCCAGAACAGACTCAGGCATGCA
TGCCCTGATGGTCCATGAGCCCTCAGAAAGCCAGGTGCCACCCAAACCCACAGCCCAACCAAGTATTTT
GTAGAGCAACTCAAAACAACAGAGTGTGTTGTGTCAGAGCAAGCCAGTGGAGAGGCCCATGTGCAGTATG
CCAAAGAGTTTGGTTTCACTCAGCAGTGTGTTGCTCCCAAGGCAAGACCAGAATTGACTAGTTTGAAGG
AGGCCTTCTTTGCTACAGACACAGGCTGTGAGTATCCAGGCCCTCTCCAGGGCTGGCTGTGGCTCCC
CGTCAGCAGCATGGCAGGACTCACCCGCTTAGGAGACTAAAAGAGCAAAATGATAAAAAACGGACAACCA
ACCCCTTCTATAACACCATG

ACGCGTACGCGGCGCTCGAGCAGAACTCATCTCAGAAGAGGATCTGGCAGCAATGATATCCTGGATT
ACAAGGATGACGACGATAAGGTTTAA

Protein Sequence: >RR213661 representing NM_001107024
 Red=Cloning site Green=Tags(s)

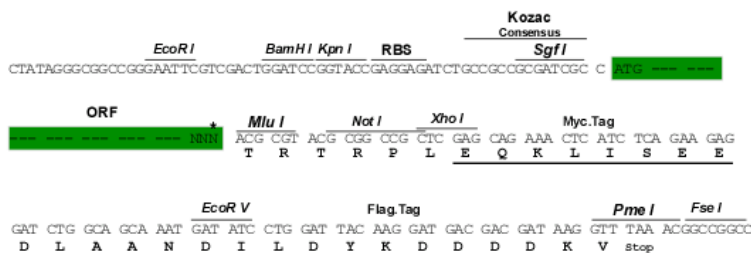
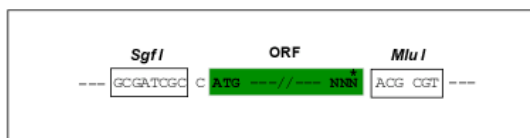
MTLSTLADERKAPPASTCSLGGPDMIPYFSANAVISQNAINQLISESFLTVKGAALFLPRGNGSSTPRIS
 HRRNKHAGDLQQHLQAMFILLRPEDNIRLAVRLESTYQNRTRYMVVVSTNGRQDTEESIVLGMDFSSNDS
 STCTMGLVPLWSDTLIHLDDGGFVSVDNRVHIFKPVSVQAMWSALQSLHKACEVARMHNYYPGSLFL
 TWVSYYESHINSQSSVNEWNAMQDVQSHRPDSPALFTDIPTERERTERLIKTKLREIMMQKDLENITSK
 EIRTELEMQMVNCLREFKEFIDNEMIVILGQMDSPQTIFEHVFLGSEWNANLEDLQNRGVRYILNVTRE
 IDNFFPGVFEYHNIRVYDEEATDLLAYWNDTYKFIKAKKHGSKCLVHCKMGVSRASASTVIAYAMKEYGW
 NLDRAIEYVKERRTVTKPNPSFMRQLEEYQGILLASKQRHNKLWRSHSDSDLSDHHEPICKPGLELNKKE
 MTTADQITEVKTVESLAAMPPVMEHVVPQDVNQKGLRTKERVICLEFSSQEFHAGQIEDELNLNDING
 CSSGCCLSESKFPLDNCHASKALLQPGQAPDIANKFPDLAVEDLETDAKADVRVHLLPMEELTSRLKDL
 PMPSPDLESPQAGCQAISDFSTDRIDFFSALEKFVELSQETRSRFSHSRIEELGGGRSEGCRLSVME
 MAPSEMVTDDQRSSSLSDTPHASEESSVDEDQPKAVSELVSPDIIMQSHSENAISVKEIVTEIESISQGV
 GQVQLKGDILSNPCHTPKKNIIHELPLERVQGPENKPGHLEQDESFCVQLELARDSGKCAPEEGCLATL
 SSTGDLEEEEPVEGEHDWGPHTPGAKWCPGSVRRATLEFEERLRQEQENHGTASPGPTLSNRKNSKND
 SVADLMPKWSDETAHEHSLSPKEAEPGKGGKCSGSEAGPLSHCEHNPAAAAPQLLEHHPSPAPQDCLG
 SESRSEKQEEELRKQRTVVSNQECETAALLPLPKKIEIEIETPTVTSLDHTEPGGETTPSKESEKQELR
 KVKMERSITMFCITDENLNRTLDPQVSLRPQVLPPLPHSSEYDRLDTPMPMLSSPQDKGDSPTPFKTP
 ARLVGCSTQGASVSLDCSRHSVLHLEGCTEQSSTTDSRLSSEHMNWEDSQGDFLSSSTGMAHTSSPLTN
 EDLSL INKLGDSVGLPKKLDPSPEACRIPHSSSENIRDL SHGPGVVKEHAKEIEPRVIFQAAF SKTSQ
 MRRSASLAKLGYLDLCKDYLPDRELGSSESPHLKLLQPFLRTDSGMHALMVHEPSESPGAHPNPQPTKYF
 VEQLKTTTECVVQSKPVERPHVQYAKEFGFSQCCLLPKARPELTSSEGLPLLQTQGLQYPGSPGLAVAP
 RQQHGRTHPLRRLKRANDKKRTTNPFYNTM

TRTRPLEQKLISEEDLAANDILDYKDDDDKV

Restriction Sites:
Cloning Scheme:

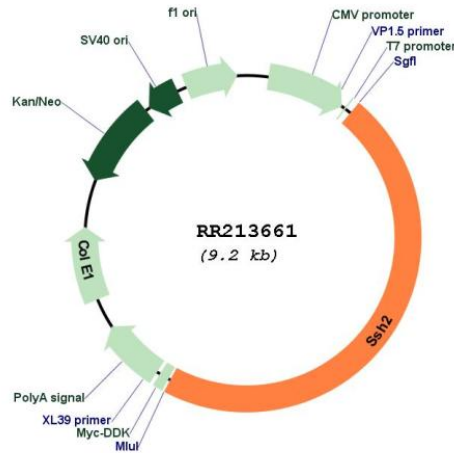
SgfI-MluI

Cloning sites used for ORF Shuttling:



* The last codon before the Stop codon of the ORF

Plasmid Map:



ACCN: NM_001107024

ORF Size: 4290 bp

OTI Disclaimer: The molecular sequence of this clone aligns with the gene accession number as a point of reference only. However, individual transcript sequences of the same gene can differ through naturally occurring variations (e.g. polymorphisms), each with its own valid existence. This clone is substantially in agreement with the reference, but a complete review of all prevailing variants is recommended prior to use. [More info](#)

OTI Annotation: This clone was engineered to express the complete ORF with an expression tag. Expression varies depending on the nature of the gene.

Components: The ORF clone is ion-exchange column purified and shipped in a 2D barcoded Matrix tube containing 10ug of transfection-ready, dried plasmid DNA (reconstitute with 100 ul of water).

Reconstitution Method:

1. Centrifuge at 5,000xg for 5min.
2. Carefully open the tube and add 100ul of sterile water to dissolve the DNA.
3. Close the tube and incubate for 10 minutes at room temperature.
4. Briefly vortex the tube and then do a quick spin (less than 5000xg) to concentrate the liquid at the bottom.
5. Store the suspended plasmid at -20°C. The DNA is stable for at least one year from date of shipping when stored at -20°C.

RefSeq: [NM_001107024.1](#), [NP_001100494.1](#)

RefSeq Size: 6343 bp

RefSeq ORF: 4293 bp

Locus ID: 303342

Cytogenetics: 10q24

MW: 159.3 kDa