

Product datasheet for **RR213604**

Map3k3 (NM_001107058) Rat Tagged ORF Clone

Product data:

Product Type:	Expression Plasmids
Product Name:	Map3k3 (NM_001107058) Rat Tagged ORF Clone
Tag:	Myc-DDK
Symbol:	Map3k3
Vector:	pCMV6-Entry (PS100001)
E. coli Selection:	Kanamycin (25 ug/mL)
Cell Selection:	Neomycin



[View online »](#)

ORF Nucleotide Sequence:

>RR213604 representing NM_001107058
 Red=Cloning site Blue=ORF Green=Tags(s)

TTTTGTAATACGACTCACTATAGGGCGGCCGGAATTCGTCGACTGGATCCGGTACCGAGGAGATCTGCC
 GCC**CGGATCGCC**

ATGGATGAACAAGAGGCATTAGACTCAATCATGAAGACCTGGTGCCCTCCAGATGAGCCGACGTCCCC
 GGGTGTCTGGATATGAGACCATGAAGAACAAGGACACAGGTCACCCAAACAGGCAGAGTGACGTCAGAAT
 CAAGTTTGAACACAATGGGGAGAGACGAATTATAGCATTAGCCGGCCTGTGAGATATGAAGATGTGGAA
 CACAAGGTGACAACGGTCTTTGGGCAGCCTCTTGATTTGCATTATATGAATAATGAGCTCTCCATCTGT
 TGAAAAACCAAGATGATCTCGATAAAGCAATTGACATTTGGATAGAAGCGCGAGTATGAAAAGCCTTAG
 GATACTACTGTTATCCCAAGACAGAAACCATACTAGTTCCTCTCCCACTCTGGAGTGTCCAGGCAGGTT
 CGGGTCAAGCCTCCCAGTCTGCAGGGGATATAAATACCATCTACCAAGCTCCTGAGCCAGAAGCAGGC
 ACCTCTCTGTGAGTCCCAGAACCTGGCCGAAGCTCTCCTCCCCTGGTTATGTACCTGAGCGACAACA
 GCACATTGCCCGCAGGGATCATATACGAGCATCAATAGTGAAGGTGAATTCATCCAGAGACCAGCGAG
 CAGTGCATGCTAGATCCCTGAGCAGTGCCGAAAATTCCTTGTGAGGAAGCTGCCAATCCTTGGACAGGT
 CAGCAGACAGCCATCTTTCAGGAAATCACAATGTCCCGAGCCCGGAGCTTCCAGACAACAGAAAGGA
 ATGCTCGGATCGGGAGACCCAGCTCTATGATAAAGGAGTTAAAGGCGAACCTATCCAGGCGTTACCAT
 GTATCTGTGCATCAAAAGACTACAATGATGGCAGAAGAAGCTTCCCGAATACGACGGCACCAGGGCA
 ACCTATCACTCTGGTGCCTCAAGTCGCTCCTTGAGCACAAATGGCGAGAACATGGGTGCCGCTGTGCA
 GTACTTGGACCCCGGGCGCCTACGGAGTGCAGACAGTGAAAATGCCCTCACTGTGCAGGAAAGAAGT
 GTGCCAACCAAGTCTCCTAGTCTCCATCAATTGGCGTCGGGGGAAGCTCCTGGGTCAAGGTGCCTTCCG
 GCAGGGTCACTTATGCTATGATGTGGACACAGGACGTGAACCTTCTTAAGCAGGTTCAAGTTTGACCC
 AGATAGTCTGAGACTAGCAAGGAGGTGAGTGTCTGGAGTGCAGATCCAGTTGCTGAAGAACTTGCCAG
 CATGAGCGCATCGTGCAGTACTATGGCTGCCTGCGGGACCGTGCTGAGAAGATCCTCACCATCTTTATGG
 AGTATATGCCAGGGGCTCTGTAAAAGACCAGTTGAAGGCTACGGAGCTCTGACGGAGAGTGTGACCCG
 CAAGTATACAGGCAGATCCTGGAGGCATGCTCTACCTGCACAGCAACATGATCGTGCATCGTGACATC
 AAGGGAGCCAATATCCTCCGAGACTCGGCTGGGAATGTGAAGCTTGGGGATTTGGGGCCAGCAAACGCC
 TGCAAACCATCTGCATGTGAGGACAGGCATGCGCTCTGCTACTGGCACACCCTACTGGATGAGTCTGA
 AGTCATCAGTGGCGAGGGCTATGGAAGAAAGGCAGATGTGTGGAGCCTGGGCTGTACCGTGGTGGAGATG
 CTGACAGAGAAACCACTTGGGCAGAGTATGAAGCTATGGCTGCCATTTCAAGATTGCCACCCAGCCTA
 CCAATCCTCAGCTGCCCTCTACATCTCAGAACACGGCAGGGACTTCTGAGGCGCATATTTGTGGAAGC
 TCGTCAGAGACCTCGGCTGAGGAGCTGCTCACACACCCTTTGCACAGCTAGTGTAC

ACGCGTACGCGGCCGCTCGAGCAGAACTCATCTCAGAAGAGGATCTGGCAGCAAATGATATCCTGGATT
 ACAAGGATGACGACGATAAGGTTTAA

Protein Sequence:

>RR213604 representing NM_001107058
 Red=Cloning site Green=Tags(s)

MDEQEALDSIMKDLVALQMSRRPRVSGYETMKNKDTGHPNRQSDVRIKFEHNGERRIIAFSRPVRYEDVE
 HKVTTVFQPLDLHYMNNELSILLKNQDDLDKAIIDILDRSASMKSLRILLLSQDRNHTSSSPHSGVSRQV
 RVKPSQSAGDINTIYQAPEPRSRHLSVSSQNPGRSSPPPGYVPERQQHIARQGSYTSINSEGEFIPETSE
 QCMLDPLSSAENSLSGSCQSLDRSADSPFRKSQMSRARSFPDNRKECSDRETQLYDKGVKGGYPRRYH
 VSVHKKDYNDGRRTFPRIRRHQGNLFTLVPSRSLSTNGENMGAAVQYLDPRGRLRSADSENALTVQERS
 VPTKSPSAPINWRRGKLLGQGAFGRYVLYCYDVTGRELASKQVQFDPDSPETSKEVSALECEIQLLKNLQ
 HERIVQYYGLDRDRAEKILTFMEYMPGGSVKDQLKAYGALTESVTRKYTRQILEGMSYLHSNMIVHRDI
 KGANILRDSAGNVKLGDFGASKRLQICMSGTGMRSVTGTPYWMSPEVISGEGYGRKADVWSLGTVVEM
 LTEKPPWAEYEAMAAIFKIAIQPTNPQLPSHISEHGRDFLRRIFFEARQRPSSAEELLTHHFAQLVY

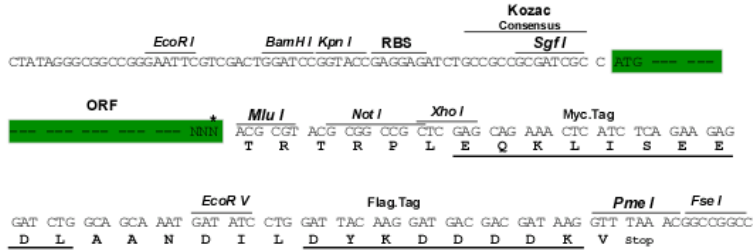
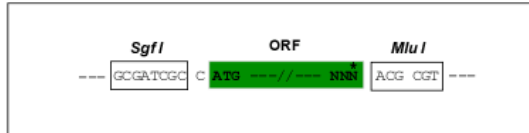
TRTRPLEQKLISEEDLAANDILDYKDDDDKV

Restriction Sites:

Sgfl-Mlul

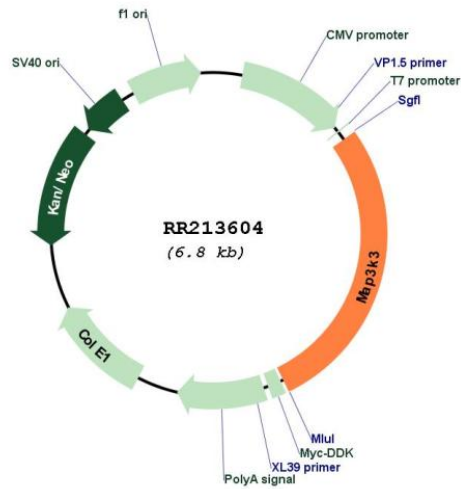
Cloning Scheme:

Cloning sites used for ORF Shutting:



* The last codon before the Stop codon of the ORF

Plasmid Map:



ACCN: NM_001107058

ORF Size: 1878 bp

OTI Disclaimer:	The molecular sequence of this clone aligns with the gene accession number as a point of reference only. However, individual transcript sequences of the same gene can differ through naturally occurring variations (e.g. polymorphisms), each with its own valid existence. This clone is substantially in agreement with the reference, but a complete review of all prevailing variants is recommended prior to use. More info
OTI Annotation:	This clone was engineered to express the complete ORF with an expression tag. Expression varies depending on the nature of the gene.
Components:	The ORF clone is ion-exchange column purified and shipped in a 2D barcoded Matrix tube containing 10ug of transfection-ready, dried plasmid DNA (reconstitute with 100 ul of water).
Reconstitution Method:	<ol style="list-style-type: none"> 1. Centrifuge at 5,000xg for 5min. 2. Carefully open the tube and add 100ul of sterile water to dissolve the DNA. 3. Close the tube and incubate for 10 minutes at room temperature. 4. Briefly vortex the tube and then do a quick spin (less than 5000xg) to concentrate the liquid at the bottom. 5. Store the suspended plasmid at -20°C. The DNA is stable for at least one year from date of shipping when stored at -20°C.
RefSeq:	NM_001107058.2 , NP_001100528.1
RefSeq Size:	4640 bp
RefSeq ORF:	1881 bp
Locus ID:	303604
Cytogenetics:	10q32.1
MW:	70.7 kDa