

Product datasheet for RR213575

Dip2c (NM_001107360) Rat Tagged ORF Clone

Product data:

Product Type: Expression Plasmids
Product Name: Dip2c (NM_001107360) Rat Tagged ORF Clone
Tag: Myc-DDK
Symbol: Dip2c
Synonyms: RGD1560155
Vector: pCMV6-Entry (PS100001)
E. coli Selection: Kanamycin (25 ug/mL)
Cell Selection: Neomycin
ORF Nucleotide Sequence: >RR213575 representing NM_001107360
 Red=Cloning site Blue=ORF Green=Tags(s)

TTTTGTAATACGACTCACTATAGGGCGCCGGGAATTCGTCGACTGGATCCGGTACCGAGGAGATCTGCC
 GCC**CGATCGCC**

ATGGCGGACCGCAGCCTGGAAGGCATGGCTCTGCCGTTGGAGGTGAGGGCCCGGCTGGCCGAGCTGGAGC
 TGGAGCTGTCGGAAGGTGACATTACACAAAAGGGATATGAAAAGAAGAGGTCAAATTAATTGGAGCCTA
 CCTTCCCAGCCTCCAACAGCGAATGGAGCTGCCGTGGTTCGGTGTAGACTGCAGCCCGGTGAAGCGTT
 CCGAGGAGACCTTCCGCTCTGCCACATCGGGGTGTGCGACATCCGAGAAGCTGCAGCCGGGAGCGGG
 CGGCCAGTGCAGCGGGGAACCGCCTCTGTTTTACTTTTCGTTTCGGAGTGGACCAAGCTCTGCCTCAAGA
 GCGACGTGCACCCGTCCTCTCCTCAGCTTCTCGCTACCACCGCCGAAGATCCTCAGGGTCTCGAGAT
 GAACGTTATCGGTGAGATGTTTACAGAAAGCTGTCCAGGCAGCTCTTGCTAAACACAAAGAAAGGAAGA
 TGGCAGTCCCATGCCTTCCAACGAAGATCCCTGGTTGTACAGACCTCCATGGATGCCTACACTCCCC
 AGATACCTCTCCGGTTCAGAAGATGAAGGCTCAGTGCAGGGTGAATCCAGGGAACCCCACTTCTAGC
 CAGGGCAGCATCAACATGGAGCATTGGATCAGTCAGGCCATCCATGGCTCTACCACATCAACAACCTCCT
 CCTCCTCACTCAGAGTGGGGCAGTGGGGCAGCACACCGGCTGGCAGATGTCATGGCCAGACACAT
 AGAAAATCATTCTGCACCTCCTGATGTAACCACATACACCTCAGAACACTCAATACAAGTGGAAAGGCCA
 CAGGGCTCTACCACATCCCGACAGCACAAAGTATGGCAATGCTGAGCTCATGGAGACTGGGGATGGTG
 TACCAGTAAGTAGCCGGTATCAGCAAAAATTCAGCAGCTTGCAATACCCTTAAACGACCGAAGAGACC
 ACCATTACGGGAATCTTTGTTGATGACTTTGAGGAATTGTTAGAAGTTCAACAACCAGATCCAAACCA
 CCAAAGCCAGAGGGCGCCAGATGCTGGCCACAAGAGGGGAGCAGTTGGGAGTCGTACAAACTGGCCAC
 CCTTTTAGAAGCTGCACTACAACGATGGGGACCATCTCTCGAAGGCTCCCTGCCTGACTACCATGGA
 CACAAATGGCAAACCCCTGTACATCCTCACTTACGGCAAATATGGACAAGAAGTATGAAGTTGCTTAC
 AACATTACATAAATTAGGTACAAAGCAAGAACCTATGGTACGGCCTGGAGACAGGGTGGCGCTAGTGT
 TCCCAAACAATGACCCTGCTGCTTTCATGGTGGCCTTCTATGGTTGCTTGGCTGAAGTTGTTCCCTGT
 CCCATTGAAGTGCCACTCACAAGAAAGGATGCAGGGAGCCAACAGATAGGTTTCTTGTGGAAAGCTGT
 GGAGTAACTGTTGCCTTGACTAGTGATGCTGTCAAAAGGACTGCCAAAAGCCCAACAGGAGAGATCC



[View online >](#)

CACAGTTCAAAGTTGGCCAAAGCTGCTATGGTTTGTCACAGAATCAAAACACCTCTCTAAACCTCCTCG
GGATTGGTTTCCACACATCAAAGATGCTAATAACGACACAGCTTATATTGAGTATAAGACGTGTAAGAC
GGAAGTGTCTTGGTGTGACAGTGACGAGGATAGCGCTGCTGACACACTGCCAGGCACCTACACAGGCCT
GCGGCTATACAGAAGCTGAAACCATTGTGAATGTTCTAGACTTCAAGAAGGATGTGGGACTCTGGCATGG
CATACTGACAAGTGTATGAACATGATGCACGTCATCAGCATCCCATACGCGCTGATGAAGGTAACCC
CTCTCCTGGATCCAGAAGTCTGCCAGTATAAAGCAAAAGTGGCTGTGTGAAATCAAGAGACATGCCT
GGGCATTTGTAGCACACAGAGATCAGAGAGATGTCAACCTGCTCCTCCCTGCCCATGTTAATAGTGCCGA
TGGAGCAAATCCCTGGTCTATTTCTTCTGTGATGCGTTTCTCAATGTCTTCCAGAGTAAAGGCCTTCGA
CAGGAGGTCATCTGTCCCTGTGCCAGCTCACCAGAGGCCCTCACTGTGGCAATCCGGAGGCCTACAGATG
ACAGCAACCAGCCACCAGGGCGAGGTGTGCTATCCATGCATGGGCTGACCTATGGTGTGATCCGTGTGGA
TCCGAGGAGAAGCTGTCCGTGCTCACCCTGCAGGATGTCGGCCTTGTGATGCCTGGAGCCATCATGTGT
TCAGTGAAGCCGGATGGGGTGCCTCAGCTGTGCAGGACGGATGAAATGGGGAGCTCTGTGTCTGTGCAG
TTGCCACAGGAACGTCAATTATGGTCTCTCGGGCATGACCAAGAACACCTTTGAGGATTTCCCATGAC
AAGCTCTGGGGCTCCAATCAGTGAATACCCATTATAAGGACAGGTTTGTGGGATTTGTTGGTCTCTGGG
GGCCTCGTCTTTGTTGTGGGTAAAGATGGACGGCCTGATGGTAGTGAGTGGACGAAGACACAATGCAGATG
ACATTGTGGCCACAGCCCTAGCTGTAGAGCCCATGAAATTTGTCTACAGAGGAAGGATAGCTGTGTTCTC
AGTGACTGTCTTCATGATGAAAGGATAGTGATTGTGGCTGAGCAGAGGCCGGATTCCACAGAAGAAGAC
AGTTTCCAGTGGATGAGCAGAGTACTCCAGGCAATTGACAGTATACATCAAGTTGGAGTTTATTGCCTGG
CCTTAGTCCCAGCAAATACCCCTCCCAAACCCCACTTGGTGGCATCCATTTGTGAGAAACAAAGCAGCT
TTTCTGGAGGGCTCCCTTACCCTGCATGTCTGTGCCCCACACACTGTGTCAAAATTTACCG
AAACCTCGGCAGAAGCAGCCAGAAATGGCCCTGCCTCAGTGTGGTGGGAAACCTAGTGTCTGGGAAGA
GGATTGCCAGGCTAGTGGCAGAGACCTGGTCAGATAGAAGACAATGACCAGGCCCGGAAGTTCCTATT
CCTCTCAGAGGTTTACAGTGGAGAGCGCAGACCCTCCAGACCCTGCTGTACACTGTCTGCAATTTGT
CGGGGAACAATCGCAAATTCCTTGACGTGTGTTCAACTCCACAAGCGTGCAGAAAAGATAGCAGTGTGC
TGATGGAGAGGGCCACCTGCAGGACGGAGACCAGTGGCATTAGTCTACCCTCCAGGAATAGACCTTAT
TGCTGCATTTTATGGTTGCCTGTATGCGGGCTGTGTGCCAATCACCGTGCACCTCCACATCCACAGAAC
ATTGCAACAACATTGCCTACAGTCAAGATGATCGTAGAGGTGAGTGGTCTGCTTGTCTCATGACAACAC
AATTGATTTGTAAGTCTCGGTCCAGAGAGGCAGCAGCAGCTGTAGATGTCAGGACATGGCCCTCAT
ACTGGACACAGATGATTTGCCAAAGAAGCGCCCTGCCAGATCTACAACTTCCAAACCCAGACACACTG
GCTTACCTTGACTTTAGTGTGCCACAACCTGGGATGCTAGCTGGTGTAAAGATGTCTCATGCAGCCACCA
GTCCCTTTTGCCGTTCTATTAAGCTGCAGTGTGAACCTTACCCTTCTAGAGAAGTGGCCATCTGTCTGGA
CCCTTACTGTGGACTTGGGTTTGTCTCTGGTGTCTGCAAGTATACTCAGGGACCAGTCCATTCTG
ATCCCACCTTCTGAGCTGGAGACCAATCCTGCCTTGTGGCTTCTTGTGTGAGTCAAAAGTCCGGG
ATACCTTCTGTTCTATTAGTGTGGAGCTTTGCACCAAGGGCTGGGCTCACAAACTGAGTCCCTTAA
GGCAGCAGGACTGGACTTGTCCCGAGTAAGAACCTGTGTGGTGTGGCAGAAGAGCGTCCCGAATCGCT
CTTACACAGTCTTCTCAAAGCTCTTAAAGACTTGGGCTCCACCCACGAGCTGTTAGCACTTCAATTTG
GCTGCAGAGTGAACCTGGCAATTTGCTTACAGGGGACATCAGGACCTGACCCACCACTGTCTATGTTGA
CATGAGAGCCCTGAGACATGACAGAGTCCGGTTGGTAGAAAGGGGATCCCTCACAGCTTACCTGTATG
GAGTCTGGAAAAATACTTCTGGAGTCCGGATCATTATTGCCAATCCAGAAACGAAAGGCCCTGGGGG
ACTCCCACCTTGGAGAGATCTGGGTCCACAGCGCCACAATGCCAGTGGCTATTTTACCATTTATGGAGA
TGAATCTCTGCAGTCCGATCATTCAACTCCCGGTTGAGTTTTGGAGACCCAGACCATCTGGGCCGA
ACAGGCTACCTGGGCTTCTGCGGAGAAGTGTGCTCACAGATGCAAAATGGAGAGCGCCATGATGCCCTCT
ATGTGGTAGGAGCACTGGATGAAGCCATGGAGCTGCGGGGATGAGGTACCACCAATAGACATAGAGAC
TTCAGTGCATCAGAGCCCAAAAGTGTACAGAATGTGCTGTCTTACCTGGACAAACCTGCTAGTGGT
GTGGTTGAACTGGATGGGTGAGCAGGAAGCCTTGGACTTGGTCCCTTGGTACCATGTGGTCTCTGG
AAGAGCATTACCTGATTGTAGGCGTAGTAGTGTGGTAGACATCGGTGTCATCCCATCAACTCCGGGG
AGAAAAACAGCGGATGCACCTACGGGACGGTTCTTGGCCGACCAGCTGGATCCCATCTACGTGGCCTAT
AACATG

ACGCGTACGCGGCCGCTCGAGCAGAACTCATCTCAGAAGAGGATCTGGCAGCAAATGATATCCTGGATT
ACAAGGATGACGACGATAAGGTTTAA

Protein Sequence: >RR213575 representing NM_001107360
 Red=Cloning site Green=Tags(s)

MADRSLEGMALPLEVRARLAELELELSEGDITQKGYEKKRSKLI GAYLPQPPTANGAAVVRCLQPGEV
 PRRPFRSAHIGVCDIREAAAERERAASAAGNRPLFYFRFGVDQALPQERRAPVTPSSASRYHRRSSGSRD
 ERYRSDVHTEAVQAALAKHKERKMAVPMPSKRRLVVQTSMDAYTPPDTSSGSEDEGSVQGDSQGTPTSS
 QGSINMEHWISQAIHGSTTSTSSSSTQSGGSGAAHRLADVMAQTHIENHSAPPDVTTYTSEHSIQVERP
 QGSTTSRTAPKYGNAELMETGDGVPVSSRVS AKIQQLVNTLKRPKRPLREFVDDFEELLEVVQQPDPNQ
 PKPEGAQMLATRGEQLGVVTNWPPSLEAALQRWGTISPAPCLTTMDTNGKPLYILTYGKLWTRSMKVAY
 NILHKLGTQEPMVRPGDRVALVFPNNDPAAFMVAFYGCLLAEVVPVPIEVPLTRKDAGSQQIGFLLGSC
 GVTVALTSDACHKGLPKSPTGEIPQFKGWPKLLWFVTESKHLSKPPRDWFPHIKDANNDTAYIEYKCKD
 GSVLGVTVTRIALLTQCQALTQACGYTEAETIVNVLDFKDKVGLWHGILTSVMNMMHVISIPYALMKVNP
 LSWIQKVCQYKAKVACVKSRDMHWALVAHRDQRDVNLSSLRMLIVADGANPWSISSCDAFLNVFQSKGLR
 QEVICPCASSPEALTVAIRRPTDDSNQPPGRGVL SMHGLTYGVIRVDSEEKLSVLTVDVGLVMPGAIMC
 SVKPDGVPQLCRTDEIGELCVCVATGTSY YGLSGMTKNTFEVFPMTSSGAPISEYPIRTGLLGFVGG
 GLVFVVGKMDGLMVVSGRRHNADDIVATALAVEPMKFVYRGRIVF SVTVLHDERIVIVAEQRPDSTEED
 SFQWMSRVLQAIDSIHQGVYCLALVPANTL PKTPLGGIHLSETKQLFLEGLHPCNVLMCPHTCVTNLP
 KPRQKQPEIGPASVMVGNLVS GKRIAQASGRDLGQIEDNDQARKFLFLSEVLQWRAQTTPDHLTYLLNC
 RGTIANSLTCVQLHKRAEKI AVMLMERGHLQDGDHVALVPPGIDLIAAFYGCLYAGCVPITVRPPHPQN
 IATTLPTVKMIVEVSRSACLMTTQLICKLLRSREAAAADVVRTWPLILD TDDLPKRPAQIYKPSNPDTL
 AYLDFSVSTTGMLAGVKMSHAATS AFCSRSLKQCELYPSREVAICLDPYCGLGFVLWCLCSVYSGHQ SIL
 IPPSELETNPALWLLAVSQYKVRDTFC SYVMELCTKGLGSQTESLKARGLDL SRVRTCVVVAEERPRIA
 LTQFSKLFKDLGLHPRAVSTSF GCRVNLAI CLQGTSGDPDTTVYVDMRALRHDRVRLVERGSPHSLPLM
 ESGKILPGVRIIIANPETKGPLGDSHLGEI WVSAHNASGYFTIYGDESLQSDHFNRLSFGDTQT IWAR
 TGYLGFLRRELT DANGERHDALYVVGALDEAMELRGMYHPIDIETSVIRAHKSVTECAVFTWTNLLV V
 VVELDGEQEALDLVPLVTNVVLEEHLIVGVVVVDIGVIPINSRGEKQRMHLRDGFLADQLDPIYVAY
 NM

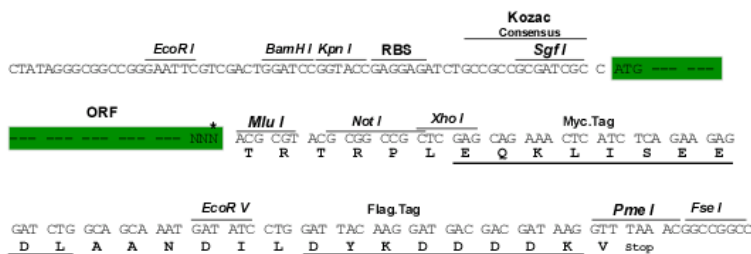
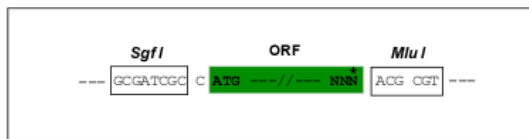
TRTRPLEQKLISEEDLAANDILDYKDDDDKV

Restriction Sites:

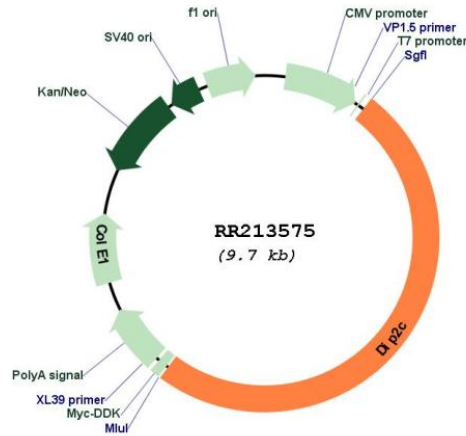
SgfI-MluI

Cloning Scheme:

Cloning sites used for ORF Shutting:



* The last codon before the Stop codon of the ORF

Plasmid Map:


ACCN: NM_001107360

ORF Size: 4836 bp

OTI Disclaimer: The molecular sequence of this clone aligns with the gene accession number as a point of reference only. However, individual transcript sequences of the same gene can differ through naturally occurring variations (e.g. polymorphisms), each with its own valid existence. This clone is substantially in agreement with the reference, but a complete review of all prevailing variants is recommended prior to use. [More info](#)

OTI Annotation: This clone was engineered to express the complete ORF with an expression tag. Expression varies depending on the nature of the gene.

Components: The ORF clone is ion-exchange column purified and shipped in a 2D barcoded Matrix tube containing 10ug of transfection-ready, dried plasmid DNA (reconstitute with 100 ul of water).

Reconstitution Method:

1. Centrifuge at 5,000xg for 5min.
2. Carefully open the tube and add 100ul of sterile water to dissolve the DNA.
3. Close the tube and incubate for 10 minutes at room temperature.
4. Briefly vortex the tube and then do a quick spin (less than 5000xg) to concentrate the liquid at the bottom.
5. Store the suspended plasmid at -20°C. The DNA is stable for at least one year from date of shipping when stored at -20°C.

RefSeq: [NM_001107360.1](#), [NP_001100830.1](#)

RefSeq Size: 6107 bp

RefSeq ORF: 4839 bp

Locus ID: 307067
Cytogenetics: 17q12.1
MW: 176.9 kDa