

## Product datasheet for **RR213544**

### Hpse2 (NM\_001135762) Rat Tagged ORF Clone

#### Product data:

Product Type:	Expression Plasmids
Product Name:	Hpse2 (NM_001135762) Rat Tagged ORF Clone
Tag:	Myc-DDK
Symbol:	Hpse2
Vector:	pCMV6-Entry (PS100001)
E. coli Selection:	Kanamycin (25 ug/mL)
Cell Selection:	Neomycin



[View online »](#)

**ORF Nucleotide Sequence:**

>RR213544 representing NM\_001135762  
 Red=Cloning site Blue=ORF Green=Tags(s)

TTTTGTAATACGACTCACTATAGGGCGGCCGGGAATTCGTCGACTGGATCCGGTACCGAGGAGATCTGCC  
 GCC**CGGATCGCC**

ATGAGGGTCTGTGCTTTCCCTGAAGCCATGTCTCCAGCAGCTCCCGCCCCCTCGTGCCTAGCCC  
 TGGTGGCTCTCTTGGCTCTGCTTCCCTCTCCCTTCCCTTCCACGCTGGAAACAGGAGACCTTT  
 GCCTGTAGACAGAGCTACAGGGTTGAAGGAAAAGACCCTGATTCTACTTGATGTGAGCACCAAGAACCCA  
 GTCAGGACAGTCAGTGAGAACTTCTCTCTGTCATCTGGATCCGTCATCATTGATGATGGCTGGCTCG  
 ATTTCTTAAGCTCCAAGCGTCTGGTGACCTGGCCGGGGACTCTCGCCCGCTTTCTGCGCTTCGGGGG  
 CAAAAGGACGGATTTCTGCAGTCCAGAACCTGAGAAATCCGGCGAAAAGCCGCGGGGGCCCGGGCCCG  
 GATTACTATCTCAAAAATATGAGGATGATATTATTAAGTCTGACATCTGCCTACATCTTTCTTTGCCTT  
 GTCTCTTCTCAAGCACCTGACATTTATCTGGACCTAAAAAGAAAAAGAAAAAATACCATCTTTT  
 ACTACTTGCTGAAGAATATTGTAAGACACAATCTTACCGCATACTTTCTGCCAGGTCTCTAGACAACTT  
 TATAACTTTGCTGATTGCTCTGGACTCCACCTGATATTTGCTCTAAATGCACTGCGTCTGATCCCAATA  
 ACTCCTGGAACAGTTCTAGTGCCCTGAGCCTGTTGAAGTACAGTGCCAGCAAAAAGTACAACATTTCTTG  
 GAACTGGGTAATGAACCAATAACTATCGGAGCATCCACGGCCGGGAGTAAATGGCAGTCAGTTGGGA  
 AAGGATTACATCCAGCTGAGGAGCCTGTGCAACCCATCCGGATTTACTCCAGAGCCGGCTGTACGGCC  
 CCAGTATTGGACGGCCAGGAAGAAGCTCATTGCCCTCTGGATGGATTCCTGAAGGTGGCAGGAAGCAC  
 AGTAGATGCGGTTACCTGGCAACATTGCTACATTGATGGCCGGTGGTCAAGGTGATGGACTTCTGAAA  
 ACTCGCTGTAGATACTCTGACCAAGATTAGGAAAATTGAGAAAGTGGTCAACACATACACTCCAG  
 GAAAGAAGATTTGGCTGGAAGGCATAGTACCACCTCAGCTGGAGGCACAAAACATCTGTCAGATTCCTA  
 CGCTGCAGGATCTTATGGCTAAACACTTAGGAATGCTGGCCAATCAGGGCATTGATGTCGTGATACGA  
 CATTCAATTTTTCGACCACGGATACAACCATCTGGTGGACCAGAATTTAACCCATTACCAGACTATTGGC  
 TTTCTCTCTTTACAAGCGTCTGATTGGCCCAAAGTCTGCGAGTGCATGTAGCTGGGCTCCAGCGGAA  
 GCCTCGGCCAGGAAGAGTCATCCGAGACAACTAAGGATCTATGCTCACTGTACAAACCACCACAACCAC  
 AACTATGTCGGTGGCTCTATCACACTTTTCATCATCAACCTACATCGATCAAGAAAGAAAATCAAAGTGG  
 CTGGGACTCTCAGGGACAAGCTCGTGCACCAGTATCTGCTGCAGCCCTATGGGCAGGAAGGCTAAAGTC  
 CAAGTCAGTGCAGCTCAATGGCCAGCCCTTAGTGATGGTGGACGACGGGACCCCTCCAGAAGTGAAGCCC  
 CGCCCCCTGCGGGCCGGCCGGACATTGGTCATCCCTCCGGTCACCATGGGCTTTTATGTGGTCAAGAAATG  
 CAATGCTTTGGCTTGCCGTTATCGA

**ACGCGT**ACGCGGCCGCTCGAGCAGAACTCATCTCAGAAGAGGATCTGGCAGCAAATGATATCCTGGATT  
 ACAAGGATGACGACGATAAGGTTTAA

**Protein Sequence:**

>RR213544 representing NM\_001135762  
 Red=Cloning site Green=Tags(s)

MRVLCAPPEAMSSSSSRPPSCLALVALFLALLLPLSLSFHAGNRRPLPVDRATGLKEKTLILLDVSTKPN  
 VRTVSENFSLHLDPSTIHDGWLDFLSSKRLVTLARGLSPAFLRFGGKRTDFLQFQNLNRPKSRGGPGP  
 DYLLKNYEDDIKSDICLHLPLFLKHPDIYLDLKKKKKKYHLLLLAEYCKTQSYRILSARSLDKL  
 YNFADCSGLHLIFALNALRRNPNNSSWSSALSLLKYSASKKYNISWELGNEPNYRSIHGRAVNGSQLG  
 KDYIQLRSLQLPIRISYRAGLYGPSIGRPRKNVIALLDGFLKVAGSTVDAVWQHCYIDGRVYKVMDFLK  
 TRLLDTLSDQIRKIQKVNTYTPGKKIWLLEGIVTTSAGGTNNLSDSYAAGFLWNLGMLANQGIDVVIR  
 HSFFDHGYNHLVDQNFNPLPDYWL SLLYKRLIGPKVLAVHVAGLQRKPRPGRVIRDKLR IYAHCTNHHNH  
 NYVRGSI TLF IINLHRSRKKIKLAGTLRDKLVHQYLLQPYGQEG LKSKSVQLNGQPLVMVDDGTLPELKP  
 RPLRAGR TLVIPPVTMGFYVVKVNVNALACRYR

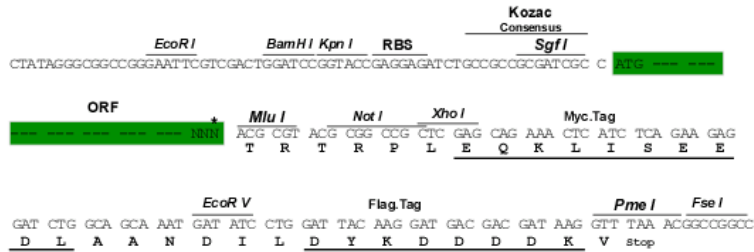
**TRTRPLEQKLI**SEEDLAANDILDYKDDDDKV

**Restriction Sites:**

Sgfl-MluI

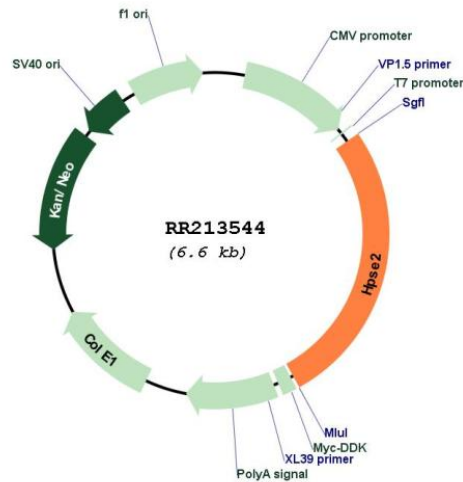
## Cloning Scheme:

Cloning sites used for ORF Shuttling:



\* The last codon before the Stop codon of the ORF

## Plasmid Map:



ACCN:

NM\_001135762

<b>ORF Size:</b>	1776 bp
<b>OTI Disclaimer:</b>	The molecular sequence of this clone aligns with the gene accession number as a point of reference only. However, individual transcript sequences of the same gene can differ through naturally occurring variations (e.g. polymorphisms), each with its own valid existence. This clone is substantially in agreement with the reference, but a complete review of all prevailing variants is recommended prior to use. <a href="#">More info</a>
<b>OTI Annotation:</b>	This clone was engineered to express the complete ORF with an expression tag. Expression varies depending on the nature of the gene.
<b>Components:</b>	The ORF clone is ion-exchange column purified and shipped in a 2D barcoded Matrix tube containing 10ug of transfection-ready, dried plasmid DNA (reconstitute with 100 ul of water).
<b>Reconstitution Method:</b>	<ol style="list-style-type: none"><li>1. Centrifuge at 5,000xg for 5min.</li><li>2. Carefully open the tube and add 100ul of sterile water to dissolve the DNA.</li><li>3. Close the tube and incubate for 10 minutes at room temperature.</li><li>4. Briefly vortex the tube and then do a quick spin (less than 5000xg) to concentrate the liquid at the bottom.</li><li>5. Store the suspended plasmid at -20°C. The DNA is stable for at least one year from date of shipping when stored at -20°C.</li></ol>
<b>RefSeq:</b>	<a href="#">NM_001135762.1</a> , <a href="#">NP_001129234.1</a>
<b>RefSeq Size:</b>	1779 bp
<b>RefSeq ORF:</b>	1779 bp
<b>Locus ID:</b>	368128
<b>Cytogenetics:</b>	1q54
<b>MW:</b>	66.9 kDa