

Product datasheet for **RR213494**

Ncoa1 (NM_001108012) Rat Tagged ORF Clone

Product data:

Product Type: Expression Plasmids
Product Name: Ncoa1 (NM_001108012) Rat Tagged ORF Clone
Tag: Myc-DDK
Symbol: Ncoa1
Synonyms: SRC-1
Vector: pCMV6-Entry (PS100001)
E. coli Selection: Kanamycin (25 ug/mL)
Cell Selection: Neomycin
ORF Nucleotide Sequence: >RR213494 representing NM_001108012
Red=Cloning site Blue=ORF Green=Tags(s)

TTTTGTAATACGACTCACTATAGGGCGGCCGGAATTCGTCGACTGGATCCGGTACCGAGGAGATCTGCC
GCCGGATCGCC

ATGAGTGGCCTTGGGGACAGTTCATCCGACCCTGCGAACCAGACTCACATAAGAGAAAAGGATCGCCAT
 GTGACACACTGGCATCAAGTACTGAGAAGAGGCGCAGGGAGCAAGAAAATAGTATTTAGAAGAACTAGC
 TGAATTACTGTCTGCCAACATCAGTGACATTGACAGCTTGAGTGTAAAACCAGATAAATGCAAGATCTTG
 AAGAAGACAGTAGATCAGATACAGCTAATGAAGAGAATGGAGCAAGAGAAATCCACAACATGATGATGACG
 TGCAAGTCCGACATCTCATCGAGCAGTCAAGGAGTGATAGAGAAGGAGTCGCTGGGCCCTTCTTCT
 GGAGGCTTTGGATGGATTTTCTTTGTTGTAAGTGTGAAGGAAGAATTGATTTGTGTCAGAAAATGTG
 ACCAGCTACCTGGGTTACAATCAGGAAGAAATTAATGAATACCAGCGTCTACAGCATACTGCATGTGGGAG
 ATCATGCAGAATTTGTCAAGAATCTACTACAAAATCACTAGGCACTGAGAACCAAGAAGCTTGCCAGCG
 CTATGAAGTAATGCAGTGTTCACGGTGTACAGCCAAAATCAATCCAAGAAGATGGCGAAGGCAAAATC
 ATCTCTATTGACACTAGCTCCCTGAGAGCTGCTGGCAGGACTGGCTGGGAAGATTTAGTAAGGAAATGTA
 TCTATGCTTTTTTCCAACCTCAGGGCAGAGAGCCATCTTATGCCGACAGCTGTTTCAAGAAGTGATGAC
 TGGTGGCACTGCCAGCCATCCTATAGATTCATATTGAATGATGGGACAATGCTTAGCGCCACACC
 AAGTGTAACCTTTGCTACCCCTCAAAGTCTGACATGCAGCCTTTCATCATGGGAATTCATATCATCGACA
 GGGAGCACAGTGGGCTTCTCCTCAAGATGACACTAATTCTGGAATGTCAATCCCCGAATAAACCCCTC
 AGTCAATCCTGGTATCTCTCCAGCCATGGTGTGACCCGTTTATCCACGTTGCCACCATCCAACAACAAC
 ATGGTCTCTGCCAGAGCAAACCGCCAGCAGAGCACAGACCTTAACAGCGGCAGCAGTACAGTAACCTTA
 GCAGCAGCAAGGGAGCTTTGGATGCTCACCTGGAAATCAGATTGTAGCCAGCGTTGCCTTAAGCCAGGG
 ACAGGCAGGTTCCAGAGCAGTAATCCGCTTTAAACCTCAATAATTCTCCTATGGAAGGTACAGGAATT
 TCCCTCGCACAGTTCATGTCTCCGAGGAGACAAGCTAATTCTGGCTTGGCAACAAGGGCCAGGATGTCAA
 ACAATTCATTTCCCAATATTCCAACATTAAGCTCCCCGTTGGCATCACTAGCGGTGCTGTAGTAA
 TAATAACCGATCCTATTCCAATATCCAGTAACATCTTTACAAGGTATGAATGAAGGACCAATAATTCT
 GTTGGCTTCTCTGCCGGCTCTCCAGTCTTCGGCAGATGAGCTCACAGAATTCACCTAGCAGATTAAGTA



[View online »](#)

TGCAACCAGCAAAAGCCGAGTCCAAGACAACAAAGAGATTGCATCCATTTAAATGAAATGATTGAGTC
AGACAACAGTGCTAACGAAGGCAAGCCTCTGGACTCAGGACTTCTGCATAACAATGACAGACTCTCAGAT
GGAGACAGTAAGTACTCTCAAAC TAGTACAAAAC TAGTACAGCTATTGACGACTACCGCAGAGCAGCAGT
TACGGCATGCTGACATAGACACGAGCTGCAAAAGACGTCTGTCTGCACTGGCACTTCCAGCTCCGCCTC
CTCTAACCCCTCAGGAGGTA CTGTCCCTCTCCACAGCTCTGACTGAGCGGCATAAAATCTGCAT
CGGCTTTTACAGGAGGGCAGCCCTCAGACATCACCACCTGTCTGTGGAACCCGAAAAGAAGGACAGTG
GTCAGCTTCTACTGCTATGTCAGTGTCTGGACAAGCCAGGGAGTGCCAGCATAAAATAGAATTGGA
TGCTTCAAAGAAAAAGAGTCAAAGACCATCAGCTCCTACGCTACCTTTTAGACAAAGATGAGAAAGAT
TTAAGATCAACTCAAACCTGAGCCTGGATGACGTAAAGGTCAAAGTGGAGAAGAAAGAGCAGATGGATC
CTTGTAACACAAAACCCAGCCCCAGTGACCAAACCTGCTCCCGAGGAGGTTAAACTCGAGTCCCAGAGCCA
GTTTTAGCTGACCTTGACCAGTTTGATCAGTTATTGCCACACTGGAGAAGGCAGCGCAGTTGCCGGGC
TTGTGTGAGACAGACAGAATGGATGGTGCGGTCCCGGTGTGAACATCAAGTCGGAGATCCTGCCCGCT
CACTTCAGCCACCCCTGCCAGATCTGCTCCAGGCTGAACAGATTGCCTGAACTAGAATTAGAAGCAAT
CGATAACCAGTTTGGACAACCAGGAGCAGGGGATCAGATTCATGGGCAAATAACTGTGACGGCGATA
AATCAGAGTAAACCAGAAGACCAATGTATTAGCTCACAGTTGGATGAGCTCCTCTGTCCACCAACAACAG
TAGAAGGAAGAAATGATGAGAAGGCCCTTCTGGAACAACCTGGTGTCTTCTCAGTGGAAGATGAGAC
GGAGCTGGCCGAGCTAGACAGAGCGCTGGGGATTGACAAACTTGTACAGGGAGGTGGATTAGATGTATTA
TCTGAGAGATTTCCACCACAGCAAGCAACACCCTTTGATGATGGAAGACAGGCCACCCTCTATCCCC
AGCCATACTCGTCTCTTCTCCACCGCCGGTCTCTCTGGCCCTTCCAAGGCATGGTCCGACAGAAGCC
TTCCTGGGTA CTATGCCGGTTCAAGTAACACCTCCTCGAGGAACCTTTTCAACCAACATGGGCATGCAA
CCCCGGCAGACTCTAAATAGACCTCCAGCTGCACCAACCAGCTTCGGCTGCAGCTGCAGCAGCGGCTAC
AGGGGCAGCAGCAGTTGATGCACAAAACCGGCAAGCTATCTTGAACAGTTTGCAGCAATGCTCCTGT
TGGCATGAACATGAGGTCAGGCATGCAGCAGCAGATAACACCTCAGCCACCCTGAATGCTCAGATGTTG
GCACAGCGCCAACGGGAGCTGTACAGTCAGCAGCATCGACAGAGGCAAATTTATCCAGCAGCAAAGAGCCA
TGCTCATGAGGCACAAAAGCTTTGGGAACAACATCCCTCCTTCATCCGGACTCCCAGTTCAAATGGGGAA
CCCCCGTCTTCTCAGGGTGCTCCACAGCAGTTCCTACCCACCAAACTATGGTACAAATCCAGGAACC
CCACCTGCTTCTACCAGCCCTTCTCTCAACTGGCAGCAAACCCTGAGGCATCCTTGGCCACCCGACGCA
GCATGGTGAACAGAGGCATGGCAGGGAACATGGGAGGACAGTTTGGTACTGGCATCAGTCCGCAGATGCA
GCAGAATGTCTTCCAGTACCCAGGGT CAGGACTGGTCCCAAGCTGAGGCCAATTTGCCCATCTCTA
AGCCCTGGGAGCTCCATGGTGCCGATGCCAATCCCTCCTCAAAGCTCTCTGCTCCAACAAACTCCACCCA
CTTCTGGGTACCAGTACCAGGACATGAAGGCCTGGCAGCAAGGAACAATGGGAAACAACAATGTGTTTCAG
TCAAGCCGTCCAGAGCCAGCCTGCCCTGCACAGCCAGGAGTGTACAACAACATGAGCATACCCGTGTC
ATGGCAGGTGAAACGCAACGTTT CAGAACATGAATCCAATGATGGGCCAGATGCAAATGAGCTCTCTGC
AGATGCCAGGGATGAACACTGTGTGCTCTGAGCAGATGAATGATCCAGCACTGAGACACACAGGCCTCTA
CTGCAACCAGCTCTATCCACTGACCTTCTCAAACCGAAGCAGATGGAACCCAGGACAAGAAGACAGAA
GAGTTCTTCTCTGTGAGGTGCAGCAGCTT CAGGTGTTTGTGCTGACGTCCAGTGTACAGTGAACCTGAAAG
GAGCCAGCAAACCGACTTAGTGCTAGCAGTCTGCTACAAGAAAAGGCCATAAGAACCAATGCAGATGA
GGAGCATGGACTCAAGACTTCAAGGAAGAAGCCATTTCCCAAGTCTTCTTCTGATCTCACCGCCCC
TGGTACAAACAACCTCCATAAGAACAGCATCTACTCAGAAACTACAGGACTT

ACGCGTACGCGGCCGCTCGAGCAGAAACTCATCTCAGAAGAGGATCTGGCAGCAATGATATCCTGGATT
ACAAGGATGACGACGATAAGGTTTAA

Protein Sequence: >RR213494 representing NM_001108012
 Red=Cloning site Green=Tags(s)

```

MSGLGDSSSDPANPDSHKRKGSPCDTLASSTEKRRREQENKYLEELAELLSANISDIDSLSVKPKCKIL
KKTVDQIQLMKRMEQEKSTDDDDVQKSDISSSSQGVIEKESLGPLLLEALDGGFFVFNCEGRIVFVSENV
TSYLGYNQEELMNTSVYSILHVGDDHAEFVKNLLPKSLGTENQEACQRYEVMQCFVTSQPKSIQEDGEGKI
ISIDTSSLRAAGRTGWEDLVRKCIYAFFQPQGREPSYARQLFQEVMTGTASSPSYRFLINDGTMLS AHT
KCKLCYPQSPDMQPFIMGIHIIDREHSGLSQDDTNSGMSIPRINPSVNPGISPAHGVTRSTLPPSNNN
MVSARANRQOSTDLNSGSSHSNSSSSQGSFGCSPGNQIVASVALSQGQAGSQSSNP SLN LNNSPMEGTGI
SLAQFMSPRRQANSGLATR ARMSNNSFPPIPTLSSPVGITSGACSNNNRSYSNIPVTSLQGMNEGPNS
VGF SAGSPVLRQMSSQNSPRLSMQPAKAE SKDNKEIASILNEMI QSDNSANEGKPLD SGLLHNDRLSD
GDSKYSQTS HKLVQLLTTAEQQLRHADIDT SCKDVLCTGTSSSASSNPSGGT CPSSHSSLTERHKILH
RLLQEGSPSDITL SVEPEKKDSASASTAMSVSGQAQGSASIKLELDASKKKE SKDHQLLR YLLDKDEK
LRSTPNLSLDDVKVKVEKKEQMDPCNTNPAPVTKPAPEEVKLESQSQFSADLDQFDQLLPTLEKAAQLPG
LCETDRMDGAVPGVNIKSEILPASLQPTPARSAPRLNRLPELELEAIDNQFGQPGAGDQIPWANNTVTAI
NQSKPEDQCISSQLDELLCPPTTVEGRNDEKALLEQLVSFLSGKDETELAELDRALGIDKLVQGGGLDVL
SERFPPQATPPLMMEDRPTLYPQYSSPSPTAGLSGPFQGMVRQKPSLGTMPVQVTPPRGTFSPNMGMQ
PRQTLNRPAAPNQLRLQLQQRLLQGQQQLMHQNRQA ILNQFAANAPVGMNMRSGMQQITPQPPLNAQML
AQRQRELYSQQHRQRQIIQQQRAMLMRHQSF GNNIPPSSGLPVQMGPNRPLPQGAPQQFPYPPNYGTNPGT
PPASTSPFSQLAANPEASLATRSMVNRMAGNMGGQFGTGISPQMQQNVFYQPGSGLVPQAEANFAPSL
SPGSSMVPMPIPPQSSLLQQTPTPSGYQSPDMKAWQQGTMGNNNVFSQAVQSQPAPAQPQGVYNNMSITVS
MAGGNANVQNMNPMQMSSQLQMPGMNTVCSEQMNDPALRHTGLYCNQLSSTDLLKTEADGNQDKKTE
EFFSVQVQQLQVFADVQCTVNLKGASKPTLV L AVL LQEKAIRTNAD EEHGLKTSRKKPFQVLP SASHRP
WYKQLHKNSIYSETTGL
    
```

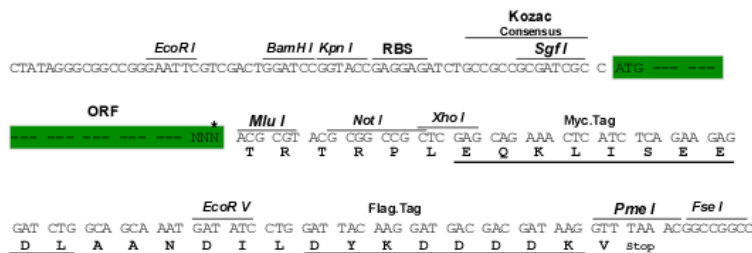
TRTRPLEQKLISEEDLAANDILDYKDDDDKV

Restriction Sites:

Sgfi-MluI

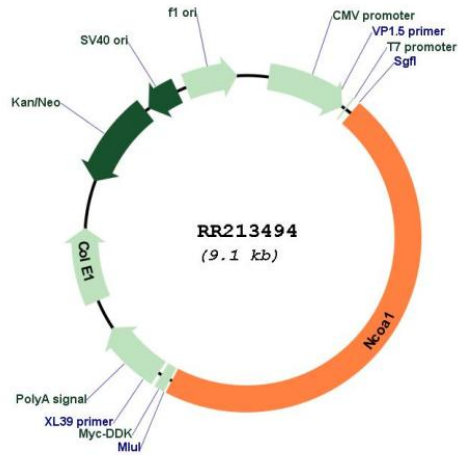
Cloning Scheme:

Cloning sites used for ORF Shutting:



* The last codon before the Stop codon of the ORF

Plasmid Map:



ACCN: NM_001108012

ORF Size: 4251 bp

OTI Disclaimer: The molecular sequence of this clone aligns with the gene accession number as a point of reference only. However, individual transcript sequences of the same gene can differ through naturally occurring variations (e.g. polymorphisms), each with its own valid existence. This clone is substantially in agreement with the reference, but a complete review of all prevailing variants is recommended prior to use. [More info](#)

OTI Annotation: This clone was engineered to express the complete ORF with an expression tag. Expression varies depending on the nature of the gene.

Components: The ORF clone is ion-exchange column purified and shipped in a 2D barcoded Matrix tube containing 10ug of transfection-ready, dried plasmid DNA (reconstitute with 100 ul of water).

Reconstitution Method:

1. Centrifuge at 5,000xg for 5min.
2. Carefully open the tube and add 100ul of sterile water to dissolve the DNA.
3. Close the tube and incubate for 10 minutes at room temperature.
4. Briefly vortex the tube and then do a quick spin (less than 5000xg) to concentrate the liquid at the bottom.
5. Store the suspended plasmid at -20°C. The DNA is stable for at least one year from date of shipping when stored at -20°C.

RefSeq: [NM_001108012.1](#), [NP_001101482.1](#)

RefSeq Size: 5290 bp

RefSeq ORF: 4254 bp

Locus ID: 313929

Cytogenetics: 6q14

MW: 153.8 kDa