

## Product datasheet for RR213472

### Pdxp (NM\_001135819) Rat Tagged ORF Clone

#### Product data:

Product Type: Expression Plasmids  
 Product Name: Pdxp (NM\_001135819) Rat Tagged ORF Clone  
 Tag: Myc-DDK  
 Symbol: Pdxp  
 Synonyms: Rbp1  
 Mammalian Cell Selection: Neomycin  
 Vector: pCMV6-Entry (PS100001)  
 E. coli Selection: Kanamycin (25 ug/mL)  
 ORF Nucleotide Sequence: >RR213472 representing NM\_001135819  
 Red=Cloning site Blue=ORF Green=Tags(s)

TTTTGTAATACGACTCACTATAGGGCGGCCGGGAATTCGTCGACTGGATCCGGTACCGAGGAGATCTGCC  
 GCC**CGATCGCC**

ATGGCGCGCTGCGAGCGGCTGCGCGGCCGGCCCTGCGCGACGTGCTGGGCCAGGCGCAGGGCGTCTTGT  
 TCGACTGCGACGGGGTGTGTGGAACGGCGAGCGCATCGTTCGGGTGCCCTGAGCTGCTGCAGCGGT  
 GGCGCAGGCGGGCAAGGCCACGCTGTTCTGTGAGCAACAACAGCCGGCGCGCGGCCCGAGCTGGCGTG  
 CGCTTCGCCCGCCTGGGTTTCACGGGGTGCAGCGCGAGGAGCTTTCAGCTCCGCGGTGTGTGCCGCC  
 GCCTCCTGCGCCAGCGCCTGCCCGGCCCTCCCGACGCACCGGGCGCCGTGTTCTGTGCTGGGTGGCGAGGG  
 GCTGCGCGCCGAGCTGCGTGCCCGGGGCTGCGCCTGGCGGGAGACCCCGCGCAGACCCCGCGCTGCGC  
 GCTGTGCTCGTAGGCTACGACGAGCATTTCCTTCGCCAAGTTGACCGAGGCGTGCGCGCACCTGCGCG  
 ACCCCGACTGCCTGCTAGTGGCCACAGATCGCGACCCCTTGGCACCCTCACCAGCGGAAGCCGGACCCC  
 CGGTACCGGAAGCCTGGCTGCTGAGTGGAGACAGCCTCAGGACGCCAGGCCCTGGTGGTAGGCAAGCCC  
 AGCCCTTACATGTTCCAGTGCATCACAGAAGACTTCAGTGTGGACCCTGCCCGCATGCTGATGGTGGGAG  
 ACCGCCTGGAGACCGACATACTTTGGCCACCCTGCGGCATGACCACCGTGTCTACGCTCACGGGTGT  
 CTAAGCCTCGAAGAAGCCAGGCTTACCTGGCGGCTGGCCAGCATGACCTTGTGCCTCACTACTATGTG  
 GAGAGCATTGCAGACTTGATGGAGGGGCTGGAGGAC

**ACGCGT**ACGCGGCCGCTCGAGCAGAAACTCATCTCAGAAGAGGATCTGGCAGCAAATGATATCCTGGATT  
 ACAAGGATGACGACGATAAGGTTTAA



[View online »](#)

**Protein Sequence:** >RR213472 representing NM\_001135819  
Red=Cloning site Green=Tags(s)

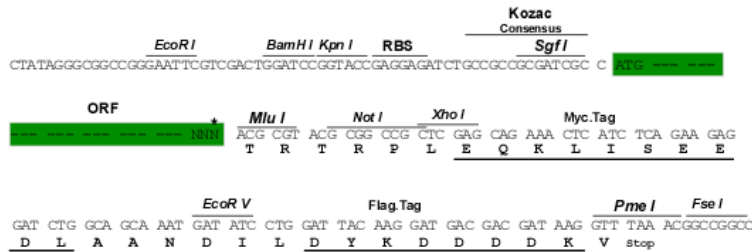
MARCERLRGAALRDVLGQAQGVLFDCDGVLWNGERIVPGAPPELLQRLAQAGKATLFVSNNSRRARPELAL  
 RFARLGF TGLRAEELFSSAVCAARLLRQRLPGPPDAPGAVFVLGGEGRLAELRAAGLRLAGDPGDDPRVR  
 AVLVG YDEHFSFAKLTEACAHLRDPDCLLVATDRDPWHPLTDGSRTPGTGSLAAAVETASGRQALVVGKP  
 SPYMFQCITEDFSVDPARMLMVGDRLETDILFGHRCGMMTVLTL TGVSSLEEAQAYLAAGQHDLVPHYYY  
 ESIADLMEGLE D

TRTRPLEQKLISEEDLAANDILDYKDDDDKV

**Restriction Sites:** SgfI-MluI

**Cloning Scheme:**

Cloning sites used for ORF Shuttling:



\* The last codon before the Stop codon of the ORF

**ACCN:** NM\_001135819

**ORF Size:** 876 bp

**OTI Disclaimer:** The molecular sequence of this clone aligns with the gene accession number as a point of reference only. However, individual transcript sequences of the same gene can differ through naturally occurring variations (e.g. polymorphisms), each with its own valid existence. This clone is substantially in agreement with the reference, but a complete review of all prevailing variants is recommended prior to use. [More info](#)

**OTI Annotation:** This clone was engineered to express the complete ORF with an expression tag. Expression varies depending on the nature of the gene.

**Components:** The ORF clone is ion-exchange column purified and shipped in a 2D barcoded Matrix tube containing 10ug of transfection-ready, dried plasmid DNA (reconstitute with 100 ul of water).

**Reconstitution Method:**

1. Centrifuge at 5,000xg for 5min.
2. Carefully open the tube and add 100ul of sterile water to dissolve the DNA.
3. Close the tube and incubate for 10 minutes at room temperature.
4. Briefly vortex the tube and then do a quick spin (less than 5000xg) to concentrate the liquid at the bottom.
5. Store the suspended plasmid at -20°C. The DNA is stable for at least one year from date of shipping when stored at -20°C.

**RefSeq:** NM\_001135819.1, NP\_001129291.1

**RefSeq Size:** 2015 bp

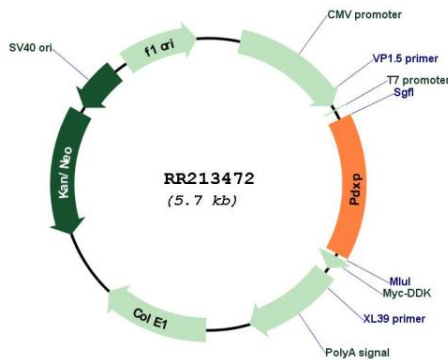
**RefSeq ORF:** 879 bp

**Locus ID:** 727679

**Cytogenetics:** 7q34

**MW:** 31.4 kDa

**Product images:**



Circular map for RR213472