

## Product datasheet for **RR213404**

### Hcn2 (NM\_053684) Rat Tagged ORF Clone

#### Product data:

Product Type:	Expression Plasmids
Product Name:	Hcn2 (NM_053684) Rat Tagged ORF Clone
Tag:	Myc-DDK
Symbol:	Hcn2
Vector:	pCMV6-Entry (PS100001)
E. coli Selection:	Kanamycin (25 ug/mL)
Cell Selection:	Neomycin



[View online »](#)

**ORF Nucleotide Sequence:**

>RR213404 representing NM\_053684  
 Red=Cloning site Blue=ORF Green=Tags(s)

TTTTGTAATACGACTCACTATAGGGCGGCCGGGAATTCGTCGACTGGATCCGGTACCGAGGAGATCTGCC  
 GCC**CGGATCGCC**

ATGGATGCGCGCGGGGGCGGGCGGGCGGCGATAGTCCGGGCGGACCCCTGCGCGGGGCCGCGCC  
 CACCGCCGCGCCGCGCCCGCCCTCAGCCTCAGCCACCACCCGCGCCACCCCGAACCCACGACCCC  
 CTCGACCCGGAGTCGGCGGACGAGCCCGCCCGCTCCCGGCTCTGCAGCCGCGACAGCTCCTGCACT  
 CCTGGCGCGGCCAAGGGCGGCGGAATGGCGAGTGCGGGCGGGGAGCCGAGTGCAGCCCGAGGGCC  
 CCGCGCGCGCCCAAGGTTTCTCATGTGCGGGGCGGCTCGGGGCCGCGGGCGGCGAGGAGGC  
 GGGCAGCGAGGAGGGCCCGGGTGGAGCCGCGGGCAGCCAGGCCAGCTTCTGCAGCGCAATTC  
 GGGGCGCTCCTGCAGCCGGCGTCAACAAGTTCTCCCTGCGGATGTTTGGCAGCCAGAAGCCGTGGAGC  
 GCGAGCAGGAACGCGTGAAGTCGGCGGGGCGCTGGATCATCCACCCTACAGCGACTTCAGTTCTACTG  
 GGACTTACCATGCTGTTGTTTTCATGGTGGAAATCTCATCATCATCCCTGTGGGATCAGTTTCTCAAG  
 GACGAGACCACGGCGCCCTGGATCGTCTTCAACGTGGTCTCGGACACTTCTTCCCTCATGGACTTGGTGC  
 TGAATTTTCGACCCGGCATTGTTATTGAGGACAACACGGAGATCATCCTGGACCCGAAAAGATAAAGAA  
 AAAGTACCTGCGTACGTGGTTCGTGGTAGACTTCGTGTATCCATCCCGGTGGACTACATCTTCCATC  
 GTGGAGAAGGGAATCGACTCCGAGGTCTACAAGACGGCCCGTGCCTACGATCGTGCCTTCCACCAAGA  
 TCCTCAGTCTGCTGCGGTTGCTGCGGCTATCCCGGCTCATCCGATATATCCACCAATGGGAGGAGATTTT  
 CCACATGACCTACGACCTGGCAAGCGGGTGTGCGCATCTGTAACTGATCAGCATGATGCTGCTGCTC  
 TGCCACTGGGACGGCTGCCTGCAGTTCCTGGTCCCATGCTGCAAGACTTCCCAGCGACTGCTGGTGT  
 CCATCAACAACATGGTGAACCACTCGTGGAGCGAACTTATTGTTTCGCGCTCTTCAAGGCCATGAGCCA  
 CATGCTGTATTGGCTACGGGCGGCGAGGCTCCGAGAGCATGACGGACATCTGGCTCACCATGCTCAGC  
 ATGATCGTGGGCGCCACCTGCTACGCTATGTTTATTGGGACGCCACGGCGCTTATCCAGTCCCTGGACT  
 CGTCACGGCGCCAGTACCAGGAGAAGTACAAGCAAGTGGAGCAGTACATGTCTTCCACAAACTGCCGGC  
 TGACTTCCGCCAGAAGATCCACGATTACTATGAACACCGGTACCAGGGGAAGATGTTTACGAGGACAGC  
 ATCCTGGGGAACTCAACGGCCACTGCGTGAGGAGATTGTAACTTCAACTGCCGAAGCTGGTGGCTT  
 CCATGCCGTTGTTTGCACCGCAGACCCCAACTTCGTACCGCCATGCTGACAAAGCTCAAATTTGAGGT  
 CTTCCAGCCTGGAGACTACATCATCCGAGAGGGGACCATCGGGAAGAAGATGTACTTCATCCAGCACGGG  
 GTGGTGAAGCTGCTACCAAGGGCAACAAGGAGATGAAGCTGTGAGTGGCTCCTATTTTGGGAGATCT  
 GCCTGCTCAGGAGGGCCGGCGCACAGCCAGTGTGCGGGCTGACACCTACTGTGCGCTCTACTACTGAG  
 CGTGGACAACCTCAACGAGGTGCTGGAGGAGTACCCCATGATGCGGGCTGCCCTTGGAGACCGTGGCCATT  
 GACCGCCTGGACCGCATAGGCAAGAAGAACTCCATCTTGTACACAAGGTTACAGCATGATCTCAGCTCGG  
 GTGTGTTCAACAACCAGGAGAACGCCATCATCCAGGAGATTGTCAAATATGACCGTGAGATGGTGCAGCA  
 GGCAGAGCTGGGCGAGCGTGTGGGGCTCTTCCACCACCGCCACCACCGCAGGTACGTCGGCCATCGCC  
 AACTGCAGCAGGCGGTGGCCATGAGCTTCTGCCCGCAGGTGGCCCGCCCGCTCGTGGGGCCCTGGCGC  
 TAGGGTCCCACGCTCGTGCGCCGCGCCCGCCAGGGCTCTGCCTCTGCAGCCTCACAGGGCCACC  
 CGCAGCGAGCCCCCGGCTGCACCTCGAGCCCTCGGGCACCGCGGACCTCACCTACGGTGTGCCTGGC  
 TCTCCGGCAACGCGTGTGGGGCCCGATTGCCCGCACCGCCTGAGCCGCGCCTCGCGCCACTGTCCG  
 CCTCGCAGCCCTCGTGCACCACGGCGCCCGCACCCAGCCCGCGGCCTCTGCGCGCCCGGCCAGCAG  
 CTCCACCCCGCTCTGGGACCGCACCCACCACCGGACCGCGCACCCAGTCCGGACCGCAGGGACTCA  
 GCCTCGCCGGGCGCTGCCAGTGGCTCGACCCACTGGACTCTGCGCGCTCGCGCTCTTCCAACCTTG

**ACGGGCGC**TCGAGCAGAACTCATCTCAGAAGAGGATCTGGCAGCAAATGATATCCTGGA  
 TTACAAGGATGACGACGATAAGGTTTAA

Protein Sequence: >RR213404 representing NM\_053684  
Red=Cloning site Green=Tags(s)

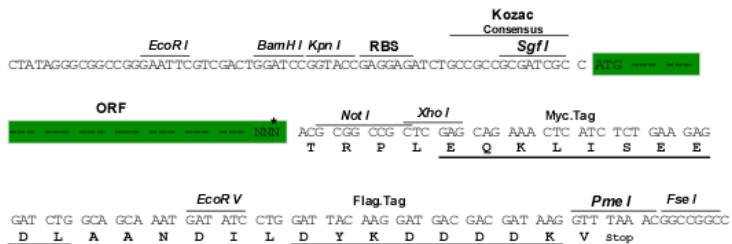
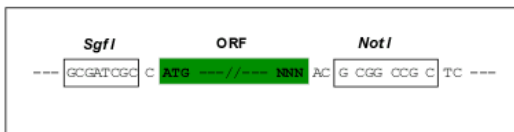
MDARGGGGRPGDSPGATPAGPPPPPPPPAPPQPQPPAPPNPTTPSHPEADEPGPRSRLCSRDSST  
PGAAGGANGECGRGEPQCSPEGPARGPKVSFSCRGAASGPAEEAGSEEAGPAGEPRGSQASFLQRQF  
GALLQPGVNFSLRMFGSQKAVEREQERVKSAGAWIIHPYSDFRFYWDFTMLLFMVGNLIIIPVGITFFK  
DETTAPWIVFNVSDTFFLMDLVNFRGTGIVIEDNTEIILDPEKIKKKYLRTWFVDFVSSIPVDYIFLI  
VEKGIDSEVYKTARALRIVRFTKILSLLRLLRLSRLIRYIHQWEEIFHMTYDLASAVMRICNLISMMLLL  
CHWDGCLQFLVPMLQDFPSCDWVSINNMVNHWSSELYSFALFKAMSHMLCIGYGRQAPESMTDIWLTMLS  
MIVGATCYAMFIGHATALIQSLDSSRRQYQEKYQVEQYMSFHKLPADFRQKIHDYEHRYQGKMFDEDS  
ILGELNGPLREEIVNFCRKLVASMPLFANADPNFVTAMLTKLKFEVFQPGDYIIREGTIGKKMYFIQHG  
VSVLTKGNKEMKLSDGSYFGEICLLTRGRRTASVRADTYCRLYSLVDNFNEVLEEYPMRRRAFETVAI  
DRLDRIGKKNISILLHKVQHDLSSGVFNQENAI IQEIVKYDREMVQQAELGQRVGLFPFFFFFFVTSAIA  
TLQQAVAMSFQVAPRLVGPLALGSPRLVRRAPPGLPPAASGPPAASPPAAPSSPRAPRTSPYGVPG  
SPATRVGPALPARRLSRASRPLSASQPSLPHGAPAPSPAASARPASSSTPRLGPAPTRTAAPSPDRRDS  
ASPGAASGLDPLDSARSRLSSNL

TRPLEQKLI SEEDLAANDILDYKDDDDKV

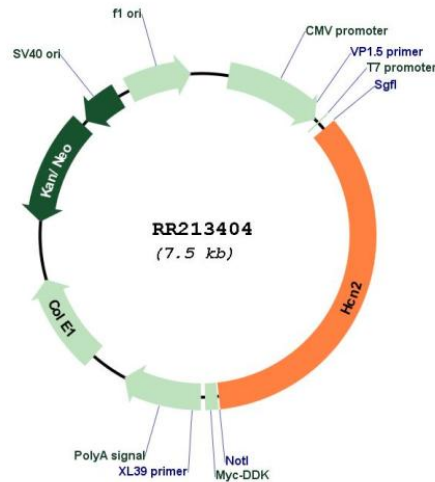
Restriction Sites: Sgfl-NotI

## Cloning Scheme:

Cloning sites used for ORF Shuttling:



\* The last codon before the Stop codon of the ORF

**Plasmid Map:**


**ACCN:** NM\_053684

**ORF Size:** 2589 bp

**OTI Disclaimer:** The molecular sequence of this clone aligns with the gene accession number as a point of reference only. However, individual transcript sequences of the same gene can differ through naturally occurring variations (e.g. polymorphisms), each with its own valid existence. This clone is substantially in agreement with the reference, but a complete review of all prevailing variants is recommended prior to use. [More info](#)

**OTI Annotation:** This clone was engineered to express the complete ORF with an expression tag. Expression varies depending on the nature of the gene.

**Components:** The ORF clone is ion-exchange column purified and shipped in a 2D barcoded Matrix tube containing 10ug of transfection-ready, dried plasmid DNA (reconstitute with 100 ul of water).

**Reconstitution Method:**

1. Centrifuge at 5,000xg for 5min.
2. Carefully open the tube and add 100ul of sterile water to dissolve the DNA.
3. Close the tube and incubate for 10 minutes at room temperature.
4. Briefly vortex the tube and then do a quick spin (less than 5000xg) to concentrate the liquid at the bottom.
5. Store the suspended plasmid at -20°C. The DNA is stable for at least one year from date of shipping when stored at -20°C.

**RefSeq:** [NM\\_053684.1](#), [NP\\_446136.1](#)

**RefSeq Size:** 2633 bp

**RefSeq ORF:** 2592 bp

**Locus ID:** 114244

**UniProt ID:** [Q9JKA9](#)

**Cytogenetics:** 7q11

**MW:** 94.7 kDa

**Gene Summary:** may play a role in generation of neuronal pacemaker activity [RGD, Feb 2006]