

## Product datasheet for **RR213392**

### Mapk14 (NM\_031020) Rat Tagged ORF Clone

#### Product data:

Product Type:	Expression Plasmids
Product Name:	Mapk14 (NM_031020) Rat Tagged ORF Clone
Tag:	Myc-DDK
Symbol:	Mapk14
Synonyms:	CRK1; CSBP; Csbp1; Csbp2; CSPB1; Exip; Hog; Mxi2; p38; p38alpha; p38Hog; Prkm14; Prkm15; RK; Sapk2A
Vector:	pCMV6-Entry (PS100001)
E. coli Selection:	Kanamycin (25 ug/mL)
Cell Selection:	Neomycin
ORF Nucleotide Sequence:	>RR213392 representing NM_031020 Red=Cloning site Blue=ORF Green=Tags(s)

TTTTGTAATACGACTCACTATAGGGCGGCCGGAATTCGTCGACTGGATCCGGTACCGAGGAGATCTGCC  
GCC**CGATCGCC**

ATGTCGCAGGAGAGGCCACGTTCTACCGCAGGAGCTGAACAAGACCGTCTGGGAGGTGCCCGAGCGAT  
ACCAGAACCTGTCCCGGTGGGCTCGGGAGCCTACGGCTCGGTGTGTGCTGCTTTTGATACAAAGACGGG  
ACATCGTGTGGCAGTGAAGAAGCTGTGAGACCGTTTCAGTCCATCATTACGCCAAAAGGACCTACAGG  
GAGCTGCGGCTGTGAAGCACATGAAGCACGAGAATGTGATTGGTCTGTTGGATGTGTTACACCTGCAA  
GGTCCCTGGAGGAATCAACGATGTGTACCTGGTGACCCATCTCATGGGGCAGACCTGAACAACATCGT  
GAAGTGTGAGAAGCTTACCGATGACCACGTTTCAGTTTCTATCTACCAGATCCTGCGAGGGCTGAAGTAT  
ATACACTCGGCTGACATAATCCACAGGGACCTAAAGCCCAGCAACCTCGCTGTGAATGAAGACTGTGAGC  
TGAAGATTCTGGATTTTGGGCTGGCTCGGCACACTGATGACGAAATGACCGGCTACGTGGCTACCCGGTG  
GTACAGAGCCCCGAGATTATGCTGAATTGGATGCACTACAACCAGACAGTGGATATTTGGTCCGTGGGC  
TGCATCATGGCTGAGCTGTTGACCGAAGAAGCTGTTTCTGGTACAGACCATATTAACAGCTTCAGC  
AGATAATGCGTCTGACGGGGACACCCCTGCTTATCTCATTAAACAGGATGCCAAGCCATGAGGCAAGAAA  
CTACATTCAGTCTCTGGCCAGATGCCGAAGATGAACTTCGAAATGATTTATTTGGTGCCAATCCCTTG  
GCTGTGACCTGCTGAAAAGATGCTGGTTTTGGACTCGGATAAGAGGATCACAGCAGCCCAAGCTCTTG  
CGCATGCCTACTTTGCTCAGTACCACGACCTGATGATGAGCCAGTGGCTGACCCCTATGACCAAGTCTT  
TGAAAGCAGGGACCTCCTTATAGACGAATGGAAGAGCCTGACCTACGATGAAGTCATTAGCTTTGTGCCA  
CCGCCCTTGACCAAGAAGAAATGGAGTCC

**ACGCGT**ACGCGGCCGCTCGAGCAGAAACTCATCTCAGAAGAGGATCTGGCAGCAAATGATATCCTGGATT  
ACAAGGATGACGACGATAAGGTTTAA



[View online »](#)

**Protein Sequence:** >RR213392 representing NM\_031020  
 Red=Cloning site Green=Tags(s)

MSQERPTFYRQELNKTVWEVPERYQNLSPVGSAGYGSVCAAFDTKTGHRVAVKKLSRPFQSIHAKRTYR  
 ELRLLKHKHENVIGLLDVFTPARSLEEFNDVYLVTHLMGADLNNIVKQCQLTDDHVQFLIYQILRGLKY  
 IHSADIIHRDLKPSNLAVNEDCEKILDFGLARHTDDEMTGYVATRWYRAPEIMLNWMHYNQTVDIWSVG  
 CIMAELLTGRTLFPGTDHINQLQQIMRLTGTPPAYLINRMP SHEARNYIQSLAQMPKMNFAVFIGANPL  
 AVDLLKMLVLDSDKRITAAQALAHAYFAQYHDPDDEPVADPYDQSFESRDLLIDEWKS LTYDEVISFVP  
 PPLDQEEMES

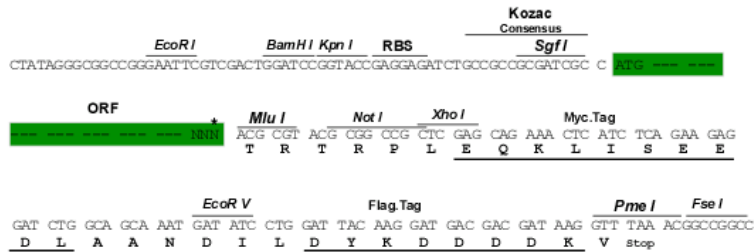
TRTRPLEQKLISEEDLAANDILDYKDDDDKV

**Restriction Sites:**

**Cloning Scheme:**

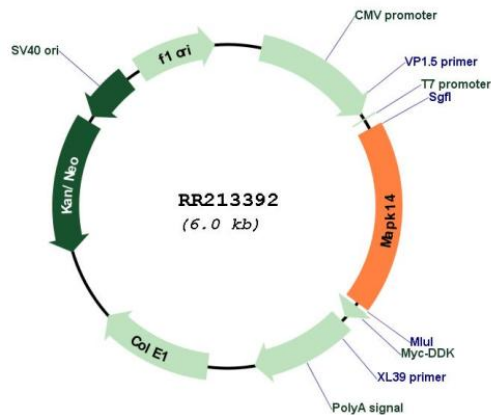
Sgfl-MluI

Cloning sites used for ORF Shuttling:



\* The last codon before the Stop codon of the ORF

**Plasmid Map:**



**ACCN:**

NM\_031020

<b>ORF Size:</b>	1080 bp
<b>OTI Disclaimer:</b>	The molecular sequence of this clone aligns with the gene accession number as a point of reference only. However, individual transcript sequences of the same gene can differ through naturally occurring variations (e.g. polymorphisms), each with its own valid existence. This clone is substantially in agreement with the reference, but a complete review of all prevailing variants is recommended prior to use. <a href="#">More info</a>
<b>OTI Annotation:</b>	This clone was engineered to express the complete ORF with an expression tag. Expression varies depending on the nature of the gene.
<b>Components:</b>	The ORF clone is ion-exchange column purified and shipped in a 2D barcoded Matrix tube containing 10ug of transfection-ready, dried plasmid DNA (reconstitute with 100 ul of water).
<b>Reconstitution Method:</b>	<ol style="list-style-type: none"><li>1. Centrifuge at 5,000xg for 5min.</li><li>2. Carefully open the tube and add 100ul of sterile water to dissolve the DNA.</li><li>3. Close the tube and incubate for 10 minutes at room temperature.</li><li>4. Briefly vortex the tube and then do a quick spin (less than 5000xg) to concentrate the liquid at the bottom.</li><li>5. Store the suspended plasmid at -20°C. The DNA is stable for at least one year from date of shipping when stored at -20°C.</li></ol>
<b>RefSeq:</b>	<a href="#">NM_031020.2</a> , <a href="#">NP_112282.2</a>
<b>RefSeq Size:</b>	3452 bp
<b>RefSeq ORF:</b>	1083 bp
<b>Locus ID:</b>	81649
<b>Cytogenetics:</b>	20p12
<b>MW:</b>	41.5 kDa
<b>Gene Summary:</b>	mitogen-activated protein kinase; involved in intracellular signalling, inhibition of apoptosis and gene activation [RGD, Feb 2006]