

Product datasheet for **RR213318**

Pros1 (NM_031086) Rat Tagged ORF Clone

Product data:

Product Type:	Expression Plasmids
Product Name:	Pros1 (NM_031086) Rat Tagged ORF Clone
Tag:	Myc-DDK
Symbol:	Pros1
Synonyms:	Pros
Vector:	pCMV6-Entry (PS100001)
E. coli Selection:	Kanamycin (25 ug/mL)
Cell Selection:	Neomycin



[View online »](#)

ORF Nucleotide
Sequence:

>RR213318 representing NM_031086
Red=Cloning site Blue=ORF Green=Tags(s)

TTTTGTAATACGACTCACTATAGGGCGGCCGGAATTCGTCGACTGGATCCGGTACCGAGGAGATCTGCC
GCC**CGGATCGCC**

ATGAGGGTCTGAGCGTGCCTTTTCGGGTGCTACTGGCCTGCCTCGCCCTGGTGCTCCCTGTCTCAGAGA
CAAACCTCTTGCAAAAAGAACGAGCTTCACAAGTCCTGGTGAGGAAGCGCCGTGCAAAATACCTTGCTCGA
AGAACTAAAAAGGGCAACCTTGAAAGAGAGTGCATTGAAGAAGCTCTGCAATAAGGAGGAAGCCAGGGAG
GTCTTTGAAAATAATCCCGAAACGGATTATTTTTATCCAAAATATTTAGTTGTCTGGGCGCATTCCGAG
TTGGCGCATTCACTGCTGCGAGGCGAGTCACTAATGCTTACCCTGACCTCAGGAGCTGTGTCAATGCCAT
CCCAGACCAATGTGACCCTATGCCATGCAATGAAGATGGGTATCTGAGCTGCAAAGACGGCCAAGGTGCT
TTTACTTGCATCTGTAACCAGGCTGGCAAGGAGACAAGTGTGAGTTGATATAAATGAATGCAAAGATC
CCTCAAATATCAATGGGGCTGTAGCCAGACTTGTGACAATACTCTGGAAGTTACCACTGCTCCTGTAA
AATTGGCTTTGCTATGCTCACAATAAGAAAGACTGCAAAGATGTGGATGAGTGTCTCTAAAGCCAAGT
GTCTGTGGCACAGCTGTGTGCAAGAACATTCCAGGAGACTTCAATGTGAATGTCCCAATGGCTACAGAT
ATGATCCCTCATCAAATCTTGTAAAGATGTCGATGAATGCTCTGAAAACACCTGTGCCAACTGTGTGT
CAATTACCCCGGAGGCTACTCTTGTACTGTGATGGGAAGAAAGGATTCAAACCTTGCCAAAGATCAGAGG
AGTTGTGAGGGTATTCCAGTGTGCCTTTCTTGGACCTTGACAAAAATTATGAATTATTATTTGGCGG
AACAGTTCGCAGGAGTTGTCTTATCTGAAATTCGATTGCCAGATACACCAGGTTTTAGCTGAATT
TGATTTTCGGACATATGATTAGAGGGCATCACTGTATGCAGAATCTCTCGATCACTCAAATGGCTC
CTGATTGCACTTCGTGAAGGGAAGATTGAAGTTCAAGTTAAGAATGAGTTTTCAACCCAAATCACAAGT
GAGGCAATGTTATTAACAATGGTATATGGAATATGGTGTCTGTGGAAGAATTAGACGACAGTGTAGCAT
TAAAAATAGCTAAGGAGGCGGTGATGAATTAATAAACTTGGGAGTCTTTTTAAACCTACCGATGGATTT
CTGGACACCAAAATATACTTTGCAGGATTACCTCGGAAGGTGGAAAGTGAAGTCACTCATTAAAGCCGATTAATC
CTCGTCTGGATGGATGTATACGAGGCTGGAACCTGATGAAACAAGGAGCTTTGGGTGCAAAGGAAATAGT
TGAAGGAAAAAAAATAAACATTGCTTCTCACTGTGGAGAAGGGCTCTACTACCCTGGTTCAGGAATT
GCTCAGTTCAGCATAGACTACAATAATGTAAGTAAATGCAGAGGGTTGGCAATAAATGTGACCTGAATA
TTCGCCGTCCACTGGCACTGGAGTCATGCTTGTCTTAGTTTCTGGGACACAGTGCCTTTGCCTTGTC
CTTGGTGGATTCTGGCTCTGGAACCTCTCAGGACATTCTGGTATTTGTTGAAAATTCAGTAGCAGCTCAC
TTAGAAGCCATAACTCTGTGCTCGGAACAGCCATCCCAGCTGAAATGTAACATTAACAGAAATGGACTGG
AACTGTGGACCCAGTTAGAAAAGACGTCATTTACTCTAAAGATCTCAAAGGCAACTCGCCATCTTGGGA
CAAAACAATGAAAGGAACCGTGGCCACTTACCTGGGTGGCGTTCCAGATATTTCTTTCAGTGCCACACCA
GTGAATGCTTTTTACAGCGGCTGCATGGAAGTGAACATCAACGGGGTACAGTTGGATCTGGATGAAGCCA
TTTCAAACATAATGACATTAGAGCTCACTCCTGTCCGTGAGGAGGAAATCCAGAAGAACTTC

ACGCGTACGCGGGCCGCTCGAGCAGAACTCATCTCAGAAGAGGATCTGGCAGCAAATGATATCCTGGATT
ACAAGGATGACGACGATAAGGTTTAA

Protein Sequence: >RR213318 representing NM_031086
 Red=Cloning site Green=Tags(s)

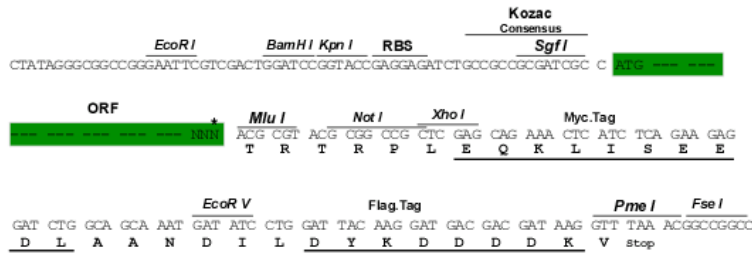
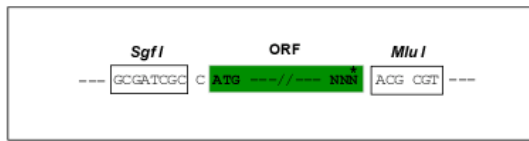
MRVLSVRFVLLACLALVLPVSETNFLSKERASQVLVRKRRANTLLEETKKGNERECIEELCNKEEARE
 VFENNPETDYFYPKYLGCLGAFRVGAFSAARQSANAYPDLRSCVNAIPDQCDPMPCNEDGYLSCKDGQGA
 FTICKPGWQGDKCQFDINECKDPSNINGGCSQTCDNTPGSYHCSCKIGFAML TNKKDKDVDECSLKPS
 VCGTAVCKNIPGDFECECPNGYRYDPSSKCKDVDECSSENTCAQLCVNYPGGYSCYCDGKKGFKLAQDQR
 SCEGIPVCLSLDLKNEYELLYLAEQFAGVLYLKFRLPDITRFSAEFDRTYDSEGIILYAESLDHSNWL
 LIALREGKIEVQFKNEFSTQITTTGGNVINNGIWNMVSVEELDDSVSIKIAKEAVMMINKLGLSKFPDGF
 LDTKIYFAGLPRKVESALIKPINRDLGDCIRGWNLMKQGALGAKEIVEGKQNKHCFLTVEKGSYYPGSGI
 AQFSIDYNNVTNAEGWQINVTLNIRPSTGTGVM LALVSGDTPPFALSLVDSGSGTSQDILVFVENSVAAH
 LEAITLCSQPSQLKCNINRNGLELWTPVRKDV IYSKDLQRQLAILDKTMKGTATYLGVPDISFSATP
 VNAFYSGCMEVNINGVQLDLDEAISKHNDIRAHSCPSVRKIQKNF

TRTRPLEQKLISEEDLAANDILDYKDDDDKV

Restriction Sites:
 Cloning Scheme:

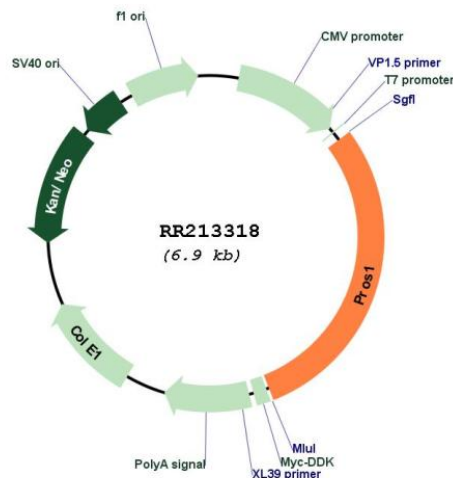
SgfI-MluI

Cloning sites used for ORF Shuttling:



* The last codon before the Stop codon of the ORF

Plasmid Map:



ACCN: NM_031086

ORF Size: 2025 bp

OTI Disclaimer: The molecular sequence of this clone aligns with the gene accession number as a point of reference only. However, individual transcript sequences of the same gene can differ through naturally occurring variations (e.g. polymorphisms), each with its own valid existence. This clone is substantially in agreement with the reference, but a complete review of all prevailing variants is recommended prior to use. [More info](#)

OTI Annotation: This clone was engineered to express the complete ORF with an expression tag. Expression varies depending on the nature of the gene.

Components: The ORF clone is ion-exchange column purified and shipped in a 2D barcoded Matrix tube containing 10ug of transfection-ready, dried plasmid DNA (reconstitute with 100 ul of water).

Reconstitution Method:

1. Centrifuge at 5,000xg for 5min.
2. Carefully open the tube and add 100ul of sterile water to dissolve the DNA.
3. Close the tube and incubate for 10 minutes at room temperature.
4. Briefly vortex the tube and then do a quick spin (less than 5000xg) to concentrate the liquid at the bottom.
5. Store the suspended plasmid at -20°C. The DNA is stable for at least one year from date of shipping when stored at -20°C.

RefSeq: [NM_031086.2](#), [NP_112348.2](#)

RefSeq Size:	3273 bp
RefSeq ORF:	2028 bp
Locus ID:	81750
Cytogenetics:	7q11
MW:	74.6 kDa
Gene Summary:	component of the Protein C/Protein S anticoagulant system; human homolog interacts with factor Xa, factor Va, and phospholipids to inhibit prothrombin activation [RGD, Feb 2006]