

## Product datasheet for RR213311

### Sp5 (NM\_001106552) Rat Tagged ORF Clone

#### Product data:

Product Type:	Expression Plasmids
Product Name:	Sp5 (NM_001106552) Rat Tagged ORF Clone
Tag:	Myc-DDK
Symbol:	Sp5
Mammalian Cell Selection:	Neomycin
Vector:	pCMV6-Entry (PS100001)
E. coli Selection:	Kanamycin (25 ug/mL)
ORF Nucleotide Sequence:	>RR213311 representing NM_001106552 Red=Cloning site Blue=ORF Green=Tags(s)

TTTTGTAATACGACTCACTATAGGGCGGCCGGAATTCGTCGACTGGATCCGGTACCGAGGAGATCTGCCGCCGCGATCGCC

ATGGCCGCTGTGGCTGTCTCCGGAACGACTCACTGCAGGCCTTCTCCAGGACCGCACCCCCAGCGCCT  
CCCCGGACCTGGGCAAGCACTCGCCCTGGCACTGCTGGCCGCCACCTGTAGCCGGATCGGCCAGCCGGG  
CGCTGCGGCGGCACCCGACTTCCCTTCAGGTGCCATGACCCAGCTCTGGGTTACCCCTCCAGGCTTTTC  
CACCCGTGGACTGCCGACATGCCCGCGCACTCGCCAGGAGCCCTGCCGCCACACCCCAAGCCTGGGGC  
TGACGCCACAGAAAACACACCTGCAGCCATCCTTCGGGGCAGCTCAGAGCTCCCGCTCACTCCCCCGC  
GGATCCGTCTACCCCTTACGAGTTCTCGCCCGTCAAGATGCTGCCCTCGAGCATGGCGGCTCTGCCAGCC  
AGCTGCGCGCCGCATACGTGCCCTACGCTGCCAAGCCGCGTTGCCCGGGCTACTCCAACCTGTACTAC  
CCCCGCCGCCACCACCGCTCCACCGCCACCTGCCGCCAGTTGTCCCCCGCCCCGGCCCCGGACGACCT  
CCCCTGGTGGAGCATCCCGCAATCGGGTGTGGGCCGGGAGCTCCGGGGTTCCAGGGACCAGCCTCTCC  
AGCGCCTGTGCCGGGCTCCCCACGCTCCCCGCTTCCCGCTCGGCTGCGGCTGCTGCAGCAGCGGCTG  
CTGCCCTGCAACGGGGCTAGTGTGGGCCGTCGGACTTTGCACAGTACCAGAGCCAGATCGCCCGCT  
GCTGCAGACCAAGGCCCCCTGGCGCCACGGCCAGGAGGTGCCCGCTGCCGCTGCCCAACTGCCAG  
GCAGCTGGCGGTGCCCGGAGCGGGGCAAAAAGAAGCAACAGTGTGCCAGTGCAGGCTGCCGAGGCTGCC  
GCAAGGTGACGCAAGACGTGCGACCTGAAGGCGCACCTGCGCTGGCACACGGGCGAGCGTCCCTTCGT  
GTGCAATTGGCTTTCTGCGGCAAGAGCTTACGCGCTCCGACGAGCTGCAGCGGCACCTCCGGACTCAC  
ACGGGCGAGAAGCGCTTCGCCTGTCCCAGTGGCGAAACGCTTCATGCGAAGCGACACCTCGCCAAGC  
ACGTGAAGACGCACAAAATAAGAAGCTCAAAGTCGCCGAGGCGGGGTGAAGCGGGAGAACCCCGGGGA  
CCTA

ACGCGTACGCGGGCGCTCGAGCAGAACTCATCTCAGAAGAGGATCTGGCAGCAATGATATCTGGATT  
ACAAGGATGACGACGATAAGGTTTAA



[View online »](#)

**Protein Sequence:** >RR213311 representing NM\_001106552  
Red=Cloning site Green=Tags(s)

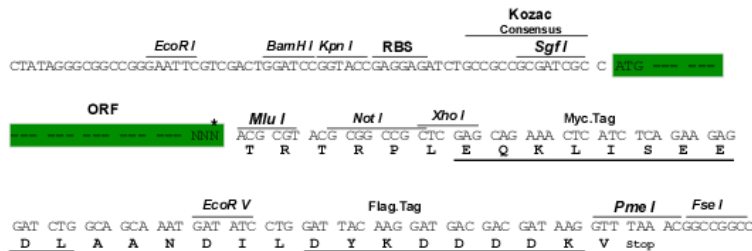
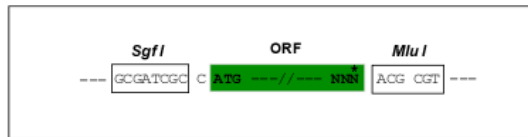
MAAVAVLRNDSLQAF LQDRTPSASPDLGKHSPLALLAATCSRIGQPGAAAAPDFLQVPYDPALGSPSRLF  
 HPWTADMPAHSPGALPPHPSLGLTPQKTHLQPSFGAAHELPLTPPADPSYPYEFSPVKMLPSSMAALPA  
 SCAPAYVPYAAQALPPGYSNLLPPPPPPPPPTCRQLSPAPAPDDLPPWSIPQSGAGPGSSGVPGTSL  
 SACAGPPHAPRFPASAAAAAAAAAALQRGLVLGPSDF AQYQSQAALLQTKAPLAATARRCRRRCPCNCQ  
 AAGGAPEAEPGKKQHVCHVPGCGKVYGKTSHLKAHLRWHTGERPFVCNWLFCGKSFTRSDQLRHLRTH  
 TGEKRFACPECGKRFMRSDHLAKHVKTHQNKLLKVAEAGVKRENPRDL

TRTRPLEQKLISEEDLAANDILDYKDDDDKV

**Restriction Sites:** SgfI-MluI

**Cloning Scheme:**

Cloning sites used for ORF Shuttling:



\* The last codon before the Stop codon of the ORF

**ACCN:** NM\_001106552

**ORF Size:** 1194 bp

**OTI Disclaimer:** The molecular sequence of this clone aligns with the gene accession number as a point of reference only. However, individual transcript sequences of the same gene can differ through naturally occurring variations (e.g. polymorphisms), each with its own valid existence. This clone is substantially in agreement with the reference, but a complete review of all prevailing variants is recommended prior to use. [More info](#)

**OTI Annotation:** This clone was engineered to express the complete ORF with an expression tag. Expression varies depending on the nature of the gene.

**Components:** The ORF clone is ion-exchange column purified and shipped in a 2D barcoded Matrix tube containing 10ug of transfection-ready, dried plasmid DNA (reconstitute with 100 ul of water).

**Reconstitution Method:**

1. Centrifuge at 5,000xg for 5min.
2. Carefully open the tube and add 100ul of sterile water to dissolve the DNA.
3. Close the tube and incubate for 10 minutes at room temperature.
4. Briefly vortex the tube and then do a quick spin (less than 5000xg) to concentrate the liquid at the bottom.
5. Store the suspended plasmid at -20°C. The DNA is stable for at least one year from date of shipping when stored at -20°C.

**RefSeq:** NM\_001106552.1, NP\_001100022.1

**RefSeq Size:** 2121 bp

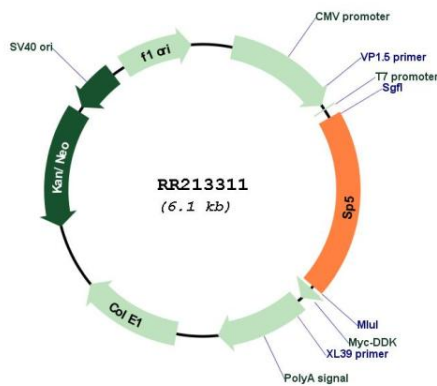
**RefSeq ORF:** 1197 bp

**Locus ID:** 296510

**Cytogenetics:** 3q22

**MW:** 42.1 kDa

**Product images:**



Circular map for RR213311