

Product datasheet for **RR213267**

Cpd (NM_012836) Rat Tagged ORF Clone

Product data:

Product Type: Expression Plasmids
Product Name: Cpd (NM_012836) Rat Tagged ORF Clone
Tag: Myc-DDK
Symbol: Cpd
Vector: pCMV6-Entry (PS100001)
E. coli Selection: Kanamycin (25 ug/mL)
Cell Selection: Neomycin
ORF Nucleotide Sequence: >RR213267 representing NM_012836
Red=Cloning site Blue=ORF Green=Tags(s)

TTTTGTAATACGACTCACTATAGGGCGGCCGGAATTCGTCGACTGGATCCGGTACCGAGGAGATCTGCC
 GCCCGATCGCC

ATGGCGAGCGGCTGGGATGAGCGGCCGCCCTGGCGGCTGGAAAGCCTGCGGCTGCTACCGCCGCCACCGC
 TGCTGCTGCTACTGCTGCTATTGAGGAGCTCGGCCAGGCGCGCACATCAAGAAGGCTGAGCGCACAC
 GACGACCGTCCGGCGGCTCCGAGGCGCCGAGGGCCAGTTTGACCACTACTACCAGAAGCGGCGCTGGGC
 GAGGCACTGGAGGCGGCAGCGGCCGCGGGCCGCCTGGCCTGGCCGTCTCTTCAGCATCGCAATTTCGG
 TGGAGGGCCGACCGCTGTGGGTGCTGCGCCTCACGGCTGGCCTGGGGCCGCCGCCACCCCGCCGCCGT
 GGGGCTGGACGCCGCGGGGCCGCTGCTGCCCGCCGACCGCAGGTGAAGCTGGTGGGTAACATGCACGGC
 GACGAGACGGTGTGCGGCCAGGTGTTGGTCTACCTGGCCGTGAGCTGGCGTCCGGCTACCGCCGCGGGG
 ACCCGCGCTGGTCCGCTGCTCAACACCACCGACGTATATTTGCTGCCAGCCTGAATCCGGATGGCTT
 CGAACGCGCTCGGAGGGTACTGCGGCTCGGCGACAGCGGTCCGCTGGGACCAGCGGCCGAGACAAC
 AGCCGAGGCCGACCTCAACCGCAGTTCCTGACCAGTTCAGCACGGGGAGCCACCTTCCCTGGATG
 AGGTGCCAGAGGTGCGCGCCCTCATCGACTGGATCCGACGGAACAAGTTTGTGCTTCTGGAATCTTCA
 TGGTGGCTCAGTGGTAGCAAGCTATCCTTTGATGATTCTCCCGAGCATAAGACCACTGGAATCTATAGC
 AAAACCTCCGATGATGAAGTCTTTCGATACTTGGCGAAAGCTTATGCTTCTAACCACCCTATAATGAGAA
 CTGGTGAACCCATTGTCCAGGAGATGAAGAGGAGACTTCAAAGACGGGATCACGAACGGTGGCAGCTG
 GTATGATGTGGAAGTGGTATGCAAGATTACAATATGTGTGGGCCAACTGTTTTGAGATCAGATTAGAA
 TTATCTTGCTGCAAAATACCCACCTGCTTCTCAGCTTCGACAAGAATGGGAGAACAACCGTGGATCTTGA
 TCACATTGATTGAAAAGTCCACATTGGAATTAAGGATTTGTTAAAGACTCAGTCACAGGCTCTGGGTT
 GGAGAATGCAACCATCTCAGTGGCTGGTATTAATCATAATACACAACCTGGGAGATTCCGGTATTCCAC
 AGACTGCTATTCTGGAAGTTACAATTTACAGCGGTTTACCTGGGTATATGCCGTTGACTATTAATA
 ATATAGTGGTGAAGAAGGACCAGCCACAGAGATAGATTTCTCCCTTCAACCAACTGTGATGTCAAGT
 GCCTGACTCGACTGAGGCTGTGACAACCTCCCGGCACAGTTGCCGTTCTAATATTCTCCTGGAACACCA
 TCGTCCCACAGCCAATTCAGCCTAAAGACTTTACCACCACCATTTTCTGACATGGAAATCTTCTTGA
 GAAGATTTGCAATGAATATCCTAACATCACTCGCCTTTATTCTCTGGAAAGTCCGTAGAGTCGAGAGA
 ACTGTATGTGATGGAGATATCTGACAACCCAGGCGTCCATGAACCAGGTGAACCAGAAATTAATATATT



[View online »](#)

GGAAATATGCATGGAAATGAAGTGGTTGGAAGAGAACTGCTATTGAATCTCATCGAATACCTCTGCAAGA
ACTTTGGAACAGACCCTGAAGTAACAGATTTGGTTGCGAGCACTAGAATTCACCTCATGCCATCCATGAA
TCCTGATGGGTATGAGAAGTCCCAAGAAGGAGACTCGATAAGTGTAGTTGGCAGAAAACAACGCAACAAC
TTTGACCTAAACCGAAATTTCCAGACCAGTTTGTCCGATCACAGATCCTACCCAACCTGAAATATCG
CTGTGATGAGCTGGGTGAAGGCCTATCCGTTTGTGCTGTCGGCCAATCTGCATGGAGGTTCTTGGTGGT
TAACTACCCTTATGATGATAATGAACAAGGAGTTGCCACATACAGCAAATCACCAGATGACGCCGTGTTT
CAACAAATAGCACTTTCTTATTCCAAGGAAAACCTCGCAGATGTTCCAAGGTAGACCTTGCAAAGACATGT
ACCTTAATGAGTATTTTCCCTCATGGCATAACGAATGGAGCGAGTTGGTATAATGTCCAGGTGGTATGCA
GGACTGGAACATTTACAGACGAATTGCTTTGAAGTAACCATCGAACTAGGTTGTGTGAAATATCCATTC
GAGAAGGAACTGCCAAAGTACTGGGAGCAAAACCGGAGATCTCTAATCCAGTTTATGAAACAGGTTTCATC
AGGGTGTCAAAGGATTTGTTCTTGATGCCACAGATGGTAGGGCATATTAATGCCACCCTCAGTGTTC
TGAAATTAATCACCCAGTGACGACTTACAAAGCTGGAGATTACTGGCGTCTCTTGGTCCCAGGGACATAT
AAAATCACAGCATCTGCTCGAGGTATAACCCCGTCACCAAGAACGTGACCGTCAGGAGTGAAGGTGCTA
TTCAGGTCAACTCACACTTGTTCGATCTTCAACAGATGCAAACAATGAGTCAAAGAAAGGAAAGGGGCA
TAGCACCAGCACTGATGACACCAGCGACCAACTTCTAAGGAGTTTGAAGCACTGATCAAACACCTTTCCG
GCTGAGAAATGGCTTGAAGGCTTCATGTTAAGCTCGTCCCTCAGACCTGGCTCTGTATCGATACCATTCT
ACAAAGACTTATCCGAGTTCCTGAGAGGACTCGTAATGAACTACCCACACATTACAAACCTTACCACTTT
GGGACAGAGTGTGAATATCGTCACATTTGGTCCCTTGAATCTCCAATAAGCCCAACATATCAGAACCT
GAAGAACCGAAGATTCGTTTTGTTGCTGGTATCCATGGAAACGCTCCAGTTGGCACTGAACTGCTTTTGG
CTCTGGCAGAATTTCTTGGCTGAATTACAAAAAGAAATCCAGTTGTTACCAATTGGTTGACAGGACTAG
AATTGTGATTGTCCTCTCTGAATCCAGATGGGAGAGCGGACAGGAGAGAAAGACTGTACCTCGAAG
ACTGGGCACACAAATGCCCGTGGCAGGGACCTGGACACAGACTTACAAGTAATGCTTCCAACCTGAGA
CCAAAGCCATCATTGAAAACCTTGATTCAAAAACAGGATTTACGCCTTTCCATTGCTTTAGATGGTGGTTC
TGTGCTGGTCACATATCCGTACGACAAGCCAGTCCAGACAGTGGAAAACAAGAAACGTTAAAGCATCTG
GCGTCTCTTTATGCAAATAACCACCCATCAATGCACATGGGTGAGCCAGTTGCCCAAATAATTCAGATG
AGAACATACCAGGAGGAGTATGCGGGGAGCAGAGTGGCACAGTACCTGGGAGCATGAAGGATTATAG
TGTCACTATGGCCATTGCCAGAAATCACAGTATACACAAGCTGCTGCTACTTCCAAGTGCAGCTCAA
CTCCCTGCCCTATGGGCAGAGACAAGAAGTCTCTCCTCAGCATGCTGGTGGAGTCCACAAAGGAGTCC
ATGGGTTAGTAAAAGACAAGACTGGTAAACCAATCTCTAAAGCAGTAATTGTAATCAATGAAGGAATAAG
AGTACACACAAAAGAGGGGGTATTTCCATGTGCTTTTAGCTCCTGGGGTCCATAACATCAATGCCATC
GCTGATGGATATCAGCAACAGCATTACAGGTCTTTGTGCATCATGATGCAGCCAGTTCTGTGGTATAG
TCTTTGATACAGATAACCGGATATTTGGTTTGCCAAAGGAACTTGTGGTAACTGTGTGAGTGCACCAT
GTCAGCGCTGATCCTCACGGCTTGCATCATTTGGTGCATCTGCTCTATCAAGTCTAACAGACACAAAGAT
GGCTTCCACCGGCTGCGGAGCATCATGATGAATATGAAGATGAAATTCGCATGATGTAACCTGGCTCTA
AGAAGTCCCTTTAAGCCATGAGTTCAGGATGAAACGGACACAGAGGAAGAGACATTATATTCTAGCAA
ACAT

ACGCGTACGCGGCGCTCGAGCAGAACTCATCTCAGAAGAGGATCTGGCAGCAAATGATATCCTGGATT
ACAAGGATGACGACGATAAAGTTTAA

Protein Sequence: >RR213267 representing NM_012836
 Red=Cloning site Green=Tags(s)

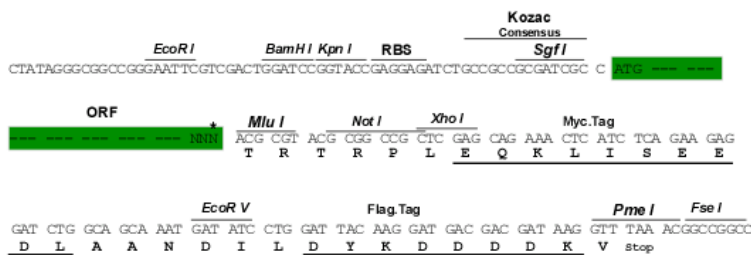
MASGWDERPPWRLESRLPPPPPLLLLLLLRSSQAAAHIKKAETTTTGGSEAAEQFDHYHHEAALG
 EALEAAAAAGPPGLARLFSIGNSVEGRPLWVLRRLTAGLGPPPTPAAVGLDAAGPLLPGRPQVKLVGNMHG
 DETVSRQVLYLARELASGYRRGDPRLVRLNNTDYYLLPSLNPDPGFERAREGDCGLGDSGPPGTSGRDN
 SRGRDLNRSFPDQFSTGEPPSLDEVPEVRALIDWIRRNKFVLSGNLHGGSVVASYPFDDSPHKTTGIYS
 KTSDDDEVFRYLAKAYASNHPIMRTGEPHCPGDEEETFKDGITNGAHWYDVEGGMQDYNVWANCFEITL
 LSCCKYPPASQLRQEWENNRESLITLIEKVHIGIKGFVKDSVTGSGLENATISVAGINHNITTRFRGDFH
 RLLIPGSYNLTAVSPGYMPLTINNIVVKEGPATEIDFSLQPTVMSVVPDSTEAVTTPGTAVPNIPPOTP
 SSHQPIQPKDFHHHHPDMEIFLRRFANEYPNITRLYSLGKSVESRELYVMEISDNPGVHEPGEPEFKYI
 GNMHGNEVVGRELLNLIEYLCKNFGTDPEVTDLVRSTRIHLMPSMNPDPGYEKSQEGDSISVVGRRNSNN
 FDLNRNFPDQFVPI TDPTQPETIAVMSWVKAYPFVLSANLHGGSLVVNYPYDDNEQGVATYSKSPDDAVF
 QQIALSYSKENSQMFQGRPCKMYLNEYFPHGITNGASWYNVPGGMQDWNYLQTNCFEVTIELGCVKYPF
 EKELPKYWEQNRSLIQFMKQVHQVKGFLDATDGRGILNATLSVAEINHPVTTYKAGDYWRLLVPGTY
 KITASARGYNPVTKNVTVRSEGAIQVNF TLVRSSTDANNEKKGKGGHSTSTDDTSDPTSKEFEALIKHLS
 AENGLGFM LSSSSDLALYRYHSYKDLSEFLRGLVMNYPHITNLTTLGQSVYRHIWSLEISNKPNI SEP
 EEPKIRFVAGIHGNAPVGTLELLALAEFLCLNYKKNPVVTVLDRTRIVIVPSLNPDPGRERAQEKDCTSK
 TGH TNARGRLD TDFTSNASQPETKAI IENLIQKQDFSL SIALDGGSVLVTYPYDKPVQTVENKETL KHL
 ASLYANNHPSMHMGQSPCPNNSDENIPGGVMRGAEWHSHLGSMKDYSVTYGHCPETVYVTSCCYFPSAAQ
 LPALWAENKSKLLSMLVEVHKGVHGLVKDKTGKPI SKAVIVLNEGIRVHTKEGGYFHVLLAPGVHNINAI
 ADGYQQHSQVFVHDAASSVIVFDTDNRIFGLPRELVTVSGATMSALILTACIIWCICSIKSNRHKD
 GFHRLRQHHEYEDEIRMMSTGSKKSLLSHEFQDETDTEETLYSSKH

TRTRPLEQKLISEEDLAANDILDYKDDDDKV

Restriction Sites:
 Cloning Scheme:

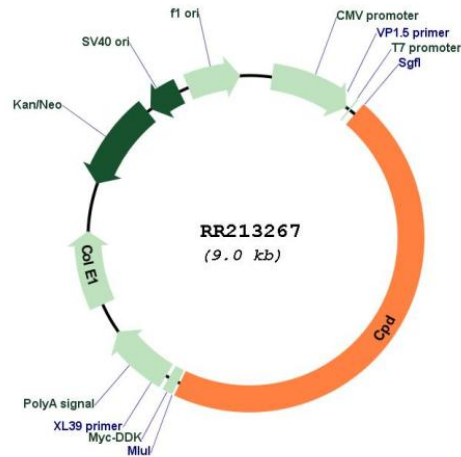
SgfI-MluI

Cloning sites used for ORF Shutting:



* The last codon before the Stop codon of the ORF

Plasmid Map:



ACCN: NM_012836

ORF Size: 4134 bp

OTI Disclaimer: The molecular sequence of this clone aligns with the gene accession number as a point of reference only. However, individual transcript sequences of the same gene can differ through naturally occurring variations (e.g. polymorphisms), each with its own valid existence. This clone is substantially in agreement with the reference, but a complete review of all prevailing variants is recommended prior to use. [More info](#)

OTI Annotation: This clone was engineered to express the complete ORF with an expression tag. Expression varies depending on the nature of the gene.

Components: The ORF clone is ion-exchange column purified and shipped in a 2D barcoded Matrix tube containing 10ug of transfection-ready, dried plasmid DNA (reconstitute with 100 ul of water).

Reconstitution Method:

1. Centrifuge at 5,000xg for 5min.
2. Carefully open the tube and add 100ul of sterile water to dissolve the DNA.
3. Close the tube and incubate for 10 minutes at room temperature.
4. Briefly vortex the tube and then do a quick spin (less than 5000xg) to concentrate the liquid at the bottom.
5. Store the suspended plasmid at -20°C. The DNA is stable for at least one year from date of shipping when stored at -20°C.

RefSeq: [NM_012836.2](#), [NP_036968.1](#)

RefSeq Size: 4374 bp

RefSeq ORF: 4137 bp

Locus ID: 25306

UniProt ID: [Q9JHW1](#)

Cytogenetics: 10q24

MW: 152.6 kDa

Gene Summary: putative carboxypeptidase D protein that may participate in peptide processing in the secretory pathway; alternatively spliced CPD-N form is induced by prolactin and is localized to the nucleus [RGD, Feb 2006]