

Product datasheet for **RR213205**

Psph (NM_001009679) Rat Tagged ORF Clone

Product data:

Product Type: Expression Plasmids
Product Name: Psph (NM_001009679) Rat Tagged ORF Clone
Tag: Myc-DDK
Symbol: Psph
Synonyms: MGC109524
Vector: pCMV6-Entry (PS100001)
E. coli Selection: Kanamycin (25 ug/mL)
Cell Selection: Neomycin
ORF Nucleotide Sequence: >RR213205 representing NM_001009679
Red=Cloning site Blue=ORF Green=Tags(s)

TTTTGTAATACGACTCACTATAGGGCGGCCGGAATTCGTCGACTGGATCCGGTACCGAGGAGATCTGCC
GCC**CGATCGCC**

ATGGTCTCCCACTCAGAGCTGAGGAAGCTTTCTGTTCCGGCTGATGCAGTGTGCTTTGATGTTGATAGCA
CAGTCATCAGAGAAGAGGAATCGATGAGCTGGCCAAATTCGTGGTGTGGAGGCTGCAGTGTCTGAAAT
GACACGGAGAGCCATGGGAGGAGCGTTGCCTTTCAAAGATGCGCTCACTGAGCGCTGGCACTGATCCAG
CCCTCCAGGGATCAGGTGCAGAGCTGCTGGCTGAACACCCGCCACACCTGACCCCGGGGATAAGGGAGC
TGTAAGCCGCTCCAGGAGCGGAATGTTCAAGTGTTCCTCATCTCCGGGGCTTTAGGAGTATTGTGGA
GCACGTTGCTGCAAAGCTCAACATCCCCACAACCAATGTCTTTGCCAATAGGCTGAAATCTACTCAAC
GGTGAAGTACGCAGGTTTTGACGAGACGCAGCCGACAGCCGAGTCAGGTGGGAAAGGAAAGTTATTGGAT
TTTTAAAGGAAAATTTCACTTTAAGAAAATAATCATGATTGGAGACGGAGCCACAGACATGGAAGCCTG
CCCTCCCGCTGATGCCTTCATTGGCTTTGGAGGCAACGTGATCAGGCAGCAGGTTAAGGACAATGCCAAG
TGGTACATCACTGACTTTGTTGAACTGCTAGGAGAAGTGAAGAA

ACGCGTACGCGGCCGCTCGAGCAGAAACTCATCTCAGAAGAGGATCTGGCAGCAAATGATATCCTGGATT
ACAAGGATGACGACGATAAGGTTTAA



[View online »](#)

Protein Sequence: >RR213205 representing NM_001009679
Red=Cloning site Green=Tags(s)

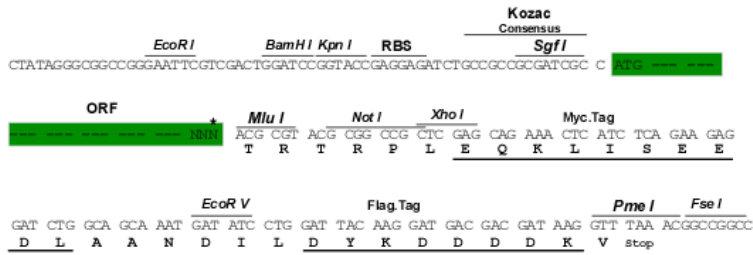
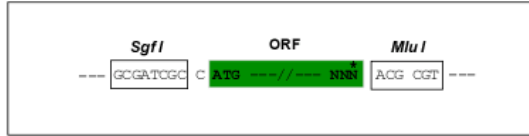
MVSHSELRKLFC SADAVCFD VDVSTVIREEGIDELAKFCGVEAAVSEMTRAMGGALPFKDALTERLALIQ
 PSRDQVQRLLAEHPPHLTPGIRELVSRLQERNVQVFLISGGFRSIVEHVAAKLNIPPTNVFANRLKFYFN
 GEYAGFDETPTAESGGKGVIGFLKEKFHFKKIIMIGDGATDMEACPPADAFIGFGGNVIRQQVKDNAK
 WYITDFVELLGELEE

TRTRPLEQKLISEEDLAANDILDYKDDDDKV

Restriction Sites: Sgfl-MluI

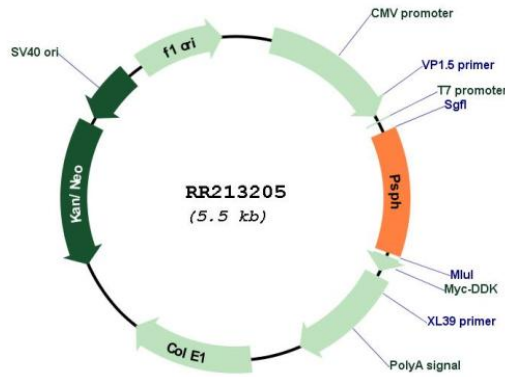
Cloning Scheme:

Cloning sites used for ORF Shuttling:



* The last codon before the Stop codon of the ORF

Plasmid Map:



ACCN: NM_001009679

ORF Size: 675 bp

OTI Disclaimer:	The molecular sequence of this clone aligns with the gene accession number as a point of reference only. However, individual transcript sequences of the same gene can differ through naturally occurring variations (e.g. polymorphisms), each with its own valid existence. This clone is substantially in agreement with the reference, but a complete review of all prevailing variants is recommended prior to use. More info
OTI Annotation:	This clone was engineered to express the complete ORF with an expression tag. Expression varies depending on the nature of the gene.
Components:	The ORF clone is ion-exchange column purified and shipped in a 2D barcoded Matrix tube containing 10ug of transfection-ready, dried plasmid DNA (reconstitute with 100 ul of water).
Reconstitution Method:	<ol style="list-style-type: none">1. Centrifuge at 5,000xg for 5min.2. Carefully open the tube and add 100ul of sterile water to dissolve the DNA.3. Close the tube and incubate for 10 minutes at room temperature.4. Briefly vortex the tube and then do a quick spin (less than 5000xg) to concentrate the liquid at the bottom.5. Store the suspended plasmid at -20°C. The DNA is stable for at least one year from date of shipping when stored at -20°C.
RefSeq:	NM_001009679.1 , NP_001009679.1
RefSeq Size:	1166 bp
RefSeq ORF:	678 bp
Locus ID:	304429
UniProt ID:	Q5M819
Cytogenetics:	12q13
MW:	25 kDa
Gene Summary:	Catalyzes the last step in the biosynthesis of serine from carbohydrates. The reaction mechanism proceeds via the formation of a phosphoryl-enzyme intermediates (By similarity). [UniProtKB/Swiss-Prot Function]