

Product datasheet for **RR213181**

Adgrl3 (NM_130822) Rat Tagged ORF Clone

Product data:

Product Type: Expression Plasmids
Product Name: Adgrl3 (NM_130822) Rat Tagged ORF Clone
Tag: Myc-DDK
Symbol: Adgrl3
Synonyms: Cirl3; Lec3; Lphn3
Vector: pCMV6-Entry (PS100001)
E. coli Selection: Kanamycin (25 ug/mL)
Cell Selection: Neomycin
ORF Nucleotide Sequence: >RR213181 representing NM_130822
Red=Cloning site Blue=ORF Green=Tags(s)

TTTTGTAATACGACTCACTATAGGGCGCCGGGAATTCGTCGACTGGATCCGGTACCGAGGAGATCTGCC
GCC**CGGATCGCC**

ATGTGTCCACCTCAGCTGTTTCATCCTCATGATGCTTTTAGCACCTGTAGTTCATGGTGGCAAGCACAATG
AGAGACATCCAGCCCTCGCTGCTCCACTGCGACATGCTGAGCACAGCCCAGGAGGCCCTCTCCCTCCAG
ACATCTTCTTCAGCAGCCAGCTGCAGAGCGCTCTACAGCTCATCGAGGACAAGGGCCACGTGGAAGTCC
AGAGGAGTTTCGCGGACCCGGTGCCTCCAGGACACAGATTGCAGCCCAAGCTTTCAGCCGTGCCCAATTC
CCATGGCAGTGGTCCGCAGAGAGCTCTCCTGTGAGAGCTACCCATTGAGCTACGCTGTCCAGGCACAGA
CGTCATCATGATCGAAAGCGCCAACTACGGGAGGACAGATGACAAGATCTGTGACTCGGACCCTGCTCAG
ATGGAGAATATTCGGTGTATCTGCCAGATGCCTATAAGATTATGTCTCAAAGATGCAATAACAGAACCC
AGTGTGCAGTGGTGGCAGGTCTGATGTATTTCCAGACCCATGTCGGGAACATAATAACACCTTGAAGT
GCAGTATGAATGTGTCCCTTACAAAGTGAACAAAAAGTTTTCTTTGTCCCGGACTGCTCAAAGGAGTG
TACCAGAGCGAACACTTGTGTAATCTGACCACCAATCTGGGGCATGGTGCAAAGACCCCTACAGGCTT
CTGACAAGATTTACTATATGCCCTGGACTCCCTACAGAACCGATACCCCTGACAGAGTATTCATCCAAGA
TGACTTCATTGCTGGAAGCCGACAACATACATAAGCTCCCTCACAGAGTGGATGGTACTGGATTTGTA
GTATATGATGGTCCCTGTTCTTCAACAAGGAGCGTACAAGGAACATAGTAAAGTTTGATTTGAGGACTA
GGATAAAGAGTGGAGAGGCAATCATAGCAAATGCTAACTACCATGATACCTCCCATACCGATGGGGTGG
CAAGTCCGACATAGACTTGGCAGTGGATGAAAACGGATTATGGGTAATCTATGCAACAGAACAGAACAA
GGCAAAATTGTTATTAGCCAGTTGAACCCTTACACCCTACGGATTGAGGGGACATGGGACTGCTATG
ATAAAAGTCTGCTTCCAATGCATTTATGATTTGTGGGATTCTGTATGTGGTCAAGTCTGTATATGAGGA
TGACGACAATGAGGCCACCGTAATAAGATTGACTACATTTACAATACTGACCAAAGCAAGGATAGCCTG
GTGGATGTACCCTTTCCAACTCATACAGTACATAGCAGCCGTGGACTACAATCCAGGGACAATCTGC
TGTACGTGTGGAACAACCTACCATGTTGTCAAATACTCCTTGGACTTCGGGCCTCTGGATAGCAGATCAGG
GCCAGTGCATCATGGACAAGTTTCTACATCTCTCCACCGATTACCTTGACTCTGACCTGGAAAGGCC
CCTGTCAGAGGGATTTCTACCACAGGACCCTGGGTATGGGAAGCACGACCACCAGCACCACCTCCGGA



CTACCACCTGGAACCTAGGGAGGAGTACAACGCCATCCTTGCCTGGCAGAAGAAACCGCAGTACCAAGTAC
 GCCGTCCCAGCGATTGAGGTGCTGGATGTTACCACACACCTGCCATCTGCAGCCTCCCAAATCCCAGCG
 ATGGAAGAGAGCTGCGAGGCTGTGGAAGCCGAGAGATCATGTGGTTAAGACCCGACAGGGGCAAGTAG
 CAAAGCAGTATGCCAGCAGGAACCATAGGTGTATCAACTACCTGTGTCTTGCCTGATGGAATATG
 GGATCCCCAAGGACCAGATCTCAGCAACTGCTCTTCTCCTTGGGTCAATCACATAACACAGAAGCTGAAA
 TCTGGAGAAAACAGCTGCCAATATTGCCAGAGAGCTAGCAGAACAGACCAGAAATCATTGAAACGCCGGGG
 ATATCACCTACTCAGTTCTGTGCCATGGACCAACTGGTTGGCCTCCTGGACGTACAGCTCAGGAATTTGAC
 ACCAGGGGGGAAGGACAGTGTCTGCCGAAGCTTGAACAAGCTTCAGAAAAGAGAGCGCTCTTGCAGAGCC
 TATGTCCAGGCGATGGTGGAGACAGTTAACAATCTCCTTCAGCCACAAGCTCTGAATGCGTGGAGGGACC
 TGACGACAAGTGATCAACTACGCGCAGCCACCATGTTGCTCGACACTGTGGAGGAGAGTGTCTTCTGTGTT
 AGCCGATAACCTTTTGAAGACCGACATTGTGAGGGAGAATACAGACAATATTCAGTTGGAGGTTGCAAGG
 CTGAGCACGGAAGGAAACCTAGAAGATCTAAAATTTCCAGAAAACACGGGCCACGGAAGCACTATACAGC
 TTTCCGAAAACACGTTAAAGCAAATGGCCGAATGGAGAGATTAGAGTGGCCTTTGTCTGTATAACAA
 CCTGGGTCCTTATTTATCTACGGAGAATGCCAGTATGAAGTTGGGCACAGAAGCTATGTCCACAATCAC
 TCAGTTATCGTCAATCCCTGTTATTACAGCAGCAATAAATAAGGAATTCAGTAATAAAGTGTATTTGG
 CTGATCCTGTGGTATTTACTGTAAACATATCAAGCAGTCAGAGGAAAATTTCAACCCTAACTGTTCAAT
 TTGGAGCTATTCCAAGCGCACAATGACAGGTTATTGGTCAACACAAGGCTGTGACTCCTGACAACGAAC
 AAGACACACACTACGTGCTCCTGTAAACCACCTCACCAACTTCGCAGTATTAATGGCACATGTGGAAGTTA
 AGCACAGCGATGCCGTCCACGATCTTCTTCTGGATGTGATCACGTGGGTCCGAATCCTGTTGTCTTGT
 TTGTCTCTGATCTGCATCTTCACATTTCTGTTCTTCCGTGGGCTTCAGAGCGACCGTAACACCATTAC
 AAGAACCTGTGCATCAGCCTGTTTGTGGCAGAAGTGTCTTCTGATTGGGATCAACAGAACCGACCAAC
 CGATTGCCTGTGAGTGTGGCGCTCTTTGCATTTCTTCTTCTTGGCGCCTTCACCTGGATGTTTCT
 AGAAGGGGTACAGCTGTATATCATGTGGTGGAGGTCTTTGAGAGTGAACATTCCCGTAGGAAGTACTTC
 TATCTGGTTGGCTACGGGATGCCCGCACTCATCGTGGCCGTTTCTGCTGCAGTCGACTACAGGAGCTATG
 GAACAGACAAAGTATGTTGGCTTCGCTTACACCTACTTCATTTGGAGTTTTATAGGACCAGCGACCTT
 GATAATTATGCTGAATGTAATCTTCTCGGGATTGCTTTATACAAAATGTTTCACCATACTGCCATACTG
 AAACCTGAATCAGGCTGTCTTGATAATCAACTATGAGGATAACAGACCCTTCATCAAGTCATGGGTTA
 TAGGTGCAATAGCGCTGCTCTGCCTATTAGGATTGACCTGGGCTTTGGACTCATGTATTAATGAAAAG
 CACAGTCATCATGGCGTATCTTCCACATTTTCAATTCTCTACAGGGGATGTTTATATTCATTTTCCAC
 TGTGTCTACAGAAGAAGGTACGGAAAGAGTATGGGAAATGCCTACGGACGCATTGCTGTAGTGGGAAAA
 GCACGGAGAGTTCGATTGGCTCAGGAAAACATCTGGTCTCGAACTCCAGGACGGTATTCACAGGCTC
 ACAGAGCCGGATTCCGAGAATGTGAATGACACCGTCCGAAAGCAGTCAGAGTCATCCTTACACTGGA
 GACATAAACAGCTCAGCGTCGCTCAACAGAGGATCCTATCTTCCCTGCATTACAGGCGTGTGTAACATATT
 TAGAGGGGCTTCTGAACAATGCCAGGGATACAAGTGCATGGATACTCTACCACTGAATGGTAACCATGG
 CAACAGTTACAGCATTGCTGGCGGCGAATACCTGAGCAACTGTGTGCAAATATAGACCCTGGCTATAAC
 CACAACGAGACCGCCTAGAAAAAAGATCCTAAAGGAACTCACTCCAACATATCCCTTCATACCTGA
 ACAACCACGAGCGCTCCAGCGAACAGAACCGGAACATGATGAACAACCTGGTGGACAACCTAGGCAGTGG
 GAGTGAAGATGACGCCATAGTCTGGATGACGCAGCGTCTTTAACACGAGGAGAGTCTGGGCTGGAA
 CTCATTCACGAGGAATCGGATGCTCCCTTGTGCCCCGAGGGTTTACTCCACCGATAACCACAGCCAC
 ACCATTACAGCAGGAGGGCGCTCCCCAGGACCACAGCGAGAGTCTTCCCTCTGCTAACCGACGAGCA
 CACAGAAGACCCGAGTCACCGCACAGGGACTCTGTACACCAGCATGCCGGCCCTGGCCGGTGTGCC
 GCTGCAGACAGTGTGACCACCAGCACCCAGACCGAAGCCGACGCGCCAAAGGGTGGTACGCCGAAGATG
 TTTACTACAAAAGCATGCCAAACCTGGGCTCCAGAAAACATGTGCACCCGCTGCACGCCTACTACCAGCT
 AGGGCGAGGCAGCAGCGATGGATTATAGTTCTCCCAATAAAGATGGGGCTCTCCGGAGGGGACTTCC
 AAAGGACCGGCGCACTTGGTCACTAGTCTA

ACGCGTACGCGGCCGCTCGAGCAGAACTCATCTCAGAAGAGGATCTGGCAGCAAATGATATCCTGGATT
 ACAAGGATGACGACGATAAGGTTTAA

Protein Sequence: >RR213181 representing NM_130822
 Red=Cloning site Green=Tags(s)

MCPPQLFILMMLLAPVVHGGKHNERHPALAAPLRHAEHSPGGPLPPRHLLQQPAAERSTAHRGQGPRGTA
 RGVRGPGAPGAQIAAQAFSRAPIPMAVVRRELSCEYPIELRCPGTDVIMIESANYGRTDDKICDSDDPAQ
 MENIRCYLPDAYKIMSQRNRTQCAVVAGPDVFPDPCPGTYKYLEVQYECVPYKVEQKVFLLCPGLLKG
 YQSEHLFESDHQSGAWCKDPLQASDKIYMPWTPYRTDTL TEYSSKDDFIAGRPTTTYKLPHRVDGTG
 VYDGFALFNKERTRNIVKFDLRTRIKSGEAIANANYHDTSPYRWGGKSDIDLAVDENGLWVIYATEQNN
 GKIVISQLNPYTLRIEGTWDYDKRSASNAFMICGILYVVKSVYEDDDNEATGNKIDYIYNTDQSKDSL
 VDVPFPNSYQYIAAVDYNPRDNLLYVWNNYHVVKYSLDFGPLDSRSGPVHHGQVSYISPPIHLDSDLERP
 PVRGISTTGPLMGSTTTSTLRTTTWNLGRSTTPSLPGRNRSTSTPSPAIEVLDVTHLPSAASQIPA
 MEESCEAVEAREIMWFKTRQGQVAKQSCPAGTIGVSTYLCLAPDGIWDPQGPDL SNCSSPWVNHITQKLL
 SGETAANIARELAEQTRNHLNAGDITYSVRAMDQLVGLLDVQLRNLTPGGKDSAARSLNKLQKRERS
 CRAWYQAMVETVNNLLQPALNAWRDLTTSQDLRAATMLLDVVEESAFVLADNLLKTDIVRENTDNIQLE
 VARLSTEGNLEDLKFPEPTGHGSTIQLSANTLQKQNGRNGEIRVAFVLYNNLGPYLSTENASMKLGTEAM
 STNHSVIVNSPVITAAINKEFSNKVYLADPVVFTVKHIKQSEENFNPNCSFWSYSKRTMTGYWSTQGC
 RLLTTNKTHTTCSCNHLTNFAVLMAHVEVKHSDAVHDLLDVITWVGILLSLVCLLICIFTFCFRGLQSD
 RNTIHKNLCSISLFAELLFLIGINRTDQPIACAVFAALLHFFFLAAFTWMFLEGVQLYIMLVEVFESE
 HSRKRYFYLVGYGMPALIVAVSAVDYRSYGTDKVCWLRDLTYFIWSFIGPATLIIMLNIVFLGIALY
 KMFHHTAILKPESGCLDNINYEDNRPFIKSWVIGAIALLCLLGLTWAFGLMYINESTVIMAYLFTIFNS
 LQGMFIFIFHCVLQKVRKEYGKCLRTHCCSGKSTESSIGSGKTSGRTPGRYSTGSQSRIRRMWNTV
 VRKQSESSFITGDINSSASLNRSYLPICIQACVTYLEGLNNARDTSVMDTLPNGNHGNSYSIAGGEYL
 SNCVQIIDRGYNHNETAEKKIKELTSNYIPSYLNNHERSEQRNMMNKLVNLDGSGEDDAIVLDDAAS
 FNSHEESLGLLELTHEESDAPLLPPRVYSTDNHQPHHYSRRRLPQDHSSEFFPLL TDEHTEDPQSP
 HRDSLTYTSMPALAGVPAADSVTTSTQTEAAAAGGDAEDVYKSMPNLGSRNHVHPLHAYYQLGRGSSD
 GFI VPPNKGASPEGTSKGP AHLVTSL

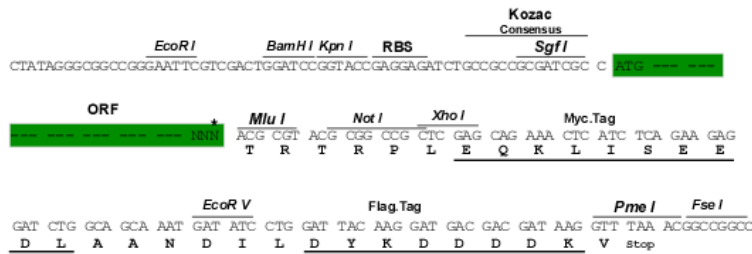
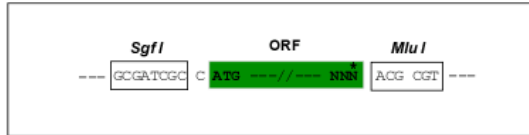
TRTRPLEQKLISEEDLAANDILDYKDDDDKV

Restriction Sites:

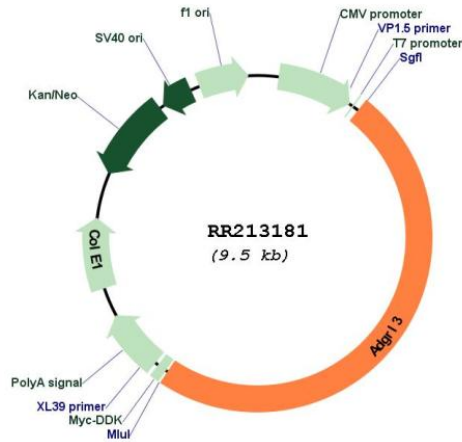
SgfI-MluI

Cloning Scheme:

Cloning sites used for ORF Shuttling:



* The last codon before the Stop codon of the ORF

Plasmid Map:


ACCN: NM_130822

ORF Size: 4650 bp

OTI Disclaimer: The molecular sequence of this clone aligns with the gene accession number as a point of reference only. However, individual transcript sequences of the same gene can differ through naturally occurring variations (e.g. polymorphisms), each with its own valid existence. This clone is substantially in agreement with the reference, but a complete review of all prevailing variants is recommended prior to use. [More info](#)

OTI Annotation: This clone was engineered to express the complete ORF with an expression tag. Expression varies depending on the nature of the gene.

Components: The ORF clone is ion-exchange column purified and shipped in a 2D barcoded Matrix tube containing 10ug of transfection-ready, dried plasmid DNA (reconstitute with 100 ul of water).

Reconstitution Method:

1. Centrifuge at 5,000xg for 5min.
2. Carefully open the tube and add 100ul of sterile water to dissolve the DNA.
3. Close the tube and incubate for 10 minutes at room temperature.
4. Briefly vortex the tube and then do a quick spin (less than 5000xg) to concentrate the liquid at the bottom.
5. Store the suspended plasmid at -20°C. The DNA is stable for at least one year from date of shipping when stored at -20°C.

RefSeq: [NM_130822.1, NP_570835.1](#)
RefSeq Size: 5413 bp
RefSeq ORF: 4653 bp
Locus ID: 170641
UniProt ID: [Q9Z173](#)
Cytogenetics: 14p21
MW: 172.4 kDa
Gene Summary: G-protein-coupled receptor [RGD, Feb 2006]