

## Product datasheet for RR213175

### Nhlrc1 (NM\_199236) Rat Tagged ORF Clone

#### Product data:

Product Type: Expression Plasmids  
 Product Name: Nhlrc1 (NM\_199236) Rat Tagged ORF Clone  
 Tag: Myc-DDK  
 Symbol: Nhlrc1  
 Synonyms: Epm2b  
 Mammalian Cell Selection: Neomycin  
 Vector: pCMV6-Entry (PS100001)  
 E. coli Selection: Kanamycin (25 ug/mL)  
 ORF Nucleotide Sequence: >RR213175 representing NM\_199236  
 Red=Cloning site Blue=ORF Green=Tags(s)

TTTTGTAATACGACTCACTATAGGGCGGCCGGGAATTCGTCGACTGGATCCGGTACCGAGGAGATCTGCC  
 GCC**CGGATCGCC**

ATGGGGGAGGAGGCAGCGGGGTGCGGCCCGAGCTGGTGCAGGAGGCGGAGGTCAGCCTGCTGGAGTGCA  
 AGGTGTGCTTCGAGAGGTTCCGGCCACCGGCAGCAGCGGCCCGCGCAACCTGCCCTGCGCCACGTGGT  
 CTGCTTGGCTGCGTCGCGCCCTCGCGCACCCCGGACGCTGGCCCTCGAGTGTCCCTTCTGCCGGCGG  
 GCCTGCCGAGCTTGTGACACCAGCGATTGCCTGCCGGTGTGCACCTTCTGGAGCTCCTGGCTCCACCC  
 TCCACGGTCCCAGGCTGCCCTCAGCGCCGCTCCTGTGCGCCCGGGGCTCTCACCTGCTACCATGCCTT  
 TGGCGGGTGGGGACCCTAGTGAACCCACGGGGCTTGCAGTGTGCCCAAGACCGGACGGGTAGTAGTC  
 GTGCACGACGGTAAGAGACGGGTCAAGATCTTCGATTCCGGAGGAGGAGGTGCACACCAGTTTGGAGAGA  
 AGGGGGACGCAGCGCATGACGTGAAGTACCCACTGGATGTGCGGGTACCAACGACTGCCATGTGGTTGT  
 CACCGACGCCGGCGACTGCTCCCTCAAAGTGTGGATTCTTTGGCCAGATCAAGCTGGTTGTGGGAAAG  
 CAGTTTTCCCTGCCTTGGGGTGTAGAGATAACCCCTCACACGGGGTCTGGTACTGACGCAGAGGCAG  
 GGACTTGCACCTGCTGGAAGCGGATTTCCCTGAAGGGTCTTCGGAGAATTGAGAGGTTGCAAGCTCA  
 CCTGTGTAATCCCCTGGGGTGGCAGTGTATGGCTCACCGGGCCATCGCGTCTAGAGCATCCTTGT  
 GCCTTGGGGACGTCAAGCGGTAACAACAAGGGTGAAGGTGTTCAACTCCAGTATGCAGCTGATTGGCC  
 AGGTGGACAGCTTCGGACTGAACCTCCTCTCCCTCCAAAATAACCGCCTCAGCTGTGACCTTCGATCA  
 CCAAGGAAACGTGATTGTTGCTGATACCTCTGGCCAGCCATCGTATGCTTGGGAAACCTGAGGAATTT  
 CCAGCCCTGAAGCCTATGGTACTCATGGCCTTCCCCTCCTGTGGCACTGGTCTTACCAAGGAGAATT  
 CTCTTCTGTGCTGGATTCTGCATCCCATTCTATAAAAGTCTTTAAAGTGATGGAGGTAATGGAGGG

AG**CGGACCG**ACGCGTACGCGGCCGCTCGAGCAGAACTCATCTCAGAAGAGGATCTGGCAGCAAATGATATCC  
 TGGATTACAAGGATGACGACGATAAGGTTTAA



[View online »](#)

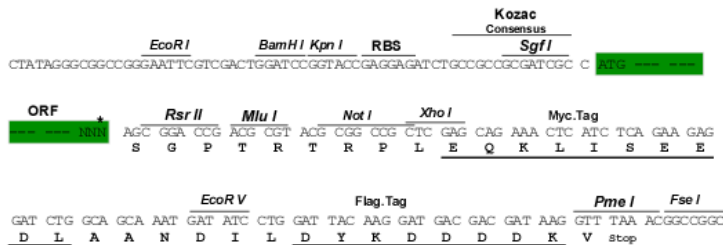
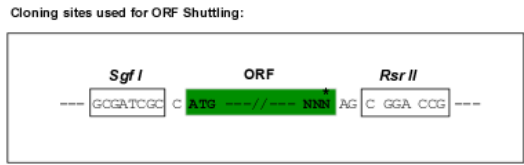
**Protein Sequence:** >RR213175 representing NM\_199236  
 Red=Cloning site Green=Tags(s)

MGEEAAGVRPELVREAEVSLLECKVCFERFGHRQRRPRNLP CGHVVCLACVAAL AHPRTL ALECPFCRR  
 ACACDTS DCLPVLH LLELLG STLHASPAAL SAASCAPGAL TCYHAFGGWGLVNPTGLALCPKTGRVVV  
 VHDGKRRVKIFDSGGGGAHQFGEKGDAAHDVKYPLDVAVTNDCHVVVDAGDCSLKVFDFFGQIKLVVVK  
 QFSLPWGVEITPHNGVLVTD A EAGTLHLL EADFPEGLRRIERLQAHL CNPRGVAVSWL TGAI AVL EHP C  
 ALGTSSGNTRVKVFNSMQLIQVDSFGLNLLFP SKITASAVTFDHQGNVIVADTSGPAIVCLGKPEEF  
 PALKPMVTHGLSRPVALVFTKENSLLVLD SASHSIKVKVMEGNGG

SGPTRTRPLEQKLI SEEDLAANDILDYKDDDDKV

**Restriction Sites:** SgfI-RsrII

**Cloning Scheme:**



\* The last codon before the Stop codon of the ORF

**ACCN:** NM\_199236

**ORF Size:** 1188 bp

**OTI Disclaimer:** The molecular sequence of this clone aligns with the gene accession number as a point of reference only. However, individual transcript sequences of the same gene can differ through naturally occurring variations (e.g. polymorphisms), each with its own valid existence. This clone is substantially in agreement with the reference, but a complete review of all prevailing variants is recommended prior to use. [More info](#)

**OTI Annotation:** This clone was engineered to express the complete ORF with an expression tag. Expression varies depending on the nature of the gene.

**Components:** The ORF clone is ion-exchange column purified and shipped in a 2D barcoded Matrix tube containing 10ug of transfection-ready, dried plasmid DNA (reconstitute with 100 ul of water).

**Reconstitution Method:**

1. Centrifuge at 5,000xg for 5min.
2. Carefully open the tube and add 100ul of sterile water to dissolve the DNA.
3. Close the tube and incubate for 10 minutes at room temperature.
4. Briefly vortex the tube and then do a quick spin (less than 5000xg) to concentrate the liquid at the bottom.
5. Store the suspended plasmid at -20°C. The DNA is stable for at least one year from date of shipping when stored at -20°C.

**RefSeq:** [NM\\_199236.1](#), [NP\\_954706.1](#)

**RefSeq Size:** 1191 bp

**RefSeq ORF:** 1191 bp

**Locus ID:** 364682

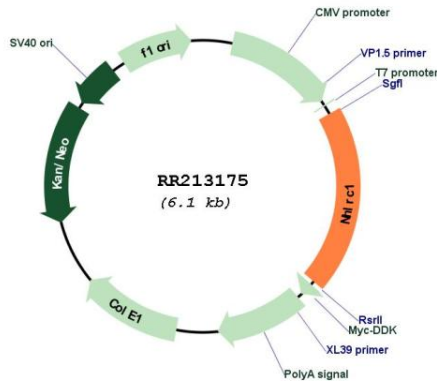
**UniProt ID:** [Q6IMG5](#)

**Cytogenetics:** 17p14

**MW:** 42.1 kDa

**Gene Summary:** human homolog is a putative E3 ubiquitin ligase associated with Lafora progressive myoclonus epilepsy and possibly involved in clearance of polyglucosans from dendrites [RGD, Feb 2006]

## Product images:



Circular map for RR213175