

Product datasheet for **RR213102**

Ppl (NM_001106976) Rat Tagged ORF Clone

Product data:

Product Type: Expression Plasmids
Product Name: Ppl (NM_001106976) Rat Tagged ORF Clone
Tag: Myc-DDK
Symbol: Ppl
Vector: pCMV6-Entry (PS100001)
E. coli Selection: Kanamycin (25 ug/mL)
Cell Selection: Neomycin
ORF Nucleotide Sequence: >RR213102 representing NM_001106976
Red=Cloning site Blue=ORF Green=Tags(s)

TTTTGTAATACGACTCACTATAGGGCGGCCGGGAATTCGTCGACTGGATCCGGTACCGAGGAGATCTGCC
GCC**GCGATCGCC**

ATGCACTCGTCTTCAGGAAGAAAAACAAAGGCAATACAGCCCAACGGTGCAGACGCGGAGCATCTCCA
ACAAGGAACCTCAGATCTGATTGAGCAGCTGCAGAAGAATGCGGACCAGGTGGAAGGAACATTGTGGA
CACCGAGGCCAAGATGCAGAGTGACTTGGCCCGGATGCAAGACGGGCAGCTCCCTGAGCACCGGGACCG
ACCCTGCAGAATGTGTCTGACTCAGAAAAGCTGTGTACGTAAGGAGGAGACTCAGCCATCGCCAAGC
ACATGAAGCACCCACAGGGGACATGATCGCCGAGGACATCCGCCAGCTGAAAGAGCGTGTGACCAACCT
GCGGGGCAAAACAAGCAGATGTACAGCCTGGCAGTGAGAGAGGCTGACCCGAAGGTCAACTGGGATGCA
CTGGTGGATGAGAACTGGACAAGCTGAGCAGCCAGAGTTTTGGGACTGACCTTCTCTGGTGGACAGCC
AGGTGGAGCAACACAACATCTTCCACAATGAAGTCAAAGCCATCGGGCCCACTGGCCAAGGACAAGGA
GCAGAACAGCGAACTCCAAGCCAAGTATCAGAAGTTGCTGGCAGCATCACAGGCTCGGCAGCAGCACCTG
AGCTCGTGCAGGATTACATGCAGCGCTGCACCAATGAGCTGACTGGCTGGACCAGCAAGCCAAGGGCC
GCATACAGTATGACTGGAGTGACCGCAACCTCGACTACCCAGCCGCGGCCAGTACGAGAATTCAT
CAACCGGAACCTGGAGGCCAAAGAAGAGAGAATCAACAACTGCACACTGAAGGCGACCAGCTGCTGACA
GCCGAGCACCCGGGAGGAACTCCATTGAGGCACACATGGAGGCGGTGCACGCGGAGTGGAAAGGAGTACC
TGAACCTGCTCATCTGTGAGGAGAGCCACTGAAATACATGGAAGACTATCACCAATTTCAAAAGATAT
GAAGGATGCTCAGGAACCTGCTGCGCAAGGTGGACTCAGACTTGAACCAGAAAATACAGCCCTGACTTCAA
GACCGATATCAGATAGAGCTGTTGCTTCGGGAGCTGGATGACCAGGAGAAGGCTCTGGACAAGTATGAGG
ATGTGGTGCAGGGGCTGCAGAAGCGAGGGCAGCAAGTGTGCCACTCAAGTACCGCGTGTGAGACGCCACT
CAAGCCATCCCTGTGGAGGCCCTGTGACTTTGAGGGTGACCAGGGCCTAATCTCCGGGGCTACAGC
TACAGCTGCAGAAGAACAACGGGGAGAGCTGGGAGCTGACAGACAGCACTGGGAAGAAGCTGATGGCCC
CAGCTGTCTGCTTCATCATTCCCCCACCAGCCCGAGGCTTGGCTCTCTCGGACAGCCTGGGCAGCCA
GTACCGGAGTGTGCGGCAGAAGGCGCCGGGAGCAAACACGCGCTCCAGCAGCGGATGAGGTGCTAAGG
ACAGAGAACCCTGGAGATGCCTCCGATCTTACGGGGCAGCAGCTGCTGGCTGGCTTGGACCAAGTGGCCA
GTGACCTGGACCGGCAGGAGAAGGCTATCACGGGGATCTACGGCCACCCCTTGGCAGGGACGGGCAAT
AGAAGATAGTGTGAGCGGGCCAAGCACCTCAAGAACATTACCAATGAGCTGCTACAGATTGAGCCAGAG



AAGATACAGCGCACAGCTGAGTGTGAGGCCCTTCGTGCAGGCCCTCCCGGGCAGTGGCACCACACCCTTGC
TGAAGACCCGGGTGGAAGATACCAACCAGAAATATAAGCGACTGGTACAGCTGCTAGAAGCAGCCCAGGA
GAAGGTGGATGTTGCCAACCGCCTGGAGAACAGTCTGCAACGGGGCAGGGAGCTGCTGGCCTCCCACGAG
AACAGGCTGATGCAGGATGACACAATACCTGAAAGTGACTACATGTTGGACAGCAAGAGGGCAGGAGCTAG
AGGCCATGGCTTCTGAGCTGCAGGCCAGAAAGTCCCTCCTGGGTGAGGTGGAACAGAACCTGCAGGTGGC
CAAGCAGTGCTCCAGCTCACTGGCCAGCCGCTTCCAAGAGCACTGCCCTGACCTGGAGGCCCAGGAGGCTGC
GAGGTACACAAGCTCAACCAGCGTTTCAACAACCTCAATCAGCAGGTGGAACGCAGGGCCAGAGCCTGC
AGAGTGCCAGGGATGCCTACAGTGAATACTGCCGAGTTATGACCATGTGCTTTCAGTTCTTGGTCAAGAC
TCCAGTTATGAGCCCCAGGAGACAGACAGCCTCAGCCAGATGGAGACAAAACCTGAAAGAACCAGAAGAAC
TTGCTTGTAGATAGCAAGCATGGAACAAGGGGCGCAGAAGGTCTACGCAGACTCCCAACAGTACCAGC
AAGCAGTGAAGGACTATGAGCTTGAAGCAGAGAAGCTAAGGTCCCTGCTGGACTGGAGAACGGACGGAA
CAGCCATGTGAACAAGAGAGCCAGGCTGCAGTCTCCTGCTGCCAAAGTGAAGGAAGAGGAAGCTGCTCTT
GCTGCCAAGTTACAGAAGTTAATGCCATCAACAGACAGAGGCTACAAAATTTGGAGTTTGCAGTGAATC
TCTTGAGACAGCAACCAGAGGCAGGAGTGACCCATGAGACTCTGCAAGGGAGAGAGCAAGGCTCTGGCAT
GGAGAAAACATGGAAGATTGAGAAGAACTGGAGGAGGATGGAGCGAAGGCAACAGTTGAAAATGAG
GTCAAGAGTGCCAGGAAGAAATCCAGACCCCTGAAGGATCAGGGTCTCAGGAATCATTGGTGAGGAAGG
AGGTGCTGAAGAAGGTGCCAGACCCCTGCCCTGGAGGAGAGCTTCCAGCAGCTGCAGCAGACCCCTGGCTGA
GGAACAGCACAAGAACCAGCTGTTGCAGGAGGAGCTGGGAGCACTGCAGCTCCGGCTGCAGGCCCTAGAA
CAGGAGACCAGGGATGGGGGACAAGAGTATGTGGTCAAGGAGGTCTTGGCATTGAGCCAGACAGAGCCC
AGGAGGATGAGGTTTTACAGCTTCGGGAGGAGCTGGAGGGACTACGGCCGCAAAAGGTGCCCGAGAGGC
TGAGGTACTACTTTACAGCAGCGCGTAGCAGCCCTAGCTGCTGAGAAGAGCAGGGTACAGGAAAAGGTC
ACTGAGAGAGAGGTGGTAAAGCTACAGAATGACCCTCAGCTGGAGGCAGAATACCGGAGGCTACAGGAGG
AACACCAACGGGAAGGTACACTCAGGGAGAAGCAGGAAGAGGAGCTGAGTTTCTACAGCCCAAGTCAAG
GAGACTGGAGAAAAGAACGAGCCATGGCAGAAGGCAAGATCACTGTCAAAGAGGTGCTCAAAGTAGAGAAA
GATACAGCTGCAGAGAGGGAAGTCAATGACCTCAGCCGCCAGTATGAGGATGAGGCTTCCAGGCTCGCA
CTAGCCAGCGGGAGAAGACAGAGCTTCTCAGAAAGATATGGGCCCTGGAAGAAGAAAATGCCAAGGTGGT
GGTACAGGAGAAGGTCCGAGAGATTGTGCGGCCAGATCCCAAGGCAGAGAGTGAAGTGGCCAACCTCCGC
CTGGAGCTGGTGGAGCAGGAGCGCAAATTCAGAGGTGCTGAGGAGCAGCTGAAGAGCTACCAGAGTGAGC
TGGAGGCCCTACGGAACCGGGCCACAAGTGAAGTCAAAGAGGTGACCAAGAGGTGATTAAATACAC
AACTGACCAGAGACGGAGCAGGAACCTCAGCGACTCAGGGAGGAGATCATGGACAAGACCAGGTTAATA
GAAAGGTGTGACTTAGAGATTTATCAGCTGAAGCAGGAGATCCAATCCTGAAAGACACCAAGCCACAGG
TGACAGACTAGAGAGGTGGTCCAGGAGATCTGCAGTTCAGGAAGACCCCAAAACCAAGAAGGAGGTAGA
GTCTCTGCGTATACAGCTGTCAGAAGAAAAGAAGAACTGGTGGACCTGGAAGGGGAGCAGGCATCCAG
GAAGAGAAGATCAAACGCAAGGAGGAAGAGCTGGCCAGGGTAAGGAAAGGATTGTACGCCAGGAGGTGG
TACAGTATGAAGATGAGCCAGATTTGCGGGCTGAGGTGACTGCCTTACAGACAGCATTGATGTTGAGCT
GAGGCAGATTGATAAACTGTGTGTGGAGCTACGGCGGCTACAGCATCGCAGAGCAGAGCTGGAGAGGCAG
CTGGAGGAGCTGGAGCGTGAGAGGCAGGCACGTAGGGCAGCTGAGCTGGAGGTGCAGAGGCTGCAACAGC
GGCTGGCTGCACTGGAGCAAGAGGAGGCCAAGACTGGTGAAGTGAACCCACACAAAAGGTGGTGGTCT
GCAGCAGGACCCACAGCAAACCCAGGGAACATGCCCTGCTCCGAGCCAGCTGGAGGAAGAGCGCACCCGG
AGGCAGCTACTGGAGGGTGAGCTTGGAGCCCTGCGTAGAAAAGTTGGCTGCCCTGGAGAAGACAGAGATCA
AAGAAAAGGTGGTCTTCTCCGAGAGTGTCCAGGTAGAAAAGGTTGACACTGAGCAAGAGATCCAGCGGCT
CAAGAAGAGCCTGGAAGAGGAGAGCCGGAGCAAGAGGGAGCTAGATTGAGAGGTGACCCGGCTGGAAGCC
AAGTTATCTGAGCTAGAATTCTACAATTCAGTCAATCAAGGAACTGGATTTCTGAGAGAAGAAAACC
ACAAGCTACAGCTAGAGCGGCAAAACCTGCAGCTAGAGACCCGGAGACTCCAATCAGAGATTGAGATGGC
CGCAACAGAAAACCTGAGATCTGAAGAACATAACCATGGTAGACTCTGGAACCCACCTAAACTCTAGGCTG
TGGTCCCTAGAGAAGGAACTGGATGACCTCAAGAAGATGTCCAAGGACAAGGATCTGGAGATCGATGAAC
TGCAGAGGCGTCTGGGCTCTGTAGCCGTCAAGAGGGAGCAGAGGGAGAACCACCTGAGGGCTCCATAGT
GGTCATTGACCCTGACACAGGTCGTGAGCTGTCCCAGAGGAGGCCACCGGGCTGGGCTCATCGACTGG
AAAATGTTCTGTAAGCTCAGAAGCCAGGAGTGTGACTGGGAAGAGATATCAGTGAAGGTCTAATGGGG
AGTCATCAGTAATCCATGACAGGAAGTCTGGCAAGAAGTTTTCCATTGAGGATGCTCTGCAGAGTGGCAG
GCTAACCCCTGCTCAATATGACCCTATGTCAACAAGGATATGTCCATTCAGGAGCTGGCAGTCTTGGTG
TCTGGGCAGAAG

ACGCGTACGCGGCCGCTCGAGCAGAACTCATCTCAGAAGAGGATCTGGCAGCAATGATATCCTGGATT
ACAAGGATGACGACGATAAGGTTTAA

Protein Sequence:

>RR213102 representing NM_001106976

Red=Cloning site Green=Tags(s)

MHSLFRKKNKGKYSPTVQTRSISNKLSDLIEQLQKNADQVERNIVDTEAKMQSDLARMQDQGLPEHRDA
TLQNVSDSEKLLYVLEADSAIAKHMHPQGDMAIEDIRQLKERVNLRGKHKQMYSLAVREADPKVNWDA
LVDEKLDKLSQSFQGTDLPLVDSQVEQHNI FHNVEVKAIGPHLAKDKEQNSLQAKYQKLLAASQARQQHL
SSLQDYMQRCTNELYWLQQAQGRIQYDWSRNLDPYRRLQYENFINRNLEAKEERINKLHTEGDQLLT
AEHPGRNSIEAHMEAVHAEWKEYLNLLICEESHLYMEDYHQFHDKMDAQELLRKVDSLDLQKYSYDFK
DRYQIEI LLLRELDQEKALDKYEDVVRGLQKRGQVPLPKYRRETPPKIPVEALCDFEGDQGLISRGYS
YTLQKNNGESWELTDSTGKKLMAVAVCFIIPPTDPEALALSDSLGSQYRSVRQKAAGSKHALQQRHEVLR
TENPGDASDLQGRQLLAGLDQVASDLDRQEKAITGILRPPLEQGRAIEDSAERAKHLKNI TNELLQIEPE
KIQRTAECFAFVQALPGSGTTPLLKTRVEDTNQKYKRLVQLLEAAQEKVDVANRLENSLQRGRELLASHE
NRLMQDDTIPESDYMLDSKRQLEAMASELQAQKSLLEGEVQNLQVAKQCSSSLASRFQEHCPDLERQEA
EVHKLNRFNLNQVVERRASLQSARDAYSEYCRGYDHLVQLVKTPSYEPQETDLSQMETKLNQKN
LLDEIASMEQGAQKVVYADSQQYQAVKDYELAEKLRSLDL ENGRNSHVNRARLQSPA AKVKEEEAAL
AAKFTEVNAINRQRLQNL E FALNLLRQQPEAGVTHETLQGREQSGMEETWKIQKELEEMERRQLENE
VKSAQEEIQTLKDGQPQESLVRKEV LKKVPDPALEESFQQLQQT LAEEQHKNQLLQEELGALQLRLQALE
QETRDGGQEYVVKVLRIEPDRAQEDEV LQLRELEGLRRQKGAREAEVLLLQQRVAALAAEKSRVQEKV
TEREVVKLQNDPQLEAEYRRLQEEHQREGTLREKQEEEL SFLQAKLRRLEKERAMAEGLITVKEV LKVEK
DTAAEREVNDLSRQYED EASKARTSQREKTELLRKI WALEEENAKVVVQEKVREI VRPDPKAESEVANLR
LELVEQERKFRGAEELKSYQSELEALRNRGPQVEVKEVTKVEIKYTTDPETEQLQLRREEIMDKTRLI
ERCDEIYQLKQEIQILKDTKPVQVQTRREVVEILQFQEDPQTKKEVESLRIQLSEEKKLVDLEGEQASQ
EEKIKRKEEELAQGKERIVRQEVVQYEDEPDLRAEVTAF TDSIDVELRQIDKLCVELRRLQHRRAELERQ
LEELERERQARRAAELEVQRLQQLAALEQEEAKTGKVTHTQKVV LQQDPQQTREHALLRAQLEEEERHR
RQLLEGELEPLRRKLAAL E KTEIKEKVV FSESVQVEKGDTEQEIQRLKKSLEESRSKRELDSEVTRLEA
KLSELEFYNSKSSKELDFLREENHKLQLERQNLQLETRRLQSEIEMAATETRD LKNITMVD SGTHLNSRL
WSLEKELDDLKMSKDKDLEIDELQRRLGSVAVKREQRENHLRRSIVVIDPDTGREL S PEEAHRAGLIDW
KMFVKLSQECDWEEISVKGPNGESSVIHDRKSGKKFSIEDALQSGRLTPAQYDRYV NKMDSIQELAVLV
SGQK

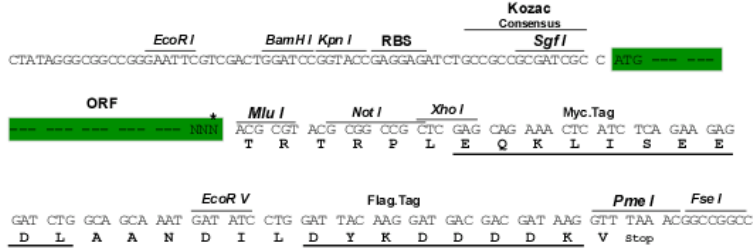
TRTRPLEQKLI SEEDLAANDILDYKDDDDKV

Restriction Sites:

Sgfl-MluI

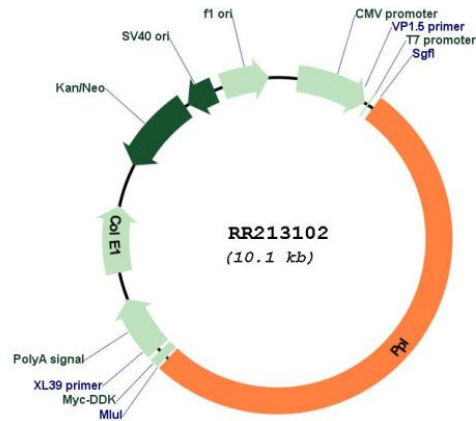
Cloning Scheme:

Cloning sites used for ORF Shutting:



* The last codon before the Stop codon of the ORF

Plasmid Map:



ACCN: NM_001106976

ORF Size: 5262 bp

OTI Disclaimer: The molecular sequence of this clone aligns with the gene accession number as a point of reference only. However, individual transcript sequences of the same gene can differ through naturally occurring variations (e.g. polymorphisms), each with its own valid existence. This clone is substantially in agreement with the reference, but a complete review of all prevailing variants is recommended prior to use. [More info](#)

OTI Annotation: This clone was engineered to express the complete ORF with an expression tag. Expression varies depending on the nature of the gene.

Components: The ORF clone is ion-exchange column purified and shipped in a 2D barcoded Matrix tube containing 10ug of transfection-ready, dried plasmid DNA (reconstitute with 100 ul of water).

Reconstitution Method:

1. Centrifuge at 5,000xg for 5min.
2. Carefully open the tube and add 100ul of sterile water to dissolve the DNA.
3. Close the tube and incubate for 10 minutes at room temperature.
4. Briefly vortex the tube and then do a quick spin (less than 5000xg) to concentrate the liquid at the bottom.
5. Store the suspended plasmid at -20°C. The DNA is stable for at least one year from date of shipping when stored at -20°C.

RefSeq: [NM_001106976.1](#), [NP_001100446.1](#)

RefSeq Size: 6281 bp

RefSeq ORF: 5265 bp

Locus ID: 302934

Cytogenetics: 10q12

MW: 204.1 kDa