

## Product datasheet for **RR213095**

### Prickle2 (NM\_001107876) Rat Tagged ORF Clone

#### Product data:

Product Type:	Expression Plasmids
Product Name:	Prickle2 (NM_001107876) Rat Tagged ORF Clone
Tag:	Myc-DDK
Symbol:	Prickle2
Vector:	pCMV6-Entry (PS100001)
E. coli Selection:	Kanamycin (25 ug/mL)
Cell Selection:	Neomycin



[View online »](#)

ORF Nucleotide  
Sequence:

>RR213095 representing NM\_001107876  
Red=Cloning site Blue=ORF Green=Tags(s)

TTTTGTAATACGACTCACTATAGGGCGGCCGGGAATTCGTGACTGGATCCGGTACCGAGGAGATCTGCC  
GCC**CGCATCGCC**

ATGGTGACAGTGTGCCGCTGGAGATGGAGAAGACCATTAGCAAGCTCATGTTTGACTTCCAGAGGAATT  
CAACCTCAGATGACGACTCGGGCTGTGCTTTGGAAGAATATGCCTGGGTCCCCCGGGCTGAAGCCTGA  
GCAGGTGCACCAGTATTATAGCTGCCTCCAGAAAGAGAAAAGTTCCCTATGTCAACAGCCCTGGAGAGAAA  
TTGCGAATCAAGCAGCTACTGCACCAGCTGCCACCCACGACAATGAGGTTTCGGTATTGCAACTCCCTGG  
ACGAGGAGGAGAAGCGGGAGCTGAAGCTGTTTCAGCAACCAGAGGAAACGTGAGAACCTGGGCCGAGGCAA  
TGTCAGGCCCTTCCCGTCACCATGACAGGGGCTATTTGCGAACAGTGTGGAGGTGAGATTAAGGGCGGC  
GACATCGTGTGTTGCATCACGTGCTGGCCATGGCATCTGCTGGCATCCACCATGCTTTATATGCACAG  
TCTGCAATGAGCTTCTGGTTGACCTGATCTACTTTACCAAGATGGGAAGATCTACTGTGCAGGCCACCA  
TGCTGAGTGCCTGAAGCCGCGCTGTGCAGCCTGTGATGAGATCATCTTTCAGATGAGTGCACAGAGGCT  
GAAGGACGACATTGGCACATGAGACACTTCTGCTGCTTCGAGTGTGAGACGGTGTGGGGGGCCAGCGCT  
ACATCATGAAGGAGGGAAGACCCTACTGCTGCTACTGCTTTGAGTCCCTGTATGCAGAATATTGTGACAC  
CTGTGCCAACATATAGGAATTGACCAAGGTCAAATGACCTATGACGGCCAACTGGCATGCTACGGAG  
AACTGTTTCTGCTGTGCTCATTGTAAGAAGTCTCTCCTGGGGCGGCCATTCTCCGAAGCAAGGCCAGA  
TATTCTGCTCACGGGCTGTAGTGTGGGGAGGACCCCAATGGCTCTGACTCATCTGATTACGCCTTCCA  
GAATGCCAGAGCAAGGAGTCTCGCCGAGTGCACAAAATGGCAAGAACAAGGGCAAAACAGAGGAAACC  
ATGCTGAACCAGCACAGCCAGCTGCAGGTGAGTTCTAACCGGCTCTCAGCTGATGTGGACCCCTGTGAG  
TGCAGATGGATCTCCTCAGCCTGTCCAGCCAGAGCCAGCCTCAACCGGGACCCCATTTGGAGGACCCG  
GGATGAGCCCTTCCATTACGGGAACAAGATGGAGCAGAACAATCCAGAGTCTTTGCAGCTCCTCAGC  
CAGTGCAACATCAGAACGTCCTACAGTCCAGGAGGCGAGCAGCAGGAGCCAGCCTGACATGTGGGCCA  
AGCACTTCAGCAACCCCAAGAGAAGCTCATCAATGGCCCTGAAGGGGCACGGTGGCAGTTTTATCCAGGA  
ATGTCGTGAGGACTATTACCCAGGGAGGCTGATGTCCCAGGAGAGCTACAGCGATATGTCTAGCCAAAGC  
TTTAGTGAACCCGAGGCAGCATCCCGTTCCCAAGTATGAGGAGGAGGAGGAGGAGGAGGAAGAAG  
GTGGCATATCTACCCAGCAGTCCCGGCCCGGCTCCACTCAGCTCCCTGAAATACACAGAGGACATGAC  
ACCCACAGAACAGACTCCTCGTGGCTCTATGGAATCACTGGCCCTGTCAAATGCAACAGGCCTGTCTGCT  
GAAGGTGGTGCCAAGCGCCAGGAGCACCTATCCCGTTTTCCATGCTGACCTCAGCAAAGACTCTGGAA  
TGAATGTCTCGGAAAAGCTGAGCAACATGGGCACTCTCAACTCCTCAATGCAATTCAGGAGCGCAGAGTC  
TGTCCGACGCTACTGTCTGCGCAACAGTACCAGGAGATGGAGGGAAACCTTACCAGCTCAGCAACCCC  
CTGGGGTACAGGGACCTACAGTCCCATGGAAGGATGCACCAGAGCTTTGATTTTGATGGCGGCATAGCGA  
GCAGCAAGCTACCAGGGCAGGAAGGTGTTACATCCAGCCATGAGTGAAGCGCACCCGGAGGAGAAGTAC  
TTCCAGGGATGACAACCGCCGCTTCCGCCCTACCGGTCCAGGAGGTCCCGACGCTCACGTTTACAGCAAC  
GCCCTGCACCTAGCCAGCGAGCGGGAAGTATCGCTCGGTTGAAGGATAGGCCCCCTCTGAGAGCCAGGG  
AGGACTATGACCAGTTCTGTGCGCAACGCGATTTTCAGGAGAGCATGGGGCAGGGTCCCGGCGGGATCT  
GTACAGCCAGTGTCCAGGACTGTGTGAGACCTGGCTTTGCAGAATGCCTTTGGGGAACGATGGGGACCC  
TACTTACGAGATGATTGGTGTCCACCTGCTCCTCCTCTTTCAGAGTCCGACAATGAGGGCTACTTCC  
TAGGAGAACCATCCCCAGCCAGCCCGCTACGATATGTCACAAGTGTGAGCTCCTGCACAAGTACAG  
CTTTACGGTGTCCCAATCCTCCACCTTAGGTGGCAGAGGACAGTTGCACAGCAGGAAAAGACAGAAG  
AGCAAAAAGTGTATCATTTTCG

**ACGCGT**ACGCGGCCGCTCGAGCAGAAACTCATCTCAGAAGAGGATCTGGCAGCAAATGATATCCTGGATT  
ACAAGGATGACGACGATAAGGTTTAA

**Protein Sequence:** >RR213095 representing NM\_001107876  
Red=Cloning site Green=Tags(s)

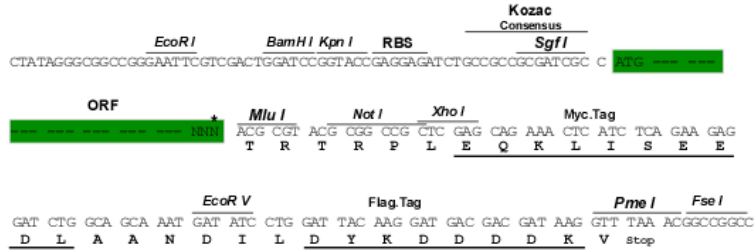
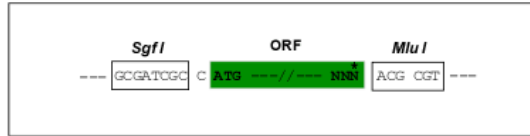
MVTVMPLMEKTI SKLMFDFQRNSTSDDDSGCALEEYAWVPPGLKPEQVHQYYSCLP EEKVPYVNSPGEK  
LRIKQLLHQLPPHDNEVRYCNSLDEEEKRELKLF SNQRKRENLGRGNVRPFPVTMTGAICEQCGGQIKGG  
DIAVFASRAGHGICWHPPCFICTVCNELLVDLIYFYQDGKIYCGRHHAELKPRCAACDEIIFADECTEA  
EGRHWHMRHFCCFECETVLGGQRYIMKEGRPYCCHCFESLYAEYCDTCAQHIGIDQGQMTYDQGHWHATE  
NCFCCAHCCKSLLGRPFLPKQGQIFCSRACSAGEDPNGSDSDSAFQNAKAKESRRSAKIGKNKGKTEET  
MLNQHSQLQVSSNRLSADVDP LSVQMDLLSLSSQTPSLNRDPIWRSRDEPFHYGNKMEQNQSQSPLQLLS  
QCNIRTSYSPGGQAAGAQPDMWAKHFSNPKRSSSMALKGHGGSFIQE CREDYYPGR LMSQESYSMDSSQS  
FSETRGSIPVPKYEEEEEEEEEGGISTQQCRPRRPLSSLKYTEDMTPT EQTPRGSMESLALSNATGLSA  
EGGAKRQEHL SRF SMPDLSKDSGMNVSEKLSNMGT LNSSMQFRSAESVRSLLSAQQYQEMEGNLHQLSNP  
LGYRDLQSHGRMHQSFD FDGGIASSKLPQEGVHIQPM SERTRRRTTSRDDNRRFRPHRSRRSRRSRSDN  
ALHLASEREVIARLKD RPPLRAREDYDQFVRQRSFQESMGQGSRRDLYSQCPRTVSDLALQNAFGERWGP  
YFTEYDWCSTCSSSES DNEGYFLGEP IQPARLRYVTSDELLHKYSSYGVPKSS TLGGRGQLHSRKRQK  
SKNCIIS

TRTRPLEQKLISEEDLAANDILDYKDDDDKV

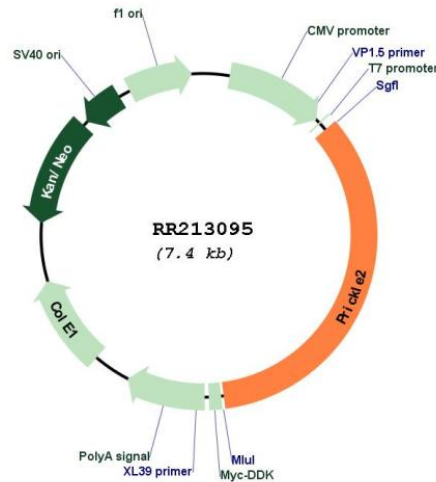
**Restriction Sites:** Sgfl-Mlul

Cloning Scheme:

Cloning sites used for ORF Shuttling:



\* The last codon before the Stop codon of the ORF

**Plasmid Map:**


**ACCN:** NM\_001107876

**ORF Size:** 2541 bp

**OTI Disclaimer:** The molecular sequence of this clone aligns with the gene accession number as a point of reference only. However, individual transcript sequences of the same gene can differ through naturally occurring variations (e.g. polymorphisms), each with its own valid existence. This clone is substantially in agreement with the reference, but a complete review of all prevailing variants is recommended prior to use. [More info](#)

**OTI Annotation:** This clone was engineered to express the complete ORF with an expression tag. Expression varies depending on the nature of the gene.

**Components:** The ORF clone is ion-exchange column purified and shipped in a 2D barcoded Matrix tube containing 10ug of transfection-ready, dried plasmid DNA (reconstitute with 100 ul of water).

**Reconstitution Method:**

1. Centrifuge at 5,000xg for 5min.
2. Carefully open the tube and add 100ul of sterile water to dissolve the DNA.
3. Close the tube and incubate for 10 minutes at room temperature.
4. Briefly vortex the tube and then do a quick spin (less than 5000xg) to concentrate the liquid at the bottom.
5. Store the suspended plasmid at -20°C. The DNA is stable for at least one year from date of shipping when stored at -20°C.

**RefSeq:** [NM\\_001107876.1](#), [NP\\_001101346.1](#)

**RefSeq Size:** 7759 bp

**RefSeq ORF:** 2544 bp

**Locus ID:** 312563

**Cytogenetics:** 4q34

**MW:** 96.1 kDa