

Product datasheet for **RR213057**

Gnb2 (NM_031037) Rat Tagged ORF Clone

Product data:

Product Type:	Expression Plasmids
Product Name:	Gnb2 (NM_031037) Rat Tagged ORF Clone
Tag:	Myc-DDK
Symbol:	Gnb2
Mammalian Cell Selection:	Neomycin
Vector:	pCMV6-Entry (PS100001)
E. coli Selection:	Kanamycin (25 ug/mL)
ORF Nucleotide Sequence:	>RR213057 ORF sequence Red=Cloning site Blue=ORF Green=Tags(s)

TTTTGTAATACGACTCACTATAGGGCGGCCGGAATTCGTCGACTGGATCCGGTACCGAGGAGATCTGCC
GCC**CGATCGCC**

ATGAGTGAGCTGGAGCAACTGAGACAGGAGGCTGAGCAGCTCCGGAACCAGATCCGGGACGCCAGAAAAG
CATGCGGGGATCCACACTGACCCAGATCACAGCTGGGCTGGACCCAGTGGGGCGAATTCAGATGAGAAC
ACGGAGGACCCCTCCGTGGACACCTGGCAAAAATCTATGCCATGCACTGGGGGACAGACTCAAGGCTGCTG
GTCAGCGCCTCCAGGACGGAAAGCTCATCATTTGGGACAGCTACACCACTAACAAAGTCCACGCCATCC
CTCTGCGCTCCTCTGGGTCATGACCTGTGCCTACGCCCTCGGGGAACCTCGTGGCCTGTGGGGTTT
GGACAACATCTGCTCCATCTATAGTCTCAAGACCCGAGAGGGCAATGTCAGGGTACGAGAGAGCTGCCT
GGCCATACTGGGTACCTCTCCTGCTGCCGCTTCCTGGACGACAACCAATCATCACCAGCTCTGGGGACA
CCACCTGTGCCCTGTGGGACATTGAGACAGGCCAGCAGACAGTGGGATTTGCTGGACACAGTGGGATGT
GATGTCCCTGTCCCTGGCCCCGATGGCCGCACCTTTGTGTCAGGTGCCTGCGATGCCTCCATCAAGCTG
TGGGATGTTGGGATTCCATGTGCCGACAGACATTCATAGGTACGAATCGGACATCAATGCTGTGGCTT
TCTTCCCCAATGGTTATGCCTTACCACGGGATCAGATGATGCCACATGTCGCTGTTTGACCTGCGGGC
TGATCAGGAGCTGCTCATGTATCCACGACAACATCATCTGCGGCATCACCTCGGTTGCCTTCTCACGC
AGCGGCCGGCTGCTGCTCGCTGGCTATGACGACTCAACTGCAACATCTGGGATGCCATGAAGGGTGACC
GTGCAGGTGTCCCTGCTGCCATGATAACCGTGTGAGCTGCCTTGGGGTACAGATGATGGGATGGCTGT
GGCTACAGGCTCCTGGACTCCTTCTCAAGATCTGGAAC

ACGCGTACGCGGCCGCTCGAGCAGAACTCATCTCAGAAGAGGATCTGGCAGCAAATGATATCCTGGATT
ACAAGGATGACGACGATAAGGTTTAA



[View online »](#)

Protein Sequence: >RR213057 protein sequence
 Red=Cloning site Green=Tags(s)

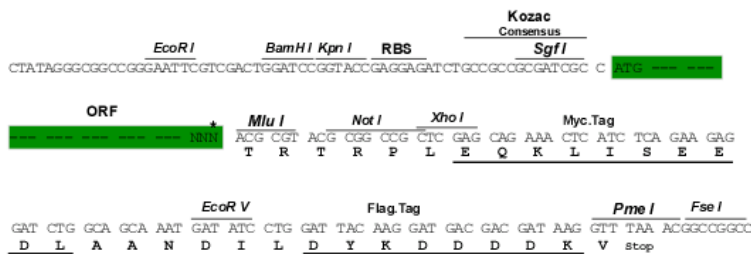
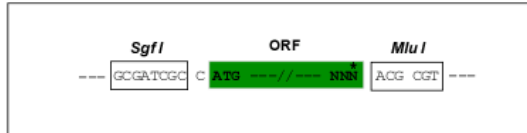
MSELEQLRQAEQLRNQIRDARKACGDSTLTQITAGLDPVGRIQMRTRRTLGRHLAKIYAMHWGTD S RLL
 VSASQDGKLI IWDSYTTNKVHAIPLRSSWVMTCA YAPSGNFVACGGLDNICSIYSLKTR EGNVRSRELP
 GHTGYLSCCRFLDDNQIITSSGDTT CALWDIETGQQT VGFAGHSGDVMSLSLAPDGRTFVSGACDASI KL
 WDVRDSMCRQTFIGHESDINAVAFPPNGYAFTTGSDDATCRLFDLRADQELLMYSHDNIICGITSVAFSR
 SGRLLLAGYDDFNCNIWDAMKGD RAGVLAGHDNRV SCLGVTDDGMAVATGSWDSFLKIWN

TRTRPLEQKLISEEDLAANDILDYKDDDDKV

Restriction Sites: SgfI-MluI

Cloning Scheme:

Cloning sites used for ORF Shuttling:



* The last codon before the Stop codon of the ORF

ACCN: NM_031037

ORF Size: 1020 bp

OTI Disclaimer: The molecular sequence of this clone aligns with the gene accession number as a point of reference only. However, individual transcript sequences of the same gene can differ through naturally occurring variations (e.g. polymorphisms), each with its own valid existence. This clone is substantially in agreement with the reference, but a complete review of all prevailing variants is recommended prior to use. [More info](#)

OTI Annotation: This clone was engineered to express the complete ORF with an expression tag. Expression varies depending on the nature of the gene.

Components: The ORF clone is ion-exchange column purified and shipped in a 2D barcoded Matrix tube containing 10ug of transfection-ready, dried plasmid DNA (reconstitute with 100 ul of water).

Reconstitution Method:

1. Centrifuge at 5,000xg for 5min.
2. Carefully open the tube and add 100ul of sterile water to dissolve the DNA.
3. Close the tube and incubate for 10 minutes at room temperature.
4. Briefly vortex the tube and then do a quick spin (less than 5000xg) to concentrate the liquid at the bottom.
5. Store the suspended plasmid at -20°C. The DNA is stable for at least one year from date of shipping when stored at -20°C.

RefSeq: [NM_031037.2](#), [NP_112299.1](#)

RefSeq Size: 1670 bp

RefSeq ORF: 1023 bp

Locus ID: 81667

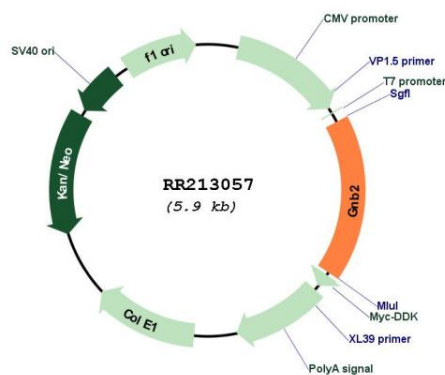
UniProt ID: [P54313](#)

Cytogenetics: 12q12

MW: 37.3 kDa

Gene Summary: modulates calcium channel activity [RGD, Feb 2006]

Product images:



Circular map for RR213057