

Product datasheet for **RR213024**

Csnk1a1 (NM_053615) Rat Tagged ORF Clone

Product data:

Product Type:	Expression Plasmids
Product Name:	Csnk1a1 (NM_053615) Rat Tagged ORF Clone
Tag:	Myc-DDK
Symbol:	Csnk1a1
Synonyms:	MGC156603
Mammalian Cell Selection:	Neomycin
Vector:	pCMV6-Entry (PS100001)
E. coli Selection:	Kanamycin (25 ug/mL)
ORF Nucleotide Sequence:	>RR213024 ORF sequence Red=Cloning site Blue=ORF Green=Tags(s)

TTTTGTAATACGACTCACTATAGGGCGGCCGGAATTCGTCGACTGGATCCGGTACCGAGGAGATCTGCC
GCC**CGATCGCC**

ATGGCGAGCAGCAGCGGCTCCAAGGCCGAATTTATCGTCGGTGGGAAATACAAACTGGTGCGGAAGATCG
GATCTGGTTCCTTCGGGGACATTTATCTAGCGATCAACATACCAATGGCGAGGAAGTGGCAGTGAACT
AGAATCCCAGAAGGCCAGGCATCCCAGTTGCTGTACGAGAGCAAAGTATAAGATTCTCAAGGTGGG
GTTGGCATCCCTCACATACGGTGGTATGGCAAGGAAAAGACTATAATGTGCTAGTCATGGATCTTCTGG
GACCCAGCCTCGAAGACCTTTCAATTTCTGTTCAAGAAGTTCACTATGAAGACTGTACTTATGTTAGC
TGACCAGATGATCAGTAGAATTGAATATGTGCATACAAAGAATTTATACACAGAGACATTAACCAGAT
AACTTCCTAATGGGTATTGGGCGTCACTGTAATAAGTTATTCCTTATTGATTTTGGTTTGGCCAAAAAGT
ACAGAGACAACAGGACAAGGCAACACATACCATACAGGGAAGATAAAAACCTCACTGGCACTGCCGGTA
TGCCAGCATCAATGCACATCTTGGCATTGAGCAGAGTCGCCGAGATGACATGGAATCTTTAGGATATGTT
TTGATGTATTTAATAGAACCAGTCTGCCATGGCAAGGGCTAAAGGCTGCAACAAAGAAACAAAAATATG
AAAAGATTAGTAAAAGAAGATGTCCACTCCTGTTGAAGTTTTGTGAAGGGTTTCTGCAGAATTTGC
CATGTACTTAAATTAAGTCTGCTGGGCTGCGCTTTGAGGAAGCTCCGGATTACATGTATCTGAGGCAGCTG
TTCCGCATCCTTTCAGGACCTGAACCACAGTATGACTACACGTTTGATTGGACGATGTTAAAGCAGA
AAGCAGCCAGCAGGCAGCCTCTCCAGTGGCAGGGTCAGCAGGCCAAACCCACAGGTTTC

ACGCGTACGCGGCCGCTCGAGCAGAACTCATCTCAGAAGAGGATCTGGCAGCAATGATATCCTGGATT
ACAAGGATGACGACGATAAGGTTTAA



[View online »](#)

Protein Sequence: >RR213024 protein sequence
 Red=Cloning site Green=Tags(s)

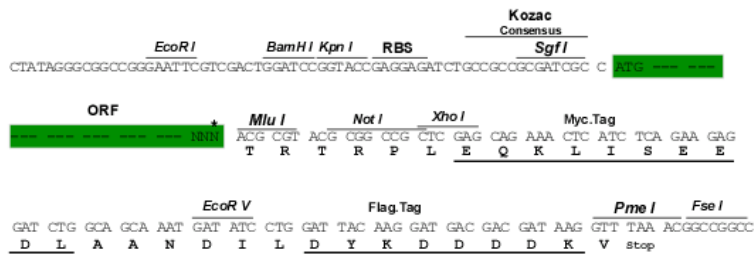
MASSSGSKAEFIVGGKYKLVKIGSGSFGDIYLAINITNGEEVAVKLESQKARHPQLLYESKLYKILQGG
 VGIPHIRWYGQGDYINVLVMDLLGPSLEDLNFCSRFTMKTVLMADQMISRIEYVHTKNFIHRDIKPD
 NFLMGIGRHCKNLFLIDFGLAKKYRDNRTRQHIPPYREDKNLTGTARYASINAHLGIEQSRRDDMESLGYV
 LMYFNRTSLPWQGLKAATKKQKYEKISEKKMSTPVEVLCKGFPAEFAMYLNYCRGLRFEEAPDYMYLRQL
 FRILFRTLNHQYDYTFDWTMLKQKAAQQAASSSGQGQQAQTPTGF

TRTRPLEQKLISEEDLAANDILDYKDDDDKV

Restriction Sites: SgfI-MluI

Cloning Scheme:

Cloning sites used for ORF Shuttling:



* The last codon before the Stop codon of the ORF

ACCN: NM_053615

ORF Size: 975 bp

OTI Disclaimer: The molecular sequence of this clone aligns with the gene accession number as a point of reference only. However, individual transcript sequences of the same gene can differ through naturally occurring variations (e.g. polymorphisms), each with its own valid existence. This clone is substantially in agreement with the reference, but a complete review of all prevailing variants is recommended prior to use. [More info](#)

OTI Annotation: This clone was engineered to express the complete ORF with an expression tag. Expression varies depending on the nature of the gene.

Components: The ORF clone is ion-exchange column purified and shipped in a 2D barcoded Matrix tube containing 10ug of transfection-ready, dried plasmid DNA (reconstitute with 100 ul of water).

Reconstitution Method:

1. Centrifuge at 5,000xg for 5min.
2. Carefully open the tube and add 100ul of sterile water to dissolve the DNA.
3. Close the tube and incubate for 10 minutes at room temperature.
4. Briefly vortex the tube and then do a quick spin (less than 5000xg) to concentrate the liquid at the bottom.
5. Store the suspended plasmid at -20°C. The DNA is stable for at least one year from date of shipping when stored at -20°C.

RefSeq: [NM_053615.1](#), [NP_446067.1](#)

RefSeq Size: 978 bp

RefSeq ORF: 978 bp

Locus ID: 113927

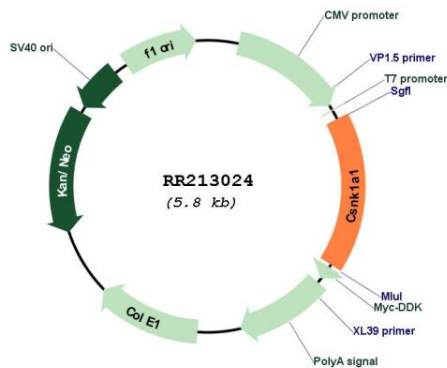
UniProt ID: [P97633](#)

Cytogenetics: 18q12.1

MW: 37.5 kDa

Gene Summary: splice variant isoforms CKI alpha and CKI alpha L both have casein kinase I activity but display differences in substrate kinetics [RGD, Feb 2006]

Product images:



Circular map for RR213024