

## Product datasheet for **RR212852**

### **Daxx (NM\_080891) Rat Tagged ORF Clone**

#### **Product data:**

Product Type:	Expression Plasmids
Product Name:	Daxx (NM_080891) Rat Tagged ORF Clone
Tag:	Myc-DDK
Symbol:	Daxx
Synonyms:	MGC156601
Mammalian Cell Selection:	Neomycin
Vector:	pCMV6-Entry (PS100001)
E. coli Selection:	Kanamycin (25 ug/mL)



[View online »](#)

ORF Nucleotide  
Sequence:

>RR212852 representing NM\_080891  
 Red=Cloning site Blue=ORF Green=Tags(s)

TTTTGTAATACGACTCACTATAGGGCGGCCGGGAATTCGTCGACTGGATCCGGTACCGAGGAGATCTGCC  
 GCC**CGCATCGCC**

ATGGCCACCGATGACAGCATCATTGTGCTTGACGATGATGATGAAGATGAAGCAGCTGCTCAGCCAGGAC  
 CCTCCAACCCAGCCTCTAATCCTGTCTCACCAGGACCAGAAGCCTCTGGTCCCTCTGAGTCCCATGGGGA  
 TGGAGGGAGCAGTAACTCAGGTAGCAGGAAGTGCTACAAGTTGGAGAATGAGAAGCTGTTTGAAGAGTTC  
 CTTGAACTGTGTAAGATGCAGACATCGGACCACCCTGAGGTGGTCCGTTCTCCACAACTGCAGCAGC  
 GTGCTCAGTCCGCTTTTCTGGCCTCTGCAGAGTTCGCAACATCCTCTCCAGGGTCTGTCTCGGTCTCG  
 GAACCGGCCAGCGAAGCTCTACGTCTACATTAACGAGCTCTGCACTGTCTTAAAGCTCATTCCATCAAG  
 AAGAAGTTGAACTTAGCTCCCGCAGCCTCAGCGGAATCATCGGGTGATAACCCTCCACAGATCCCCCGT  
 CTGACCTTACAAACACCGAAACCACTGCCTCTGAGGCCTCAAGGACTCGAGGCTCCCGGAGGCAGATCCA  
 GCGCTTGGAGCAGCTGCTGGCACTGTATGTCGCAGAGATACAGCGGCTGCAGGAAAAGGAGTTGGATCTG  
 TCAGAAGTGGATGATCCCGACTCCTCTATTGTCAGGAGGCCGCTTGAAGCGGAAAAGTATCCGCCTCT  
 TTGGGCGGCTGTGCGAGTTGAAGGACTGCTTCTCTGACTGGGAGGGTCATAGAGCAGCGAATTCCTTA  
 CCGAGGCACTCGATACCCAGAGGTCAACAGGCGCATCGAGCGGCTCATCAACAAGCCGGGCGCTGACACG  
 TTTCCGGACTATGGAGATGTGCTGAGAGCGGTGGAGAAGCGGCGACCCGGCACAGTCTGGGCTTCCCA  
 GACAGCAGCTTCACTCTGGCTCAGGATGCCTTCCGGGATGTGGGTGTGAGGTTACAGGAGCGCCGCCA  
 CCTGGATCTCATCTATAACTTTGGCTGCCACCTCACAGATGACTATAGGCCAGGCGTTGACCCCGCACTC  
 ACCGATCCACATTGGCTCGCCGCTTCGGGAGAATCGAACCTTGCCATGAGCCGGCTGGATGAGGTCA  
 TCTCCAAGTATGCCATGATGCAAGACAAGAGTGAGGAGGGGAGAGACAGAAGAGACGGGCCCGCTCTT  
 AGCCACTTCCCAATCTTCAGACCTCCCCAAAGCCTCCTCGGATTCGGGTGAGGGTCTAGTGGAGTGGCA  
 TCCAGGAGGACCTACTACCCCAAGGCTGAGACCGAGGATGAGGAAGACGATGAGGAAAAGTATGATGATG  
 AAGAGGAGGAAGAGGAAGAGGAGGAGGAGGCCACCGAAGATGAAGATGAGGATTTAGAACAGTTGCA  
 GGAGGATCAGGATGATGAAGAGGAGGAGGAAGGAGATAATGAAGACGATAAAAAGTCCACATCCCCTTCG  
 CCCATTTCCGCAGAAGGAACTCAGCACCCACAGAAGGGCTCAGGTCCCGGAGGAGCAGCAGGAGAGAG  
 GACTGACGGGGACGCCAGCATCCCCGCTGGAAGCATCCCCGGCCTTCCCAGCACCGATGCTGAAAGCAG  
 CGCGGAGCAGCTCCAGGAGCGGCTCCTGGCAGGAGAGAGTCCCGTGTCCAGCTTCTGAGCTAGACATG  
 GAAGCTCTGCCTGAGGAGACCATCCCTTCCCTGAGGAAAAGGGCATTCTCTTCCAGGAGAAAAGTCAG  
 ACAGTTCCCTCCCACCATCTTGAAAAATGGGGCAGCTATGGTTACCTCTACGTCTTCAATGGGCGTGT  
 CTCTTCTACCCCTGTGCGAGATGCCAGTCCCCAAGCAAGAGATTTCCGGAAGGAAAAGAAGCAACTGGGA  
 CCTGGGCGGTTAGAAAACAGCTATGAAAAAAGCAGACGATGGCACAGCAGGACAGTGGGTGGAAGATAA  
 GTGTCTGTCTACTCCGCTCCTCCCTTGGCCTCTGTGGTCTCTGTTGCTGATTCTCCACGAGGGTGG  
 CTCTCCAGCCATGAGCTGGTAACCAGCTCCCTGTGCAACCCTTCTCCATCCCTGATACTCCAGACTCCC  
 CAGTCTCAGTCTCCCGGCTTGTATTTATAAGACGAGTGTGGCCACCCAGTGGCATCCCGAGGAGATCA  
 TCGTGCTCTCAGACTCTGAT

**ACGCGT**ACGCGGCCGCTCGAGCAGAACTCATCTCAGAAGAGGATCTGGCAGCAAATGATATCCTGGATT  
 ACAAGGATGACGACGATAAGGTTTAA

**Protein Sequence:** >RR212852 representing NM\_080891  
 Red=Cloning site Green=Tags(s)

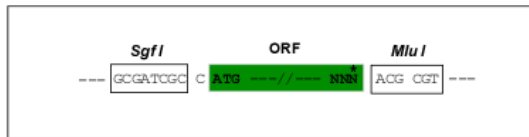
MATDDSIIVLDDDDDEDEAAAQPGSPNPASNPVSPGPEASGPSESHGDGGSSNSGSRKCYKLENEKLFEEF  
 LELCKMQTSDHPEVVPFLHKLQRAQSAFLASAEFRNLSRVLRSRNRPAKLYVYINELCTVLKAHSIK  
 KKLNLAPAASAESSGDNPPDPPSDLTNTETTASEASRTRGSRRIQRLQLLALVVAEIQRLQEKELDL  
 SELDDPDSSYLQEARLKRKLIRLFGRLCELKDCSSLTGRVIEQRIPIYRGTRYPEVNRRIERLINKPGPDT  
 FPDYGDVLRAVEKAATRHLGLPRQQLLLAQDAFRDVGVRLLQERRHLDLIYNFGCHLTDDYRPGVDPAL  
 TDPTLARLRLENRTLAMSRLDEVI SKYAMMQDKSEEGERQRRARLLATSQSSDLPKASSDSGEGPSGVA  
 SQEDPTTPKAETEDEEDDEESDDEEEEEEEEEEEATEDEDEDLEQLQEDQDDEEEEEEGDNEDDKSPTSPS  
 PIFRRRNSAPTEGLRSPPEEQERGLTGTPASPLEASPGLPSTDAESSGEQLQERLLAGESPVSQLSELDM  
 EALPEETIPSPEERGISSRRKSDSSLPTILENGAAMVTSTSFNGRVSSHPCRDASPPSKRFRKEKKQLG  
 PGPLENSYVKKQTMAQQDSGWKISVLPSTSSPLASVGPVADSSTRVDSPSHELVTSSLCNPSPSILQTP  
 QSQSPRPCIYKTSVATQCDPEEIIIVLSDSD

TRTRPLEQKLISEEDLAANDILDYKDDDDKV

**Restriction Sites:** SgfI-MluI

**Cloning Scheme:**

Cloning sites used for ORF Shuttling:



\* The last codon before the Stop codon of the ORF

**ACCN:** NM\_080891

**ORF Size:** 2190 bp

**OTI Disclaimer:** The molecular sequence of this clone aligns with the gene accession number as a point of reference only. However, individual transcript sequences of the same gene can differ through naturally occurring variations (e.g. polymorphisms), each with its own valid existence. This clone is substantially in agreement with the reference, but a complete review of all prevailing variants is recommended prior to use. [More info](#)

**OTI Annotation:** This clone was engineered to express the complete ORF with an expression tag. Expression varies depending on the nature of the gene.

**Components:** The ORF clone is ion-exchange column purified and shipped in a 2D barcoded Matrix tube containing 10ug of transfection-ready, dried plasmid DNA (reconstitute with 100 ul of water).

**Reconstitution Method:**

1. Centrifuge at 5,000xg for 5min.
2. Carefully open the tube and add 100ul of sterile water to dissolve the DNA.
3. Close the tube and incubate for 10 minutes at room temperature.
4. Briefly vortex the tube and then do a quick spin (less than 5000xg) to concentrate the liquid at the bottom.
5. Store the suspended plasmid at -20°C. The DNA is stable for at least one year from date of shipping when stored at -20°C.

**RefSeq:** NM\_080891.2, NP\_543167.2

**RefSeq Size:** 2483 bp

**RefSeq ORF:** 2193 bp

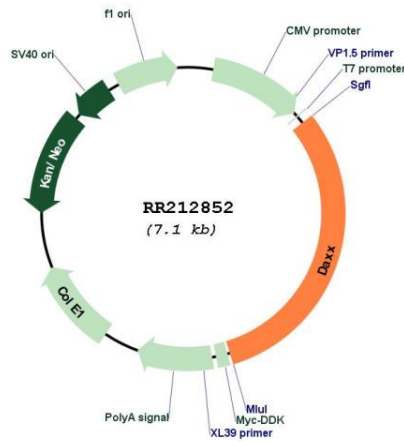
**Locus ID:** 140926

**Cytogenetics:** 20p12

**MW:** 80.7 kDa

**Gene Summary:** mouse homolog acts as a transcriptional repressor and plays a role in apoptosis [RGD, Feb 2006]

**Product images:**



Circular map for RR212852