

Product datasheet for **RR212760**

Pomc (NM_139326) Rat Tagged ORF Clone

Product data:

Product Type:	Expression Plasmids
Product Name:	Pomc (NM_139326) Rat Tagged ORF Clone
Tag:	Myc-DDK
Symbol:	Pomc
Synonyms:	alphaMSH; Pomc1; Pomc2
Mammalian Cell Selection:	Neomycin
Vector:	pCMV6-Entry (PS100001)
E. coli Selection:	Kanamycin (25 ug/mL)
ORF Nucleotide Sequence:	>RR212760 representing NM_139326 Red=Cloning site Blue=ORF Green=Tags(s)

TTTTGTAATACGACTCACTATAGGGCGCCGGGAATTCGTCGACTGGATCCGGTACCGAGGAGATCTGCC
GCC**CGATCGCC**

ATGCCGAGATTCTGCTACAGTCGCTCAGGGGCCCTGCTGCTGGCCCTCCTGCTTCAGACCTCCATAGACG
TGTGGAGCTGGTGCCTGGAGAGCAGCCAGTGCCAGGACCTACCACGAAAGCAACCTGCTGGCTTGCAT
CCGGGCCCTGCAGACTCGACCTCTCGGCCGAGACGCCCGTGTTCAGGCAACGGAGATGAACAGCCCTTG
ACTGAAAATCCCCGGAAGTACGTCATGGGTCACTTCGGCTGGGACCGCTTCGGCCCCAGAAACAGCAGCA
GTGCTGGCGGCTCAGCGCAGAGGCGTGCGGAGGAAGAGACGGCGGGGGGAGATGGCCGTCCGGAGCCAAG
TCCACGGGAGGGCAAGCGCTCCTACTCCATGGAGCACTTCGGCTGGGGCAAGCCGGTGGCAAGAAGCGG
CGCCCTGTGAAGGTGTACCCCAATGTGCGCCGAGAACGAGTCGGCCGAGGCCTTCCCTAGAGTTCAAGA
GGGAGCTGGAAGGCGAGCAGCCTGATGGCTTGGAGCACGTCTGGAGCCGGATACCGAGAAGGCCGACGG
GCCCTATCGGGTGGAGCACTTCGGCTGGGGCAACCCGCCAAGGACAAGCGCTACGGCGGCTTCATGACC
TCCGAGAAGAGCCAGACGCCCTGGTGACGCTCTCAAGAACGCCATCATCAAGAACGGCACAAGAAGG
GCCAG

ACGCGTACGCGGCCGCTCGAGCAGAAACTCATCTCAGAAGAGGATCTGGCAGCAAATGATATCCTGGATT
ACAAGGATGACGACGATAAGGTTTAA



[View online »](#)

Protein Sequence: >RR212760 representing NM_139326
Red=Cloning site Green=Tags(s)

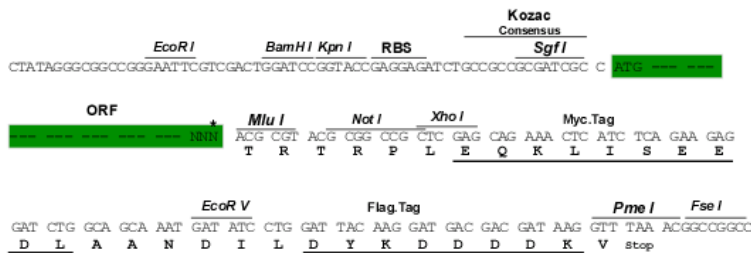
MPRFCYSRSGALLLALLLQTSIDVSWCLESSQCQDLTTESNLLACIRACRLDLSAETPVFPNGDEQPL
 TENPRKYVMGHRWDRFGPRNSSAGGSAQRRAEEETAGDGRPEPSREGKRSYSMEHFRWGKPVGKKR
 RPVKVYPNVAENESAEAFPLEFKRELEGEQPDGLEHVLEPDTEKADGPYRVEHFRWGNPPKDKRYGGFMT
 SEKSQTPLVTLFKNAIKNAHKKGQ

TRTRPLEQKLISEEDLAANDILDYKDDDDKV

Restriction Sites: SgfI-MluI

Cloning Scheme:

Cloning sites used for ORF Shuttling:



ACCN: NM_139326

ORF Size: 705 bp

OTI Disclaimer: The molecular sequence of this clone aligns with the gene accession number as a point of reference only. However, individual transcript sequences of the same gene can differ through naturally occurring variations (e.g. polymorphisms), each with its own valid existence. This clone is substantially in agreement with the reference, but a complete review of all prevailing variants is recommended prior to use. [More info](#)

OTI Annotation: This clone was engineered to express the complete ORF with an expression tag. Expression varies depending on the nature of the gene.

Components: The ORF clone is ion-exchange column purified and shipped in a 2D barcoded Matrix tube containing 10ug of transfection-ready, dried plasmid DNA (reconstitute with 100 ul of water).

Reconstitution Method:

1. Centrifuge at 5,000xg for 5min.
2. Carefully open the tube and add 100ul of sterile water to dissolve the DNA.
3. Close the tube and incubate for 10 minutes at room temperature.
4. Briefly vortex the tube and then do a quick spin (less than 5000xg) to concentrate the liquid at the bottom.
5. Store the suspended plasmid at -20°C. The DNA is stable for at least one year from date of shipping when stored at -20°C.

RefSeq: [NM_139326.2](#), [NP_647542.1](#)

RefSeq Size: 967 bp

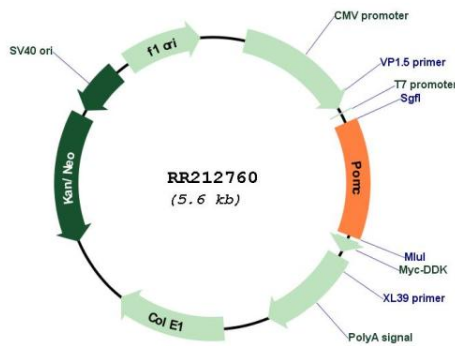
RefSeq ORF: 708 bp

Locus ID: 24664

Cytogenetics: 6q14

MW: 26.6 kDa

Product images:



Circular map for RR212760