

Product datasheet for RR212757

Mtus1 (NM_178093) Rat Tagged ORF Clone

Product data:

Product Type:	Expression Plasmids
Product Name:	Mtus1 (NM_178093) Rat Tagged ORF Clone
Tag:	Myc-DDK
Symbol:	Mtus1
Synonyms:	Atip3b; ATIP4; Mtsg1
Vector:	pCMV6-Entry (PS100001)
E. coli Selection:	Kanamycin (25 ug/mL)
Cell Selection:	Neomycin
ORF Nucleotide Sequence:	>RR212757 representing NM_178093 Red=Cloning site Blue=ORF Green=Tags(s)

TTTTGTAATACGACTCACTATAGGGCGCCGGGAATTCGTCGACTGGATCCGGTACCGAGGAGATCTGCC
GCCGCGATCGCC

ATGCTGTTGTCTCCAAATTCTCCTTATCCACCATTACGTCGCGCTAACCGCCAAGGGACTGCTTCGAA
ACCTCCGGCTTCTTCTGGGCTCAGGAAAACTGTCAATTTCCACACAGTTGAAAAAGGCAGGCAGAA
AAACCCAGAAGCCTGTGCATCCAGACGCAGACAGCTCCAGATGTGCTGTCCACCGAAAGGACCCCTGAG
TTGGCTGATTACAAGACAAAATGTGAAAATCAAAGTGGATTTATCTTGACCTCAAGCAGCTTCTCCT
GTGGTAATACCAAGTTTGAAGCACTCACAGTCGTGATCCAGCACCTCCTGTCTGAGCGGGAGGAAGCACT
GAAGCAACACAAAACCTCTCTCAAGAATTGTGAGCCTCCGGGGAGAGCTAGTTGCTGCTTCCAGCACC
TGTGAGAAGCTAGAAAAGGCCAGGAATGACTTGCAAAACAGCGTATGAAGGCTTCGTCCAGAACTAAACC
AGCAGCATCAGACGGACCAGACGGAATGGAGAACCGGCTGAAGGAGTTTACACGGCAGAGTGTGAGAA
GCTCCAGAGCATTTACATTGAGGAGGCAGAAAAATACAAAACCACTGCAAGAGCAGTTTGACAACTTA
AATGCCGCCATGAAACCACGAAGTTGGAGATTGAAGCTAGCCACTCAGAGAAAGTGGAGTTACTGAAGA
AGACCTATGAAACCTCCCTTTTCAGAAATCAAGAAAAGCCATGAAATGAAAAGAAGTTACTGGAAATCT
ACTTAATGAGAAGCAGGAATCACTAGAGAAACAAATCAATGATCTGAAGAGTGAGAACGATGCTTTAAAC
GAAAGTTGAAATCAGAGGAACAAAAGCAACTGTCAAGAGAGAAGGCCAACTCAAAAAACCTCAGGTCA
TGTATCTGGAGCAAGAACTAGAAAGCTGAAAGCTGTGTTGGAGATCAAGAATGAGAAGCTGCATCAGCA
GGACCTGAAGCTAATGAAGATGGAAAAGCTGGTGGACAACAACAACATTGGTTGACAAGCTGACGAGA
TTCCAGCAGGAAAACGAGGAGCTGAAAGCTCGCATGGACAGACACATGGCAATTTCAAGACAACCTTCCA
CAGAGCAGGCAGCGCTGCAAGAGTCCCTTGAGAAGGAGTCAAAGGTCAACAAGAGTTGTCCATGGAGAA
TGAGGAGCTGCTGTGAAAACGCACAACGGAGACCTCTGCAGCCCAAGAGATCCCCACATCCTCGGCC
ATCCCTTCCAGTCCCCAGGAATCTGGTTCTTCTCCAGCCCCAGCATCTCACCAGAA

ACGCGTACGCGGCCGCTCGAGCAGAACTCATCTCAGAAGAGGATCTGGCAGCAAATGATATCCTGGATT
ACAAGGATGACGACGATAAGGTTAA



Protein Sequence: >RR212757 representing NM_178093
Red=Cloning site Green=Tags(s)

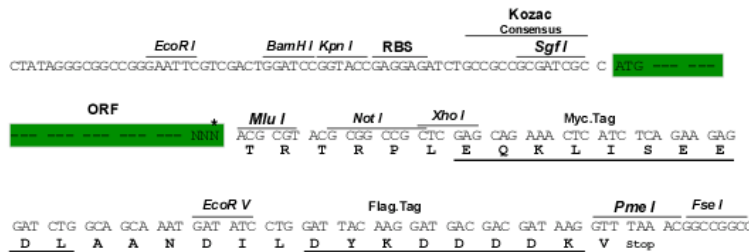
MLLSPKFSLSTIHVRLTAKGLLRNLRLPGLRKNTVIFHTVEKGRQKNPRSLCIQTQTAPDVLSTERTLE
 LADYKTKCENQSGFILHLKQLSCGNTKFEALTVVIQHLLSEREEALKQHKTLSQELVSLRGELVAASST
 CEKLEKARNDLQTAYEGFVQKLNQHQTDQTELENRLKEFYTAACEKLQSIYIEEAKEYKTQLQEQFDNL
 NAAHETTKLEIEASHSEKVELLKKTYETSLSEIKKSHEMEKKLLENLLNEKQESLEKQINDLKSENDALN
 ERLKSEEQKQLSREKANSKNPQVMYLEQLESLKAVLEIKNEKLHQDDLKMKMEKLVNNTTLVDKLR
 FQQENEELKARMDRHMATSRQLSTEQAALQESLEKESKVNKRLSMENEELLWKLHNGDLCSPKRSPTSSA
 IPFQSPRNSGSFSSPSISPR

TRTRPLEQKLISEEDLAANDILDYKDDDDKV

Restriction Sites:
Cloning Scheme:

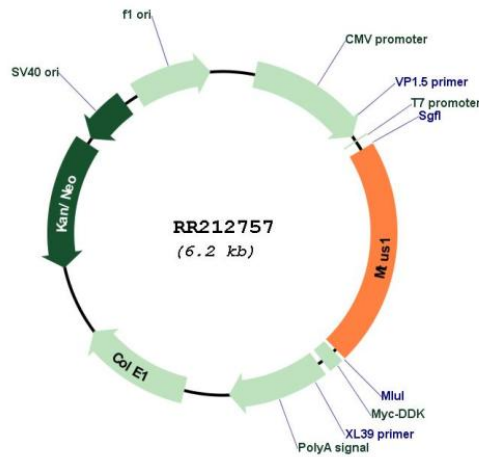
SgfI-MluI

Cloning sites used for ORF Shuttling:



* The last codon before the Stop codon of the ORF

Plasmid Map:



ACCN: NM_178093

ORF Size:	1320 bp
OTI Disclaimer:	The molecular sequence of this clone aligns with the gene accession number as a point of reference only. However, individual transcript sequences of the same gene can differ through naturally occurring variations (e.g. polymorphisms), each with its own valid existence. This clone is substantially in agreement with the reference, but a complete review of all prevailing variants is recommended prior to use. More info
OTI Annotation:	This clone was engineered to express the complete ORF with an expression tag. Expression varies depending on the nature of the gene.
Components:	The ORF clone is ion-exchange column purified and shipped in a 2D barcoded Matrix tube containing 10ug of transfection-ready, dried plasmid DNA (reconstitute with 100 ul of water).
Reconstitution Method:	<ol style="list-style-type: none">1. Centrifuge at 5,000xg for 5min.2. Carefully open the tube and add 100ul of sterile water to dissolve the DNA.3. Close the tube and incubate for 10 minutes at room temperature.4. Briefly vortex the tube and then do a quick spin (less than 5000xg) to concentrate the liquid at the bottom.5. Store the suspended plasmid at -20°C. The DNA is stable for at least one year from date of shipping when stored at -20°C.
RefSeq:	NM_178093.2 , NP_835194.2
RefSeq Size:	4065 bp
RefSeq ORF:	1323 bp
Locus ID:	306487
UniProt ID:	Q6IMY1
Cytogenetics:	16q12.1
MW:	50.7 kDa
Gene Summary:	human homolog is a mitochondrial protein that may be involved in regulation of cell proliferation [RGD, Feb 2006]