

## Product datasheet for **RR212750**

### **Oasl (NM\_001009681) Rat Tagged ORF Clone**

#### **Product data:**

Product Type:	Expression Plasmids
Product Name:	Oasl (NM_001009681) Rat Tagged ORF Clone
Tag:	Myc-DDK
Symbol:	Oasl
Synonyms:	Oasl1
Vector:	pCMV6-Entry (PS100001)
E. coli Selection:	Kanamycin (25 ug/mL)
Cell Selection:	Neomycin



[View online »](#)

**ORF Nucleotide Sequence:**

>RR212750 representing NM\_001009681  
 Red=Cloning site Blue=ORF Green=Tags(s)

TTTTGTAATACGACTCACTATAGGGCGGCCGGGAATTCGTCGACTGGATCCGGTACCGAGGAGATCTGCC  
 GCC**GCGATCGCC**

ATGGCAGTAGCCAGGAGCTTTACAGCTTCCAGCCTCCAAGCTGGACTCCTTTGTGGCTCAGTGGCTGC  
 AGCCAACCAGAGAATGGAAGGAGGAGGTCTGGAGACGGTGCAGACAGTGGAGCAGTTCCTGAGGCAGGA  
 GAACTTCCGTGGAGAACGTGGCCCGGCCAGGATGTACGAGTGTCAAGGTAACAAGTACTCAAGTACTGCTTT  
 GGGAAATGGCACAGTACTCAGGAGTACCACAGACGTGGAGCTGGTGGTGTCTCTGAGCTGTTTCCACAGCT  
 TCCAGGAAGAGGCCAACACCACCAGGCTGTTCTGAGACTGATACAGAAAAGGATGTCTTACTGCCGGGA  
 CCTGCTGGATCTCGGGCTCAGTAACCTGAGTGTGATTGAAGAAGTGCCCAGTAGTCTCATCTTCACTATC  
 CAGACCAGGGAGACCTGGGAGCCATCACTGTCAACATCGTCCCGCCTTCAGAGCCCTGGGACCTTCT  
 GTCCAACTCCGCCGAGGTCTATGTGAATCTGATCAAGGCTAACGGCTACCCCGAAATTTCTCTCTTC  
 CTTCAGCGAGCTACAGAGGAGCTTCGTGAAGCATAGGCCGACTAAGCTGAAGAGCCTCTACGGTTGGTC  
 AAACACTGGTACCAGCAGTACGTGAGAGACAAGTGCCCGGGCCAACCTGCCCCCTCTATGCCCTGG  
 AGCTGCTAACTGTCTACGCGTGGGAAGCAGGTACGCAGGAGGATTCGAACTTCAGGCTGGATGAAGGTCT  
 CGCCACTGTATGGAGTTGCTCCAGGATCATGAACTCCTGTGCATCTACTGGACCAAGTACTACACCCTG  
 CAACACCCAGTCATTGAGCGTTCGTCAAGGAGACAGCTCAAAGGAGAAAGGCCATTATCCTGGACCCAG  
 CAGACCCACCCACAACGTGGCGCAAGGCTACAGGTGGATATAGTTGCTCAGCGCGCCAGCCAGTGTCT  
 GAAACAGGACTGTTGCTATGACGACAGGGACGCCCGTCCCGAGCTGGACTGTGAAGAGACCCATAT  
 ATCCAGGTGACCGTGCAGCAGTGGGGTACCCGGATTTAATCCTCTGGGTGAACCCTTGAACCCATAA  
 AGAAGTGAAGAGAAAAATCCGACTGAGCCGGGGCTACTCCGGCTGCAGCGCCTGTCTTTCCAGGAGCC  
 CGGCGGCCAACGCGCAGCTCATCAGAAGCAATGCTCGCTTCCCTACTACGGAATCTTCTGCGACACTCAG  
 ATCTGCCTGCTGGACACCATCTCCCGGAGATCCAGGTCTTTGTGAAAAACCCGATGGTGAAGCCACG  
 CCTACGCCATCCACCACTTGACTTCGTCTGAGCCTGAAGCAGCAGATCGAAGATAGGCAGGGCCTTCA  
 AAGCCAGGAGCAGCAGCTGGAGTTCAGGGCCGCTCTGGAAGACTGGTTTGACTTTAATCCTATGCC  
 ATCCAAGATAGTATCACGATCATCTATCCAGGAAGAGGGAGGGGAAAGCCCATCTGCGCCAGC

AG**GCGACCG**ACGCGTACGCGCCGCTCGAGCAGAACTCATCTCAGAAGAGGATCTGGCAGCAAATGATATCC  
 TGGATTACAAGGATGACGACGATAAGGTTTAA

**Protein Sequence:**

>RR212750 representing NM\_001009681  
 Red=Cloning site Green=Tags(s)

MAVAQELYSFPASKLDSFVAQWLQPTREWKEEVLETVQTVEQFLRQENFRGERGPAQDVRVLKVLKVGCF  
 GNGTVLRSTTDVELVFLSCFHSFQEEAKHHQAVLRLIQKRMSYCRDLLDLGLSNLSVIEEVPSSLIFTI  
 QTRETWEPIITVTIVPAFRALGPSCPNSEVYVNLKANGYPGNFSPSFSELQRSFVKHRPTKLKSLRLV  
 KHWHYQQYVRDKCPRANLPLLYALELLTVYAWAAGTQEDSNFRLDEGLATVMELLQDHELLCIYWKYYTL  
 QHPVIERFVRRQLKGERPIILDADPTHNVAQYRWDIVAQRASQCLKQDCCYDDRDPVPSWTVKRAPHY  
 IQVTVQQWGHPLILWVNPYEPYIKKLEKIRLSRYSGLQRLSFQEPGGQRQLIRSQCCLAYYGFCDTQ  
 ICLLDTISPEIQVFNKPDGGSWAYIHLPLDFVLSLKQIQIEDRQGLQSQEQLEFQGRVLEDWDFKSYG  
 IQDSITIIILSRKREGKAPSAPS

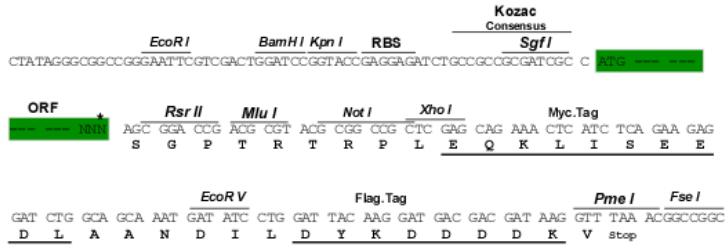
SGP**TRTRPLEQKLI SEEDLAANDILDYKDDDDK**V

**Restriction Sites:**

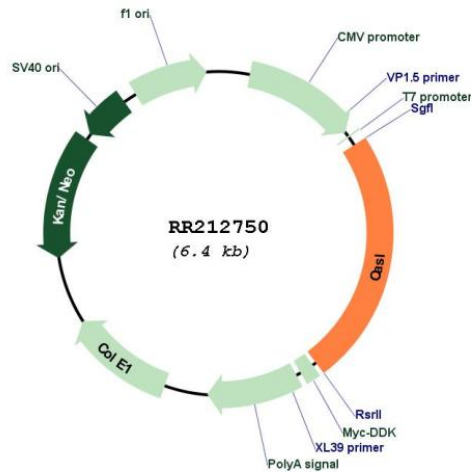
SgfI-RsrII

## Cloning Scheme:

Cloning sites used for ORF Shuttling:



\* The last codon before the Stop codon of the ORF

**Plasmid Map:**


**ACCN:** NM\_001009681

**ORF Size:** 1536 bp

**OTI Disclaimer:** The molecular sequence of this clone aligns with the gene accession number as a point of reference only. However, individual transcript sequences of the same gene can differ through naturally occurring variations (e.g. polymorphisms), each with its own valid existence. This clone is substantially in agreement with the reference, but a complete review of all prevailing variants is recommended prior to use. [More info](#)

**OTI Annotation:** This clone was engineered to express the complete ORF with an expression tag. Expression varies depending on the nature of the gene.

**Components:** The ORF clone is ion-exchange column purified and shipped in a 2D barcoded Matrix tube containing 10ug of transfection-ready, dried plasmid DNA (reconstitute with 100 ul of water).

<b>Reconstitution Method:</b>	<ol style="list-style-type: none"><li>1. Centrifuge at 5,000xg for 5min.</li><li>2. Carefully open the tube and add 100ul of sterile water to dissolve the DNA.</li><li>3. Close the tube and incubate for 10 minutes at room temperature.</li><li>4. Briefly vortex the tube and then do a quick spin (less than 5000xg) to concentrate the liquid at the bottom.</li><li>5. Store the suspended plasmid at -20°C. The DNA is stable for at least one year from date of shipping when stored at -20°C.</li></ol>
<b>RefSeq:</b>	<u>NM_001009681.1</u> , <u>NP_001009681.1</u>
<b>RefSeq Size:</b>	1980 bp
<b>RefSeq ORF:</b>	1539 bp
<b>Locus ID:</b>	304545
<b>UniProt ID:</b>	<u>G3V645</u>
<b>Cytogenetics:</b>	12q16
<b>MW:</b>	59 kDa
<b>Gene Summary:</b>	Does not have 2'-5'-OAS activity, but can bind double-stranded RNA. Displays antiviral activity via an alternative antiviral pathway independent of RNase L (By similarity).[UniProtKB/Swiss-Prot Function]