

Product datasheet for RR212725

Gpr150 (NM_001109173) Rat Tagged ORF Clone

Product data:

Product Type: Expression Plasmids
 Product Name: Gpr150 (NM_001109173) Rat Tagged ORF Clone
 Tag: Myc-DDK
 Symbol: Gpr150
 Synonyms: RGD1564729
 Vector: pCMV6-Entry (PS100001)
 E. coli Selection: Kanamycin (25 ug/mL)
 Cell Selection: Neomycin
 ORF Nucleotide Sequence: >RR212725 representing NM_001109173
 Red=Cloning site Blue=ORF Green=Tags(s)

TTTTGTAATACGACTCACTATAGGGCGGCCGGAATTCGTCGACTGGATCCGGTACCGAGGAGATCTGCC
 GCC**CGGATCGCC**

ATGGAAGATCCCTTCAGCCCTCAACTCTGTCTCCGGTGTCTAACCTATCCCTACCCATTCGGCAGAGCT
 GGGGTCTCAACCTCACTTCTAAGCAGGGAACCTCTGTGCCGGGACCGCAGCCGCCTCCACGCTGGCCACC
 TAGCCACCGGATCCATCTGGTCTTCTTGGGGATCATCCTGGCGGCTCGGTAGCTGGCAACACCACAGTG
 CTCTGCCGCTGTGCGGAGTAGCAGCCGACCCTGGCTGGGTCCCAAGCGTCGCAAGATGGACTTCTCTGC
 TGGTGAGCTAGCAGCGGCTGACCTGTACGCGAGTGGAGGCACCGCGCTGTGCGAGCTGGCTTGGGAGTT
 GCTGGGGACCCGCGACCTGCTCTGGGCAACTGGCTTGGCCGCTTCCAGTTGCTGCAGACATCTGGG
 CGGGGCGCTCCGCCACCTGGTGGCGCTCATTGCTTGGAGCGCCAGCTCGCAGTGCAGAGTCTCAGG
 GCCACAGTTGCCCGCACGCGCCCTGACTACCTGAGCTGGTGTCTGGCTCTGCTGCTTCTGCCGCC
 CACCTTCGTGGTGCCTGGGAAGCGCTCCATCTCAACCGCCAGCGCTGGCCCGGGGAGCATCGCTGC
 CACGACATCTTCGCCCCCTGCCGCGCTGGCACCTGCAGGTCTACGCGCTCTACGAGGCTATCGTGGGT
 TCGGGCGCCAGTCGCGATCTTGGGTGTCTTGGCGTCACTGTGTGTCTGGTGGCGCGCGGGTC
 TCAGGCTTCGGTGGCTGGGATGCCCTGGTCCGCCAGTATGGCTCGAGCCTCCTTACCCAGTGCCTGCC
 CGCGCAAGGTGCAGAGCTTAAAAATGAGCCTGGCACTGGCACTGCTCTTCGTGGGCTGCGACCTGCCCT
 ACTTTGCAGCTCGCTTGGCAGCCGCTGGTCTCGGGGACCGGGGTGATTGGGAGGGAGAGAGCCTGGT
 AGCCGCGATGCGGGTCTAGAGGTGGCCAAACAGCGCTGTCAATCCTTGGTCTACCTTTCTTCCAGACG
 GGTGACTGCCGTCTTGGCGGGCTACGGAGGCGTATAGGAGTTCTGTGCTGCTGCAGGAGGAAGAAG
 CCGAGATCAGCGGAGGGGCTGGGACCACCAGGCACTCCACCGCCATCGTGGCCCCACCCCATATCA
 CCATGCCCGCGGGAGGAGCGGGACCAAGGCGGCTGCGCCACCCCGCCACGCCCCAGACCTCTGCC
 TGCTCCTGTGAAAGTGCCTTC

ACGCGTACGCGGCCGCTCGAGCAGAAACTCATCTCAGAAGAGGATCTGGCAGCAAATGATATCCTGGATT
 ACAAGGATGACGACGATAAGGTTTAA



Protein Sequence: >RR212725 representing NM_001109173
Red=Cloning site Green=Tags(s)

MEDPFSPSTLSPVSNLSLPIRQSWG LNL TSKQGT SVPGPQPPR WPPSHRIHLVFLGIILAASVAGNTTV
 LCRLCGSSRPWLGP KRRKMDFLLVQLAAADLYASGGTALSQLAWELLGDPRPALGNLACRLSQLLQTS
 RGASAH LVALIALERQLAVRGPQGPQLPARAL T LSWLLALLLALPPTFVVRWEAPPSSTASAWPGEHRC
 HDIFAPLPRWHLQVYAL YEAI VGF AAPVA I L GVSCGHLLCVWRRGSQASVAGMPWSASMARASLPALP
 RAKVQSLKMSLALALLFVGC DLPYFAARLAAAWSSGHRGDWEGESLVAAMRVVEVANSVNPLVYLFFQT
 GDCRLWRRLRRRIGVLCCVQEEAEISGGAGDHQALHRHRWPHPHYHHARREERDQGGLRPPPPRPLP
 CSCESAF

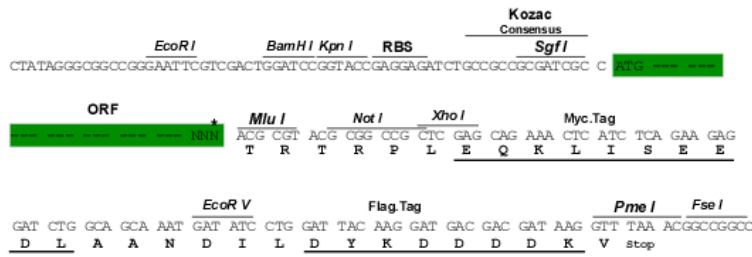
TRTRPLEQKLISEEDLAANDILDYKDDDDKV

Restriction Sites:

SgfI-MluI

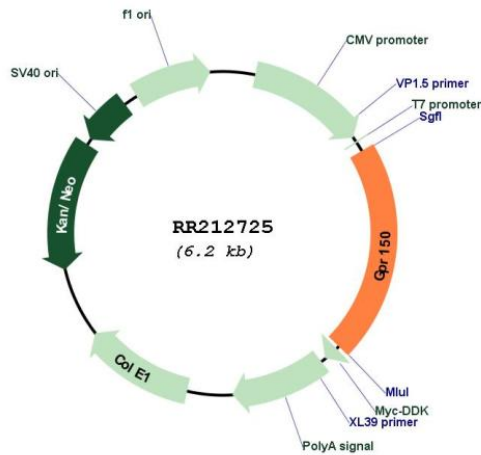
Cloning Scheme:

Cloning sites used for ORF Shuttling:



* The last codon before the Stop codon of the ORF

Plasmid Map:



ACCN: NM_001109173

ORF Size:	1281 bp
OTI Disclaimer:	<p>Due to the inherent nature of this plasmid, standard methods to replicate additional amounts of DNA in E. coli are highly likely to result in mutations and/or rearrangements. Therefore, OriGene does not guarantee the capability to replicate this plasmid DNA. Additional amounts of DNA can be purchased from OriGene with batch-specific, full-sequence verification at a reduced cost. Please contact our customer care team at custsupport@origene.com or by calling 301.340.3188 option 3 for pricing and delivery.</p> <p>The molecular sequence of this clone aligns with the gene accession number as a point of reference only. However, individual transcript sequences of the same gene can differ through naturally occurring variations (e.g. polymorphisms), each with its own valid existence. This clone is substantially in agreement with the reference, but a complete review of all prevailing variants is recommended prior to use. More info</p>
OTI Annotation:	This clone was engineered to express the complete ORF with an expression tag. Expression varies depending on the nature of the gene.
Components:	The ORF clone is ion-exchange column purified and shipped in a 2D barcoded Matrix tube containing 10ug of transfection-ready, dried plasmid DNA (reconstitute with 100 ul of water).
Reconstitution Method:	<ol style="list-style-type: none"> 1. Centrifuge at 5,000xg for 5min. 2. Carefully open the tube and add 100ul of sterile water to dissolve the DNA. 3. Close the tube and incubate for 10 minutes at room temperature. 4. Briefly vortex the tube and then do a quick spin (less than 5000xg) to concentrate the liquid at the bottom. 5. Store the suspended plasmid at -20°C. The DNA is stable for at least one year from date of shipping when stored at -20°C.
RefSeq:	<u>NM_001109173.1, NP_001102643.1</u>
RefSeq Size:	2137 bp
RefSeq ORF:	1284 bp
Locus ID:	499486
Cytogenetics:	2q11
MW:	46.5 kDa