

Product datasheet for **RR212708**

Pigt (NM_001106540) Rat Tagged ORF Clone

Product data:

Product Type:	Expression Plasmids
Product Name:	Pigt (NM_001106540) Rat Tagged ORF Clone
Tag:	Myc-DDK
Symbol:	Pigt
Vector:	pCMV6-Entry (PS100001)
E. coli Selection:	Kanamycin (25 ug/mL)
Cell Selection:	Neomycin



[View online »](#)

ORF Nucleotide Sequence:

>RR212708 representing NM_001106540
 Red=Cloning site Blue=ORF Green=Tags(s)

TTTTGTAATACGACTCACTATAGGGCGGCCGGGAATTCGTCGACTGGATCCGGTACCGAGGAGATCTGCC
 GCC**CGGATCGCC**

ATGGCGGCTGCCATGCCGCTGGGTTTATCGTTGCTGTTGCTGGTGTAGTGGGGCAGGGCTGCTGTGGCC
 GCGTGGAGGGCCACGCGACAGCCTGCGAGAGGAACTCGTTATCACTCCGCTGCCTCCGGCGACGTGGC
 CGCCACATTCCAGTTCGCGACGCGTTGGGATTCGATCTGCAGCGGGAAGGAGTGTCCATTACAGGCTC
 TTCCCTAAAGCCCTGGGACAGTTGATCTCCAAGTACTCTGCGGGAGCTACACCTGTCATTACAGCAAG
 GCTTTTGGAGGCCGATACTGGGGGCCACCCTTCTGCAGGCTCCATCAGGTGCAGAGCTCTGGGTCTG
 GTTCCAAGACTGTACAGATGTGGATAAGTCTTGAAGGAGCTCAGTAATGTCCTCTCAGGGATCTTC
 TGCGCGTCCCTCACTTCATCGACTCCACCAATACCGTACTCCACAGCCTCCTCAAACCTCTGGGGC
 TGGCAATGACTGACACTACTTCTGCGCTATGCTGTGCTGCCCCGGGAGGTCTGTCACCCAGAA
 TCTCAGCCGTGGAAGAAGCTCCTGCCCTGTAGCTCCAAGGCAGGGCTGTCCGTCTACTGAAAGCAGAT
 CGATTGTTCCACACCAGTTACCACTCCAGGCAGTGCATATCCGGCCAATCTGCAGAAATGCTCACTGCA
 CAGTATCTCCTGGGAGCTGAGGCAGACCCCTTTCAGTTGTCTTTGATGCCTTCATCACCCGACAGGGAA
 GAAAGACTGGTCCCTCTCCGCATGTTCTCCGGACTCTCACAGAGCCCTGTCCATTGGCATCTCAGAGC
 CTAGTTTATGTGGACATCACAGGCTACAGCCAGGACAACGAAACTGGAGGTGAGCCCTCCCCAACTT
 CCACATACCAGGATGTCAATTTGGGCACCAGGAAGACCTATGCCGTCTATGACTGTTTGACACAGCCAT
 GATCAATAACTCCGAAACCTCAACATCCAGCTCAAATGGAAGAGACCCCAAGATAATGAAGCCCTGCC
 GTGCCCTCCTGCATGCACAGCGGTACGTGAGTGGTTATGGGCTACAGAAGGGCGAGCTGAGCACCCCTGT
 TGTACAACTCTCATCCTTACCGGGCCTCCCTGTGCTGCTGCTGCTGCTGCTGCTGCTGCTGCTGCTGCT
 GTATGTGCACACCCTCACCATCACCTCCAAGGGCAAGGATAATAAACAAGTTATATCCACTACCAGCCT
 GCCCAGGACCGCAGCAGCCCCACCTCCTGGAGATGCTCATTAGCTGCCGCGCAACTCCGTACCAAGG
 TCTCCATCCAGTTTGAACGAGCCCTGCTCAAGTGGACAGAATACACGCCAGACCCCAACCATGGCTTCTA
 TGTCAGCCCATCTGTCTCAGTGCCTTGTGCCAGCATGGTGGCAGCCAAACCAGTGGACTGGGAAGAG
 AGCCCTCTTTCAACACCTTGTCCCGTGTCTGATGGCTCCAGCTACTTTGTCGACTCTACACAGAGC
 CCTTGCTAGTGAACCTGCCACCCCGACTTACGATGCCCTACAATGTGATCTGCCTTACATGCACTGT
 GGTGGCCGTGTGCTATGGCTCCTTCTACAATCTCCTCACCCGAACCTTCCACATTGAAGAGCCCAATCC
 GCGGCCCTGGCAAGCGGCTGGTAACCTCATCCGGCGTCTCTGTTGTTCCCCCTCTC

AG**CGGACCG**ACGCGTACGCGGCCGCTCGAGCAGAACTCATCTCAGAAGAGGATCTGGCAGCAAATGATATCC
 TGGATTACAAGGATGACGACGATAAGGTTTAA

Protein Sequence:

>RR212708 representing NM_001106540
 Red=Cloning site Green=Tags(s)

MAAAMPLGLSLLLLVLVGQCCGRVEGPRDSLREELVITPLPSGDVAATFQFRTRWSDQLQREGVSHYRL
 FPKALGQLISKYSLRELHLSFTQGFWRTRYWPPFLQAPSGAELWVWFQDTVTDVDSWKELSNVLSGIF
 CASLNFIDSTNTVPTASFKPLGLANDTDHYFLRYAVLPREVVCTENLTPWKLLPCSSKAGLSVLLKAD
 RLFHTSYHSQAVHIRPICRNAHCTSI SWELRQTL SVVFD AITGQGKDWSLFRMF SRTL TEACPLASQS
 LYYVDITGYSQDNETLEVSPPTSTYQDVILGTRKTYAVYDLFDTAMINNSRNLNIQLKWKRPDNEALP
 VPFLHAQRYVSGYGLQKQELSTLLYN SHPYRAFVLLLD AVPWYLRLYVHTLTITSKGKDNKPSYIHYQP
 AQDRQQPHLLEMLIQLPANSVTKVSIQFERALLKWTEYTPDPNHGFYVSPSVLSALVPSMVAAKPVDWEE
 SPLFNTLFPVSDGSSYFVRLYTEPLL VNLPTPDF SMPYNVICLTCTVVAVCYGSFYNLL TRTFHIEEPKS
 GGLAKRLANLIRRARGVPPL

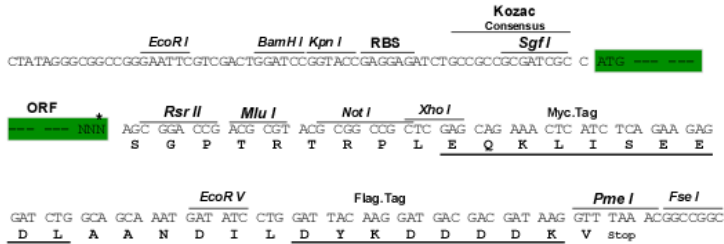
SGP**TRTRPLEQKLI SEEDLAANDILDYKDDDDK**V

Restriction Sites:

Sgfl-RsrII

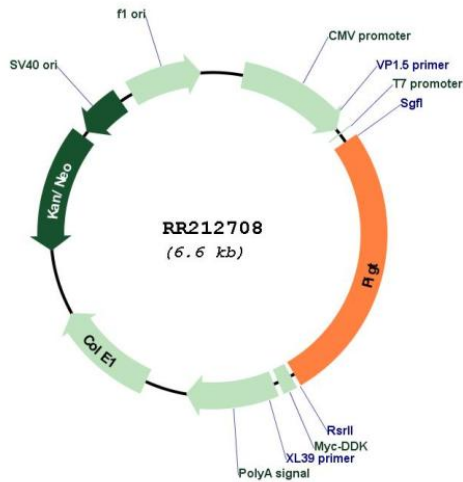
Cloning Scheme:

Cloning sites used for ORF Shuttling:



* The last codon before the Stop codon of the ORF

Plasmid Map:



ACCN:

NM_001106540

ORF Size:	1740 bp
OTI Disclaimer:	The molecular sequence of this clone aligns with the gene accession number as a point of reference only. However, individual transcript sequences of the same gene can differ through naturally occurring variations (e.g. polymorphisms), each with its own valid existence. This clone is substantially in agreement with the reference, but a complete review of all prevailing variants is recommended prior to use. More info
OTI Annotation:	This clone was engineered to express the complete ORF with an expression tag. Expression varies depending on the nature of the gene.
Components:	The ORF clone is ion-exchange column purified and shipped in a 2D barcoded Matrix tube containing 10ug of transfection-ready, dried plasmid DNA (reconstitute with 100 ul of water).
Reconstitution Method:	<ol style="list-style-type: none">1. Centrifuge at 5,000xg for 5min.2. Carefully open the tube and add 100ul of sterile water to dissolve the DNA.3. Close the tube and incubate for 10 minutes at room temperature.4. Briefly vortex the tube and then do a quick spin (less than 5000xg) to concentrate the liquid at the bottom.5. Store the suspended plasmid at -20°C. The DNA is stable for at least one year from date of shipping when stored at -20°C.
RefSeq:	NM_001106540.2 , NP_001100010.2
RefSeq Size:	2141 bp
RefSeq ORF:	1743 bp
Locus ID:	296360
Cytogenetics:	3q42
MW:	65.6 kDa