

Product datasheet for **RR212701**

Ptprn (NM_053881) Rat Tagged ORF Clone

Product data:

Product Type: Expression Plasmids
 Product Name: Ptprn (NM_053881) Rat Tagged ORF Clone
 Tag: Myc-DDK
 Symbol: Ptprn
 Synonyms: Ia-2; ICA512
 Vector: pCMV6-Entry (PS100001)
 E. coli Selection: Kanamycin (25 ug/mL)
 Cell Selection: Neomycin
 ORF Nucleotide Sequence: >RR212701 representing NM_053881
 Red=Cloning site Blue=ORF Green=Tags(s)

TTTTGTAATACGACTCACTATAGGGCGGCCGGAATTCGTCGACTGGATCCGGTACCGAGGAGATCTGCC
 GCC**GCGATCGCC**

ATGAGGCGCCCGGGCGGCCGGAGGTCCCGGGGCTGCGGGGGCTCCGAGGGTTCGGGGGCCTTCGGC
 TGCTGGTCTGCCTGCTGTTGTTGAGCGGCCGCCCGGGGGCTGCAGCGCCATCAGTGCCACGGCTGTCT
 CTTTGACCGCAGACTTTGTTTCGATCTGGAAGTCTGTATTCAGGATGGCTTGTGGACAGTGCCAGGCA
 GGAGTGGGGCAGGCACGGCCCTTTACAAGTCACTTCCCAGTTCTCCAGCGCTTACAAGTGTGCTCC
 GGCAACTCATGTCCCAAGGCTTGTCTGGCATGATGACCTCACCCAGTATGTGATCTCCAGGAGATGGA
 ACGAATCCCAGGCTTTCCTCCCCAGAACCTCATCCAAGGGACAGATCTGGATCGGTGCCAGGAGAGCA
 GGCCACAGCGGGGAATTGCTTTCTCAGGGCAATCCCAGTGGCTCCTCTCCTGCTGTCCAGGGGCTCTCTC
 GGCCTCCAGGGGATGGGAATGGAGCTGGGGTGGCTCCCACTGTCTCTCTGCAGGCTGAGCTGTTACC
 CCCTCTCTGGAGCATCTGCTAATGCCCGCAGCCTCCACCCCGTCTCTGACCTATGAACCTGCATTG
 CTACAACCTTACTTGTCCAGCAGTTGGTTCCCGAGATGGCTCCCGGGGCTCAGAGAGCCCTCTGGGG
 TAGTTGGCCATCTGGCCAAGGCTGAAGATCCTGTACTCTCAGCAGAAGCCTCTCCAAGGCCATTTGGG
 GACTCACTCTGGACACTCCTTTGGTACCTTACAGGTCCTCACCTGCTCAGCTTTTCCAGGATTCAGGG
 CTGCTCTACATGGCCCAAGAGTTGCCAGTGCCTGGCAGAGCCCGGGCGCCAAGGTTGCCAGAGGAAGGGG
 GCAGCAGCCGGGACAGGACTCTTCAGAGGGCCATGAGGAGGAAGTACTAGGGGGTTCATGGGGAGAAGTC
 CCCTCCCCAAGCAGTACAAGCAGATGTAAGTCTGCAGAGATTGGCTGCTGTGCTGGCAGGCTACGGAGTA
 GAGCTGCGTCAGCTGACCCCGAACAGCTTTCTACCTCTTAACCCTGCTGCAGTACTGCCAAGGGCA
 CAGGAAGACATCTGGAGGGGCTGTGAACGGAGGACCGATGTCAAGAAAACAATAGAAGAACAATGCA
 GAGAGGGGACACAGCAGACGCTCGGCCCCACACCCTTGCTTCTGGACACCCACTGCCAGCTCCACC
 TCCATCAAAGTTGGCAGGTGCTGAGCCCTGGTTCCCTGAACCTCCCAAGACATCCAGTCTCTGGGCA
 TCTCGGCTGCTCCTGCTGGAGAAGAAAAGTCCCTTGGGCCAGAGCCAGCCACAGTGGTGGACAGCCTTC
 AGCTCGACCGTCCGCTGAGGAGTATGGCTATATAGTCACTGATCAGAAACCCCTGAGTCTGGTGGCTGGA
 GTGAAGTTGCTGGAGATCCTGGCTGAACATGTGCACATGACTTACGGCAGCTTCATCAACATCAGTGTGG



[View online »](#)

TAGGACCAGCTGTACCTTCCGAATCCGGCACAATGAGCAGAACTTGCTTTGGCAGATGTGACCCAGCA
 AGCTGGGCTGGTGAAGTCTGAACTGGAAGCGCAGACAGGGCTCCAGATTTTCAGACAGGGGTGGGACAG
 AGGGAGGAATCCGCCGAGTCTTCCCCGACAAGCCATGGCATACTCCCATGCGCTCATTGCTGCTTA
 CTCTGGTGGCCCTGGCAGGTGTCGCTGGGCTACTAGTAGCTTTGGCGGTGGCCCTGTGTATGCGCCATCA
 TTCGAAACAACGGGATAAGGAGCGCCTGGCCGCGCTGGGGCCGGAGGGGGCCACGGTGACACTACTTTT
 GAATACCAGGACCTGTGTCGCCAGCACATGGCCACAAAGTCGCTGTTTAAACGGGGCAGAGGGTCAGCCAG
 AGCCTTCTCGGGTGAGCAGTGTCTCCAGTTCAGTGACGCGGCCAGGCCAGCCAGTTCACCATGATTCTG
 CAGCACACCGTCTGTTGCGAGGAGCCTGCCAGGCCAACATGGACATCTCCACAGGACACATGATTCTG
 GCATACATGGAGGATCACCTCCGGAACCGGGACCGGTTGGCCAAGAAGTGGCAGGCCCTGTGCGCTACC
 AAGCGGAGCCAAACACCTGTGCCACCGCACAAGGTGAAGGCAACATCAAGAAGAACCGCCATCTGACTT
 CTTACCTATGACCATGCCCCAATCAAGCTGAAAGTGGAGAGCAGCCCTCTCGGAGTGATTACATCAAC
 GCCAGTCCATCATCGAGCATGACCCTCGGATGCCGGCTACATAGCCACACAGGGACCCCTGTCCACACA
 CCATCGCAGACTTCTGGCAGATGGTGTGGGAGAGTGGCTGCACTGTCATCGTTATGCTGACCCCTTGGT
 GGAGGATGGTGTCAAACAGTGTGACCGCTACTGGCCGGATGAAGGGTCTCCCTTACCAGTCTATGAG
 GTGAACCTGGTGTCTGAGCACATCTGGTGCAGGACTTCTGGTGGGAGCTTCTACCTGAAGAAGTGC
 AGACCCAGGAGACGCGCAGCTCACTCAGTTCCACTTCTCAGCTGGCCGGCAGAGGGCACTCCGGCCTC
 CACCCGGCCGCTGCTGGACTTCCGAGGAAAGTGAACAAGTGTACAGAGGCCGCTCTGTCCCATCATA
 GTGCACTGCAGTATGGTGCAGGGAGGACAGGCACCTACATCCTTATTGACATGGTACTGAATCGCATGG
 CGAAAGGAGTGAAGGAGATTGATATCGCTGCCACCCTGGAGCATGTCCGTGACCAGCGACCTGGCCTTGT
 CCGTTCTAAGGACCAGTTTGAGTTTGGCTGACAGCCGTGGCGGAGGAGTGAATGCCATCTCAAGGCC
 CTGCCCCAG

ACGCGTACGCGGCCGCTCGAGCAGAACTCATCTCAGAAGAGGATCTGGCAGCAAATGATATCTGGATT
 ACAAGGATGACGACGATAAGTTTAA

Protein Sequence:

>RR212701 representing NM_053881
 Red=Cloning site Green=Tags(s)

MRRPRRPGGPAGCGGSESGGLRLLVCLLLL SGRPGGCSAISAHGCLFDRRLCSHLEVCIQDGLFGQCQA
 GVGQARPLLQVTSPLVLRQLQGLRQLMSQGLSWHDDL TQYVISQEMERIPRLRPPPEPHRDRSGSVPRRA
 GPAGELL SQGNPTGSSPAVQGLSRPPGDGNGAGVGSPLSSLQAELL PPLLEHLLMPPQPPHPSLTYEPAL
 LQPYLFQQFGSRDGSRGSE SASGVVGH LAKAEDPVLFSRSLSKAILGTHSGHSFGDLTGPSPAQLFQDSG
 LLYMAQELPVPGRARAPRLPEEGSSRAEDSSEGHEEEVLGGHGEKSPQAVQADVSLQRLAAVLAGYGV
 ELRQLTPEQLSTLLTLLQLLPGKGTGRHLGGAVNGGADVKKTIEEQMQRGDTADARPPTPLLPGHPTASST
 SIKVRQVLSPGFPEPKTSSPLGISAVLLEKKSPLGQSQPTVVQGPSARPSAEEYGYIVTDQKPLSLVAG
 VKLLEILA AEHVMTSGSF INISVVGPAVTFRIRHNEQNL SLADVTQQAGLVKSELEAQTGLQILQTGVGQ
 REESA AVLPRQAHGISPMRSLLLTLVALAGVAGLLVALAVALCMRHHSKQRDKERLAALGPEGAHGDTTF
 EYQDLCRQHMTKSLFNRAEQPEPSRVSSVSSQFSDAAQASPSHSSTPSWCEEPAQANMDISTGHMIL
 AYMEDHLRNRDLAKKWQALCAYQAEPNTCATAQGEENIKKRNHPDFLPYDHARIKLVESSPSRSDYIN
 ASPIIIEHDPMPAYIATQGPLSHTIADFWMVWESGCTVIIVMLTPLVEDGVKQCDRYWPDEGSSLYHVE
 VNLVSEHIWCEDFLVRSFYLNKVTQETRTL TQFHFLSWPAEGTPASTRPLLD FRFRKYNKCYRGRSCPII
 VHCSDGAGRTGTIYILIDMVLNRMAKGVKEIDIAATLEHVRDQRPGLVRSKDQFEFALTAVAEVNAILKALPQ

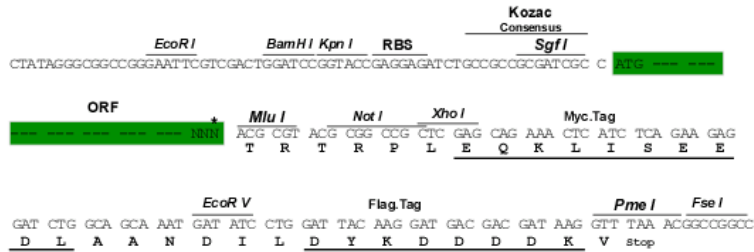
TRTRPLEQKLI SEEDLAANDILDYKDDDDKV

Restriction Sites:

Sgfl-Mlul

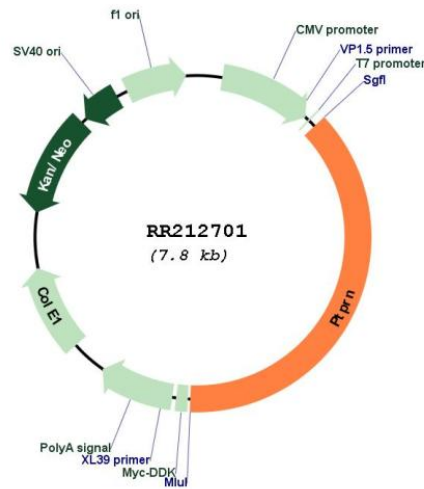
Cloning Scheme:

Cloning sites used for ORF Shutting:



* The last codon before the Stop codon of the ORF

Plasmid Map:



ACCN: NM_053881
 ORF Size: 2949 bp

OTI Disclaimer:	The molecular sequence of this clone aligns with the gene accession number as a point of reference only. However, individual transcript sequences of the same gene can differ through naturally occurring variations (e.g. polymorphisms), each with its own valid existence. This clone is substantially in agreement with the reference, but a complete review of all prevailing variants is recommended prior to use. More info
OTI Annotation:	This clone was engineered to express the complete ORF with an expression tag. Expression varies depending on the nature of the gene.
Components:	The ORF clone is ion-exchange column purified and shipped in a 2D barcoded Matrix tube containing 10ug of transfection-ready, dried plasmid DNA (reconstitute with 100 ul of water).
Reconstitution Method:	<ol style="list-style-type: none"> 1. Centrifuge at 5,000xg for 5min. 2. Carefully open the tube and add 100ul of sterile water to dissolve the DNA. 3. Close the tube and incubate for 10 minutes at room temperature. 4. Briefly vortex the tube and then do a quick spin (less than 5000xg) to concentrate the liquid at the bottom. 5. Store the suspended plasmid at -20°C. The DNA is stable for at least one year from date of shipping when stored at -20°C.
RefSeq:	NM_053881.1 , NP_446333.1
RefSeq Size:	2952 bp
RefSeq ORF:	2952 bp
Locus ID:	116660
UniProt ID:	Q63259
Cytogenetics:	9q33
MW:	106.2 kDa
Gene Summary:	putative tyrosine phosphatase; involved in cytokine mediated signaling pathways [RGD, Feb 2006]