

Product datasheet for **RR212631**

Rbm46 (NM_001135717) Rat Tagged ORF Clone

Product data:

Product Type:	Expression Plasmids
Product Name:	Rbm46 (NM_001135717) Rat Tagged ORF Clone
Tag:	Myc-DDK
Symbol:	Rbm46
Synonyms:	RGD1560205
Vector:	pCMV6-Entry (PS100001)
E. coli Selection:	Kanamycin (25 ug/mL)
Cell Selection:	Neomycin



[View online »](#)

ORF Nucleotide Sequence:

>RR212631 representing NM_001135717
 Red=Cloning site Blue=ORF Green=Tags(s)

TTTTGTAATACGACTCACTATAGGGCGGCCGGGAATTCGTCGACTGGATCCGGTACCGAGGAGATCTGCC
 GCC**CGGATCGCC**

ATGAACGAAGAGAACACTGATGGAACAAATGGATGCAGTAAAGTACGCACTGGCACTCAGAATGAAGCCG
 CATTGCTGGCTCTGATGGAAAAGACTGGCTACAACATGGTCCAAGAAAATGGGCAAAGGAAATTTGGTGG
 TCCTCCTCCAGGTTGGGAAGGTCACCTCCCCCTAGAGTTGTGAAGTTTTTGTGGAAAATACCTCGT
 GATATGTATGAAGATGAATTGGTTCCTGTATTTGAAAGAGCTGGGAAGATATATGAATTCGACTGATGA
 TGGAAATTTAGTGGTGAAGATAGAGGTTATGCTTTCGTGATGTATACTACTAAAGAAGAAGCTCAATTAGC
 CATCCGGATTCTTAACAATTATGAGATTCGACCTGGGAAGTTTATTGGTGTGTGTGAAGCTTGGATAAT
 TGCAGATTATTTATTGGAGCAATCCCAAAGAAAAGAAAAGGAAGAAATTTGGATGAAATGAAGAAAG
 TTACAGAAGGTGTTGTAGATGTATTGTTTATCCAAGTCAACTGACAAAACCAAGAACCAGCGGTTTTGC
 ATTTGTTGAGTATGAGTCTCACAGAGCTGCTGCTATGGCCAGGAGAAAGCTGATCCAGGAACATTTCAA
 CTCTGGGGCCACACCATTAGAGTATGGGCTGATCCAGAGAAAAGTGGATGAGGAAACCATGCAGA
 GAGTTAAAGTTCTCTATGTAAGAAATCTAATGATCTCAACCACAGAGGAAACAATTAAGCAGAATTCAA
 TAAGTTCAAGCCTGGTGCAGTGGAACGAGTAAAGAAACTTAGAGATTATGCATTCGTTCACTTTTTCAAC
 CGGGAAGATGCAGTGGCTGCTATGTCTGTTATGAATGGAAAATGCATTGATGGAGCCAGTATTGAGGTAA
 CCCTGGCAAAGCCAGTAAATAAGAAAATACTTGGCGACAGCATCTTAATGGCCAGATCAGCCCCAATTC
 AGAAAACCTACTTGTTTATGCTAACAAGGAAGAGATCACTCCAAAAGCTAGGCAAGCCACCAACTCTC
 CCCACGCGTCTCAATGGTCAGCATAGTCCAAGCCCCCTGAGATTGAAAGATGACTTATCCTTTTTTTTC
 CTGGAACAAAGCTTACCCAATTAGTATGTATTCTTTAAAATCCAATCATTTTAACTTGCAGTATGCA
 TTTGGATTATTACTGCAACAAAATAATTGGGCACCACCAAGAATATTATTTATATTCAACAACAGCTCAG
 GATGGAAGAAAGTACTCTTGGTGTATAAAATAGTTATTCCTGCAATTGCAAATGGATCCCAGAGTTACTTCA
 TGCCAGATAAACTCTGCACAACGCTGGAGGATGCAAAGGAACTGGCAGCTCAGTTTACTGCTTCATTT
 GGACTACAATTTCCGTCGAGCTCAATAAATAGTCTTTCCCTGTTAGCGCTACCCTCTCTACTGGGACA
 CCCAGCGTGCTTCCTTACTTCAAGGCCTTATTCTTATCCAAGCTATCCCTTGCACCAACAATATCAC
 TTGCTAATGGCAGCCATGTTGGACAACGACTATATATCTCCAATCAGGCCTCATTCTTC

AG**CGGACCG**ACGCGTACGCGGCCGCTCGAGCAGAACTCATCTCAGAAGAGGATCTGGCAGCAAATGATATCC
 TGGATTACAAGGATGACGACGATAAGGTTTAA

Protein Sequence:

>RR212631 representing NM_001135717
 Red=Cloning site Green=Tags(s)

MNEENTDGTNGCSKVRTGTQNEAALLALMEKTGYNMVQENGQRKFGGPPPGWEGPPPPRGCEVFVGKIPR
 DMYEDELVPVFERAGKIYEFRLMMEFSGENRGYAFVMTTKEEAQLAIRILNNYEIRPGKFIGVCVSLDN
 CRLFIGAIPKEKKKKEILDEMKKVTEGVVDVIVYPSATDKTKNRGFAFVEYESHRAAAMARRKLIPTGFQ
 LWGHTIQVDWADPEKEVDEETMQRVKVLVYRNLMI STTEETIKAEFNKFKPGAVERVKKLRDYAFVHFFN
 REDAVAAMSVMNGKCIDGASIEVTLAKPVNKENTWRQLNGQISPNSENLLVYANKEESHKSLGKPPTL
 PTRLNGQHSPSPPEIERCTYPPFPGLTPI SMYSLKSNHFNSAVMHLDYCNKNNWAPPEYYLYSTTSQ
 DGKVLVYKIVIPAIANGSQSYFMPDKLCTTLEDAKELAAQFTLLHLDYFNRRSSINSLSPVSATLSTGT
 PSQLPYTSRPSYPSYPLSPTISLANGSHVQRLYISNQASFF

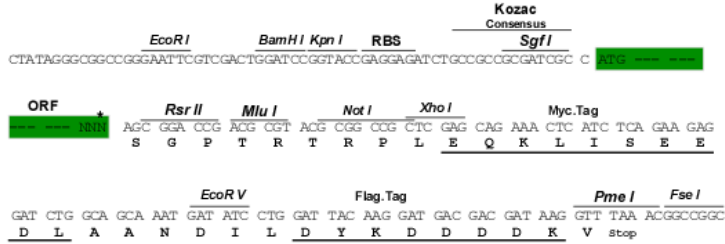
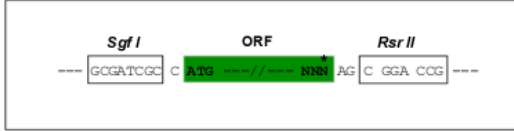
SGP**TRTRPLEQKLI SEEDLAANDILDYKDDDDKV**

Restriction Sites:

Sgfl-RsrII

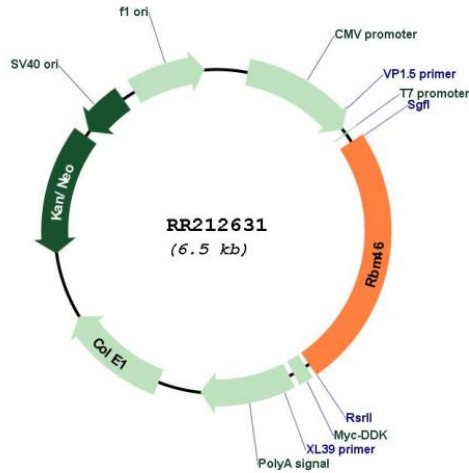
Cloning Scheme:

Cloning sites used for ORF Shuttling:



* The last codon before the Stop codon of the ORF

Plasmid Map:



ACCN:	NM_001135717
ORF Size:	1599 bp
OTI Disclaimer:	The molecular sequence of this clone aligns with the gene accession number as a point of reference only. However, individual transcript sequences of the same gene can differ through naturally occurring variations (e.g. polymorphisms), each with its own valid existence. This clone is substantially in agreement with the reference, but a complete review of all prevailing variants is recommended prior to use. More info
OTI Annotation:	This clone was engineered to express the complete ORF with an expression tag. Expression varies depending on the nature of the gene.
Components:	The ORF clone is ion-exchange column purified and shipped in a 2D barcoded Matrix tube containing 10ug of transfection-ready, dried plasmid DNA (reconstitute with 100 ul of water).
Reconstitution Method:	<ol style="list-style-type: none">1. Centrifuge at 5,000xg for 5min.2. Carefully open the tube and add 100ul of sterile water to dissolve the DNA.3. Close the tube and incubate for 10 minutes at room temperature.4. Briefly vortex the tube and then do a quick spin (less than 5000xg) to concentrate the liquid at the bottom.5. Store the suspended plasmid at -20°C. The DNA is stable for at least one year from date of shipping when stored at -20°C.
RefSeq:	NM_001135717.1 , NP_001129189.1
RefSeq Size:	1788 bp
RefSeq ORF:	1602 bp
Locus ID:	310548
Cytogenetics:	2q34
MW:	60.1 kDa