

Product datasheet for **RR212605**

Xrcc5 (NM_177419) Rat Tagged ORF Clone

Product data:

Product Type:	Expression Plasmids
Product Name:	Xrcc5 (NM_177419) Rat Tagged ORF Clone
Tag:	Myc-DDK
Symbol:	Xrcc5
Synonyms:	Ku80; Kup80
Mammalian Cell Selection:	Neomycin
Vector:	pCMV6-Entry (PS100001)
E. coli Selection:	Kanamycin (25 ug/mL)



[View online »](#)

ORF Nucleotide
Sequence:

>RR212605 representing NM_177419
 Red=Cloning site Blue=ORF Green=Tags(s)

TTTTGTAATACGACTCACTATAGGGCGGCCGGAATTCGTCGACTGGATCCGGTACCGAGGAGATCTGCC
 GCCGCGATCGCC

ATGGCGTGGTCCGGTAATAAGGCAGCTGTTGTGCTGTGTATGGATGTGGGGTTGCCATGGTAACCTCT
 TCCTGGTGAAGAATCCCACTTGAACAGGCCAAGAAAGTGATGACTATGTTTGTCCAACGACAGGTGTT
 TTCGAGAGCAAGGATGAGATCGCCTTAGTCCTCTATGGTACAGAGAGCACTGATAACGCCCTTGCTGGC
 AAGACCAGTATCAGAACATCACAGTGCACAGGCACCTGATGCTACCAGATTTTGATTTGCTGGAAGACA
 TCGGAAACAAAATCCAACCAAGTTCTCAACAAGCCGACTTCTGGACGCCCTGATTGTGTGCATGGATTT
 GATTACAGCGTAAACCATAGGAAAGAAGTTTGGGAAGAAGCATATTGAAGTGTCCACTGATCTCAGCAGC
 CCATTCAGCCAAGACCACTGGACATTATAATTTGTAACCTGAAGAAGTCCGGCATCTCCCTGCAGTTCT
 TTCTGCCTTTTCCAATCGACAAGAATGGTGAGCCTGGGGAGACAGAAGACCAGACTCCAGCTTCGACCA
 CTGTGCACCCTCCTTCCCTCAAAAAGGACTTACTGAGCAGCAAAAAGGAAGGCATCCACATGGTGACGAGG
 GTGATGCTGTCTTTAGAAGGCAAAGATGGTCTGGATGAAATTTATTCCTTCAGCGAGAGTCTTCAGCAAC
 TGTGCATCTTTAAGAAGATTGAGAGGCGGTCTTGCCCTGGCCCTGCCAACTGACCATCGGCCCAACT
 GTCTATAAGGATCGTAGCCTATAAATCGATTGTACAGGAGAAATTTAAAAAGAGTTGGGTAGTTGTGGAC
 GCAAGAACTCTAAGAAGGAAGATATACAAAAGAGACTGTTTATTGCCTAAATGACGATGATGAAACTG
 AAGTTTCCAAAGAGGACACTATTCAGGGTTCGCTATGGAAGCGACATCATTCTTTTTCTAAAGTGA
 TGAGGAACAAATGAAATATAATCGGAGGGGAAGTGCTTCTCTGTTCTGGGGTCTGTAATCTTCTCAG
 GTTCATAGAAGATTCTTCATGGGACATCAAGTTCTGAAGTCTTCGCAGCGAAGGATGATGAGGCAGCAG
 CTGTTGCACTTTCTCCCTAGTTCACGCTTTGGATGAGTTAAACATGGTCGCTATCGTCCGCTACGCCTA
 TGACAAAAGAGCTAATCCTCAAGTTGGTGTAGCCTTCCCTTTCATTAAGGATGCCTATGAGTGTGTTAGTT
 TATGTGCAGCTGCCTTTCATGGAAGACTTGCGGCAATACATGTTTTCTCACTGAAAAACAATAAGAAGT
 GCACCCACACAGAGGCACAGCTGAGTGCATCGATGATCTGATTGATTCCATGAGCTTGGTAAAGAAAA
 CGAGGAAGAAGACATCATCGAAGACTTGTTCACACCTCCAAAATTCAAATCCTGAATTCAGCGGTTG
 TACCAGTGTCTGCTGCACAGAGCCTTACATCTCCAGGAGCGGCTGCCCAATTCAGCAGCACATTTTGA
 ATATGCTGGATCCCCCACTGAGATGAAAGCAAAATGTGAGATCCACTCTCTAAAGTAAAGACCTTTT
 CCCTCTGACGGAAGTCGTTAAGAAAAAGGACCAAGTGACTGCTCAGGACGTTTTTCAAGACAATATTGAA
 GAGGGGCCGCTGCTAAAAATACAAGACTGAGAAAGAAGAAGGTCACATCAGCATCTCCAGCCTGGCAG
 AAGGGAATGTACCAAGGTTGGAAGTGTGAATCCTGTTGAAAACCTCCGTGCTCTAGTAAGACAGAAGAT
 TGCCAGCTTTGAGGAAGCGAGTCTCCAGCTAATGAGTCACATTGAACAGTTTTTGGATACCAATGAAACA
 CTGATTTTATGAAAAGTATGGACCGCATCAAAGCTCTCCGGGAGGAAGCCATTCAGTTTTTCAAGGAGC
 AGCGTTTCAACAGTTTCTGGAAGGCCTTCGAGAGAAAGTGGAAATTAACAATTAATCATTCTGGGA
 AATTGTCGTGCAGGATGGAATTAATCTGATCACCAAAGACGAAAGCCAGGAAGCTCTGTACAGCTGAG
 GAGGCCACGAAGTTCTGACCCCAAGACAAAAGCAAAAAGAACACAACAGGACTTGAAGAAGGTGGT
 ATGTGGATGATTTACTGGACATGATA

ACGCGTACGCGGCCGCTCGAGCAGAACTCATCTCAGAAGAGGATCTGGCAGCAAATGATATCCTGGATT
 ACAAGGATGACGACGATAAGGTTTAA

Protein Sequence: >RR212605 representing NM_177419
Red=Cloning site Green=Tags(s)

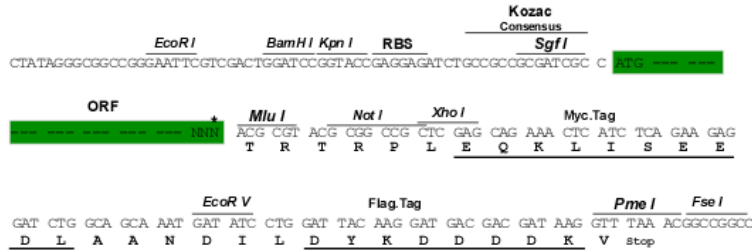
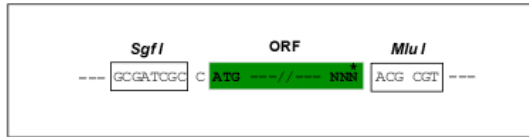
MAWSGNKAAVVL CMDVGVAMGNSFPGEESPLEQAKKVMFMVQQRQVFSSEKDEIALVLYGTESTDNALAG
 KDQYQNI TVHRHMLMPDFDLLEDIGNKI QPSSQQADFLDALIVCMDLIQRETIGKKFGKKHIEVFTLSS
 PFSQDQLDIIICNLKKSIGISLQFFLPFPIDKNGEPGETEDHSSFDHCAPSFQKGLTEQQKEGIHMVTR
 VMLSLEKGDGLDEIYSFSESLQQLCIFKKIERRSLPWPQCQLTIGPNLSIRIVAYKSI VQEKFKKSWVVVD
 ARTLKKEDIQKETVYCLNDDDETEVSKEDTIQGFYRGSDIIPFSKVDEEQMKYKSEGKCF SVLGFCKSSQ
 VHRFFFMGHQVLKVF AAKDDEAAAVALSSLVHALDELNMVAIVRYAYDKRANPQVGVAFFPKDAYECLV
 YVQLPFMEDLRQYMFSSLNKKCTPTEAQLSAIDDLIDSMSLVKKNEEEDIIEDLFPTSKIPNPEFQRL
 YQCLLHRALHLQERLPPIQQHILNMLDPPTMKAKEIPLSKVKTLPFLEVVKKKQDQVTAQDVFQDNIE
 EGPAKKYKTEKEEGHISISSLAEGNVTKVGSVNPVENFRVLVRQKIASFEEASLQLMSHIEQFLDTNET
 LYFMKSMDRIKALREAIQFSEEQRFN SFLEGLREKVEIKQLNHFWEIVVDGITLITKDESPGSSVTAE
 EATKFLTPKDKAKEDTTGLEEGD VDDLDMI

TRTRPLEQKLISEEDLAANDILDYKDDDDKV

Restriction Sites: SgfI-MluI

Cloning Scheme:

Cloning sites used for ORF Shuttling:



* The last codon before the Stop codon of the ORF

ACCN: NM_177419

ORF Size: 2196 bp

OTI Disclaimer: The molecular sequence of this clone aligns with the gene accession number as a point of reference only. However, individual transcript sequences of the same gene can differ through naturally occurring variations (e.g. polymorphisms), each with its own valid existence. This clone is substantially in agreement with the reference, but a complete review of all prevailing variants is recommended prior to use. [More info](#)

OTI Annotation: This clone was engineered to express the complete ORF with an expression tag. Expression varies depending on the nature of the gene.

Components: The ORF clone is ion-exchange column purified and shipped in a 2D barcoded Matrix tube containing 10ug of transfection-ready, dried plasmid DNA (reconstitute with 100 ul of water).

Reconstitution Method:

1. Centrifuge at 5,000xg for 5min.
2. Carefully open the tube and add 100ul of sterile water to dissolve the DNA.
3. Close the tube and incubate for 10 minutes at room temperature.
4. Briefly vortex the tube and then do a quick spin (less than 5000xg) to concentrate the liquid at the bottom.
5. Store the suspended plasmid at -20°C. The DNA is stable for at least one year from date of shipping when stored at -20°C.

RefSeq: [NM_177419.2](#), [NP_803154.1](#)

RefSeq Size: 2545 bp

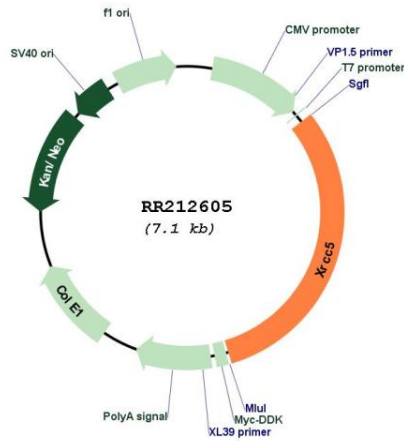
RefSeq ORF: 2199 bp

Locus ID: 363247

Cytogenetics: 9q33

MW: 83.1 kDa

Product images:



Circular map for RR212605