

Product datasheet for **RR212598**

Gsta1 (NM_031509) Rat Tagged ORF Clone

Product data:

Product Type:	Expression Plasmids
Product Name:	Gsta1 (NM_031509) Rat Tagged ORF Clone
Tag:	Myc-DDK
Symbol:	Gsta1
Synonyms:	GST 2-2; Gsta3; GST A3-3; Gsta5; GST AA; GST Yc1; Yc1
Vector:	pCMV6-Entry (PS100001)
E. coli Selection:	Kanamycin (25 ug/mL)
Cell Selection:	Neomycin
ORF Nucleotide Sequence:	>RR212598 representing NM_031509 Red=Cloning site Blue=ORF Green=Tags(s)

TTTTGTAATACGACTCACTATAGGGCGGCCGGAATTCGTCGACTGGATCCGGTACCGAGGAGATCTGCC
GCC**CGATCGCC**

ATGCCGGGAAGCCAGTCCTTCACTACTTCGATGGCAGGGGAGAATGGAGCCCATCCGGTGGCTCCTGG
CTGCAGCTGGAGTAGAGTTTGAAGAACAATTTCTGAAAACCTCGGGATGACCTGGCCAGGCTAAGGAATGA
TGGGAGTTTGATGTTCCAGCAAGTGCCCATGGTGGAGATTGATGGGATGAAGCTGGTGCAGACCAGAGCC
ATTCTCAACTACATTGCCACAAATACAACCTCTATGGGAAGGACATGAAGGAGAGAGCCCTCATCGACA
TGTATGCAGAAGGAGTGCGGATCTGGATGAAATAGTTTCCATTACCCTTACATTCCCCCTGGGGAGAA
AGAGGCAAGTCTTGCCAAAATCAAGGACAAAGCAAGGAACCGTTACTTTCTGCCTTTGAAAAGGTGTTG
AAGAGCCATGGACAAGATTATCTCGTTGGCAATAGGCTGAGCAGGGCTGATGTTTACCTAGTTCAAGTTC
TCTACCATGTGGAAGAGCTGGACCCAGCGCTTTGGCCAACTTCCTCTGCTGAAGGCCCTGAGAACCAG
AGTCAGCAACCTCCCCACAGTGAAGAAGTTTCTCAGCCTGGCAGCCAGAGGAAGCCATTAGAGGATGAG
AAATGTGTAGAATCTGCAGTTAAGATCTTCAGT

ACGCGTACGCGGCCGCTCGAGCAGAAACTCATCTCAGAAGAGGATCTGGCAGCAAATGATATCCTGGATT
ACAAGGATGACGACGATAAGGTTTAA



[View online »](#)

Protein Sequence: >RR212598 representing NM_031509
 Red=Cloning site Green=Tags(s)

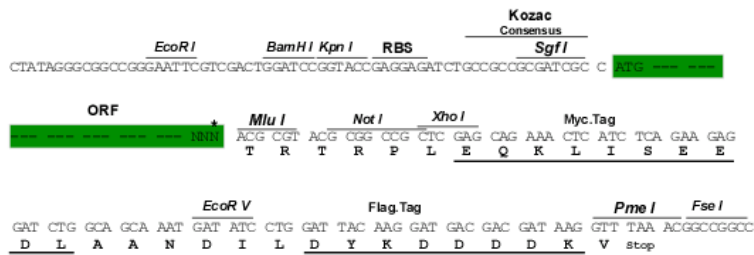
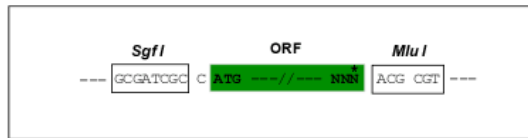
MPGKPVLYHYFDGRGRMEPIRWLLAAAGVEFEEQFLKTRDDLARLRNDGSLMFQQVPMVEIDGMKLVQTRA
 ILNYIATKYNLYGKDMKERALIDMYAEGVADLDEIVLHYPYIPPGEKEASLAKIKDKARNRYFPAFEKVL
 KSHGQDYLVGNRLSRADVYLQVLYHVEELDPSALANFPLLKALRTRVSNLPTVKKFLQPGSQRKPLEDE
 KCVESAVKIFS

TRTRPLEQKLISEEDLAANDILDYKDDDDKV

Restriction Sites: SgfI-MluI

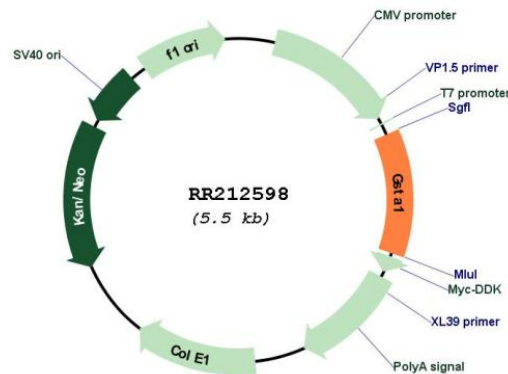
Cloning Scheme:

Cloning sites used for ORF Shuttling:



* The last codon before the Stop codon of the ORF

Plasmid Map:



ACCN: NM_031509

ORF Size: 663 bp

OTI Disclaimer:	The molecular sequence of this clone aligns with the gene accession number as a point of reference only. However, individual transcript sequences of the same gene can differ through naturally occurring variations (e.g. polymorphisms), each with its own valid existence. This clone is substantially in agreement with the reference, but a complete review of all prevailing variants is recommended prior to use. More info
OTI Annotation:	This clone was engineered to express the complete ORF with an expression tag. Expression varies depending on the nature of the gene.
Components:	The ORF clone is ion-exchange column purified and shipped in a 2D barcoded Matrix tube containing 10ug of transfection-ready, dried plasmid DNA (reconstitute with 100 ul of water).
Reconstitution Method:	<ol style="list-style-type: none">1. Centrifuge at 5,000xg for 5min.2. Carefully open the tube and add 100ul of sterile water to dissolve the DNA.3. Close the tube and incubate for 10 minutes at room temperature.4. Briefly vortex the tube and then do a quick spin (less than 5000xg) to concentrate the liquid at the bottom.5. Store the suspended plasmid at -20°C. The DNA is stable for at least one year from date of shipping when stored at -20°C.
RefSeq:	NM_031509.2 , NP_113697.1
RefSeq Size:	1178 bp
RefSeq ORF:	666 bp
Locus ID:	24421
UniProt ID:	P04904
Cytogenetics:	9q13
MW:	25.3 kDa
Gene Summary:	may play a role in drug resistance and carcinogenesis [RGD, Feb 2006]