

Product datasheet for **RR212564**

Akap4 (NM_024402) Rat Tagged ORF Clone

Product data:

Product Type:	Expression Plasmids
Product Name:	Akap4 (NM_024402) Rat Tagged ORF Clone
Tag:	Myc-DDK
Symbol:	Akap4
Vector:	pCMV6-Entry (PS100001)
E. coli Selection:	Kanamycin (25 ug/mL)
Cell Selection:	Neomycin



[View online »](#)

ORF Nucleotide Sequence:

>RR212564 representing NM_024402
 Red=Cloning site Blue=ORF Green=Tags(s)

TTTTGTAATACGACTCACTATAGGGCGGCCGGAATTCGTCGACTGGATCCGGTACCGAGGAGATCTGCC
 GCC**CGGATCGCC**

ATGATTGCTTACTGTGGCACTACAAAGATGTCTGATGACATTGACTGGTTACACAGCCGAGAGGCGTGT
 GCAAGGTAGATCTTTACAGCCCAGAAGGACAACAAGATCAGGACCGAAAAGTGATATGCTTTGTGGATGT
 GTCCACCTTGAATGTGGAAGATGATTCCAAGGGTCTGCTGGTCCCAGGTGACAGCGGCAATTAACCTG
 GAGAATCTGGAAGAAAAAGATTATCGTGATCAAGGACACAGAAAAACAAGACCAGCCTAAGACGGAGG
 GATCTGTATGCCTTTTCAAACAAGCTCCCTCTGACCCCAAAAGTGTCTCAACTGGCTCCTCAATGATCT
 CCAGAAGTACGCCTTGGGTTTCCAACATGCATTAAGTCCCTCAGCCTCTAGCTGTAACATAAAGTAGGA
 GACCTAGAGGGTATTATCACAAAATCCCTCAGAGAAGTGTACAGTGTGTATGCTGATCAAGTAACT
 TAGATTATTTGAACAAAGGACCTCAAACCTTCGCCTAGAAATGGCGGCATCCAAAAATACCAACAATAA
 CCAAAGTCCCTCAAATCTGCAACTAAATCTCCTAGCAATCAGAGGTGAGTTGCCACTCCTGATGGAGAA
 TGTTTCGATGGACGACCTCTCTACTATGTCAACCGATTGTCATCTCTAGTAATCCAAATGGCCCGTAAGG
 AAATCAAGGACAAATTGGAAGGTGGAAACAATGCCTCCATCATTCCATGTATACATCAGGAGAAAAGGG
 GAAAACAGCCCCCGAGTGTGTGAGCAAAATGCTTCTGAGATGGCCCATGAAGCTGTTGAACTGACC
 TCATCAGAAATGCGTGGAATGGAGAAGAAGGCAGGATGGCCGAAAACCTTTTGTATAGTGAGTTAT
 CTAATAAGAACAAGTGTGGAGAGAAGCAGCAGATGTGCCAAAAGACAGCAAGAATTTGCGAGTTCCAT
 CAGCAAGGGGCTTATGGTTTATGCAAAATCAGGTAGCATCTGACATGATGGTCTCTGTTATGAAAACCTTG
 AAAGTGACAGCTGTGGGAAGCAATCCAGCTTGTGTGGTCTGAAGAGGGTACTATTAAGCACACCA
 AGGAAATGTATCTGATCTGATTGACTCATGATGAAGAATGCATAATAACAGGAGCTCTGATGAC
 AGACTCAGACTTCGTTTCTGCTGTCAAGAGGAATCTTTTCAATCATGGTAAACAAAATGCAGCAGACATC
 ATGGAGGCCATGTAAAGCGTCTGGTCACTGCTCTTCTGGTGAAGAAGGAGACTAAATCTCAAAGTT
 TGGCATATGCAACCTTAAAAGCTGGAACCTCATGACCCGAAATGCAAGAATCAGAGCCTTGAGTTCTCAGC
 TATGAAAGCTGAAATGAAAGGAAAGGACAAAGGCAAAACTAAAGGAGATCCATGCTGTAATCACTGACA
 AGTGTGAGAGAGTCAAGCAACATATCCTCAAAGAGAGCCTTACTATGTGGAACAACCAGAAGCAAGGAA
 CCCAAGGCAGGGTGCCTAACAAAGTATGCCCTAGTAAAGATGAAAAGAGAGAGAAGATCAGTCTCCAC
 AGACTCACTGGCCAAGGATCTAATTGTCTCTGCCCTTATGCTCATTCAATACCATCTGACCAACAAGCG
 AAGGGCAAAGATCCATGTGAAGAGGAGTGCCTGGTTCCTCCATGGGCTATATGTCGCAAAGTGACAAT
 ATGAAAAGAGTGGAGGTGGCCAAAGTTCTAAATCACTTTCAATGAAGCATTTTGAATCTCGTGGAGCTCC
 TGGACCATCTACATGTGCGAAGGAAAATCAACTTGAGTCCCAGAAGATGGATATGTCAAACATGGTTCTG
 TCCCTGATTACAGAACTTCTGAGTGAGAGCCCTTTAGCTGTGATGAACTATCTGAAAGTGAGAATAAGC
 GTTGTGTGATTCTCGATCAAAGCAAGCAGCTCCCGTGGCCAAGAGACCTGAAGATCAAAGCCAAGACAG
 CACAGAAATGGACTTCATCAGCGGGATGAAGCAATGAACCGGCAGTTTATAGACCAACTAGTAGAATCG
 GTGATGAAACTGTGCCTGATCATGGCTAAGTACAGCAACAATGGAGCAGCACTAGCTGAGCTAGAAGAGC
 AAGCAGCCCTAGCAAGCAATGGCCCCAGATGTGGCCGTGAGGCTGTGATGTCACAAAGTTATCTGGAAC
 TCCTGGCCCTGAAGTTATCGTCAACAATCAGTGTCTACAAGCAACTTGCAAGCAGCTGCAGGCTGTC
 CTGCAATGGATTGCAGCGTCTCAGTTTAAATGTGCCATGCTCTACTTCATGGGAGATGATGATGGACAAC
 TAGAGAAGCTCCCTGAAGTTTACGTAAGGCAGCAGAGAAAGGTTACAGTGTAGGAGATCTTCTTACGGA
 GGTGATGAAGTTTGCAAAGAACGACAAGTGGATGAAGCCGTGGGCAACATGGCTAGAAAGCAACTGCTG
 GACTGGCTTCTCGCTAACCTG

ACGCGTACGCGGCCGCTCGAGCAGAAACTCATCTCAGAAGAGGATCTGGCAGCAATGATATCCTGGATT
 ACAAGGATGACGACGATAAGGTTTAA

Protein Sequence: >RR212564 representing NM_024402
Red=Cloning site Green=Tags(s)

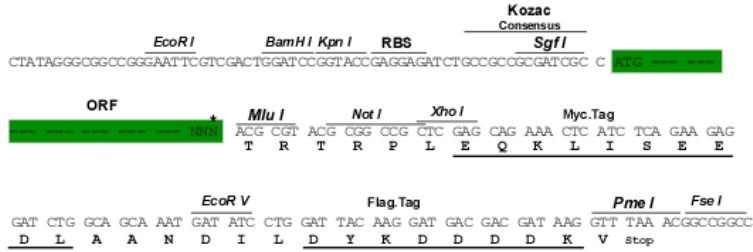
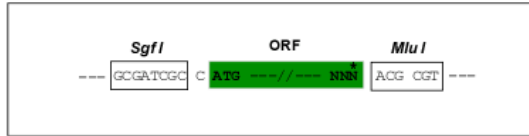
MIAYCGTTKMSDDIDWLHSRRGVCKVDLYSPEGQQDQDRKVICFVDVSTLNVEDDSKGAAGPRSDGELNL
ENLEEKEIIVIKDTEKQDQPKTEGSVCLFKQAPSDPISVLNWLNDLQKYGALGFQHALSPSASSCKHKVG
DLEGDYHKIPSENCYSVYADQVNDYLNKGPQNLRLLEMAASKNTNNNQSPSNPATKSPSNQRSVATPDGE
CSMDDL SYYVNRLSSLVIQMARKEIKDKLEGGNKCLHHSMYTSGEKGKTSPPRSVAVSKIASEMAHEAVELT
SSEMRNGE EGRDGRKTFLYSEL SNKNKCGEKQMQPKDSKEFADSI SKGLMVYANQVASDMMVSMKTL
KVHSCGKPI PACVVLKRVLLKHTKEIVSDLIDSCMKNLHNITGVLMTDSDFVSAVKRNLFNHGKQNAADI
MEAMLKRLVSALLGEKKETKSQSLAYATLKAGTHDPKCKNQSLEFSAMKAEMKGGKDKGKTKGDPCCKSLT
SAERVSEHILKESLTMWNNQKQGTQGRVFNKVCPSKDEKREKISPSTDSLAKDLIVSALMLIQYHLTQQA
KGGKDPCEEECPGSSMGYMSQSAQYEKSGGGQSSKSLSMKHFE SRGAPGPSTCAKENQLESQKMDMSNMVL
SLIQKLLSESPFSCDELSESENKRCCDSRSKQAAPVAKRPEDQSQDSTEMDFISGMKQMNRFIDQLVES
VMKLCCLIMAKYSNNGAALAELEEQAALASNGPRCGREAVMSQSYLETGPPEVIVNNQCSTSNLQKQLQAV
LQWIAASQFNPMLYFMGDDDGQLEKLPEVSAKAAEKGYSGDLLQEVMKFAKERQLDEAVGNMARKQLL
DWLLANL

TRTRPLEQKLISEEDLAANDILDYKDDDDKV

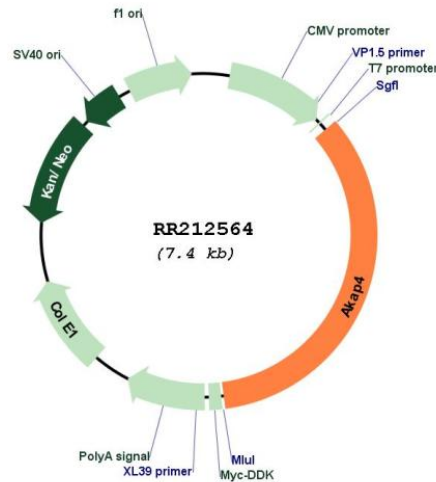
Restriction Sites: Sgfl-MluI

Cloning Scheme:

Cloning sites used for ORF Shuttling:



* The last codon before the Stop codon of the ORF

Plasmid Map:


ACCN: NM_024402

ORF Size: 2541 bp

OTI Disclaimer: The molecular sequence of this clone aligns with the gene accession number as a point of reference only. However, individual transcript sequences of the same gene can differ through naturally occurring variations (e.g. polymorphisms), each with its own valid existence. This clone is substantially in agreement with the reference, but a complete review of all prevailing variants is recommended prior to use. [More info](#)

OTI Annotation: This clone was engineered to express the complete ORF with an expression tag. Expression varies depending on the nature of the gene.

Components: The ORF clone is ion-exchange column purified and shipped in a 2D barcoded Matrix tube containing 10ug of transfection-ready, dried plasmid DNA (reconstitute with 100 ul of water).

Reconstitution Method:

1. Centrifuge at 5,000xg for 5min.
2. Carefully open the tube and add 100ul of sterile water to dissolve the DNA.
3. Close the tube and incubate for 10 minutes at room temperature.
4. Briefly vortex the tube and then do a quick spin (less than 5000xg) to concentrate the liquid at the bottom.
5. Store the suspended plasmid at -20°C. The DNA is stable for at least one year from date of shipping when stored at -20°C.

RefSeq: [NM_024402.1](#), [NP_077378.1](#)

RefSeq Size: 2786 bp

RefSeq ORF: 2544 bp

Locus ID: 79254

UniProt ID: [O35774](#)

Cytogenetics: Xq12

MW: 93.5 kDa

Gene Summary: Major structural component of sperm fibrous sheath. May play a role in sperm motility (By similarity).[UniProtKB/Swiss-Prot Function]