

## Product datasheet for **RR212549**

### Utp14a (NM\_001014113) Rat Tagged ORF Clone

#### Product data:

Product Type:	Expression Plasmids
Product Name:	Utp14a (NM_001014113) Rat Tagged ORF Clone
Tag:	Myc-DDK
Symbol:	Utp14a
Mammalian Cell Selection:	Neomycin
Vector:	pCMV6-Entry (PS100001)
E. coli Selection:	Kanamycin (25 ug/mL)



[View online »](#)

ORF Nucleotide  
Sequence:

>RR212549 representing NM\_001014113  
 Red=Cloning site Blue=ORF Green=Tags(s)

TTTTGTAATACGACTCACTATAGGGCGGCCGGGAATTCGTCGACTGGATCCGGTACCGAGGAGATCTGCC  
 GCCGCGATCGCC

ATGAGCGCGATCAAAGCTACGAAGGCCTTCTGGCTTTGAGCCAGCAGGACGATCTAATGGATTGCCAA  
 CCAACTACCCCTTTGAGTGACAGTGAAGATGAGGCGGGCAGTGATGGAGAAAGAAAAGCATCAAAAACCTCT  
 GGAAGCAATTGGTTCCCTTAGTGAAAAAATAGGTGAAAATTGCCTGAGAGATCTGAAGCTGGTCTGAAA  
 GTGTCTGAGTTAATGTTAGTTCTGAAGGATCTGGAGAAAAATTGGCCCTTTCAGATTTGCTTGAACCTC  
 TTAATCTTCACTCATTGGCTGCTGTTAAAAAGCAACTGAATAGAGTCAAATCAAAGAAGACTTTGGA  
 ATTACCTCTTCAAAAAGGAGAGTTGAACGGTCCACAGAGAAGTGGCCTTCAGTAACACTTCACAAGCC  
 CTCTCAAATGGGATTCTGTTGTTGAGAAGAACCAGGCGCAGCAGAGCAGCTGGTCTTCTCTGGAGAAGG  
 AGCCGACTTTTGTCCCATGGAACACGTGTTTTGTGAGTGAAGGCAAGAAGTCCACTGGAACAGGAAAT  
 CTTAACCTCCTCCATAAGAACAACAGCCAGTGACAGACCTTTACTGACCCCTGTGAAAAAGCCTCC  
 CTCAAAGCCATGAGCCTGGAAGAGGCTAAGATTGCGAGAGCAGAGCTTCAGAGGGCCGAGCTCTGCAGT  
 CCTACTATGAAGCCAGGGCTCGAAGAATGAAGAAAATCAAAAAGTAAAAAATATCACAAAATTGTGAAGAA  
 GGGAAAGGCCAGAGGCCCTCAAAGACTTTGAGCAGCTAAGGAAGGTTGATCCTGATGCTGCATTGGAA  
 GAAGTGGAAAAAATGAAAAAGCCAGAATGCTGGAACGAATGAGCCTTAAGCATCAAAACAGTGGGAAAT  
 GGGCAAGTCAAAGGCCATTATGGCAAAATATGACCTGGAGGCCCGCAAGCTATGCAAGAACAGTTGGC  
 TAAGAACAAGGAAGTACACAAAAGCTGCAAGTTGTTTCAGAGAGTGAGGAAGAGAGAGATGCTGAAGAG  
 GAAGAAGCCCTAGTCCCTGATATAGTGAACGAAGTGCAGAAGGCTGCCATGGACCAACTCCGTGGATGC  
 TCCGGAGTTGCAATCATGATGCAAAAAGAAAATGAGATCCAGGCCGATCCTGAACAACTACCTGAGCCTGC  
 GGCCCCGAGTTCTCAAAAATGAGGGAGATGAAAAACCAAGTGGCAGAGGAAGGCAAAATTGTTGGAGGAG  
 TTGGAGAAAAGGAGATCCCTTCGAAAAGATCAGAGCTCAACCATGATGCTGAGCCAGCGCTGACCAAA  
 AGCCAAAAGATTCTACCAACCAGGAGGTGTATCTGAATTGAGGGCATTGTCTAAGAAAAGTCAAGTAAAGGA  
 AAACCATCCATTCGAGAAGCAAAAGGAGAGTCCAGCAAAGACTGTTGGCCTGGTCCAGGAAGAGGAACCT  
 GGCCAGAGGAAGATGAGCCTCTATTGCTGCAGAGGCCAGAGAGAGTACGAACTCTGGAGGAACTAGAAG  
 AGCTAGGTAAAGAGTACAGTCTTCAAATAAGGAGCTCTCTAGACCTTCAGTAGAAGGGGAGCAGATGAG  
 GACGAACCCACAAAATCAGACCAAGGGGAAAAACAAGAAGGAGCAGATGATTAGTCTACAGAACCTCCTG  
 ACTACAAGAACTCCTTCTGTGACATCACTGGCACTTCCGACAACAGTGGAGGAGTTGGATGATGAAGTGA  
 AGAGAAAACAAAAGCAAATGATAAAGGAAGCTTTTGTGGGGATGATGTCATCAAAGAGTTCCTAAAAGA  
 GAAGAGAGAAGCTGTCCAGGCCAATAAGCCAAAGGACGTGGATCTGACCTTGCCTGGCTGGGGAGAGTGG  
 GGCGGGATGGACCTGAAGCCAGTGCTAAGAAAAGACGCCGTTTCTCATTAAAGCCCTGAAGTCCCTC  
 CAAGAAAAGATAAGAATTTGCCAACGTGATTATTAATGAGAAGCGTAATATCCACATTGCAGCTCACCA  
 GGTGCGGGTGCTCCGTATCCATTCACCCACCATCAGCAATTTGAAAGGACCATCCAGAATCCCATAGGG  
 TCCACATGGATCACCCAGCGAGCATTCCAAAAGCTGACTGCTCCCAAGTTGTGACCAAGCCAGGCCATA  
 TTATCAAGCCATAACAGCAGACGATGTGGTTCGCAATCTTCCCAAGTCTGACCTGTCTGTCATGCA  
 GACCAATCCAAAACGACACTGCAACATCAAAAGCAACTGAAGAAAAAGCTCTA

ACGCGTACGCGGCCGCTCGAGCAGAAAACATCTCAGAAGAGGATCTGGCAGCAAATGATATCCTGGATT  
 ACAAGGATGACGACGATAAGGTTTAA

**Protein Sequence:** >RR212549 representing NM\_001014113  
 Red=Cloning site Green=Tags(s)

```
MSAIKATKGLLALSQQDDLMDLPTNYPLSDSEDEAGSDGERKHQKLEAIGSLSGKNRWKLPERSEAGLK
VSEFNVSSEGSGEKLALSDLLEPLKSSSSLAAVKKQLNRVKSSTLELPLHKGEVERVHREVAFSNTSQA
LSKWDSSVQKNRAAEQLVFPLEKEPTTFVPMEHVFCWAKARSPLEQEIFNLLHKNKQPVTDPLLTPVEKAS
LKAMSLEEAKIRRAELQRARALQSYYEARARRMKKIKSKKYHKIVKKGKAQKALKDFEQLRKVDPDAALE
ELEKMEKARMLERMSLKHQNSGKWAWSKAIMAKYDLEARQAMQEQLAKNKELTQKLQVVSEEEERDAEE
EEALVPDIVNEVQKAAHGPNPWMLRSCNHDAKENEIQADPEQLPEPAPEFSKNEGDEKPVAAEGKLEEE
LEKRRSLRKRSELNHDAEPARDQPKDSTNQEVLSLRLSKKLSKENHPFEKQKESPAKTVGLVQEEEP
GPEEDEPLLLQRPVERTLEEELEELGKEYSLPNKELSRPSVEGEQMRTPNQNTKGKNNKEQMISLQNL
TTRTPSVTSLALPTTVEELDDEVKRNQKQMIKEAFAGDDVIKEFLKEKREAVQANKPKDVDLTLPGWGEW
GGMDLKP SAKRRRFLIKAPEGPPRKDKNLPNVIINEKRNIIAAHQVRLPYPFTHHQFERTIQNPIG
STWITQRAFQKL TAPKVVTKPGHIKIPITADDVGRQSSPRSDL SVMQTNPKRHCKHQKQLKKKAL
```

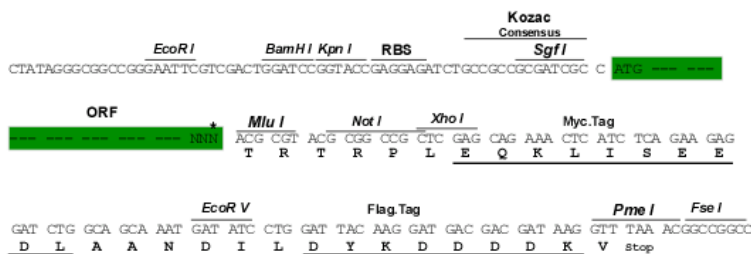
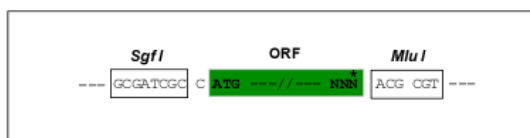
TRTRPLEQKLISEEDLAANDILDYKDDDDKV

**Restriction Sites:**

Sgfl-MluI

**Cloning Scheme:**

Cloning sites used for ORF Shuttling:



\* The last codon before the Stop codon of the ORF

**ACCN:** NM\_001014113

**ORF Size:** 2295 bp

**OTI Disclaimer:** The molecular sequence of this clone aligns with the gene accession number as a point of reference only. However, individual transcript sequences of the same gene can differ through naturally occurring variations (e.g. polymorphisms), each with its own valid existence. This clone is substantially in agreement with the reference, but a complete review of all prevailing variants is recommended prior to use. [More info](#)

**OTI Annotation:** This clone was engineered to express the complete ORF with an expression tag. Expression varies depending on the nature of the gene.

**Components:** The ORF clone is ion-exchange column purified and shipped in a 2D barcoded Matrix tube containing 10ug of transfection-ready, dried plasmid DNA (reconstitute with 100 ul of water).

**Reconstitution Method:**

1. Centrifuge at 5,000xg for 5min.
2. Carefully open the tube and add 100ul of sterile water to dissolve the DNA.
3. Close the tube and incubate for 10 minutes at room temperature.
4. Briefly vortex the tube and then do a quick spin (less than 5000xg) to concentrate the liquid at the bottom.
5. Store the suspended plasmid at -20°C. The DNA is stable for at least one year from date of shipping when stored at -20°C.

**RefSeq:** [NM\\_001014113.2](#), [NP\\_001014135.2](#)

**RefSeq Size:** 2488 bp

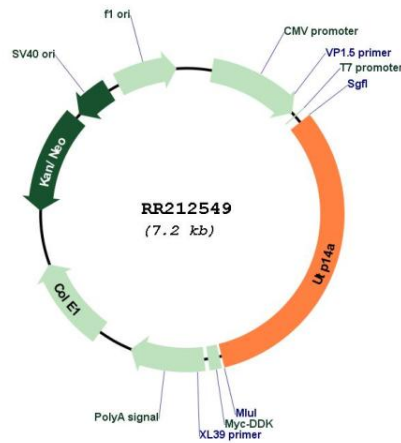
**RefSeq ORF:** 2298 bp

**Locus ID:** 317579

**Cytogenetics:** Xq36

**MW:** 87.2 kDa

**Product images:**



Circular map for RR212549