

Product datasheet for RR212441

Snrpb (NM_134358) Rat Tagged ORF Clone

Product data:

Product Type: Expression Plasmids
Product Name: Snrpb (NM_134358) Rat Tagged ORF Clone
Tag: Myc-DDK
Symbol: Snrpb
Mammalian Cell Selection: Neomycin
Vector: pCMV6-Entry (PS100001)
E. coli Selection: Kanamycin (25 ug/mL)
ORF Nucleotide Sequence: >RR212441 representing NM_134358
Red=Cloning site Blue=ORF Green=Tags(s)

TTTTGTAATACGACTCACTATAGGGCGGCCGGAATTCGTCGACTGGATCCGGTACCGAGGAGATCTGCC
GCC**CGATCGCC**

ATGACGGTGGGCAAGAGCAGCAAGATGCTGCAGCACATCGACTACAGGATGAGGTGCATCCTGCAAGATG
GCCGGATCTTCATCGGGACCTTCAAAGCTTTTGACAAGCATATGAACTTGATCCTCTGTGACTGTGATGA
GTTCCAGGAAGTCAAGCCAAAGAAGCTCCAAACAAGCAGAAAGAGAAGAGAAGCGAGTCTTGGTCTGGT
TTGCTTCGAGGAGAGAAGCTGGTCTCCATGACAGTAGAAGGACCTCTCCAAAGATACTGGCATTGCC
GAGTGCCACTTGGTGGAGCTGCTGGGGGCCAGGCATCGGAGGGCTGCTGGCAGAGGAATCCCGCGGG
TGTGCCCATGCCCAAGGCTCCTGCAGGGCTTGCTGGACCAGTGGCAGGTGTTGGAGGGCCGTCACAGCAG
GTGATGACCCCAAGGAAGAGGCACTGTGGCAGCTGCTGCAGCTGCAGCCACAGCCAGTATTGCAGGAG
CCCCAACTCAGTACCCACCTGGTCGTGGGGTCTCCTCCACCTATGGGCCGAGGGGCACCTCCTCCAGG
TATGATGGGCCACCTCCTGGCATGAGGCTCCCATGGGTCCCCAATGGGGATCCCTCCTGGCCGAGGA
ACTCCAATGGGCATGCCCTCCTGGGATGCGACCTCCTCCTCCAGGCATGCGAGGTCTGCTT

ACGCGTACGCGGCCGCTCGAGCAGAACTCATCTCAGAAGAGGATCTGGCAGCAAATGATATCCTGGATT
ACAAGGATGACGACGATAAGGTTTAA

Protein Sequence: >RR212441 representing NM_134358
Red=Cloning site Green=Tags(s)

MTVGKSSKMLQHIDYRMCILQDGRIFIGTFKAFDKHMNLILCDCDEFRIKPKNSKQAEREKRVLGLV
LLRGENLVSMTVEGPPPKDTGIARVPLAGAAGGPGIGRAAGRGIPAGVPMQAPAGLAGVVRGVGGPSQQ
VMTPQGRGTVAATAAATAASIAGAPTQYPPGRGGPPPMGRGAPPPGMMGPPPMRPPMGPMPGIPPRG
TPMGMPPPGMRPPPPGMRGLL

TRTRPLEQKLISEEDLAANDILDYKDDDDKV



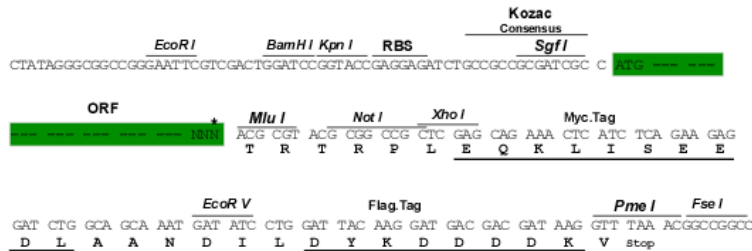
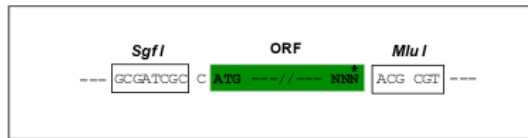
[View online »](#)

Chromatograms: https://cdn.origene.com/chromatograms/ja2114_b12.zip

Restriction Sites: SgfI-MluI

Cloning Scheme:

Cloning sites used for ORF Shuttling:



* The last codon before the Stop codon of the ORF

ACCN: NM_134358

ORF Size: 693 bp

OTI Disclaimer: Due to the inherent nature of this plasmid, standard methods to replicate additional amounts of DNA in E. coli are highly likely to result in mutations and/or rearrangements. Therefore, OriGene does not guarantee the capability to replicate this plasmid DNA. Additional amounts of DNA can be purchased from OriGene with batch-specific, full-sequence verification at a reduced cost. Please contact our customer care team at custsupport@origene.com or by calling 301.340.3188 option 3 for pricing and delivery.

The molecular sequence of this clone aligns with the gene accession number as a point of reference only. However, individual transcript sequences of the same gene can differ through naturally occurring variations (e.g. polymorphisms), each with its own valid existence. This clone is substantially in agreement with the reference, but a complete review of all prevailing variants is recommended prior to use. [More info](#)

OTI Annotation: This clone was engineered to express the complete ORF with an expression tag. Expression varies depending on the nature of the gene.

Components: The ORF clone is ion-exchange column purified and shipped in a 2D barcoded Matrix tube containing 10ug of transfection-ready, dried plasmid DNA (reconstitute with 100 ul of water).

Reconstitution Method:

1. Centrifuge at 5,000xg for 5min.
2. Carefully open the tube and add 100ul of sterile water to dissolve the DNA.
3. Close the tube and incubate for 10 minutes at room temperature.
4. Briefly vortex the tube and then do a quick spin (less than 5000xg) to concentrate the liquid at the bottom.
5. Store the suspended plasmid at -20°C. The DNA is stable for at least one year from date of shipping when stored at -20°C.

RefSeq: [NM_134358.1](#), [NP_599185.1](#)

RefSeq Size: 1106 bp

RefSeq ORF: 696 bp

Locus ID: 171365

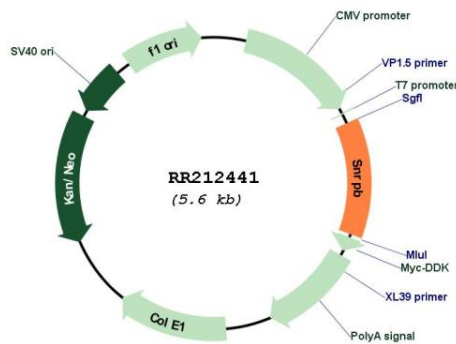
UniProt ID: [P17136](#)

Cytogenetics: 3q36

MW: 24.1 kDa

Gene Summary: one of several nuclear proteins that are small ribonucleoprotein particles (snRNPs); may play a role in pre-mRNA splicing [RGD, Feb 2006]

Product images:



Circular map for RR212441