

## Product datasheet for **RR212438**

### **Nek4 (NM\_001013134) Rat Tagged ORF Clone**

#### **Product data:**

Product Type:	Expression Plasmids
Product Name:	Nek4 (NM_001013134) Rat Tagged ORF Clone
Tag:	Myc-DDK
Symbol:	Nek4
Mammalian Cell Selection:	Neomycin
Vector:	pCMV6-Entry (PS100001)
E. coli Selection:	Kanamycin (25 ug/mL)



[View online »](#)

ORF Nucleotide  
Sequence:

>RR212438 representing NM\_001013134  
 Red=Cloning site Blue=ORF Green=Tags(s)

TTTTGTAATACGACTCACTATAGGGCGGCCGGGAATTCGTCGACTGGATCCGGTACCGAGGAGATCTGCC  
 GCC**CGGATCGCC**

ATGCCCAAGCCGCATACTGTTACTTGCGGGCTCGTGGCAGGGGTAGTTACGGGGAGGTGACGCTCGTGA  
 AGCATCGCGGGACGGCAAGCAGTATGTCATCAAAAAGCTGAACCTCCGGAATGCCTCCAGCCGGGAGCG  
 TCGAGCGGCAGAGCAGGAGGCTCAGCTCCTGTCTCAGTTGAAGCACCCCAACATTGTCACCTACAAAGAG  
 TCATGGGAGGGCGGAGACGGTCTGCTCTACATCGTCATGGGCTTCTGCGAAGGAGGCGATCTGTACCGGA  
 AGCTCAAGGAGCAGAAGGGGAGCTTCTGCCTGAGAGTCAGGTGGTGGAGTGGTTTGTCCAGATCGCCAT  
 GGCCTTGCACTTACATGAGAAGCACATCCTTCATCGAGATCTGAAAACCTCAGAATGTCTTCTTAACA  
 AGAACAAACATCATCAAAGTAGGTGACCTAGGCATTGCCCGAGTGTGGAGAATCACAGTGACATGGCGA  
 GCACCTCATTGGCACACCTATTACATGAGTCTGAGCTGTTCTCAACAAACCCTACAATAAGTC  
 GGATGTTTGGGCTTTGGGATGCTGCGTGTATGAAATGGCCACCCTGAAGCATGCTTTTAATGCAAAAAGAC  
 ATGAATTCCTTTAGTTTATCGGATTATTGAAGGAAAGTTGCCACCAATGCCAAAAGTTACAGTGGCGAGC  
 TGGCAGAGCTGATAAGAACCATGTTGAGCAGGAGACCTGAGGAGAGGCCCTCTGTGCGGAGCATCTGCG  
 GCAGCCCTACATAAAACACCACATCTCCTTGTCTTGGAGGCCACCAAGGCGAAAACCTCCAAAAATAAT  
 GTTAAAAACTGTGACTCCAGAGCCAAACCCGTTGCTGCTGTAGTTTCCAGAAAAGGAACCAAAATCATG  
 AAATGATTCCTACCAGCCACGCTCTTCTGAGGGCTCCGCTGTACATGCCACGGGTGAAGATAAATGTCT  
 GTCCCAAGAAAACCAGTGGACATTGGTCCCTTGAATCACCTGCTAGTCTCGAAGGCCACACTGGCAAA  
 CAAGACATGAACAGGACTGCAGAGTCGTGTGCCACAGTCAGTGGATAAAATCGATATCTTACCTGCAG  
 AAAGGAGGACTCAGCAAAAGATGGCACAGTTGAGGAGGGCCACCACAGCACGTGGATGCTTCTAATGA  
 AGTAGACCGTCAATGCAGTATTTCTCAAGAGAAGGAGAGGCTACAGGGCAACAGCAAGTCTAGTGATCAG  
 CCGGAAAAATCTCCTTCCAGATGGTCTCTGGTGGTGGTATGGGGAAGGGAATGAACTGGTGAAGCTGT  
 TGTACTCTCGGGTAAAGACCAAAAGCCACAGCAGGATCAAGTACTAGCGGGTGTATTCTAGAAGATCA  
 GGACAGCATCCACCAAGACTGCAGCCGCACAGCTCTGTATCTGAACCTTCTTTGTCCCGGCAGCGAAGG  
 CAGAGAAAAGGGAACAGACGAACCACGGTCGGGCAAAGAGCCAGCTCCAAGAATCACCCCTCGTCTTG  
 TGCCTTCTCACCTGATACTGGGAAAGCAGATATCATAAGTACACAGCAAAGTATGAAACCAAAAGTGG  
 ACCTGTGGCTAGGTCTGTGAATGGTTCAAGGTCTAGTTCGACAGCGTCATCAAAGGATCGGCCATTATCA  
 GCCAGAGAGAGGAGCAGCTAAAGCAGTCGAGGAAGAGATGCTCCCTCAGGCCCTGCAGTTCAGAGAA  
 CTCCAAGTTCAGTAGAGCCAGTAAACCACAGGAAGAAGCAACCCATCCCTGCCCAACGATTCTCTTC  
 TGACTGCAACATCACTCAGGTGAATCCACACTCCTGAGGGAAAAGAGACTGATCCATGGACTGTCT  
 GAGGATGAGTTAAGTTCTTCCACAAGCTCAACTGATAAATCAGATGGGGATTCCAGGGAGGGGAAAAGTC  
 ATACAAATGAAATGAGAGACTTGGTGCAGCTGATGACTCAGACTCTGAGGCTGGAAGCTAAAGAGAGCTG  
 TGAAGATCTTATGTACCAAAACCAGGGTCAGAGTTCAGACTTCATCGCAAGTATCGAGACACGCTGGTG  
 CTCCACGGCAAGGCTGCGGAAGAGGGGAGCCCCCTGTGTGGAGTTACCTCCAGGTATCACACCAGGTT  
 CTGAAAAGATCAGGAGAAATAGTTGAAGTCTTAAGAGCTGATGTGATCCAGGGCCTGGGGGTTTCTGCTTTT  
 AGAGCAGGTGTATGATCTTTTGGAGGAGGAAGATGAGTTGGAGAGAGAGGCACGATTACAGGAGCACATG  
 GGAGACAAGTATACAACCTACAGTGTAAAGCTCGCCAGTTGAAGTTTTTTGAAGAAAATGTGAGTTTT

**ACGCGT**ACGCGGCCGCTCGAGCAGAAACTCATCTCAGAAGAGGATCTGGCAGCAATGATATCCTGGATT  
 ACAAGGATGACGACGATAAGGTTTAA

**Protein Sequence:** >RR212438 representing NM\_001013134  
Red=Cloning site Green=Tags(s)

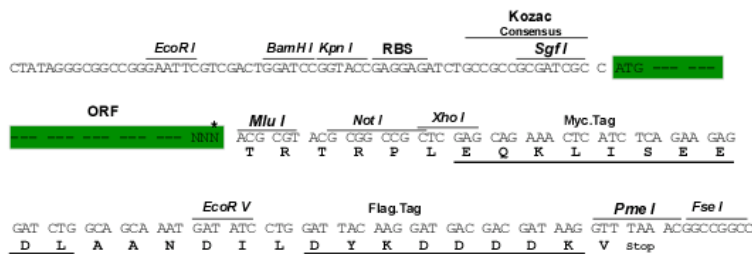
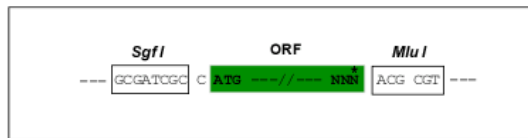
MPQAAYCYLRVVGGRGSYGEVTLVKHRRDGKQYVIKKLNLNRNASSRERRAAEQEAQLLSQLKHPNIVTYKE  
 SWEGGDGLLYIVMGFCEGGDLYRKLKEQKGQLLPESQVVEWFVQIAMALQYLHEKHILHRDLKTQNVFLT  
 RTNIIKVGDLGIARVLENHSDMASTLIGTPYYMPELFSNKPYNYKSDVWALGCCVYEMATLKHFNAKD  
 MNLSVYRIIEGKLPMPKVYSAEALERTMLSRPEERPSVRSILRQPYIKHHISLFLEATKAKTSKNN  
 VKNCDSDRAKPVAAVVSRKEEPNHEMIPYQPRSEGSVAVHATGEDKCLSQEKPVDIIGPLKSPASLEIGHTGK  
 QDMNRTAESCATVSRINIDILPAERRDSAKDGTVEEGRPOHVDASNEVDRQCSISQEKERLQGNSSDQ  
 PENLLPRWSSGGGDGEGNELVKLLYSSGKDQKPQQDQVTSGCILEDQDSIHPRLQPHSSVSEPSLSRQRR  
 QRKREQTNHGRAKSQLQESPPRLVPSHPDTGKADIIISTQQSDGNQSGPVARSVNGSRSSSTASSKDRPLS  
 ARERRRLKQSQEEMLPSPGPAVQRTPSSEVPVKPQEEDQPIPAQRFSSDCNITQVNPNTLLREKKRLIHGLS  
 EDELSSTSDTKSDGDSREGKSHNEMRDLVQLMTQTLRLEAKESCEDLHVPNPGSEFRLHRKYRDTLV  
 LHGKAAEEGPPCVLPPGITPGSEKIRRIVEVLRADVIQGLGVQLLEQVYDLEEEDELEREARLQEHM  
 GDKYTTYSVKARQLKFFEENVSF

TRTRPLEQKLISEEDLAANDILDYKDDDDKV

**Restriction Sites:** SgfI-MluI

**Cloning Scheme:**

Cloning sites used for ORF Shuttling:



\* The last codon before the Stop codon of the ORF

**ACCN:** NM\_001013134

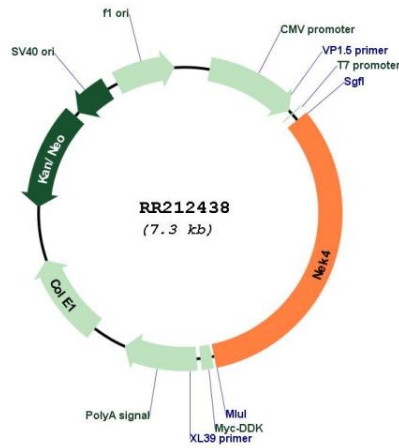
**ORF Size:** 2379 bp

**OTI Disclaimer:** The molecular sequence of this clone aligns with the gene accession number as a point of reference only. However, individual transcript sequences of the same gene can differ through naturally occurring variations (e.g. polymorphisms), each with its own valid existence. This clone is substantially in agreement with the reference, but a complete review of all prevailing variants is recommended prior to use. [More info](#)

**OTI Annotation:** This clone was engineered to express the complete ORF with an expression tag. Expression varies depending on the nature of the gene.

<b>Components:</b>	The ORF clone is ion-exchange column purified and shipped in a 2D barcoded Matrix tube containing 10ug of transfection-ready, dried plasmid DNA (reconstitute with 100 ul of water).
<b>Reconstitution Method:</b>	<ol style="list-style-type: none"> <li>1. Centrifuge at 5,000xg for 5min.</li> <li>2. Carefully open the tube and add 100ul of sterile water to dissolve the DNA.</li> <li>3. Close the tube and incubate for 10 minutes at room temperature.</li> <li>4. Briefly vortex the tube and then do a quick spin (less than 5000xg) to concentrate the liquid at the bottom.</li> <li>5. Store the suspended plasmid at -20°C. The DNA is stable for at least one year from date of shipping when stored at -20°C.</li> </ol>
<b>RefSeq:</b>	<u>NM_001013134.2</u> , <u>NP_001013152.2</u>
<b>RefSeq Size:</b>	2722 bp
<b>RefSeq ORF:</b>	2382 bp
<b>Locus ID:</b>	306252
<b>Cytogenetics:</b>	16p16
<b>MW:</b>	89.2 kDa

**Product images:**



Circular map for RR212438