

## Product datasheet for **RR212411**

### **Kcnd3 (NM\_031739) Rat Tagged ORF Clone**

#### **Product data:**

Product Type:	Expression Plasmids
Product Name:	Kcnd3 (NM_031739) Rat Tagged ORF Clone
Tag:	Myc-DDK
Symbol:	Kcnd3
Synonyms:	Kv4.3
Vector:	pCMV6-Entry (PS100001)
E. coli Selection:	Kanamycin (25 ug/mL)
Cell Selection:	Neomycin



[View online »](#)

**ORF Nucleotide Sequence:**

>RR212411 representing NM\_031739  
 Red=Cloning site Blue=ORF Green=Tags(s)

TTTTGTAATACGACTCACTATAGGGCGGCCGGGAATTCGTCGACTGGATCCGGTACCGAGGAGATCTGCC  
 GCC**CGCATCGCC**

ATGGCGCAGGAGTTGCAGCCTGGCTGCCTTTTGCCCGGCTGCGGCCATTGGGTGGATGCCAGTGGCCA  
 ACTGCCCCATGCCCTAGCTCCAGCCGACAAGAACAAGCGGCAAGATGAGCTAATCGTCCTCAACGTGAG  
 TGGCCGTCGGTCCAGACCTGGAGGACCACTCTGGAGCGCTATCCCGACACCCTGCTGGGTAGCACAGAG  
 AAGGAGTCTTCTTCAACGAGGACACCAAGGAGTACTTCTTTGACCGTGACCCGGAAGTGTCCGTTGTG  
 TGCTCAACTTCTACCGCACTGGGAAGCTGCACTACCCACGCTATGAATGCATCTCTGCCTACGACGATGA  
 GCTGGCCTTCTATGGCATCTCCCTGAGATCATTGGCGACTGCTGCTATGAGGAGTACAAAGACCGCAAG  
 CGGGAGAACGCTGAGCGGCTCATGGATGACAATGAGTCTGAGAACAACCAGGAGTCCATGCCCTCCCTCA  
 GCTTCCGCCAGACCATGTGGCGGCCTTCGAGAACCACACACCAGCACCCCTGGCACTGGTCTTCTACTA  
 CGTGACAGGCTTCTTATTGCGGTCTCGGTGATCACCAACGTGGTGGAGACGGTCCATGCGGCACGGTG  
 CCTGGGAGCAAGAACTGCCGTGTGGAGAGCGCTACTCCGTGGCTTTCTTCTGCCTGGCACTGCGTGTG  
 TCATGATCTTACGGTGGAGTACCTCCTCCGACTCTTCGCGGCACCCAGCAGGTACCGCTTCATCCGCAG  
 TGTGATGAGCATCATCGACGTGGTGGCCATCATGCCCTATTACATTGGCCTGGTTCATGACCAACAACGAG  
 GACGTGTCCGGGCATTTGTACACTCCGGGTCTTCCGCGTCTTCCAGGATCTTCAAGTCTCCCGACATT  
 CCCAGGGCCTACGGATCCTAGGCTACACCCTGAAGAGCTGTGCCTCAGAAGTGGCTTTCTTCTTCTC  
 CCTCACCATGGCCATCATCATCTTTGCCACTGTGATGTTTTATGCTGAGAAGGGCTCCTCCGCCAGCAAG  
 TTCACAAGCATCCCTGCGTCTTCTGGTACACCATAGTACCATGACAACACTGGGGTATGGAGACATGG  
 TGCTAAGACAATTGCTGGGAAGATATTTGGCTCCATCTGCTCCCTAAGCGGCGTCTTGGTATTGCTCT  
 GCCAGTCCCGTCATAGTCTCCAACCTTTAGCAGGATCTACCATCAGAACCAGAGAGCAGATAAACCGCAGG  
 GCACAGAAGAAGGCCCGCTTGGCAGAATCCGTGTGGCCAAAACAGGGAGCTCCAATGCCTACCTGCACA  
 GCAAGCGCAATGGACTCCTCAATGAAGCTCTGGAGCTGACCGGCACCCAGAAAGAGGAGCACATGGGCAA  
 GACCACGTCACTCATCGAGAGCCAGCACCACCCTGCTACACTGCTTAGAAAAGACCACTAACCACGAG  
 TTTATTGATGAGCAGATGTTTGGAGCAACTGCATGGAGAGCTCAATGCAGAAGTACCCATCCACCAGAA  
 GCCCTTCTGTCCAGCCACTCGGGCCTACCACCCTGCTGCTCCCGCGTAGCAAGAAGACCACGCA  
 CCTGCCAACTCCAACCTGCCGGCCACCCGCTGCGCAGCATGCAAGAGCTCAGCACCATCCACATCCAG  
 GGCAGTGAGCAGCCCTCCCTCACCCTAGTCCGCTCCAGCCTTAATTTGAAAGCAGACGACGGACTGAGAC  
 CAAACTGCAAAACACAAGACCAAGAGCAGCCAGAGGCCGAGTCGTACATGCAAAACAGGAAGAAATTAT  
 AACACTGTGTATT

**ACGCGT**ACGCGGCCGCTCGAGCAGAAACTCATCTCAGAAGAGGATCTGGCAGCAAATGATATCCTGGATT  
 ACAAGGATGACGACGATAAGGTTTAA

**Protein Sequence:**

>RR212411 representing NM\_031739  
 Red=Cloning site Green=Tags(s)

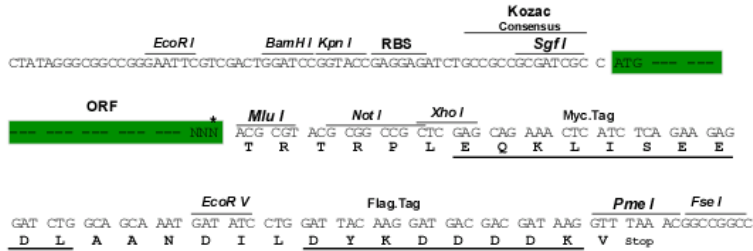
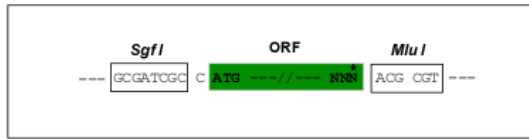
MAAGVAAWLPFARAAAIGWMPVANCPMPLAPADKNKRQDELIVLNVSGRRFQWRTTLERYPDTLLGST  
 KEFFFNEDTKEYFFDRDPEVFRVLFNFYRTGKLYHPRYECISAYDDELAFYGLPEIIGDCCYEEYKDRK  
 RENAERLMDNESENQESMPSLSFRQTMWRAFENPHTSTLALVFYYVTGFFIAVSVITNVVETVPCGT  
 PGSKELPCGERYSVAFFCLDTACVMIFTVEYLLRLFAAPSRYRFIRSVMSIIDVVAIMPYYIGLVMTNNE  
 DVSGAFVTLRVFRVFRIFKFSRHSQGLRILGYTLKSCASELGFLLFSLTMAIIIFATVMFYAEKSSASK  
 FTSIPASFWYITVMTTLGYGDMVPKTIAGKIFGSI CSLSGVLVIALPVPVIVSNFSRIYHQNRADKRR  
 AQKARLARIRVAKTGSSNAYLHSCRNGLLNEALELGTPEEEHMGKTTSLIESQHHLLHCKLEKTTNHE  
 FIDEQMFEQNCMESSMQNYPSTRSPSLSSHSLTTTCCSRRSKTTHLPNSNLPATRLRSMQELSTIHIQ  
 GSEQPSLTSRSSLNLKADDGLRPNCKTQDQEQPRGRVVTCKQEEIITLCI

**TRTRPLEQKLISEEDLAANDILDYKDDDDKV**

Restriction Sites: SgfI-MluI

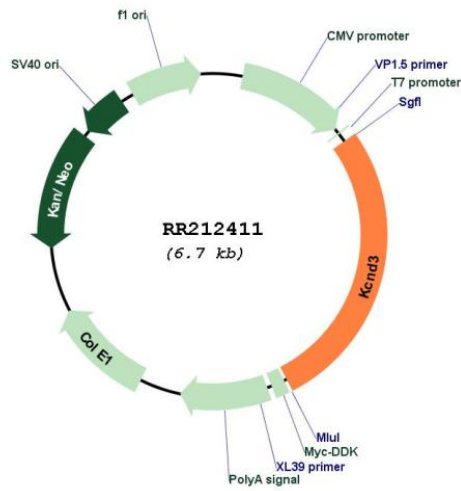
Cloning Scheme:

Cloning sites used for ORF Shuttling:



\* The last codon before the Stop codon of the ORF

Plasmid Map:



ACCN: NM\_031739

ORF Size: 1833 bp

<b>OTI Disclaimer:</b>	The molecular sequence of this clone aligns with the gene accession number as a point of reference only. However, individual transcript sequences of the same gene can differ through naturally occurring variations (e.g. polymorphisms), each with its own valid existence. This clone is substantially in agreement with the reference, but a complete review of all prevailing variants is recommended prior to use. <a href="#">More info</a>
<b>OTI Annotation:</b>	This clone was engineered to express the complete ORF with an expression tag. Expression varies depending on the nature of the gene.
<b>Components:</b>	The ORF clone is ion-exchange column purified and shipped in a 2D barcoded Matrix tube containing 10ug of transfection-ready, dried plasmid DNA (reconstitute with 100 ul of water).
<b>Reconstitution Method:</b>	<ol style="list-style-type: none"><li>1. Centrifuge at 5,000xg for 5min.</li><li>2. Carefully open the tube and add 100ul of sterile water to dissolve the DNA.</li><li>3. Close the tube and incubate for 10 minutes at room temperature.</li><li>4. Briefly vortex the tube and then do a quick spin (less than 5000xg) to concentrate the liquid at the bottom.</li><li>5. Store the suspended plasmid at -20°C. The DNA is stable for at least one year from date of shipping when stored at -20°C.</li></ol>
<b>RefSeq:</b>	<a href="#">NM_031739.3</a> , <a href="#">NP_113927.2</a>
<b>RefSeq Size:</b>	6267 bp
<b>RefSeq ORF:</b>	1836 bp
<b>Locus ID:</b>	65195
<b>UniProt ID:</b>	<a href="#">Q62897</a>
<b>Cytogenetics:</b>	2q34
<b>MW:</b>	69.3 kDa
<b>Gene Summary:</b>	voltage-gated K <sup>+</sup> channel that generates an A type K <sup>+</sup> current [RGD, Feb 2006]