

Product datasheet for **RR212352**

Slc26a2 (NM_057127) Rat Tagged ORF Clone

Product data:

Product Type:	Expression Plasmids
Product Name:	Slc26a2 (NM_057127) Rat Tagged ORF Clone
Tag:	Myc-DDK
Symbol:	Slc26a2
Synonyms:	Dtdst
Vector:	pCMV6-Entry (PS100001)
E. coli Selection:	Kanamycin (25 ug/mL)
Cell Selection:	Neomycin



[View online »](#)

ORF Nucleotide
Sequence:

>RR212352 representing NM_057127
Red=Cloning site Blue=ORF Green=Tags(s)

TTTTGTAATACGACTCACTATAGGGCGGCCGGAATTCGTCGACTGGATCCGGTACCGAGGAGATCTGCC
GCC**CGCATCGCC**

ATGTCTTCAGAAAATAAAGAGCAGCATAATCTTTACCAAGGACTTACCTGAAGAAGCCTATGGCTTCC
CACCTGAGCTCCCTCGGGGCTCAAAGAGGATCAAGCACTGACTTAAGGCAGTTTGAGCCAGTGATCG
GAGAAGAGCTTTTCGTAGGATCCACATGGAACCCATGAGAAACCAGATACTAACATCAGACAGCTTGTC
ATGAGAAAGCTTCAGAAGAGTTGCCAGTGAATGCAACCAAAATCAGAAATAGGATTTTTGATTTTTTC
CTGTTTTGAGGTGGCTCCAAAATATGATCTGAAGAAAAACATTTTAGGTGACATGATGTCTGGCCTGAT
TGTGGGTATATTGTTGGTGCCCACTATTGCTTACTCCCTGTTGGCTGGCCAGGAACCTATCTATGGT
CTGTACACATCATTTTTTCCAGCATTATTTACTTCTGTTTGGTACCTCCCGCCACATCTCTGTGGCA
TTTTTGGAACTGTGCCTTATGATTGGTGAGGTAGTTGACCGAGAATACATAAAGCCTGCCCTGACAT
TGATACTACATCATCTTCCATAGCAATGTTTTCAAATGGATGTGTGGTAGTAAACCATACATTAGACGGA
CTCTGTGACAAAAGCTGTTATGCAATTAATAATGGCAGCACTGTGACATTCATGGCTGGAGTTTATCAGG
TAGCCATGGGCTTCTTCAAGTGGGCTTTGTGTCTGTCTACCTCTCAGATGCCTTGTGAGCGGGTTTGT
CACTGGTGCTCCTTACCATCCTCACGCTCAGGCCAAGTACCTCCTGGGGCTGAGCCTTCTCGGAGC
AATGGTGTAGGCTCAGTCATTACTACCTGGATCCACATCTTCAGAAATATTCATAAGACCAACATCTGTG
ACCTCATCACCAGCCTTTTGTGTCTCCTGGTCTTGTGCCAACCAAGAAGTCAACGAATACTTCAAGTC
CAAGTCCCGGCACCAATCCAAGTGAAGTCAATGTCGTTGTGGCAGCCACATTGGCTTCTATTTTGGC
AAACTCAATGAGAATACAATTCAGTATTGCCGGGCAAAATCCACCGGGTTTATGCCACCCCAAGCGC
CAGACTGGAGCCTCATTCTAATGTGGCTGTTGATGCCATAGCTATTTCTATCATTGGTTTGTATCAG
TGTATCATTCTGAGATGTTTGGCAAGAAACATGGCTACACGGTGAAAGCCAATCAGGAAATGTATGCC
ATTGGCTTTTGAATATCATACCCTCCTTCTTCCACTGCATAACTACTAGTGCCGCCCTTGCAGAGACAC
TGGTAAAGAGTCAACAGGTTGCCAGACCAACTGTCCGCTATAGTGACATCCCTCGTTCTTCTGTGGT
CCTTCTGCTAATAGTCCCTTATTCTATTCCCTCAGAAATGTGTCTTGGTGTGATCACCATTGTAAT
CTCCGGGTGCACTTCTGAAATTTAGAGACCTGCCAAAGATGTGGAGGCTCAGCAGAATGGACACAGTTA
TCTGGTTTGTGACGATGCTGTCTCTGCTGTTAAGCACTGAAATAGGCCTGCTCGTTGGGTTTGT
TTCAATGTTTGTGTGATTCTCCGTAAGTCAAGATTTCACTGCTTGGTTTGAAGAAGAATCT
GAAATCTTCGAGTCCATCTCCACTTACAAGAACCTTCGGAGTAAAGTCAAGGATCAAGTTTTCCGCTTCA
TAGCCCTCTCTACTACATAAACAAGAAATGCTTTAAATCAGCTTTGTACAAGAAAACGCTAAACCCAGT
CTTGGTAAAAGCAGCCTGAAAAAGGCAGCAAAAAGGAAACTGAAAGAGGAAACAGTGACTTTCCATGGG
GACCCGGATGAAGTCTCAATGCAGCTTTCCCATGATCCCTTGGAGCTGCACACCGTTGTGATTGACTGTA
GTGCAATACAGTTTTTGGATACAGCAGGGATCCACACACTGAAAGAAGTTCGCCGGGATTATGAAGCCAT
TGGTATCCAGTTTTACTGGCTCAGTGCATCCTTCTGTGAGGGATTCTTAGCCAAAGGAGAATATTGC
AAAAAGGAAGAAGAAAATCTTCTCTTCTACAGTTTGTCTGAAGCAGTAGCTTTTGCAGAAGAGTCTCAGA
AGGAGAAAGGAGTGTGTGGTCAATGGTTTGAAGTCTTCTGGTGAC

ACGCGTACGCGGCGCTCGAGCAGAACTCATCTCAGAAGAGGATCTGGCAGCAAATGATATCCTGGATT
ACAAGGATGACGACGATAAGGTTTAA

Protein Sequence: >RR212352 representing NM_057127
 Red=Cloning site Green=Tags(s)

MSENKEQHNLSPRDLPEEAYGFPELPLGAQRGSSTDLRQFEPDRRRFRRIHMEHEKPDNTNIRQLV
 MRKLQKSCQCNATKIRNRFDFFPVLRWLPKYDLKKNILGDMMSGLIVGILLVPQSIAYSLLAGQEPIYG
 LYTSFFASIIYFLFGTSRHISVGIFFILCLMIGEVDRELHKACPDIDTSSSIAMFNSGCVVNHLDG
 LCDKSCYAIIKIGSTVTFMAGVYQVAMGFFQVGFVSVYLSALLSGFVTGASFTILT SQAKYLLGLSLPRS
 NGVGSVITTWIHFIRNIHKTNICDLITSLCLLVLPVKELNEYFKSKLPAPIPELIVVVAATLASHFG
 KLNENYNSSIAGQIPTGFMPQAPDWSLIPNVAVDIAIAISIIIGFAITVSLSEMF AKKHGYTVKANQEMYA
 IGFCNIIPSFFHCITTSAAALAKTLVKESTGCQTQLSAIVTSLVLLVLLLIAPLFYSLQKCVLGVITIVN
 LRGALLKFRDLPKMWRLSRMDTVIWFVTMLSSALLSTEIGLLVGVCFSMFCVILRTQMPKISLLGLEEES
 EIFESISTYKNLRKSGIKVFRFIAPLYINKECFKSALYKKTLPVVKAAWKAAKRKLKEETVTFHG
 DPDEVSMQLSHDPLELHTVVIDCSAIQFLDTAGIHTLKEVRRDYEAIQIVLLAQCNPSVRDSLAKGEYC
 KKEEENLLFYSLSEAVAF AEE SQKEKGVCVVNGLSLSGD

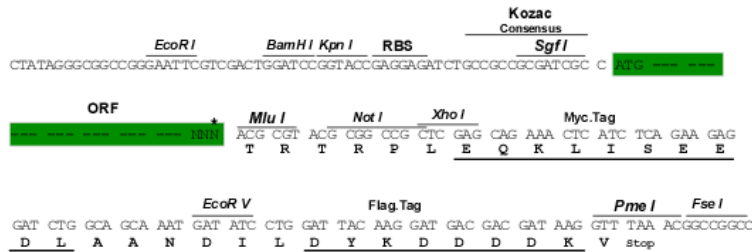
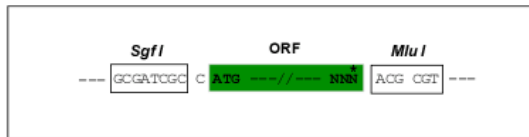
TRTRPLEQKLI SEEDLAANDILDYKDDDDKV

Restriction Sites:

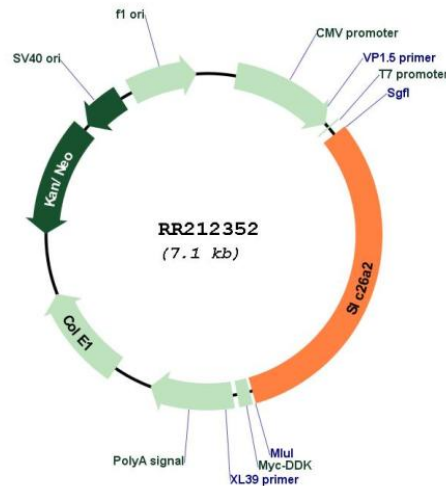
Sgfl-MluI

Cloning Scheme:

Cloning sites used for ORF Shuttling:



* The last codon before the Stop codon of the ORF

Plasmid Map:


ACCN: NM_057127

ORF Size: 2217 bp

OTI Disclaimer: The molecular sequence of this clone aligns with the gene accession number as a point of reference only. However, individual transcript sequences of the same gene can differ through naturally occurring variations (e.g. polymorphisms), each with its own valid existence. This clone is substantially in agreement with the reference, but a complete review of all prevailing variants is recommended prior to use. [More info](#)

OTI Annotation: This clone was engineered to express the complete ORF with an expression tag. Expression varies depending on the nature of the gene.

Components: The ORF clone is ion-exchange column purified and shipped in a 2D barcoded Matrix tube containing 10ug of transfection-ready, dried plasmid DNA (reconstitute with 100 ul of water).

Reconstitution Method:

1. Centrifuge at 5,000xg for 5min.
2. Carefully open the tube and add 100ul of sterile water to dissolve the DNA.
3. Close the tube and incubate for 10 minutes at room temperature.
4. Briefly vortex the tube and then do a quick spin (less than 5000xg) to concentrate the liquid at the bottom.
5. Store the suspended plasmid at -20°C. The DNA is stable for at least one year from date of shipping when stored at -20°C.

RefSeq: [NM_057127.1](#), [NP_476468.1](#)

RefSeq Size: 2877 bp

RefSeq ORF: 2220 bp

Locus ID: 117267

UniProt ID: [O70531](#)
Cytogenetics: 18q12.1
MW: 82 kDa
Gene Summary: sulfate transporter; may be involved in endochondral bone formation [RGD, Feb 2006]