

Product datasheet for **RR212325**

Kcnv2 (NM_001106370) Rat Tagged ORF Clone

Product data:

Product Type:	Expression Plasmids
Product Name:	Kcnv2 (NM_001106370) Rat Tagged ORF Clone
Tag:	Myc-DDK
Symbol:	Kcnv2
Vector:	pCMV6-Entry (PS100001)
E. coli Selection:	Kanamycin (25 ug/mL)
Cell Selection:	Neomycin



[View online »](#)

ORF Nucleotide Sequence:

>RR212325 representing NM_001106370
 Red=Cloning site Blue=ORF Green=Tags(s)

TTTTGTAATACGACTCACTATAGGGCGGCCGGAATTCGTCGACTGGATCCGGTACCGAGGAGATCTGCC
 GCC**CGGATCGCC**

ATGCTGAAACAGAGCACCAGAGGAGATGGTCCTTGAGCTACAAGCTCTGGAATACCTCAGAGACTGAGG
 ATGTGCCCAACACTGGAAGCAACCAACACCGTAAGAGCATCTGCTCCATGGGAGCCCGACTGGCTCTCA
 GGCCAGCATCGCACACAGTGGACCGAGGGCAACTACAATTACTACATCGAGGAAGATGAGGACTGCGGG
 GAGGAGGAGGATTGGAAGGATGATCTTGCTGAAGAGAACCAGAAGCCCGAGGGCCCCCAGCTCCACTGG
 ATGGCCACACTGACACTCCAACCCAGCTGTCTACGCTAAAAGTAAACGTAGGCGGCCACAGCTATCAGCT
 GGAATGCTGTGAGCTGGCAACTACCCAAAACCGCCTGGTTCGCTGGTACCTCCACCAGCCGCAAC
 TGCCAGCTGGGCCTGTGCGATGACTACGAGGCAAAGACTGACGAGTACTTCTTTGACCGTACCCGGCGG
 TCTTCCAGCTCATCTACAACCTTACACATCAGGGGTGTTGCTGGTGCAGACGAGCTGTGTCCACGAAG
 CTTCTGGAGGAGCTGGGCTACTGGGGCTGAGGCTCAAGTACAGCCACGCTGTGTGCGATCTGCTTC
 GAGGAGCCGAGGGACAACTGAGCGAGCAACTGAAGATCCAAAGGGAGCTGCGTGCAGGGCGAGGCCG
 AGGAGGCCGAGGAACCTTTTCGGACATGCGCTTCTATGGACCACAGCGTCAGCGCCTCTGGAACCTTAT
 GGAGAAGCCCTTCTTCCGTAGCCGCCAAGGCCATGGGGTGGCCTCCAATCTTTCGTCCTCATCTCC
 GTAGTGGCCCTGGCGCTCAACACGGTGGAGGAGATGCAGCACCAGGCGGAGCAGGGCACAGGTGGTGGGG
 ACCCCAGGCCATATTGGAGCACGTGGAGATGCTGTGCGTGGCTTTCTTCACTCTGGAGTTCTGCTGCG
 CCTCGCTCCACCCCAACCTGCGGCGCTTTCACGCAGCGCCCTCAACCTGGTGGACCTGGTGGCCATT
 CTGCTTTCTACCTGCAGCTGCTGCTGGAGTGTTCACGAGCGAGGACCAGAGGCATGGCAAGGGCTCCC
 CACGGAAACACGACCTGGAGACCTGGGCGGTGGGCAAGGTGGGCCAGGTCTGCGCATCATGCGCT
 CATGCGCATCTTCCGCATCCTCAAGCTAGCCCGCCACTCCACAGGTTTGGGGCCTTCGGCTTACGCTG
 CGCCAGTGTACACAGGTTGGCTGCCTGATGCTCTTCACTATGGGCATCTTTTCTTCTCTGACG
 CGGTCTACTCGGTGGAGCACGACGTGCCTGGTACCAACTTACCAGCATCCTCCATGCCTGGTGGTGGG
 TGCGGTAAGCATCTTACCGTGGGCTATGGAGACATGTATCCAGAGACCCACTGGGCAGGCTTTTTGCC
 TTCCTCTGCATCGCTTTGGGATTATTCTCAACGGGATGCCATTTCCATCCTCTACAACAAGTTCTCCG
 ATTACTACAGCAAGCTCAAAGCTTACGAGTACCCGCCATCCGTAGGGAACGGGAAAAGTGAACTTTAT
 GCAGAGAGCCACGAAGAAAATGGCTGAATGTTTATCTGGAAGTATGCACAGTCCGCCACAAGGCAAGAG
 AAT

ACGCGTACGCGGCCGCTCGAGCAGAAACTCATCTCAGAAGAGGATCTGGCAGCAAATGATATCCTGGATT
 ACAAGGATGACGACGATAAGGTTTAA

Protein Sequence:

>RR212325 representing NM_001106370
 Red=Cloning site Green=Tags(s)

MLKQSTERRWSLSYKLWNTSETEDVPNTGSNQHRKSICSMGARTGSQASIAQWTEGNYNYIEEDEDG
 EEEDWKDDLAENQKPEGPPAPLDGHTDPTQLSTLKVNVGGHSYQLECCELANYPKTRLGRLVTSTSRN
 CQLGLCDDYEAKTDEYFFDRDPAVFQLIYNFYTSVLLVRDELCPRSFLEELGYWGVRLKYTPRCCRICF
 EERRDELSEQLKIQRELRAQAQAEAEELFRDMRFYGPQRQRLWNLMEKPFSSVAAMGVASNLVFLIS
 VVALALNTVEEMQHQAEEQGTGGDPRPILEHVEMLCVAFFTFLEFLRLASTPNLRRFARSALNLDLVAI
 LPFYQLLLECFITSEDQRHGKGSPREHDLETVGRVGVGVQLRIMRLMIRIFRILKLARHSTGLRAFGFTL
 RQCYQVQVGLMLFITMGIFSFAAVYSVEHDVPGTNTSILHAWWAAVSIISTVGYGDMYPETHLGRIFA
 FLCIAFGIILNGMPISILYNKFSYYSKLYKAYEYTAIRRERGVNFMQRATKKMAECLSGSNAQSATRQE
 N

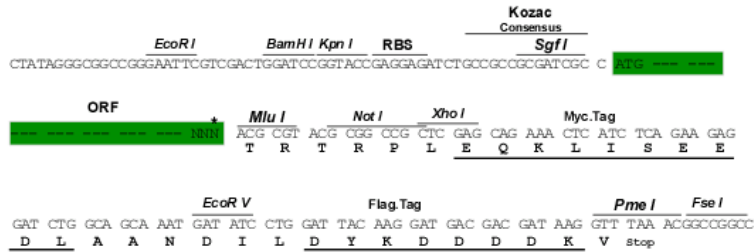
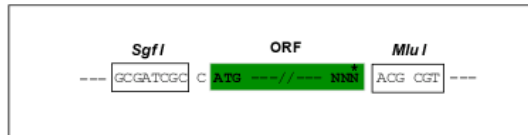
TRTRPLEQKLISEEDLAANDILDYKDDDDKV

Restriction Sites:

Sgfl-MluI

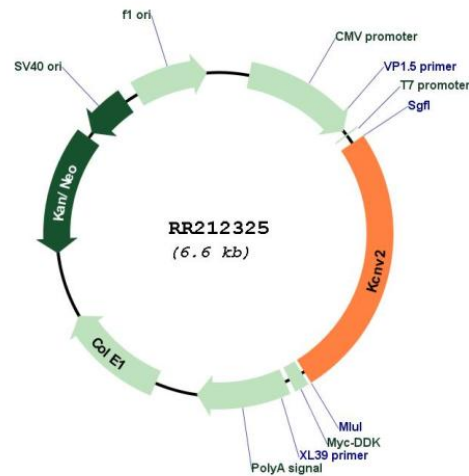
Cloning Scheme:

Cloning sites used for ORF Shuttling:



* The last codon before the Stop codon of the ORF

Plasmid Map:



ACCN:

NM_001106370

ORF Size:	1683 bp
OTI Disclaimer:	The molecular sequence of this clone aligns with the gene accession number as a point of reference only. However, individual transcript sequences of the same gene can differ through naturally occurring variations (e.g. polymorphisms), each with its own valid existence. This clone is substantially in agreement with the reference, but a complete review of all prevailing variants is recommended prior to use. More info
OTI Annotation:	This clone was engineered to express the complete ORF with an expression tag. Expression varies depending on the nature of the gene.
Components:	The ORF clone is ion-exchange column purified and shipped in a 2D barcoded Matrix tube containing 10ug of transfection-ready, dried plasmid DNA (reconstitute with 100 ul of water).
Reconstitution Method:	<ol style="list-style-type: none">1. Centrifuge at 5,000xg for 5min.2. Carefully open the tube and add 100ul of sterile water to dissolve the DNA.3. Close the tube and incubate for 10 minutes at room temperature.4. Briefly vortex the tube and then do a quick spin (less than 5000xg) to concentrate the liquid at the bottom.5. Store the suspended plasmid at -20°C. The DNA is stable for at least one year from date of shipping when stored at -20°C.
RefSeq:	NM_001106370.1 , NP_001099840.1
RefSeq Size:	5201 bp
RefSeq ORF:	1686 bp
Locus ID:	294065
Cytogenetics:	1q52
MW:	64.1 kDa