

Product datasheet for **RR212309**

Gpr139 (NM_001024241) Rat Tagged ORF Clone

Product data:

Product Type: Expression Plasmids
 Product Name: Gpr139 (NM_001024241) Rat Tagged ORF Clone
 Tag: Myc-DDK
 Symbol: Gpr139
 Mammalian Cell Selection: Neomycin
 Vector: pCMV6-Entry (PS100001)
 E. coli Selection: Kanamycin (25 ug/mL)
 ORF Nucleotide Sequence: >RR212309 representing NM_001024241
 Red=Cloning site Blue=ORF Green=Tags(s)

TTTTGTAATACGACTCACTATAGGGCGGCCGGAATTCGTCGACTGGATCCGGTACCGAGGAGATCTGCC
 GCC**CGATCGCC**

ATGGAGCACACGCACGCCACCTCGCTGCGAATAGCTCAGCTTGGCGCTTGGGCTTCGTGCCGGTGGTCT
 ACTACAGCTTCTTGTGTGCCTCGGGTTACCAGCAAATATCTTGACAGTCATCATCCTCTCAACTGGT
 AGCCAGAAGACAGAAGTCTCTACAATATCTTGGCACTTGTGTGCCGACATCTTGGTCTCTTT
 TTCATCGTCTTTGTGGATTTCTTGTAGAAGACTTCATTTGACCATGCAGATGCCTCCGATCCCTGACA
 AGATCATAGAAGTGTAGAGTTCTCTCCATCCACACTTCTATTTGGATTACAGTCCCCTAACAGTTGA
 TAGGTATATCGCAGTCTGTCACCCACTCAAATACCACACAGTTTCTACCCAGCCAGGACCCGAAAGTC
 ATTCTGAGTGTTATATTACCTGCTTCTGACTAGCATCCCTACTACTGGTGGCCTAACATCTGGACTG
 AAGACTACATCAGTACCTCCATGCATCATGTCCTTGTCTGGATCCACTGCTTACCCTGTACCTGGTGCC
 CTGCTCCATCTTCTCATCTTGAACCTCAATCATTGTGTACAAGCTTAGGAGAAAGAGTAATTTCCGCCTC
 CGTGGCTATTCCACTGGCAAGACTGCCATCTGTTTACCATCACCTCCATCTTTGCTACCCTCTGGG
 CCCCCGCATCATCATGATTCTCTACCACCTCTACGGAGACCCATCCAGAACCCTTGGCTGGTCCACAT
 TATGTTGGATGTTGCCAACATGCTGGCTCTTCTGAACACAGCCATCAACTTCTTCTCTACTGCTTCATC
 AGCAAGCGCTTCCGTACCATGGCAGCTGTACTCAAGGCCTTGTCAAGTGCCAGAAGCAGCCTGTAC
 AGTTCTACACCAACCATAACTTTTCCATAACAAGTAGCCCTGGATCTCACCCAGCAAACCTCACACTGCAT
 CAAAATGTTGGTGTACCAGTATGACAAACATGGGAAGCCTATAAAAAGTATCCCCGAAAATGTTGGTGTGA
 CCAGTATGACAAACATGGGAAGCCTATAAAAAGTATCCCCG

ACGCGTACGCGGCCGCTCGAGCAGAAACTCATCTCAGAAGAGGATCTGGCAGCAAATGATATCCTGGATT
 ACAAGGATGACGACGATAAGGTTTAA



[View online »](#)

Protein Sequence: >RR212309 representing NM_001024241
Red=Cloning site Green=Tags(s)

MEHTHAHLAANSSACGLGFVPVYYSFLLCLGLPANILTVIILSQLVARRQKSSYNYLLALAAADILVLF
 FIVFVDFLLEDFILTMQMPPIDPKIEVLEFSSIHSTIWIWVPLTVDRYIAVCHPLKYHTVSYPARTRKV
 ILSVYITCFLTSIPYYWPNWIWEDYISTSMHHVLVWIHCFTVYLVPCSIFFILNSIIVYKLRKSNFRL
 RGYSTGKTTAILFTITSIFATLWAPRIIMILYHLYGAPIQNPWL VHIMLDVANMLALLNTAINFFLYCFI
 SKRFRTMAAATLKALFKCQKQPVOFYTNHNF SITSSPWISPANSHCIKMLVYQYDKHGKPIKVSPOQNVGV
 PV*QTWEAYKSIP

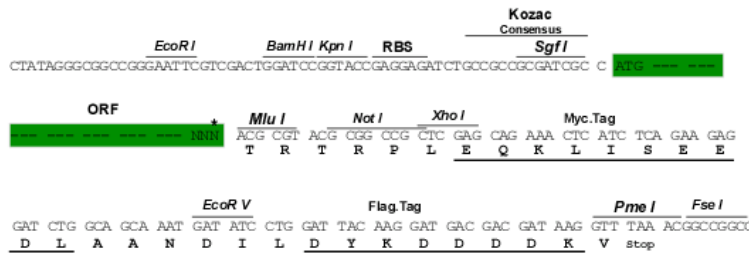
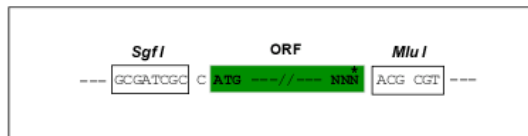
TRTRPLEQKLISEEDLAANDILDYKDDDDKV

Chromatograms: https://cdn.origene.com/chromatograms/ja1672_c01.zip

Restriction Sites: SgfI-MluI

Cloning Scheme:

Cloning sites used for ORF Shuttling:



* The last codon before the Stop codon of the ORF

ACCN: NM_001024241

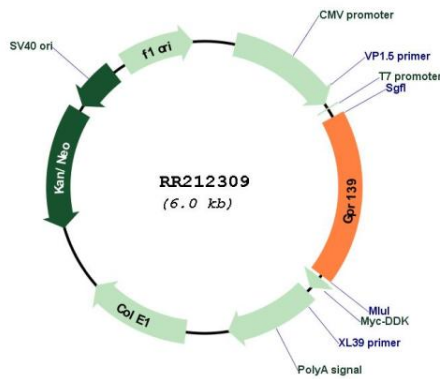
ORF Size: 1035 bp

OTI Disclaimer: Due to the inherent nature of this plasmid, standard methods to replicate additional amounts of DNA in E. coli are highly likely to result in mutations and/or rearrangements. Therefore, OriGene does not guarantee the capability to replicate this plasmid DNA. Additional amounts of DNA can be purchased from OriGene with batch-specific, full-sequence verification at a reduced cost. Please contact our customer care team at custsupport@origene.com or by calling 301.340.3188 option 3 for pricing and delivery.

The molecular sequence of this clone aligns with the gene accession number as a point of reference only. However, individual transcript sequences of the same gene can differ through naturally occurring variations (e.g. polymorphisms), each with its own valid existence. This clone is substantially in agreement with the reference, but a complete review of all prevailing variants is recommended prior to use. [More info](#)

- OTI Annotation:** This clone was engineered to express the complete ORF with an expression tag. Expression varies depending on the nature of the gene.
- Components:** The ORF clone is ion-exchange column purified and shipped in a 2D barcoded Matrix tube containing 10ug of transfection-ready, dried plasmid DNA (reconstitute with 100 ul of water).
- Reconstitution Method:**
1. Centrifuge at 5,000xg for 5min.
 2. Carefully open the tube and add 100ul of sterile water to dissolve the DNA.
 3. Close the tube and incubate for 10 minutes at room temperature.
 4. Briefly vortex the tube and then do a quick spin (less than 5000xg) to concentrate the liquid at the bottom.
 5. Store the suspended plasmid at -20°C. The DNA is stable for at least one year from date of shipping when stored at -20°C.
- RefSeq Size:** 1038 bp
- RefSeq ORF:** 1038 bp
- Locus ID:** 293545
- UniProt ID:** [POCOW8](#)
- Cytogenetics:** 1q35
- MW:** 39.7 kDa
- Gene Summary:** Orphan receptor. Seems to act through a G(q/11)-mediated pathway.[UniProtKB/Swiss-Prot Function]

Product images:



Circular map for RR212309