

Product datasheet for RR212285

Col1a1 (NM_053304) Rat Tagged ORF Clone

Product data:

Product Type:	Expression Plasmids
Product Name:	Col1a1 (NM_053304) Rat Tagged ORF Clone
Tag:	Myc-DDK
Symbol:	Col1a1
Synonyms:	COLIA1
Vector:	pCMV6-Entry (PS100001)
E. coli Selection:	Kanamycin (25 ug/mL)
Cell Selection:	Neomycin
ORF Nucleotide Sequence:	>RR212285 representing NM_053304 Red=Cloning site Blue=ORF Green=Tags(s)

TTTTGTAATACGACTCACTATAGGGCGCCGGGAATTCGTCGACTGGATCCGGTACCGAGGAGATCTGCC
GCC**CGGATCGCC**

ATGTTTCAGCTTTGTGGACCTCCGGCTCCTGCTCCTTTAGGGGCCACTGCCCTCCTGACGCATGGCCAAG
AAGACATCCCTGAAGTCAGCTGCATACACAATGGCCTAAGGGTCCCTAATGGTGAGACGTGGAAACCTGA
TGTATGCTTGATCTGTATCTGCCACAATGGCACGGCTGTGTGCGATGGCGTGCTATGCAAAGAAGACTTG
GACTGTCCCAACCCCAAAAACGGGAGGGCGAGTGTCTCTTTCTGCCAGAAGAATATGTATACCCAG
ACGCAGAAGTCATAGGAGTCGAGGGACCAAGGGAGACCTGGCCCCAAGGCCACGGGGACCTGTTGG
CCCCCTGGACAAGATGGCATCCCTGGACAGCCTGGACTTCTGGTCTCCTGGTCCCCCGGCCCCCC
GGACCCCTGGTCTTGGAGGAACTTTGCTTCCAGATGTCTATGGCTATGATGAGAAATCAGCTGGAG
TTTCCGTGCTGGCCCATGGGTCTTCTGGTCTCGTGGTCTCCCTGGCCCCCTGGTGCACCTGGTCC
TCAAGGTTTCAAGGCCCCCTGGTGAACCTGGCGAGCCTGGCGCTTCAAGTCCAATGGGTCCCCGAGGT
CCCCCTGGCCCTCCTGGCAAGAACGGAGATGATGGGAAGCTGGTAAGCCTGGCCGCCCTGGTGCAGCTG
GACCTCCTGGACCTCAGGGTCTCGTGGATTGCCTGGAACAGCTGGCCTCCCCGGAATGAAGGGACACAG
AGGTTTCAAGTGGTTTGGATGGTGCCAAAGGAGATACTGGTCTGCTGGTCCCTAAGGGAGAGCCTGGCAGT
CCTGGTGAATAAGGACTCCCGCCAGATGGGTCCCCGAGGTCTGCCTGGTGGAGAGAGGTGCGCCCTGGAC
CCCCTGGCAGTGCTGGTCTCGTGGTAACGATGGTGTGCTGCGGTGCAGCTGGGCCCCCCGGTCCCACCGG
CCCTACTGGCCCTCCTGGCTTCCCTGGTGCAGCTGGTGTAAAGGTGAAGCTGGTCCCCAGGGAGCCCGA
GGCTCTGAAGGTCCCCAGGGTGTGCGTGGTGGAGCCGGACCCCTGGCCCTGCTGGTGTGCTGGTCTG
CTGAAACCTGGTGTGATGGACAACCTGGTGTAAAGGTGCCAATGGTGTCTGGTATTGCTGGTGC
TCCTGGTTCCTGGTGGCCGAGGCCCTCTGGACCTCAGGGCCCGAGCGCGCTCCTGGTCCCCAAGGC
AACAGTGGTGAACCTGGTGGCCCTGGCAACAAAGGAGACTGGTGCCAAGGAGAACCCGGCCCTGCTG
GAGTTCAAGGTCCCCCTGGCCCTGCTGGAGAAGAAGGAAAACGAGGAGCCCGTGGTGGAGCCTGGACCTAG
CGGCCTGGCCGACCTCCTGGCGAGCGCGGTGGACCTGGTAGCCGTGGTTTCCCTGGTGTGATGGTGT
GCTGGCCCAAGGGTCTGCTGGTGAACGTGGTTCTCTGGCCCTGCTGGTCCCAAGGTTCTCTGGT



[View online »](#)

AAGCTGGTCGCCCTGGTGAAGCTGGTCTCCCTGGTGCCAAGGGTCTCACTGGCAGTCTGGCAGCCCTGG
TCCTGATGGCAAACCGGCCCCCTGGTCCCGTGGTCAAGATGGTCGCCCTGGACCCGCAGGTCCTCCT
GGAGCCCGTGGACAGGCTGGTGTGATGGGATTCCTGGACCTAAGGGTACTGCTGGAGAACCTGGAAAGG
CTGGAGAACGAGGTGTCCCCGGACCCCTGGCGCTGTTGGTCCCCTGGCAAAGATGGCGAAGCTGGAGC
TCAAGGAGCCCCGGCCCTGCTGGTCTGCTGGTGAAGAGAGGTGAACAAGTCCCCTGGCTCCCCTGGA
TTCCAGGGTCTTCTGGTCCCCTGGTCTCCTGGTGAAGCAGGCAAGCCTGGTGAACAGGGTGTTCCTG
GAGACCTTGGTGCCCTGGACCTCTGGCGCAAGAGGCGAGAGAGGTTTCCCCTGGTGAACGTGGTGTACA
AGGTCCCCCAGGTCCTGCTGGTCCCCGAGGAAACAATGGTGCCCCGGCAACGATGGTGCCAAGGGTGT
ACTGGTGCCCCGGAGCTCCTGGTAGCCAGGGTGCCCCGGTCTTCAGGGAATGCCTGGTGAACGTGGTG
CAGCTGGTCTTCCAGGTCTAAGGGTGACAGAGGTGATGCTGGTCCCAAAGGTGCTGATGGTTCTCCTGG
CAAAGATGGCGTCCGTGGTCTGACTGGTCCATTGGTCTCCTGGCCCTGCTGGTGGCCCTGGTGACAAG
GGTGAACCTGGTCCAGTGGTCTGCTGGCCCCACCGAGCCCGTGGTGGCCCCGGAGACCGTGGTGAAGC
CTGGTCCCCTGGTCTGCTGGCTTCGCTGGCCCCCTGGTGTGATGGCCAACCTGGTGCAGAAAGGTGA
ACCTGGTGATACTGGTGTAAAGGTGACCTGGTCTCCTGGCCCTGCTGGTCCCCTGGACCCCTGGC
CCCATTGGTAACGTTGGTGTCTCCTGGACCCAAAGGTTCTCGTGGTGTGCTGGTCCCCTGGTGTACTG
GTTTCCCCTGGTGTGCTGGTCTGTTGGTCCCCCTGGTCCCTCTGGAAATGCTGGACCCCTGGCCCTCC
CGGTCCCCTGGCAAAGAAGGGGGCAAAGGTCCCCGTGGTGAAGTGGTGGTGGTGGTGGTGGTGGTGGT
GTTGGTCCCCCAGGTCCCCTGGCCCTGCTGGTGAAGGATCTCCTGGTGTGATGGACCTGCTGGCT
CTCCTGGTACCCCTGGACCTCAGGGTATTGCTGGACAGCGTGGTGTGGTGGTGGTGGTGGTGGTGGT
AGAAAGAGGCTTCCCCTGGTCTTCTGGACCTCTGGTGAACCCGGCAAACAAGGTCTTCTGGAGCAAGT
GGTGAACGTGGTCCCCTGGCCCTATGGGCCCCCTGGATTGGCTGGCCCCCTGGTGAATCTGGTGGT
AGGGATCCCCTGGTGTGAAGGCTCCCCTGGAAGAGATGGTGTCTCCTGGTGGCAAGGGTGACCGTGGTGA
GACTGGCCCTGCTGGCCCCCTGGTGTCTCCTGGTGTCTCCTGGTGTCTCCTGGTGTCTCCTGGTGTCT
AAGAATGGCGACCGTGGTGAAGTGGTGGTGGTGGTGGTGGTGGTGGTGGTGGTGGTGGTGGTGGTGGT
GTCCTGCTGGACCCCAAGGCCCCCTGGTGAAGGGTGAAGCAGGCGAACAAGGTGACAGAGGCATAAA
GGGTATCGTGGCTTCTGCTGGTCTCCAGGGTCTCCTGGCTCTCCTGGCTCTCCTGGTGAACAAGGCCCC
TCTGGAGCTTCTGGTCTGCAGGTCCCCGGGTCCCCTGGTCTGCTGGTCTCCTGGCAAAGATGGAC
TCAACGGTCTCCTGGCCCCATTGGTCCCCTGGTCTCGAGGTGCGACTGGCGATAGTGGTCTGCTGG
TCCCCCGGACCTCCTGGACCCCTGGCCCTCCCCTGGTCTCCAGCGGTGGTTATGACTTCAGTTCCTG
CCTCAGCCACCTCAAGAGAAGTCTCAAGATGGTGGCCGTTACTACCGGGCCGATGATGCCAAGTGGTCC
GTGACCGTGGCTTGGAGTGGACTACCTCAAGAGCCTGAGCCAGCAGATTGAGAATCCCGCAGCCC
TGAGGGCAGCCGCAAGAACCCCGCCCGCACATGCCGTGACCTCAAGATGTGCCACTCTGACTGGAAGAGC
GGAGAGTACTGGATCGACCTAACCAAGGTGCAACCTGGATGCCATCAAGGTCTACTGCAACATGGAGA
CAGGTGACAGCTGTGTGTTCCCCTCAGCCCTCTGTGCCTCAGAAGAACTGGTACATCAGCCCAAACCC
CAAGGAGAAGAAGCATGTCTGGTTTGGAGAGAGCATGACCGATGGATTCCAGTTCGAGTATGGAAGCGAA
GGTTCGATCTGCCGATGTCGCTATCCAGTGGCTTCTGCGCTGATGTCCACCGAGGCCTCCCAGA
ACATCACCTATCACTGCAAGAACAGCGTAGCCTACATGGACCAACAGACTGGCAACCTCAAGAAGTCCCT
GCTCTCCAGGGCTCCAACGAGATCGAGCTCAGGGGCGAAGGCAACAGTTCGATTACCTACAGCAGGCTT
GTGGATGGTGCACGAGTCACACCGAACTTGGGGCAAGACAGTCATCGAATACAAAACCAAGACCT
CCCGCTGCCCATCATCGATGTGGCTCCCTGGACATTGGTGGCCAGACCAGGAATTCGGAATGGACAT
TGGCCCTGCCTGCTTCGTG

ACGCGTACGCGGCGGCTCGAGCAGAACTCATCTCAGAAGAGGATCTGGCAGCAAATGATATCCTGGATT
ACAAGGATGACGACGATAAGGTTAA

Protein Sequence: >RR212285 representing NM_053304
 Red=Cloning site Green=Tags(s)

MFSFVDLRLLLLLGATALLTHGQEDIPEVSCIHNGLRVPNGETWKPVDVCLICICHNGTAVCDGVLCKEDL
 DCPNPQKREGECPCPEEYVSPDAEVIIGVEGPKGDPGPGPRGVPVPPGQDIPGQPLGPPGPPGPP
 GPPGLGGNFASQMSYGYDEKSAGVSVPGMPGSPGRGLPGPPGAPGPGQFGQPPGEPGEPGASGPMGPRG
 PPGGPKNGDDGEAGKPRGPRGERGPPGQGARGLPGTAGLPGMKGHRGFSGLDGAKGDTGPAGPKGEPGS
 PGENGAPQMGRPLPGERGRPGPPGSAGARGNDGAVGAAGPPGPTGPTGPPGFGAAGAKGEAGPQGAR
 GSEGPQGVREGEPPGPAAGAAGPAGNPAGDQPGAKGANGAPGIAGAPGFPARGPSGPQPSGAPGPKG
 NSGEPGAPGNKGDGTAKGEPGPAVQGGPPAGEEGKRGARGEPGSPGLGPPGERGGPSRGPFGADGV
 AGPKGPAGERGSPGAPGKGSPEAGRPGEAGLPGAKGLTGSPPGPDGKTGPPGAPQDGRPGAPGP
 GARGQAGVMGFPGKGTAGEPGKAGERGVPPGAVGPAGKDGEAGAQQGAPGAPAGERGEQGPAGSPG
 FQGLPGAPGPEAGKPEQGVPGDLGAPGSPGARGERGFGERGVQGGPPGAPRGNNGAPNDGAKGD
 TGAPGAPGSGAPGLQGMPPGERGAAGLPGPKGDRGDAGPKGADGSPGKDGVRGLTGP I GPPGAPAGPK
 GETGSPGAPGTARGAPGDRGEPGPPGAFAGPPGADGQPGAKGEPGDTGVKGDAGPPGAPGAPGPPG
 PIGNVGAPGPKGSRGAAGPPGATGFGAAGRVGPPGPSNAGPPGPPGVPKKEGKGRGETGPAGRPGE
 VGPPGPPGAGEKSGADGPAGSPGTPGPQGIAGQRGVVGLPGQRGERGFPGLPGSPGEPKQGPSGAS
 GERGPPGMPGPPGLAGPPGESGREGSPGAEGSPGRDGAPGAKGDRGETGPAGPPGAPGAPGVPVAG
 KNGDRGETGPAGAPGIPGAGARGAPGQGRGDKGETGEQDRIKGHGFSGLQGGPSGSPGEPQGP
 SGASGPAGPRGPPGSAGSPGKDLNGLPGPIGPPGPRGRTGDSGPAGPPGPPGPPGPPGPPGGYDFSL
 PQQPQEKSDGGRYYRADDANVVRDRDLEVDTTLKSLSQIENIRSEPSRKNPARTCRDLKMCHSDWKS
 GEYWIDPNQGCNLD AIKVYCNMETGQTCVFPTQPSVPQKNWYISPNPKEKKHWFESMTDGFQFEYGSE
 GSDPADVAIQLTFLRLMSTEASQNTIYHCKNSVAYMDQQTGNLKKSLLLQGSNEIELRGEGNSRFTYSTL
 VDGCSTHTGTWGTVIEYKTTKTSRLPIIDVAPLDIGAPDQEFGMDIGPACFV

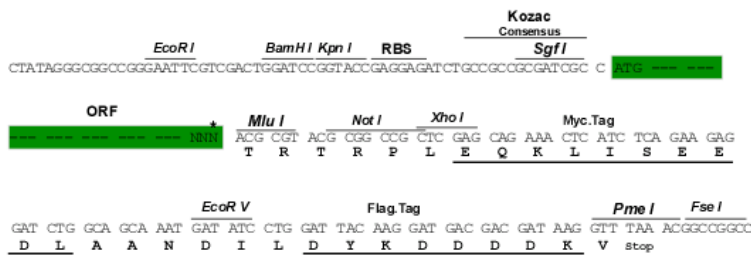
TRTRPLEQKLISEEDLAANDILDYKDDDDKV

Restriction Sites:

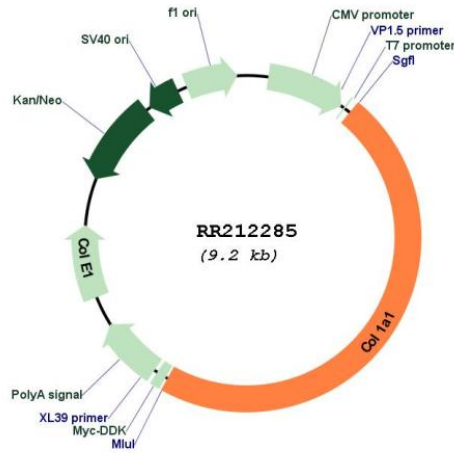
SgfI-MluI

Cloning Scheme:

Cloning sites used for ORF Shuttling:



* The last codon before the Stop codon of the ORF

Plasmid Map:


ACCN: NM_053304

ORF Size: 4359 bp

OTI Disclaimer: The molecular sequence of this clone aligns with the gene accession number as a point of reference only. However, individual transcript sequences of the same gene can differ through naturally occurring variations (e.g. polymorphisms), each with its own valid existence. This clone is substantially in agreement with the reference, but a complete review of all prevailing variants is recommended prior to use. [More info](#)

OTI Annotation: This clone was engineered to express the complete ORF with an expression tag. Expression varies depending on the nature of the gene.

Components: The ORF clone is ion-exchange column purified and shipped in a 2D barcoded Matrix tube containing 10ug of transfection-ready, dried plasmid DNA (reconstitute with 100 ul of water).

Reconstitution Method:

1. Centrifuge at 5,000xg for 5min.
2. Carefully open the tube and add 100ul of sterile water to dissolve the DNA.
3. Close the tube and incubate for 10 minutes at room temperature.
4. Briefly vortex the tube and then do a quick spin (less than 5000xg) to concentrate the liquid at the bottom.
5. Store the suspended plasmid at -20°C. The DNA is stable for at least one year from date of shipping when stored at -20°C.

RefSeq: [NM_053304.1](#), [NP_445756.1](#)

RefSeq Size: 5843 bp

RefSeq ORF: 4362 bp

Locus ID: 29393

UniProt ID: [P02454](#)

Cytogenetics: 10q26

MW: 138 kDa

Gene Summary: extracellular matrix collagen protein [RGD, Feb 2006]