

Product datasheet for RR212226

Rfc1 (NM_053547) Rat Tagged ORF Clone

Product data:

Product Type:	Expression Plasmids
Product Name:	Rfc1 (NM_053547) Rat Tagged ORF Clone
Tag:	Myc-DDK
Symbol:	Rfc1
Synonyms:	Recc1
Vector:	pCMV6-Entry (PS100001)
E. coli Selection:	Kanamycin (25 ug/mL)
Cell Selection:	Neomycin
ORF Nucleotide Sequence:	>RR212226 representing NM_053547 Red=Cloning site Blue=ORF Green=Tags(s)

TTTTGTAATACGACTCACTATAGGGCGCCGGAATTCGTCGACTGGATCCGGTACCGAGGAGATCTGCC
GCCGCGATCGCC

ATGGACATTCGGAATTCCTTGGGGTTATATCAAGTGAAAAAGCCTGTAATGAGACAGTAAAGAAGA
ATGAGAAGACAAAACCTTCGGAGGGCAGTGTCAAAGGAAAGCAAGGAGTAAAGGAAGCCAAGGTTAATA
TCCCTGCAAAGAGGATGCCTCCAGACCAAAGCAGCACAAAGAAAAAGAGGATCATCTATGACTCAGAT
TCAGAATCAGAGGAGACAGTGCAGTAAAAATGCTAAAAAGAAATCAGAAAAATTGCCAGTGTCTTGTA
AACCTGGTAAAACTCTCGGAAGGATCCTGTTACCTATATTTCTGAGACAGATGAAGACGATGACTTTTT
ATGAAAAAGGCAGCCTCCAAATCAAAAGAGAATGGAGTATCTACAAACAGTTACCTTGGAGCATCAAAC
GTGAAAAAGAATGAAGAAAACACTAAGACTAAGAGTAAACCGTTATCACCAATAAACTAACACCGACAT
CAGTGTCTGATTATTTGGAACTGAAAGTGTCCAGAGATCTGGGAAGAAGATGGTGGCGAGCAAAAAGAA
AGAGTCTTCTCAAACCCAGATGATTCCAGATTAATGATGAGGCCATCGCCAAGCAGCTTCAGCTTGAT
GAAGATGCAGAGCTGGAGAGGCAGTTGCATGAAGATGAAGAATTTGCAAGAACACTGGCCTTGTTGGATG
AAGAACCTAAGACCAAAAAGGCTCGAAAGGACTCTGAAGAGGGAATCATTTTCCACTGCCAAAGCTGA
GTTAAGCAAAGCAGCAAAGCAGAAGAGCCCTGCTAACGAGCATTCTCAATTGGAAGAAAGACCTACAGT
CCTGCTAAGTACGGCAAGGGTAGAGGCTCAGAAGGCACCAAGCAGCCCTGCAGATCAGCTACCAGAAGG
AAGCCTGCTCCTCTCAAGGCCAGCTCCAAGTCGGCTCTATGAAAGCACAAGAAGAAAATTTCTACAA
AGAAACAGAAGCTGCTGGCTGCAAAAAGAGAAAGTGCCATTGAGCCCAAAGGAGAGAAAACAACCTCAGG
AAAACGAAAGGCTCTCCAATAAAAGAGAGTCTGTAAGCCAGAAGATTCTGAAAAGAAGCGCACCAATT
ATCAAGCTTATCGAAGCTACTTAAATCGAGAAGGTCCCAAAGCCCTGGGCTCAAAGAAATACCAAAGG
AGCTGAAAAGCTTGGAGGGCCTGACGTTTCGTGATCACCGAGTGTGGAGTCCATCGAACGAGAAGAA
GCCAAGTCTTAATTGAACGTTATGGGGGAAAGTAAACAGGAAACGTGAGCAAGAAAACAGCTACCTCG
TCATGGGCCGGGACAGCGGGCAGTCCAAGAGTGACAAGGCAGCAGCTCTGGGAACAAAAATCCTTGATGA
AGACGGCCTGTTGGATCTGATTGAACTATGCCGGCAAAAAATCCAAGTACGAAATCGCTGCTGAGGCT
GAGATGAAGAAAGAAAAGTCCAATTGGAGAGAACACCCCAAAAAATGATCAGGGAAAAAGAAACTTA



[View online >](#)

GTCCAACCAAGAGGGAGTTGGAGCCTAAAAAGAGCAAGCTGACTCCCCTTAAGCACAGCCCTCGGAAGGC
 AGTGAAGGAGGAGGAACGTGTGTGTCCGAGGGGCTTGGACGCCAAGGAGCCTCATGGCAGCCACAGTGCC
 AGCAGAGAGGAGTGCCTGCTCTGGGTGGATAAGTACAAGCCCACCTCACTCAAGAACATAATCGGACAGC
 AGGGTGACCAGAGCTGTGCCAACAACTGCTACGCTGGCTCAGAACTGGCACAAGAGTTCTCCAGAAGA
 GAAAAAGCATGCAGCAAAATTTGGCAAAGTTGCCAGCAAAGATGATGGCTCCAGTTTCAAGGCAGCACTG
 CTGTCTGGCCCTCCAGGTGTTGGCAAACCACTACAGCTTCTCTGTGTGTCAGGAATGGGCTACAGTT
 ATGTGGAACATAATGCGAGTGATACTCGGAGTAAGAACAGTCTGAAAGCAATTGTTGCTGAGTCTGAA
 CAACACCAGCATCAAAGGCTTTTATACAAGTGGAGCATCTCCTTCTGTAAGTGCGAGGCATGCTCTCATC
 ATGGATGAAGTTGATGGCATGGCGGCAATGAGGACAGGGGTGGAATTCAGGAGCTAATAGGCTGATAA
 AGCATACGAAAATTTCCATCATTGTATGTGCAATGATAGAAATCACCCCAAAATCCGCTCATTGGTTCA
 TTATTGTTTTGATCTTCGTTTCCAAAGACCTCGAGTTGAACAGATTAAGAGTGAATGCTGTCTATTGCA
 TTTAAAGAGGGATTAAGATCCCACCTCCAGCTATGAATGAAATAATTTGGGAGCTAATCAAGATGTCA
 GACAGGTTTTACACAATCTCAGTATGTGGTGTGCACAGAGTAAGGTCCTAACCTATGACCAAGCCAAGGC
 TGATTCTCAGAGGGCCAAGAAGGACATCAGATTGGGCCATTTGATGTCACCCGAAAGTGTTCAGCT
 GGAGAGGAGACTGCACACATGCTACTGATGGACAATCGGATCTCTTTTCCATGACTATTCATTGCAC
 CCCTCTTTGTCCAGGAGAACTACCTCCATGTAAGCCTGTGGCTCAGGGGGTGACATGAAAAAGCACTT
 GATGCTTTTAAGCCGGGACGAGATAGCATATGTGACGGTGACTTAGTGACAATCAGATCCGGAGTAAG
 CAAAATGGAGTCTTCTGCCACACAGGCCATTTACGCCAGCGTTGTTCTGGAGAGTTGATGAGGGGCT
 ACATGTCTCAGTTTCCAGCTTCCCAAGCTGGCTGGGAAAGCACTCGTCTATGGGCAAGCATGATCGGAC
 TGTTCCAGGACCTGCTTGCACATGAGTCTTAGAACTTACTCCAGCAAAGGACAGTGAACATGGATTAC
 CTGTCCACATCAGAGACGCACTTGTACGACCTTGACCTCACAAGGAGTAGAAGGGTTACAGCGTGTG
 TCACACTTATGGATACATACTATTTGGTGAAGAAGATTTGACAACATCATGGAAGTTAGCAGATGGGG
 GGGCAAGCCCAGTACCTTTTCCAAGCTGGACCCCAAGGTGAAAGCAGCCTTCAAGAGCAGATAATAAG
 GAGGCCACCTGACCCCACTCACTCAGGTGGTAAAGGCATCGAGGCCAGCATAGGTCAGCACTGG
 ATTCTGAGTACAATGAAGAGTCACAGGAAGATGCCACTCAGTCTGATGAGAAAGAGCAGGATGCCCTAGA
 GACTGATGCCATGATCAAGCAGAAAAAGACGAGATCTTCAAAGCCTTCAAATCAGAAAAAGAGAAGGAG
 TCCAAAAAGGAAAAGGAAAAAATTCGAAGAAA

ACGCGTACGCGGCCGCTCGAGCAGAACTCATCTCAGAAGAGGATCTGGCAGCAATGATATCCTGGATT
 ACAAGGATGACGACGATAAGGTTTAA

Protein Sequence:

>RR212226 representing NM_053547
 Red=Cloning site Green=Tags(s)

MDIRKFFGVISSGKPKVNETVKKNEKTKPSEGTGKQGVKEAKVNNPCKEDASRPKQHNKKRIIYDSD
 SESEETVQVKNKKSEKLPVSKPGKISRKDPVTYISETDEDDDFLCKKAASKSKENGVTNSYLGASN
 VKKNEENTKTKSKPLSPIKLTPTSVLDYFGTESVQRSGKMKVASKKESQTPDDSRNLNDEAIAKQLQLD
 EDAELERQLHEDEEFARTLALLDEEPKTKKARKDSEEGESFSPAELSKAAKQKSPANEHFSIGRKTYS
 PAKYKGRGSEGTKQPCSAHQKEACSSKASSKALMKAQEENSYKETELLAARKRESAIEPKGEKTTTPR
 KTKGSPTKRESVSPEDSEKRTNYQAYRSYLNREGPKALGSKEIPKAENCLEGLTFVITGVLESIEREE
 AKSLIERYGGKVTGNVSKTSYLVGRDSGQSKSDKAAALGTKILDEDGLLDLIRTMPGKSKYEIAAEA
 EMKKEKSKLERTPQKNDQGRKLSPTKRELEPKSKLTPLKHSRPAKVEEERVCPRGLDAKEPHGSHSA
 SREECLLWVDKYPTSLKNIIGQQGDQSCANKLLRWLRNWHKSSPEEKHAAKFGKVASKDDGSSFKAAAL
 LSGPPGVGKTTTASLVCQELGYSYVELNASDTRSKNSLKAIVAESLNNTSIKGFYTSGASPSVSARHALI
 MDEVDMAGNEDRGGIQELIGLIKHTKIPICMCNDRNHPKIRSLVHYCFDLRFQRPRVEQIKSAML SIA
 FKEGLKIPPPAMNEIILGANQDVRQVHLNLSMWCAQSKVLTYDQAKADSQRRAKDIRLGPFDVTRKVFVA
 GEETAHMSLMDKSDLFFHDYSIAPL FVQENYLHVKPVAAAGDMKKHMLLSRAADSI CDGDLVDNQIRSK
 QNWSLLPTQAIYASVVPGELEMRGYMSQFPSPSWL GKSSMGKHDRTVQDL SLHMSLRTYSSKRTVNMDY
 LSHIRDALVRPLTSQGVQVQVVTLMDTYYLVKEDFDNIMEVSSWGGKPSFSLDPKVKAAAFTRAYNK
 EAHLTPYSLQVVKASRPSIGPALDSEYNEESQEDATQSDEKEQDALETDAMIKQKKTRSSKPSKSEKEKE
 SKKGGKNSKK

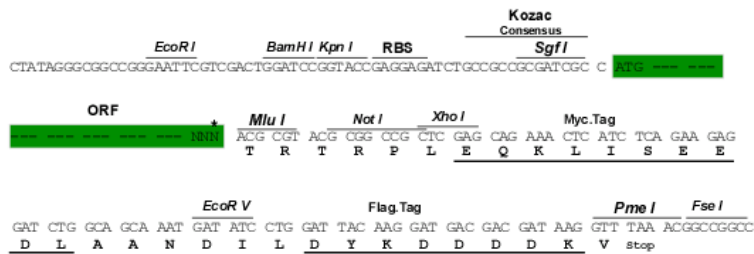
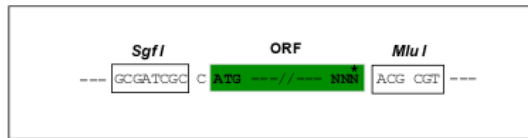
TRTRPLEQKLISEEDLAANDILDYKDDDDKV

Restriction Sites:

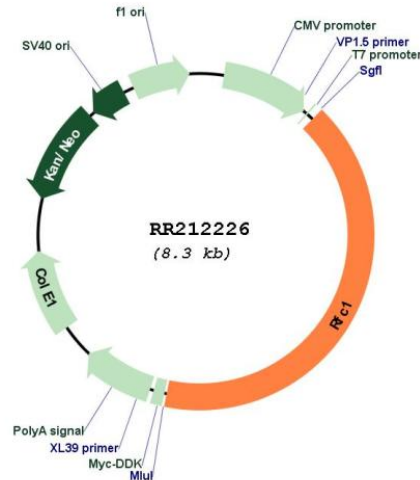
SgfI-MluI

Cloning Scheme:

Cloning sites used for ORF Shuttling:



* The last codon before the Stop codon of the ORF

Plasmid Map:


ACCN: NM_053547

ORF Size: 3393 bp

OTI Disclaimer: The molecular sequence of this clone aligns with the gene accession number as a point of reference only. However, individual transcript sequences of the same gene can differ through naturally occurring variations (e.g. polymorphisms), each with its own valid existence. This clone is substantially in agreement with the reference, but a complete review of all prevailing variants is recommended prior to use. [More info](#)

OTI Annotation: This clone was engineered to express the complete ORF with an expression tag. Expression varies depending on the nature of the gene.

Components: The ORF clone is ion-exchange column purified and shipped in a 2D barcoded Matrix tube containing 10ug of transfection-ready, dried plasmid DNA (reconstitute with 100 ul of water).

Reconstitution Method:

1. Centrifuge at 5,000xg for 5min.
2. Carefully open the tube and add 100ul of sterile water to dissolve the DNA.
3. Close the tube and incubate for 10 minutes at room temperature.
4. Briefly vortex the tube and then do a quick spin (less than 5000xg) to concentrate the liquid at the bottom.
5. Store the suspended plasmid at -20°C. The DNA is stable for at least one year from date of shipping when stored at -20°C.

RefSeq: [NM_053547.1](#), [NP_445999.1](#)

RefSeq Size: 4741 bp

RefSeq ORF: 3396 bp

Locus ID: 89809

Cytogenetics: 14p11

MW: 125.8 kDa

Gene Summary: transcriptional repressor that regulates transcription of the vasoactive intestinal peptide receptor gene [RGD, Feb 2006]