

Product datasheet for RR212224

Scn11a (NM_019265) Rat Tagged ORF Clone

Product data:

Product Type:	Expression Plasmids
Product Name:	Scn11a (NM_019265) Rat Tagged ORF Clone
Tag:	Myc-DDK
Symbol:	Scn11a
Synonyms:	NaN
Vector:	pCMV6-Entry (PS100001)
E. coli Selection:	Kanamycin (25 ug/mL)
Cell Selection:	Neomycin
ORF Nucleotide Sequence:	>RR212224 representing NM_019265 Red=Cloning site Blue=ORF Green=Tags(s)

CTATAGGGCGGCCGGGAATTCGTCGACTGGATCCGGTACCGAGGAGATCTGCCGCCGCGATCGCCGGCGC
GCC

ATGGAGGAGAGGTACTACCCGGTGATCTCCCGGACGAGCGGAATTTCCGCCCTTCACTCCGACTCTC
TGGCTGCCATAGAGAAGCGGATTGCTATCCAAAAGGAGAGGAAGAAGTCCAAAGACAAGCGGCAGCTGA
GCCCCAGCCTCGCCTCAGCTTGACCTAAAGGCCTCCAGGAAGTTACCTAAGCTTTATGGTGACATTCCC
CCTGAGCTTGTAGCGAAGCCTCTGGAAGACCTGGACCCATTCTACAAAGACCATAAGACATTCATGGTGT
TGAACAAGAAGAGAACAATTTATCGCTTCAGCGCAAGCGGCCCTTGTTCACTTCTGGGGCCTTTAATCC
CCTCAGAAGCTTAATGATTTCGTATCTCTGTCCATTCACTTTAGCATGTTTCATCATCTGCACGGTGATC
ATCAACTGTATGTTTATGGCAATTCTATGGAGAGAAGTTTCGACAACGACATTCGCCAATACGTCTTCA
TTGGGATTTATATTTAGAAAGCTGTGATTAATAATTGGCAAGAGGCTTCATTGTGGATGAGTTTTCTT
CCTCCGAGATCCGTGGAAGTGGCTGGACTTCATTGTGATTGGAACAGCGATCGCAACTTGTTCGGGGC
AGCCAAGTCAATCTTTCAGCTCTTCGTACCTCCGAGTGTTTCAGAGCTCTGAAGGCGATTCAGTTATCT
CAGGTCTGAAGGTCATCGTAGTGCCCTGCTGCGCTCGGTGAAGAAGCTGGTAGACGTGATGGTCTCAC
TCTCTTCTGCCTCAGCATCTTTCCTGCTCGGTGAGCAGCTGTTTCATGGGAATTCGAACCAGAAGTGT
ATTAAGCACAAGTGTGGCCCAACCCTGCATCCAAAGGATTGCTTTGAAAAGGAAAAAGATAGCGAAG
ACTTCATAATGTGGTACCTGGCTCGGCAGCAGACCCTGTCCCAATGGTTCTACGTGCGATAAAACCAC
ATTGAACCCAGACAATAATTATACAAAGTTTGACAACCTTTGGCTGGTCTTTCTCGCCATGTTCCGGGT
ATGACTCAAGACTCCTGGGAGAGGCTTTACCGACAGATCTGCGGACCTCTGGGATCTACTTTGTCTTCT
TCTTCGTGGTGGTCATCTTCTGGGCTCCTTCTACCTGCTTAACCTAACCTGGTGTGTCACCATGGC
TTATGAAGAACAGAACAGAAATGTAGCTGCTGAGACAGAGGCCAAGGAGAAAATGTTTCAGGAAGCCAG
CAGCTGTTAAGGGAGGAGAAGGAGGCTCTGGTTGCCATGGGAATTGACAGAAGTCCCTTAATCCCTTC
AAGCTTCATCCTTTCCCGAAGAAGAGGAAAGTTTTTCGGTAGTAAGACAAGAAAGTCCCTCTTTATGAG
AGGGTCCAAGACGGCCCAAGCCTCAGCGTCTGATTGAGGAGCAGTGCCTCTAAAAATCCACAGCTCCT
GAGCAGACCAACGACTGTCCAGAAGTGGCAGTGGATCTCTTTGATGAGCAGCTGGACCCCTCCACA



[View online »](#)

GGCAGAGAGCGCTGAGCGCTGTCAAGTATCTTAACCATCACCATGCAGGAACAAGAAAAATCCAGGAGCC
 TTGTTTCCCATGTGGGAAAAATTTGGCCTCTAAGTACCTGGTGTGGGACTGTAGCCCTCAGTGGCTGTGC
 ATAAAGAAGGTCTGCGGACCATCATGACGGATCCCTTACTGAGCTGGCCATCACCATCTGCATCATCA
 TCAATACCGTTTTCTAGCCGTGGAGCACCACAACATGGATGACAACCTAAAGACCATACTGAAAATAGG
 AAACGGGTTTTACGGGAATTTTCATAGCGGAAATGTGTCTCAAGATCATCGCGCTCGACCCTACCAC
 TACTCCGGCACGGCTGGAATGTTTTGACAGCATCGTGGCCCTCCTGAGTCTCGCTGATGTGCTCTACA
 ACACACTGTCTGATAACAATAGTCTTTTGGCTTCCCTCAGAGTGTGAGGGTCTTCAAGTAGCCAA
 ATCCTGGCCACGTTAAACACTCTCATTAAAGATCATCGGCCACTCCGTGGGCGCGCTTGGAAACCTGACT
 GTGGTCTGACTATCGTGGTCTTCTATCTTTTCTGTGGTGGGCATGCGGCTCTTCGGCACCAAGTTTAAACA
 AGACCGCTACGCCACCCAGGAGCGGCCAGGCGGCGCTGGCACATGGATAAATTTCTACCACTCCTTCT
 GGTGGTGTTCGCATCCTCTGTGGGAAATGGATCGAGAACATGTGGGGCTGCATGCAGGATATGGACGGC
 TCCCCGTGTGCATATTGTCTTGTCTGATAATGGTGTGATCGGGAAGCTTGTGGTGTAACTCTTCA
 TTGCCCTGTGCTCAATTCCTCAGCAATGAGGAGAAGGATGGGAGCCTGGAAGGAGAGACCAGGAAAAC
 CAAAGTGCAGCTAGCCCTGGATCGTTCGGCCGGGCTTCTCCTTCATGTGCACGCTCTTCAGAGTTTT
 GTTGTCAAGAAATGCAGGAGGAAAACTCGCCAAAGCCAAAAGAGACAACAGAAAGCTTTGCTGGTGA
 ATAAAGACTCAATCCTCCGGATGCGAGGCCCTGGAAGGAGTATGATACAGACATGGCTTTGTACTAGG
 ACAGGCCGGGGCTCCGCTGGCCCCACTCGCAGAGGTAGAGGACGATGTGGAATATTGTGGTGAAGGCGGT
 GCCCTACCCACCTCACAACATAGTGTGGAGTTCAGGCCGGTGCCTCCCTCCAGAGACCAAGCAGCTCA
 CTAGCCCGGATGACCAAGGGGTTGAAATGGAAGTATTTCTGAAGAAGATCTGCATTTAAGCATAACAGAG
 TCCTCGAAAGAAGTCTGACGCAGTGTGATGCTCTCGGAATGCAGCACAATTGACCTGAATGATATCTTT
 AGAAATTTACAGAAAACAGTTTTCCCCAAAAAGCAGCCAGATAGATGCTTTCCCAAGGGCCTTAGTTGC
 ACTTTCTATGCCAAAAACAGACAAGAGAAAGTCCCCCTGGGTCTGTGGTGAACATTCGGAAAAACCTG
 CTAACAAATCGTGAAGCACAGCTGGTTTGAGAGTTTCAATATCTTTGTTATTCTGCTGACGAGTGGAGCG
 CTGATATTTGAAGATGTCAATCTCCCCAGCCGGCCAAAGTTGAGAAATTAATAAGGTGTACCGATAATA
 TTTTACATTTATTTTCTCCTGGAATGATCCTGAAGTGGTGGCCTTTGGATTCCGGAGGTATTTTAC
 CAGTGCCTGGTGTGGCTTGAATTTCTCATTGTGGTGGTGTCTGTGCTCAGTCTCATGAATCTACCAAGC
 TTGAAGTCTTCCGGACTCTGCGGGCCCTGAGACCTCTGCGGGCGCTGTCCAGTTTGAAGGAATGAAGG
 TTGCTGCTACGCCCTGATCAGCGCCATACCTGCCATTCTCAATGTCTTGGTGTGCTGCCTATTTTCTG
 GCTCGTATTTGTATCTTGGGAGTAAATTTATTTCTGGGAAGTTTGAAGGTGCATTAACGGGACAGAC
 ATAAATATGTATTTGGATTTTACCGAAGTTCGAAACCGAAGCCAAATGTAACATTAGTAATTACTCGTGA
 AGGTCCCGCAGGTCAACTTTGACAACGTGGGGAATGCCTATCTCGCCCTGCTGCAAGTGGCAACCTATAA
 GGGCTGGCTGGAATCATGAATGCTGCTGTCGATTCCAGAGAGAAAGACGAGCAGCCGGACTTTGAGGCG
 AACCTCTACGCGTATCTACTTTGTGGTTTTATCATCTTCGGCTCCTTCTTTACCCTGAACCTCTTTA
 TCGGTGTTATTATTGACAACCTCAATCAGCAGCAGAAAAAGTTAGGTGGCCAAGACATTTTTATGACAGA
 AGAACAGAAGAAATATTACAATGCAATGAAAAAGTTAGGAACCAAGAAACCTCAAAGGCCATCCCAAGG
 CCCCTGAACAAATGTCAAGCCTTTGTGTTGACCTGGTCAAGCCAGGTCTTTGACGTGCATATTCTGG
 GTCTTATTGTCTTAAATATGATTATCATGATGGCTGAATCTGCCGACCAGCCAAAGATGTAAGAAAAC
 CTTTGATATCCTCAACATAGCCTTCGTGGTCACTTTACCATAGAGTGTCTCATCAAAGTCTTTGCTTTG
 AGGCAACACTACTTCACCAATGGCTGGAACCTTATTTGATTGTGGTGTGCTGTTCTTTCTATCATTAGTA
 CCTGGTTTTCCGCTTGGAGGACAGTGACATTTCTTTCCGCCCCAGCTCTTTCAGAGTCTCGCTTGGC
 TCGGATTGGTCAATCCTCAGGCTGGTCCGGGCTGCCCGGGAATCAGGACCCTCCTCTTTGCTTTGATG
 ATGTCTCTCCCTCTCTCTTCAACATCGGTCTGCTGCTTCTTGGTGTGTTTACGCCATCTTTG
 GGATGAGCTGGTTTTCAAAGTGAAGAAGGGCTCCGGGATCGACGACATCTTCAACTTCGAGACCTTTAC
 GGGCAGCATGCTGCTCTTCCAGATAAACACTTCGGCTGGCTGGGATACCCTCCTCAACCCATGCTG
 GAGGCAAAGAACACTGCAACTCCTCCTCCAAGACAGCTGTGACGAGCCGAGATAGCCGTGCTACT
 TCGTCAGTTACATCATCATCTCCTTCTCATCGTGGTCAACATGTACATCGCTGTGATCCTCGAGAACTT
 CAACACAGCCACGGAGGAGCGAGGACCCTCTGGGAGAGGACGACTTTGAAATCTTCTATGAGGTCTGG
 GAGAAGTTTGACCCCGAGGCGTGCAGTTCATCCAGTATTCGGCCCTCTGACTTTGCGGACGCCCTGC
 CGGAGCCGTTGCGTGTGGCCAAGCCGAATAAGTTTCAGTTTCTAGTGTGACTTGCCATGGTGTGGG
 CGACCGCTCCATTGCATGGATGTTCTTTGCTTTCACTACCAGGGTCTCGGGGACTCCAGCGGCTTG
 GATACCATGAAAACCATGATGGAGGAGAAGTTTATGGAGGCCAACCTTTTAAAGAAGCTCTACGAGCCCA
 TAGTCACCACCACCAAGAGGAAGGAGGAGGAGCAAGGCCCGCCGCTATCCAGAGGGCTACCGGAAACA

CATGGAGAAGATGGTCAAACCTGAGGCTGAAGGACAGGTCAAGTTCATCGCACCAGGTGTTTTGCAATGGA
GACTTGTCCAGCTTGGATGTGGCCAAGGTCAAGGTTACAATGAC

AGCGGACCGACGCGTACGCGGCCGCTCGAGCAGAAACTCATCTCAGAAGAGGATCTGGCAGCAAATGATATCC
TGGATTACAAGGATGACGACGATAAGGTTTAA

Protein Sequence:

>RR212224 representing NM_019265
Red=Cloning site Green=Tags(s)

MEERYYPVIFPDERNFRPFTSDSLAAIEKRIAIQKERKSKDKAAAEPQPRPQLDLKASRKLPKLYGDIP
PELVAKPLEDLDPFYKDHKTFMVLNKKRTIYRFSKRALFILGPFNPLRSLMIRISVHVSFMSFIICTVI
INCMFMANSMERSFDNDIPEYVFIGIYILEAVIKILARGFVDEFSSFLRDPWNWLDIVIGTAIATCFPG
SQVNL SALRTRFRVFRALKAISVISGLKIVIGALLRSVKKLVDVMVLTFLCLSIFALVGQQLFMGILNQKC
IKHNCGPNPASNKDCFEKEKDEDFIMCGTWLGSRPCNGSTCDKTTLNPDNNYTKFDNFGWSFLAMFRV
MTQDSWERLYRQILRTSGIYFVFFVVFVIFLGSFYLLNLTAVVTMAYEEQNRNVAAETEAKEKMFQEAQ
QLLREEKEALVAMGIDRSSLSLQASSFSPPKRRKFFGSKTRKSFMRGSKTAQASASDSEDDASKNPQLL
EQTKRLSQNLPVDLFDEHVDPLHRQRALSAVSILTITMQEQEFQPCFPCGKNLASKYLVDWCSPQWLC
IKKVLRTIMTDPFTELAITICIIINTVFLAVEHHMDDNLKTIKIGNWVFTGIFIAEMCLKIIALDPYH
YFRHGWNVFDISIVALLSLADVLNLTSDNNRSFLASLRVLRVFKLAKSWPTLNTLIKIIGHSVGALGNLT
VVLTI VVFIFSVGMRLFGTKFNKTAYATQERPRRRWHMDFYHSFLVVFRLCGEWIENMWGCMQDMDG
SPLCII VVFLIMVIGKLVVNLFIALLNSFSNEEKDGSLEGETRKTQVQLALDRFRRASFMLHALQSF
CCKKCRKNPKPKETTESFAGENKDSILPDARPWKEYDTDMALYTGQAGAPLAPLAEVEDDVEYCGEGG
ALPTSQHSAGVQAGDLPETKQLTSPDDQGVEMEVFSEEDLHLSIQSPRKKSDAVSMLSECSTIDLNDIF
RNLQKT VSPKQPDRCFPKGLSCHFLCHKTDKRSPPWLVWNIRKTCYQIVKHSWFESFII FVILLSSGA
LIFEDVNLPSRPQVEKLLRCTDNIFTIFLLEMILKWVAFGFRRYFSAWCWLDLIVVSVLSLMLNPS
LKSFRTLRALRPLRALSQFEGMKVVVYALISAIPAILNVLLVCLIFWL VFCILGVNLFSGKFGRCINGTD
INMYLDFTEVPNRSQCNI SNYSWKVPQVNF DNVGNAYLALLQVATYKGWLEIMNAAVDSREKDEQPDFA
NLYAYLYFVVF IIFGSFFTLNLF IGV I IDNFNQKQLGGQDIFMTEEQKYYNAMKLGTKPKQKPIPR
PLNKCAQAFVFDLVT SQVFDV I I LGLIVLNMIIMMAESADQPKDVKKTFDILNIAFVVIFTIECLIKVFA
RQHYFTNGWNL FDCV VVLSIIISTLVSRLESDISFPPTLFRVVRLARIGRILRLVRAARGIRTLLFALM
MSLPSL FNI GLLLFLVMFIY AIFGMSWF SKVKKGSGIDDFNFETFTGSMLCLFQITTSAGWDTLLNPML
EAKEHCNSSSQDSCQPQI AVVYFVSYIIISFLIVVNMYIAVILENFNTATEESEDPLGEDDFEIFYEVW
EKFDPEASQFIQYSALSDFADALPEPLRVAKPNKFQFLVMDLPMVMGDRLHCMDVLAFTTRVLGDSSGL
DTMKTMMEEKFMEANPFKLYEPIVTTTKRKEEQGAAVIQRAYRKHMEKMKLRLKDRSSSSHQVFCNG
DLSSLDVAKVKVHND

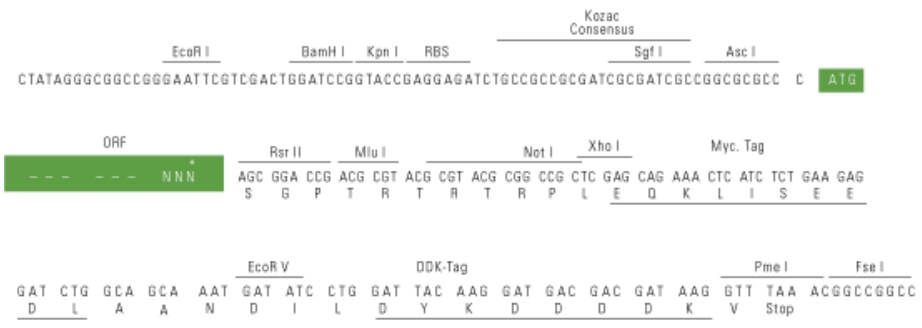
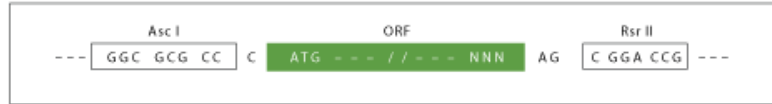
SGPTRRTRPLEQKLI SEEDLAANDILDYKDDDDKV

Restriction Sites:

Ascl-RsrII

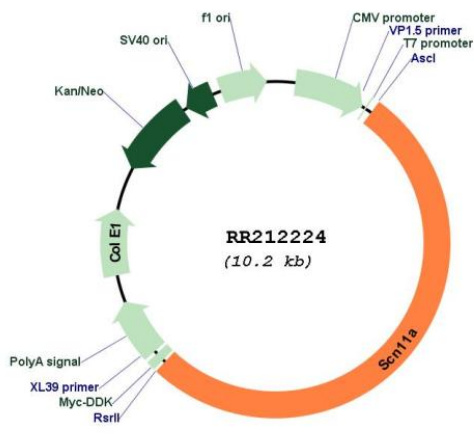
Cloning Scheme:

Cloning sites used for ORF Shuttling:



* The last codon before the Stop codon of the ORF

Plasmid Map:



ACCN:	NM_019265
ORF Size:	5295 bp
OTI Disclaimer:	The molecular sequence of this clone aligns with the gene accession number as a point of reference only. However, individual transcript sequences of the same gene can differ through naturally occurring variations (e.g. polymorphisms), each with its own valid existence. This clone is substantially in agreement with the reference, but a complete review of all prevailing variants is recommended prior to use. More info
OTI Annotation:	This clone was engineered to express the complete ORF with an expression tag. Expression varies depending on the nature of the gene.
Components:	The ORF clone is ion-exchange column purified and shipped in a 2D barcoded Matrix tube containing 10ug of transfection-ready, dried plasmid DNA (reconstitute with 100 ul of water).
Reconstitution Method:	<ol style="list-style-type: none">1. Centrifuge at 5,000xg for 5min.2. Carefully open the tube and add 100ul of sterile water to dissolve the DNA.3. Close the tube and incubate for 10 minutes at room temperature.4. Briefly vortex the tube and then do a quick spin (less than 5000xg) to concentrate the liquid at the bottom.5. Store the suspended plasmid at -20°C. The DNA is stable for at least one year from date of shipping when stored at -20°C.
RefSeq:	NM_019265.2 , NP_062138.1
RefSeq Size:	5905 bp
RefSeq ORF:	5298 bp
Locus ID:	29701
UniProt ID:	O88457
Cytogenetics:	8q32
MW:	201.8 kDa
Gene Summary:	Na channel alpha-subunit; may be involved in generation of electrical activity in peripheral sensory neurons [RGD, Feb 2006]