

## Product datasheet for **RR212194**

### Srpk2 (NM\_001106575) Rat Tagged ORF Clone

#### Product data:

Product Type:	Expression Plasmids
Product Name:	Srpk2 (NM_001106575) Rat Tagged ORF Clone
Tag:	Myc-DDK
Symbol:	Srpk2
Mammalian Cell Selection:	Neomycin
Vector:	pCMV6-Entry (PS100001)
E. coli Selection:	Kanamycin (25 ug/mL)



[View online »](#)

ORF Nucleotide  
Sequence:

>RR212194 representing NM\_001106575  
Red=Cloning site Blue=ORF Green=Tags(s)

TTTTGTAATACGACTCACTATAGGGCGGCCGGAATTCGTGACTGGATCCGGTACCGAGGAGATCTGCC  
GCC**CGCATCGCC**

ATGTCAGTTAACTCTGAGAAGTCGTCTCTTCAGAAAGGCCGAGCCTCAACAGAAAGCTCTTTAGTTC  
CTCCTCCTCCACCACCGCCACCGCCACCCACTGCCAGACCCCGTGCTCCAGAGCCAGAGGAGGAGAT  
TCTGGGGTCAGATGATGAGGAGCAGGAGACCCCGCGATTACTGCAAAGGTGGCTATCATCCAGTGAAA  
ATCGGAGACCTCTTCAATGGTCGTATCATGTCATTAGGAAGCTAGGATGGGGGCACTTTCCACCGTCT  
GGCTATGCTGGGATATGCAAGGGAAGAGGTTTGTGCCATGAAAGTTGTAAGGAGTGCACAGCATTATAC  
AGAGACAGCCTTGGATGAAATTAATTGCTCAAATGTGTTGAGAAAGTGACCCCACTGACCCAAACAAA  
GACATGGTAGTCCAGCTAATCGATGACTTCAAGATCTCAGGCATGAATGGGATACATGTCTGCATGGTCT  
TCGAAGTACTTGGTCACCATCTCCTCAAATGGATCATCAAGTCCAATATCAAGGCCTCCAGTCCGCTG  
TGTGAAGAGTATCATTGACAGGTCCTTACGGCTTAGACTATCTACACAGCAAGTGCAAGATAATCCAC  
ACTGATATCAAGCCGGAGAACATCCTGATGTGTGTGGACGGCGCTACGTGCGGAGAATGGCGGCCGAGG  
CTACGGAGTGGCAGAAAGCAGGTGCTCCTCCTCTTGGGTCTGCAGTGAATGCGCTCCACAGCAGAA  
ACCTATAGGAAAAATATCTAAAAACAAAAAGAAAAAGCTAAAAAGAAACAGAAAGAGGCAGGCTGAGTTG  
CTGGAGAAGCGCCTGCAGGAGATTGAGGAATTGGAGAGAGAAGCCGAAAGGAAAACTAGAAAGAGAA  
CCACCTCTGCAGAAGCTTCCAGTGAAGATGGAGAATGCCAGCCTGAGGTGAAACTGAAAGAGGCCGA  
GTTAGAGGACACAAGTGAAGAGAGACAGCAAAGGACAATGGTGAAGTTGAAGACCAGGAAGAGAAAAGAA  
GACACAGAGAAGGAAAACTGAGAAGGATGAAGATGATGTTGAACAGGAACTTGAGAACATAGACCCTA  
CGTGGATGGAGTCCCCTAAGGCCAACGGCCATATTGAAAAATGGCCTGTTTTACTGGAGCAGCAGTGGAA  
GGATGAAGAGGATGAGGAAGATGACTGTGCAAAACCCGAGGAGTATAACCTGGATGAACCAAATGCGGAG  
AGTGATTATACGTATAGCAGCTCCTATGAACAATTCAATGGTGAATTGCCAAACGACAGCCTAAGAGTC  
CAGAGTTTCCACACCGCTGTTTTCTGGGCCCTTAGAACCTGTGGCCTCTGACTCTGTGCTGTGAGGG  
ATCACCCTCACCAGCCAGAGGAAAGCAGTCCATCCCGTGACAGAAGCAGGACAGTTTCAGCCTCCAGT  
ACTGGAGACTTGCCAAAAACAAAAACCCGGCAGCTGACCTGTTGGTGAACCTCTGGATCCACAGAATG  
CAGATAAAATTAGAGTAAAAATTGCTGACCTGGGAAATGCTTGTGGGTGCATAAACATTTACAGAGGA  
TATCCAAACACGTCAGTATAGGTCCATAGAGGTTTTGATAGGAGCAGGCTACAGTACACCTGCAGACATT  
TGGAGTACAGCATGCATGGCATTGAGCTGGCAACAGGAGACTATTTGTTGCAACCGCATTCTGGGGAAG  
ACTATTCCAGAGATGAAGACCACATAGCCACATCATAGAGCTGCTAGGCAATATCCAAGGCACCTTGC  
TCTGTCTGAAAAATACTCCCGGAGTTCTCAACCGCAGAGGAGAACTGCGGCACATCACCAGCTGAAG  
CCCTGGAGCCTCTTTGATGTTCTTGTGGAAAAGTATGGCTGGCCCATGAAGATGCTGCACAGTTTACAG  
ATTTCTGATCCCAATGTTAGAGATGGTTCCAGAAAAACGAGCCTCAGCTGGCAATGCCTTCGGCATCC  
TTGGTTGAATTCT

**ACGCGT**ACGCGGCCGCTCGAGCAGAACTCATCTCAGAAGAGGATCTGGCAGCAAATGATATCCTGGATT  
ACAAGGATGACGACGATAAGGTTTAA

**Protein Sequence:** >RR212194 representing NM\_001106575  
Red=Cloning site Green=Tags(s)

MSVNSEKSSSSERPEPQQKAPLVPPPPPPPPPLPDPVPEPEEEILGSDDEEQEDPADYCKGGYHPVK  
 IGDLFNGRYHVIRKLGWGHFSTVWLCWDMQGRFVAMKVVKSQAQHYTETALDEIKLLKCVRESDPDPNK  
 DMVVQLIDDFKISGMNGIHVCMVFEVLGHLLKWIISNYQGLPVRVKSIIIRQVLQGLDYLHCKKIIH  
 TDIKPENILMCVDGAYVRRMAEAATEWQKAGAPPPSGSAVSTAPQQKPIGKISKNNKKKKKKQKRQAE  
 LEKRLQEIIEELEREAEKILEENTTSAEASSEQDGCQPEVKLKEAELEDTTEETAKDNGEVDEEKE  
 DTEKENTEKEDDVEQELLENIDPTWMSPKANGHIENGLFLEQLEDEEDEEDDCANPEEYNLDEPNAE  
 SDYTYSSSYEQFNGELPNGQPKSPEFPTPLFSGPLEPVASDSVLESGSPLTEPEESSPSRDRSRTVSASS  
 TGDLPKTKTRAADLLVNPLDPQNADKIRVKIADLGNACWVHKHFTEDIQTRQYRSIEVLIGAGYSTPADI  
 WSTACMAFELATGDYLFEPHSGEDYSRDEDHIAHIEELGSI PRHFALSGKYSREFFNRRGELRHITKLL  
 PWSLFDVLEKYGWPHEDAAQFTDFLIPMLEMVPEKRASAGECLRHPWLN

TRTRPLEQKLISEEDLAANDILDYKDDDDKV

**Restriction Sites:**

SgfI-MluI

**Cloning Scheme:**



**ACCN:** NM\_001106575

**ORF Size:** 2043 bp

**OTI Disclaimer:** The molecular sequence of this clone aligns with the gene accession number as a point of reference only. However, individual transcript sequences of the same gene can differ through naturally occurring variations (e.g. polymorphisms), each with its own valid existence. This clone is substantially in agreement with the reference, but a complete review of all prevailing variants is recommended prior to use. [More info](#)

**OTI Annotation:** This clone was engineered to express the complete ORF with an expression tag. Expression varies depending on the nature of the gene.

**Components:** The ORF clone is ion-exchange column purified and shipped in a 2D barcoded Matrix tube containing 10ug of transfection-ready, dried plasmid DNA (reconstitute with 100 ul of water).

**Reconstitution Method:**

1. Centrifuge at 5,000xg for 5min.
2. Carefully open the tube and add 100ul of sterile water to dissolve the DNA.
3. Close the tube and incubate for 10 minutes at room temperature.
4. Briefly vortex the tube and then do a quick spin (less than 5000xg) to concentrate the liquid at the bottom.
5. Store the suspended plasmid at -20°C. The DNA is stable for at least one year from date of shipping when stored at -20°C.

**RefSeq:** [NM\\_001106575.2](#), [NP\\_001100045.1](#)

**RefSeq Size:** 3648 bp

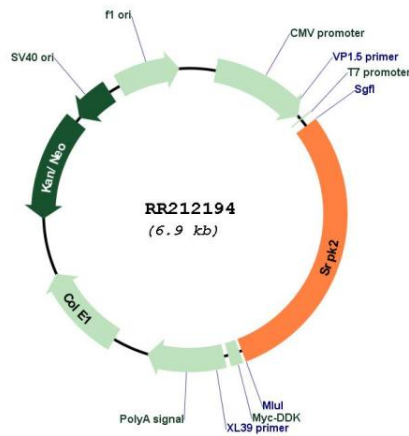
**RefSeq ORF:** 2046 bp

**Locus ID:** 296753

**Cytogenetics:** 4q11

**MW:** 76.9 kDa

**Product images:**



Circular map for RR212194