

## Product datasheet for **RR212155**

### Reg4 (NM\_001004096) Rat Tagged ORF Clone

#### Product data:

**Product Type:** Expression Plasmids  
**Product Name:** Reg4 (NM\_001004096) Rat Tagged ORF Clone  
**Tag:** Myc-DDK  
**Symbol:** Reg4  
**Vector:** pCMV6-Entry (PS100001)  
**E. coli Selection:** Kanamycin (25 ug/mL)  
**Cell Selection:** Neomycin  
**ORF Nucleotide Sequence:** >RR212155 representing NM\_001004096  
Red=Cloning site Blue=ORF Green=Tags(s)

TTTTGTAATACGACTCACTATAGGGCGGCCGGAATTCGTCGACTGGATCCGGTACCGAGGAGATCTGCC  
GCC**CGATCGCC**

ATGGCTTCCAAATGCGTGAGGCTACTCCTTCTGCTGAGCTGGGTAGCTGGCCCTGAAGTCTGAGTGATA  
TCTTGAGACCCAGCTGTGCTTCTGGATGGTTCAACTATAGTCCCCTGTTATGGTACTCCGGAAGT  
AAGAACTGGTCTCATGCTGAGCTGGAATGCCAGTCATATGGAACGGATCCCCTGGCATCTGTGTTG  
AATCCAAAGGAAGCCAGGTCATATCAAAGTACATAAAGTGGCTATCAGAGAAGCCTGCCTGTGTGGATTG  
GCCTGCATGACCCACAGAAGAATGCATCATGGCAGTGGATTGATGGGTCTACAAACCAGTACAGACCCTG  
GAGCCCCAGGACAAAAGTGAAGCCAGGCACTGCACTGAGATGAACCCCAAGGATAAATTTTAACTTGG  
AACAAAATGGATGCACCAAGCGCCAACACTTCTGTGCAAGTACAGGCCA

**ACGCGT**ACGCGGCCGCTCGAGCAGAACTCATCTCAGAAGAGGATCTGGCAGCAAATGATATCCTGGATT  
ACAAGGATGACGACGATAAGGTTTAA

**Protein Sequence:** >RR212155 representing NM\_001004096  
Red=Cloning site Green=Tags(s)

MASKCVRLLLLLSWVAGPEVLSDILRPSCASGWFNYSRSHCYGYFRKLRNWSHAELECQSYGNGLASVLSV  
NPKEASVISKYITGYQRSLPVWIGLHDPQKNASWQWIDGSTNQYRPPSPRTKSEARHCTEMNPKDKFLTW  
NKNNGCTKRQHFLCKYRP

**TR**TRPLEQKLISEEDLAANDILDYKDDDDKV

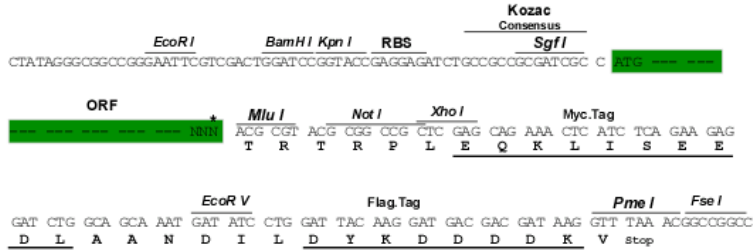
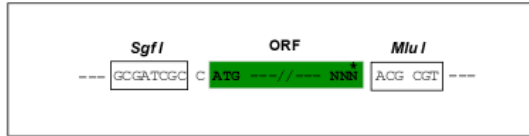
**Restriction Sites:** SgfI-MluI



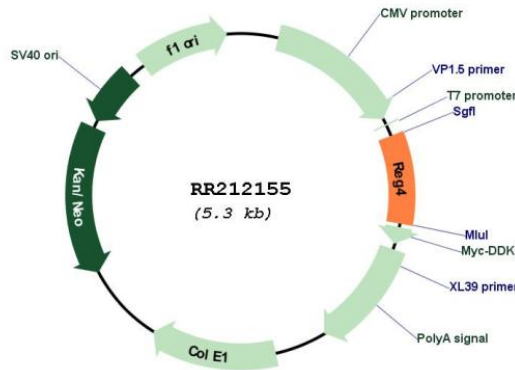
[View online »](#)

**Cloning Scheme:**

Cloning sites used for ORF Shuttling:



\* The last codon before the Stop codon of the ORF

**Plasmid Map:**

**ACCN:** NM\_001004096

**ORF Size:** 471 bp

**OTI Disclaimer:** The molecular sequence of this clone aligns with the gene accession number as a point of reference only. However, individual transcript sequences of the same gene can differ through naturally occurring variations (e.g. polymorphisms), each with its own valid existence. This clone is substantially in agreement with the reference, but a complete review of all prevailing variants is recommended prior to use. [More info](#)

<b>OTI Annotation:</b>	This clone was engineered to express the complete ORF with an expression tag. Expression varies depending on the nature of the gene.
<b>Components:</b>	The ORF clone is ion-exchange column purified and shipped in a 2D barcoded Matrix tube containing 10ug of transfection-ready, dried plasmid DNA (reconstitute with 100 ul of water).
<b>Reconstitution Method:</b>	<ol style="list-style-type: none"><li>1. Centrifuge at 5,000xg for 5min.</li><li>2. Carefully open the tube and add 100ul of sterile water to dissolve the DNA.</li><li>3. Close the tube and incubate for 10 minutes at room temperature.</li><li>4. Briefly vortex the tube and then do a quick spin (less than 5000xg) to concentrate the liquid at the bottom.</li><li>5. Store the suspended plasmid at -20°C. The DNA is stable for at least one year from date of shipping when stored at -20°C.</li></ol>
<b>RefSeq:</b>	<u>NM_001004096.1, NP_001004096.1</u>
<b>RefSeq Size:</b>	474 bp
<b>RefSeq ORF:</b>	474 bp
<b>Locus ID:</b>	445583
<b>UniProt ID:</b>	<u>Q68AX7</u>
<b>Cytogenetics:</b>	2q34
<b>MW:</b>	18.3 kDa
<b>Gene Summary:</b>	Calcium-independent lectin displaying mannose-binding specificity and able to maintain carbohydrate recognition activity in an acidic environment. May be involved in inflammatory and metaplastic responses of the gastrointestinal epithelium (By similarity).[UniProtKB/Swiss-Prot Function]