

Product datasheet for **RR212134**

Kif13b (NM_213626) Rat Tagged ORF Clone

Product data:

Product Type: Expression Plasmids
Product Name: Kif13b (NM_213626) Rat Tagged ORF Clone
Tag: Myc-DDK
Symbol: Kif13b
Vector: pCMV6-Entry (PS100001)
E. coli Selection: Kanamycin (25 ug/mL)
Cell Selection: Neomycin
ORF Nucleotide Sequence: >RR212134 representing NM_213626
Red=Cloning site Blue=ORF Green=Tags(s)

TTTTGTAATACGACTCACTATAGGGCGGCCGGGAATTCGTCGACTGGATCCGGTACCGAGGAGATCTGCC
 GCCCGATCGCC

ATGGGCGACTCCAAAGTAAAAGTGGCGGTACGGGTCGGCCAATGAACCGACGAGAAATTGACTTACATA
 CCAAATGTGTGGTGGATGTTGAAGCAAACAAAGTTATTTTGAATCCTATAAATACAAATCTTTCCAAGG
 AGATGCCCGGGCCAGCCAAAGATATTTGCGATGATCATTGTTTCTGGTCCATGGATGAGTCTGTCCGA
 GAGAAGTATGCAGGTCAAGATGATGTTTTCAAGTGCCTTGGGAGAACATTCTTCAGAATGCATTTGATG
 GCTACAATGCCTGTATCTTTGCCTATGGGCAGACAGGGTCTGGAAAATCTTACACTATGATGGGAACAGC
 CGACCAACCGGGTTAATCCCACGTCTCTGCAGTGGACTCTTTGAACGAACCCAGAAAGAAGAGAATGAA
 GAACAGAGTTTTAAAGTCAAGTGTCTGACATGGAATTTATAATGAAAAAGTCCGAGACCTTCTTGACC
 CCAAAGGAAGCCGACAAACGTTGAAAGTGAAGAGCAGTGTGTTGGGACCCTACGTGGATGGACTTTC
 TAAACTGGCTGTCACAAGCTACAAGGATATAGAGTCTCTGATGTCTGAGGGCAACAAGTCTCGGACAGTT
 GCTGCAACCAACATGAATGAAGAAAGTAGCCGTTCCCATGCAGTCTTCAAATTACCTGACACATACTC
 TGTATGATGTGAAGTCTGGGACATCTGGAGAGAAAGTGGCAAGCTGAGCTTAGTGGATTTAGCTGGCAG
 TGAACGAGCCACGAAAACCTGGAGCTGCGGGCGACAGGCTGAAGGAGGGCAGCAACATCAACAAGTCCCTC
 ACAACCTGGGTCTGGTTATCTCTGCCCTAGCCGATCAGGGTGTGGCAAAAACAAAAATAAATTTGTTT
 CCTATCGAGACTCAGTTCTCACATGGCTGCTCAAGGACAGTCTGGGAGGTAATAGCAAGACCGCCATGGT
 GGCCACTGTGAGCCAGCTGCTGATAACTATGATGAAACACTTTCAACCTGAGGTATGCAGATCGAGCA
 AAGCACATCATCAACCATGCTGTGGTGAATGAGGATCCTAATGCTCGGATATCCGAGATCTCCGTGAAG
 AGGTGGAGAAGCTCCGTGAGCAGCTGACTAAGGCAGAGGCAATGAAATCTCCAGAGCTGAAAGATCGCCT
 GGAAGAATCTGAGAACTCATCCAGGAAATGACTGTGACCTGGGAGGAGAACTAAGGAAAACCGAGGAG
 ATTGCGCAGGAGCGCAGAAGCAGCTTGAGAGCCTTGGCATATCTTTCAGACTTCTGGAATCAAAGTTG
 GGGATGACAAATGCTTCCCTGGTTAACTTGAATGCGGACCCAGCTCTGAATGAACTCTGGTGTACTACTT
 AAAGGAGCACACGCTGATAGGGTCAGCCAAATTCTCAGGACATCCAGCTCTGTGGGATGGGCATTCTCCCT
 GAGCATGGTATCATAGACATCATGCCCGAAGGCCAGGTCATGCTGACTCCTCAGAAGAATACCAGAACAT
 TTGTCAATGGGTCTTCTGTCTCCAGCCCTATCCAGCTACACCATGGGGACAGGATACTATGGGGAACA
 CCATTTCTCAGACTCAATCTGCCAAAAAGAAAAAGAAAGCAGAGCGAGAGGACGAGGAGCGTGAGGCA



[View online >](#)

TCTCTGAAAAATGACAGCAGTTCTGAGCAGCTGGATGCCGACGGCGACTCCTCCAGTGAGGTGTCCAGCG
 AAATCAACTTCAACTTTGAGTATGCACAGATGGAGGTGACCATGAAGGCTCTGGGCGCAATGACCCAAT
 GCAGTCCATATTGAGCAGCCTAGAACAGCAGCATGAGGAGGAGAAGCGGTCTGCTCTCGAGCGCCAGAGG
 CTCATGTACGAACACGAACTGGAACAGCTCCGAAGAAGGCTGTCTCCGGAGAGGCAGAATTGTGAGGTG
 TGGACCGCTTTCCTCCATTACCCAGTGCCAGCAGCGCTTGAGACAGTGGGCTGAGGAGAGAGAAGC
 AACATTGAATAACAGCTTGATGAGGCTGAGGGAGCAGATTGTAAGGCCAACCTGCTGGTACGGGAAGCT
 AGTTACATCGCAGAGGAGCTGGATAAAGAGAACCAGATATAAGTTACCCTCCAGATTCCAGCTCCAGTC
 TGGATGCCAATAGGAAGCGAGGCTCTCTCCTCAGTGAACCTGCCATCCAGGTGAGAAGAAAAGGAAAGG
 GAAGCAGATTTGGTCTTTGGAAAAGCTGGAACAGGCTTTTGGATATGAGAGACCTCTACCAGGAGTGG
 AAAGAATGTGAAGAAGACAGCCCGTTCCTGATCCTACTTCAAGCGTGTGACCCATTCTATGATGAGC
 AGGAAAATCATAGTCTCATCGGTGTGGCAATGTCTTCTGGAGACCCTGTTTTATGATGTGAAGTTACA
 ATATGCTGTGCCGATCATCAACCAGAAGGGAGAGGTGGCAGGCCGCTGCATGTGGAGGTGATGCGGCTC
 AGTGGGGCCATTGGGAGAGGATTGCAGGAGGAGACGATCCTACAGAGGTGAGTCTGAGAAGGAAGTCC
 AGGAGAACAGGCTGGTCTGCATGGTAAAATACTCCAGGCCACAGGTTGCCCTCAGCATCTGTGCCACTT
 TGTCTTCTGCAAATATGACTTCTGGGATCAGCAGGAGCCAGTACCCTGCTCCCGAAGTGGACACCTCT
 TCATCTCCACCAGCAAGGAGCCACAGTGTATGGTTGTGTTCGATCATTGAGCGAGTTCAGTGTTAACA
 TCACAGAAGACTTTATTGAATATCTCTCAGAAGGGGCCCTGGCCATTGAAGTGTATGGACATAAAATGAA
 TGATCCCCGAAAAACCCAGCCCTGTGGGATTTGGGAATCATCCAAGCAAAAACAAGGAGTCTTCGGGAC
 AGGTGGAGTGAAGTCAACAGAAAGTTGGAACTCTGGGTTCCAGTCTTGGAAACAGAATGAGAATGGCGAAT
 ACTGCCCTGTGGAAGTAATTGCTGCAAAAGATGTCCCAACAGGGGGGATCTTCCAGCTCCGACAGGGGCA
 GTCTCGGCGAGTCAAGTTGAAGTGAAGTCAAGTGCAGGAGTCAAGGACTTGGCCACTGATGGAAGAGTGC
 ATATTGTCGGTTGGCATTGGCTGTGTGAAAGTTAGACCGCTCAGTCCCCTAAGACCCACGAGAACATCC
 ATGAGAAGAGGAGGACATGGACAGTACCAGGATAGGGATTTAGAGCGGCTTCGTAGAAAATGGTCAA
 TGCATTAACCAAACGTCAGAATACTTGGATCAACAACCTGCAGAAGCTTGTGAGTAAAAATGACAAAAT
 GAGGATGATGCTGACCGAGAGGCACAGCTCTTGGAGATGCGGCTGACACTCACAGAGGAAAAGAAATGCGG
 TGATGGTGCCGTCTGCTGGGAGTGGCATTCCGGGGGCACCGGCAGAAATGGACCCAGTGCCTGGGATGGA
 GGCCACATTCCTGTTGATTTCTTACTTAAATGCGGATGATTCAGCTCTCAGGATAACCTTGATGAC
 CCAGAGGCCGGATGGGATGCTACCCTGACTGGGAAGAGGAGGAAGAGTCTTTGAGTTGCAGATTGTGA
 AGCATCACGATGGAGAGGTGAAGGCAGAGGCCCTCTGGGACTCTGCAGTGCACAACTGCCTCAGCTCAG
 TAAAGGCACACCTGCTGACGAGCGAGTGTCTCATCCTGAGAGTGGCAGTCCAGCTCAGCCACCCTGCA
 GACATGCAACTGGTCTACGCAAGAGGATTTGTGTCCATGTTTCATGGGCGCCAGGGCTTTGCTCAAAGTC
 TCCTCAAAAAGATGACTCATCGGAGCTCTATCCCTGGCTGTGGAGTGACCTTTGAAATTGCTCCAATAT
 TCCAGAGGTGGATGCCAGGGAGTGGAGGAGCGAGAGGCACTGGCAAGGATGGCTGCTAACGTGGAAAAC
 GCAGTCTCTGCTGACTCCGAGGCCGTATTGAGAAGTACTTGAGGAGTGTGCTGGCTGTGGAAAACCTCC
 TGACCCTAGATCGCTGCGTCAGGAAGTGGCCGTGAAGGAGCAGCTGACAGGAAAAGGGAAGTGAACCG
 GAGGAGTATCAGTCTCCTAGCATGAACAGATTGTGAGGAAGCCGACAGGAGCTTAGCCCATCCCACAGT
 CTAAGCAGCAACAAGCCCGTCCCCGAATCTTGGTGCAGCCTACTTTCTCAGATGCCCGGCAACAAGGA
 CAGAGGAGGCTCAGCAGGGCAGCCCTGGGCTAGTGGGCTTTGGAGTCTATGGTGAAGATGGCGGCCCC
 TACAGTAAAGATCTGCGACAAACCTGTGAGAGTGTCTTCCCTCCATCTACCATGGTACTACTCAGCCC
 CAAGAAGGGCAGGATGGACCTCCAGCCCTTGAGCGAAGCTTCAAGTGGCTACTTCTCTCACAGTGTCT
 CCACTGCCACCCTGTGAGAAACGCTCACCTTAGGCCTGGACACCAGGCCTCGGAGCCAGACACCTGG
 ATCCCCCCTGCCTGTGTGAGTACCCAAAGAGCCTGAGCTGGCTTTCTCTCTGCACACAGAGCCAT
 CCAACTGACCCAGAGGAGCCCCATATACCACCTGCAACTCCTACTCAAAGCACAGAGCTGGAGGTCCCCA
 GACCGCTCTCCTTTCTGACCCACACCTGCTGTGCCACGTCTCATTGAGAATCCGAAAGTGGCGCC
 CTCAGAGCTTACATCCTTACAGGCATGCTGGGGGAGCCTCCTCTGGAGCACAGGAGGACCCAGTGGTT
 TCAGAAGACCCGAGCCATGCTAGGGGACAGACTCTAGGGAGGCTAGAAGTACATCTGACTCTGAGGATG
 CCAGCGAAGTTCCTGAGTGGCTCAGAGAGGAGAGTATGTTGTTGTGGGACCAACAAGACGGGCATTGT
 AAGATATATTGGACCAACTGATTTCCAGGAGGGAACGTGGATTGGTGTGGAGCTGGACCTGCCTGCAGGA
 AAGAATGATGGTCCATTGGTGGAAAACAGTATTTGAGATGCAACCTGGTTACGGGCTGCTGGTGAAGC
 CAGGCCGGGTCCGAGGGCTGCAGGCACTGGGCGCAGGCGCAGTTGAGGGCTCCAGCCTCAGGGAGCCCC
 AGAGGCCCGCAGGAGTGTACTATCTCGGGCTCTGCCACCAACCTGGCTTCACTGACAGCTGCATTGGCC
 AAGGGAGACAGGAGCTACAAGAATCCTGAGAACCAGGAGTCTGGGCCAGC

ACGCGTACGCGGCCGCTCGAGCAGAACTCATCTCAGAAGAGGATCTGGCAGCAAATGATATCCTGGATT
ACAAGGATGACGACGATAAGGTTTAA

Protein Sequence:

>RR212134 representing NM_213626
Red=Cloning site Green=Tags(s)

MGDSKVKVAVRVRPMNRREIDLHTKCVVDVEANKVILNPINTNLSKGDARGQPKIFAYDHCWFMSDESVR
EKYAGQDDVFKCLGENILQNAFDGYNACIFAYGQTGSGKSYTMMGTADQPGLIPRLCSGLFERTQKEENE
EQSFKVEVSMEIYNEKVRDLLDPKGSRQTLKVRHSVLGPYVDGLSKLAVTSYKDIESLMSEGNSRVT
AATNMNEESSRSHAVFKITLTHTLVDKSGTSGEKVGLSLVDLAGSERATKTGAAGDRLKEGSNINKSL
TTLGLVISALADQGAGKNKNKFPYRDSVLTWLLKDSLGGNSKTAMVATVSPAADNYDETLSTLRYADRA
KHIINHAVVNEPNARIIRDLREEVEKLRQLTKAEAMKSPDKDRLEESEKLIQEMTVTWEKLRKTEE
IAQERQKQLESGLISLQTSQIKVGDCKFLVNLNADPALNELLVYYLKEHTLIGSANSQDIQLCGMGILP
EHGIIDIMPEGQVMLTPQKNTRTFVNGSSVSSPIQLHHGDRILWGNHFFRLNLPKPKKKAEREDERE
SLKNDSSSEQLDADGSSSEVSSEINFNFEYAQMEVTMKALGSNDPMQSISSLEQQHEEEKRSALERQR
LMYEHELEQLRRRLSPERQNCRGVDRLSFHSPSAQQRLRQWAEEREATLNNSLMRLREQIVKANLLVREA
SYIAEELDKRTEYKVTLQIPASSLDANRKRGSLLSEPAIQVRRKGGKQIWSLEKLENRLDMRDLYQEW
KECEEDSPVSRSYFKRADPFYDEQENHSLIGVANVFLETIFYDVKLQYAVPIINQKGEVAGRLHVEVMRL
SGAIGERIAAGDDPTEVSSEKEVQENRLVCMVKILQATGLPQHLCHFVCKYDFWDQQEPVTVAPEVDT
SSPTSKEPQCMVVFHDHCEFSVNITEDFIEYLSEGALAEVYGHKMNDPRKNPALWDLGIQAKTRSLRD
RWSEVTRKLEFWVQILEQNGEYCPVEVIAAKDVPTGGIFQLRQGQSRVQVEVKSQVESGTLPLMEEC
ILSVGIGCVKVRPLRSPKTHENIHEEEEDMSYQDRDLERLRKWLNALTKRQEYLDQQLQKLVSKHDKT
EDDADREAQLLEMRLTLTEERNAVMPVSAAGSIPGAPAEWTPVPGMEAHIPVVFLLDNLDDSSQNLDD
PEAGWDATLTGEEEEFFELQIVKHHDGEVKAESWDSAVHNCPQLSKGTPADERVFLILRVAVQLSHPA
DMQLVLRKRICVHVHGRQGAQSLLKKMTHRSSIPGCGVTFEIVSNIPEVDAQGVEEREALARMAANVEN
AASADSEACIEKYLRSLAVENLLTDLRLRQEVAVKEQLTGKGLNRRSISSPSMNRLSGSRQELSPSHS
LSSNKVPVPRILVQPTFSDARATRTEEAQQGSPGSPGSALESVMKMAAPTVKICDKPVRVSSPSTMVVTP
QEGQDGPSPSEASSGYFSHSVSTATLSETLTLGLDGTGLGSQTPGSPALCQVTQEPFLAFLSCTQSH
PTDPEEPHIPPATPTQSTELEVP RPPLSDPTPAVPTSPFRIRKVRPSELTSFTGMGGASSGAQEDPVV
SEDP SHARGQTLGRLEVTSDSEDASEVPEWLREGEYVVVGTNKTGIVRYIGPTDFQEGTWIGVELDLPAG
KNDGSI GGKQYFRCPNGYLLVRPGRVRAAGTGRRRSSGLQPQGAPEARRSATISGSATNLASLTAALA
KGRSYKNPENRKSAS

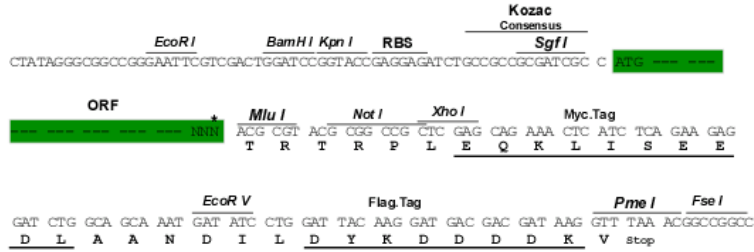
TRTRPLEQKLI SEEDLAANDILDYKDDDDKV

Restriction Sites:

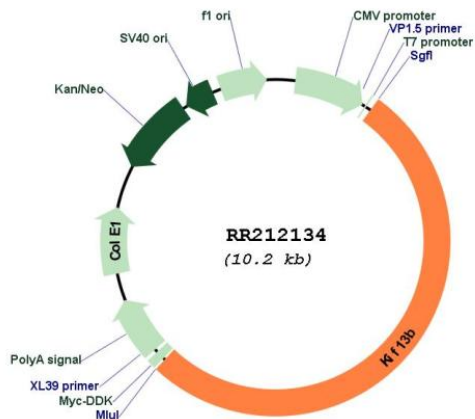
Sgfl-MluI

Cloning Scheme:

Cloning sites used for ORF Shutting:



* The last codon before the Stop codon of the ORF

Plasmid Map:


ACCN: NM_213626

ORF Size: 5301 bp

OTI Disclaimer: The molecular sequence of this clone aligns with the gene accession number as a point of reference only. However, individual transcript sequences of the same gene can differ through naturally occurring variations (e.g. polymorphisms), each with its own valid existence. This clone is substantially in agreement with the reference, but a complete review of all prevailing variants is recommended prior to use. [More info](#)

OTI Annotation: This clone was engineered to express the complete ORF with an expression tag. Expression varies depending on the nature of the gene.

Components: The ORF clone is ion-exchange column purified and shipped in a 2D barcoded Matrix tube containing 10ug of transfection-ready, dried plasmid DNA (reconstitute with 100 ul of water).

Reconstitution Method:

1. Centrifuge at 5,000xg for 5min.
2. Carefully open the tube and add 100ul of sterile water to dissolve the DNA.
3. Close the tube and incubate for 10 minutes at room temperature.
4. Briefly vortex the tube and then do a quick spin (less than 5000xg) to concentrate the liquid at the bottom.
5. Store the suspended plasmid at -20°C. The DNA is stable for at least one year from date of shipping when stored at -20°C.

RefSeq: [NM_213626.1](#), [NP_998791.1](#)

RefSeq Size: 5304 bp

RefSeq ORF: 5304 bp

Locus ID: 305967

Cytogenetics: 15p12

MW: 196.6 kDa

Gene Summary: human homolog has microtubule stimulated ATPase activity; binds the human discs large (Dlg) tumor suppressor homolog; may play a role in intracellular transport of Dlg [RGD, Feb 2006]