

Product datasheet for RR212123

Cps1 (NM_017072) Rat Tagged ORF Clone

Product data:

Product Type: Expression Plasmids
Product Name: Cps1 (NM_017072) Rat Tagged ORF Clone
Tag: Myc-DDK
Symbol: Cps1
Synonyms: cps; cps-1
Vector: pCMV6-Entry (PS100001)
E. coli Selection: Kanamycin (25 ug/mL)
Cell Selection: Neomycin
ORF Nucleotide Sequence: >RR212123 representing NM_017072
 Red=Cloning site Blue=ORF Green=Tags(s)

TTTTGTAATACGACTCACTATAGGGCGCCGGGAATTCGTCGACTGGATCCGGTACCGAGGAGATCTGCC
 GCC**CGATCGCC**

ATGACGAGGATTTTGACAGCATGCAAAGTGGTGAAGACTGAAGAGTGGCTTTGGTTTGGCCAATGTGA
 CTTGGAAGCGACAGTGGGACTTCTAGACCTGGCATCAGGCTCCTTTCTGTGAAGGCACAGACAGCACA
 CATTGTTCTGGAAGATGGAAGTAAAGTGAAGGGTACTCCTTTGGCCATCCCTCCTCGGTTGCTGGCGAA
 GTGGTTTTTAATACTGGCTTAGGAGGGTACTCGGAAGCACTTACTGATCCTGCCTACAAGGGGCAGATCC
 TCACCATGGCCAACCCATCATTGGGAATGGTGGGGCCCCTGATACAACGGCACGTGATGAAGTGGGACT
 GAATAAGTACATGGAGTCTGATGGAATCAAGGTGGCGGGTCTGCTGGTGTGAATTACAGTCATGACTAC
 AACCACTGGCTGGCCACCAAGAGTCTGGGTCAAGTGGTGCAGGAGGAGAAGGTCCTGCAATTTATGGAG
 TGGATACAAGAATGCTGACTAAAATAATTCGGGATAAGGGTACCATGCTTGGGAAGATTGAGTTTGGGG
 CCAGTCTGTGGACTTTGTGGATCCTAATAAGCAGAATTTGATTGCCGAGGTTTCAACCAAGGATGTCAAG
 GTGTTTGGCAAAGGAAACCCACGAAAGTGGTAGCCGTGGACTGTGGGATAAAAAACAATGTCATCCGCC
 TGCTAGTTAAGCGAGGAGCGGAAGTGCATTTGGTCCCTGGAATCATGACTTACCAGATGGCATATGA
 CGGACTTCTGATCGCTGGAGACCTGGGAACCCAGCTCTGGCACAGCCACTAATTCAGAACGTGAAGAAG
 ATTTTGGAGAGTGACCGCAAAGAGCCGTTGTTTGAATCAGTACAGGAAACATAATAACAGGATTGGCTG
 CTGGCGCCAAATCCTACAAGATGTCCATGGCCAACAGAGGACAGAACCAACCTGTTTTGAATATCACAAA
 CAGACAGGCTTTCATAACTGCTCAGAATCATGGCTATGCTCTGGACAACCCCTCCTGCTGGCTGGAAA
 CCACTGTTTGTCAATGTCAATGACCAACAATAAGGGGATTATGCATGAGAGCAAACCTTCTTCGCTG
 TGCAGTCCACCCAGAGGTGAGCCGGGGCCAACAGACTGAGTACCTATTTGATTCTTCTTCTCGCT
 GATAAAGAAGGGCAAAGGCACCACCATACCTCAGTCTGCCAAGCCAGCATTGGTGGCATCTCGAGTC
 GAGGTTTCCAAGTCTTATCCTAGGATCAGGAGGCTGTCCATTGGTCCAGGCAGGTGAATTTGATTACT
 CCGGATCTCAGGCTGAAAAGCCATGAAGGAAGAAAACGTCAAAAACAGTCTGATGAACCCGAACATTGC
 ATCCGTGCAGACCAACGAGGTGGGATTGAAGCAGGCAGATGCAGTCTACTTTCTCCCTATCACCCCCAG
 TTTGTCACAGAAGTTATCAAGGCTGAACGGCCCGATGGGTTAATCTGGGCATGGGTGGCCAGACAGCTC



[View online >](#)

TGAACTGTGGAGTGGAACTATTCAAGAGGGGTGTGCTCAAGGAATATGGTGTGAAGGTCTTGGGAACATC
GGTCGAGTCCATTATGGCCACAGAAGACAGGCAGCTTTTCTCAGACAAGCTGAATGAGATCAACGAGAAG
ATTGCTCTAGCTTTGCAGTGGAAATCAATGGAGGATGCCTTGAAGGCAGCAGACACCATTGGCTACCCTG
TGATGATTCGGTCTGCGTATGCTCTGGGTGGGTTAGGCTCCGGCATCTGTCCCAACAAGGAGACCTTAAT
GGATCTTGGCACAAGGCATTTGCTATGACCAACCAGATCCTGGTGGAGCGGTGAGTGACAGGTTGGAAA
GAAATAGAATATGAAGTGTCCGAGATGCGGATGATAACTGTGTACAGTCTGTAACATGGAGAATGTTG
ACGCCATGGGTGTTACACAGGTGATTCAGTTGTTGGCCCGGCCAGACCTCTCCAATGCAGAGTTG
CCAGATGTTGAGACGCACTTCAATCAATGTTGTTGCGCCACTTGGGCATTGTGGGTGAATGCAACATTCAG
TTTGCTCTTACCCCACTTCCATGGAATACTGTATCATTGAAGTGAATGCCAGGCTCTCCAGGATTCTG
CCCTGGCTCCAAGGCCACTGGCTACCCACTGGCGTTCATCGCAGCAAAGATCGCTCTAGGAATCCCACT
TCCAGAAATCAAGAATGTTGTGCTGGGAAGACCTCAGCCTGTTTCAACCTAGCCTGGATTACATGGTG
ACCAAGATTCTCGTGGGACCTTGACCGTTTTTCATGGAACATCCAGCCGAATTGGTAGCTCAATGAAAA
GTGTAGGCGAGGTCATGGCCATTGGTCGCACCTTTGAGGAAAGTTTCCAGAAGGCTCTGAGGATGTGCCA
TCCATCTGTGGATGGGTTCACTCCCGTCTCCCAATGAATAAGGAATGGCCAGCAAACCTGGATCTGAGG
AAGGAGCTGTCTGAACCTCCAGCACCCGCATCTATGCCATTGCTAAGGCCTTGGAAAACAACATGTCCC
TTGACGAAATCGTGAAGCTCACATCCATTGACAAGTGGTTTTTGTATAAGATGCGTGACATTTTAAACAT
GGATAAGACACTGAAAGGGCTTAACAGTGAAGTCTGTTACAGAAGAACTCTGAGACAGGCCAAAAGAGATT
GGGTTCTCAGACAAGCAGATTTCAAAATGTTTAGGACTGACCGAGGCTCAGACAAGAGAGCTGAGATTGA
AGAAAAACATCCACCCTTGGGTTAAACAGATTGATACATTGGCTGCAGAAATCCCATCAGTGACAAATTA
CCTGTATGTTACCTACAATGGCCAGGAGCAGCAGATCAAAATTTGATGAACATGGAATAATGGTGTGGGC
TGTGGCCCATACCAATTGGCAGCAGTGTGGAATTTGATTGGTGTGCTGTCTCCAGTATCCGCACACTGC
GCCAATTTGGCAAGAAGACGGTGGTGGTGAATTTGAACCCGGAGACTGTGAGCACTGACTTTGATGAGTG
TGACAAACTCTACTTTGAAGAGCTGTCTTTGGAGAGAATCCTAGATATCTACCACAGGAGGCATGTAAT
GGCTGCATCATATCAGTCGGGGGCCAGATTTCAAACAACCTTGGCGGTTCCGCTATACAAGAACGGTGTC
AGATCATGGGTACCAGTCTCTGCAGATCGATAGGGCTGAGGATCGCTCCATCTTCTCGGCTGTCTTAGA
TGAGCTGAAGGTGGCCAGGCTCCTTGGAAAGCTGTTAACTTTGAACGAGGCGCTGGAATTTGAAAAC
TCTGTGGGCTATCCCTGCTTACTGAGACCTTCTATGTTTTGAGTGGGTCTGCCATGAACGTGGTATTCT
CTGAGGATGAGATGAAAAGGTTCTTGGAGGGCCACTCGAGTCTCTCAGGAACACCCAGTGGTGTGAC
CAAGTTTATTGAGGGGCTCGGGAAGTGGAGATGGACGCTGTTGGCAAAGAAGGACGGGTCTATCCCAT
GCCATCTCTGAACATGTTGAAGATGCAGGTGTCCACTCAGGGGATGCCACACTGATGCTACCTACGCAGA
CCATCAGCCAAGGAGCCATTGAAAAGGTGAAGGATGCCACACGAAAGATTGCAAAGGCTTTTGCCATCTC
TGGGCCATTCAATGTTTCAGTTTCTGTCAAAGGAAATGATGTCTTGGTGATTGAGTGCAATCTGAGAGCC
TCTCGATCCTTCCCTTTGTCTCCAAGACTCTTGGGGTGGACTTCATTGATGTGGCCACCAAGGTGATGA
TCGGAGAGAGTGTGATGAGAAGCATCTACCCACACTGGAACAACCCATCATCCCCTCTGACTATGTTGC
CATTAAGGCTCCCATGTTTTCTGGCCCGACTGAGGGATGCTGATCCTATTCTGAGATGTGAGATGGCT
TCTACTGGAGAGGTGGCGTGTTTGGTGAAGGCATTATACAGCCTTCTAAAGGCAATGCTGTCCACAG
GGTTTAAGATACCTCAGAAGGGCATTCTGATTGGCATCCAGCAATCATCCGTCGAAGATTCTTGGTGT
TGCTGAGCAGTTACACAATGAAGGTTTCAAGCTTTTGGCACAGAAGCCACATCAGACTGGCTCAACGCC
AACAAATGTTCTGCCACCCAGTGGCTTGGCCATCTCAGGAAGGACAGAATCCAGCCTCTCTTCCATCA
GAAAGTTGATAAGAGACGGAAGCATTGACCTAGTGATTAACCTCCCAATAACAACACCAAAATTTGTCCA
TGATAATTATGTGATTCCGAGGACAGCTGTGGACAGTGAATGCTCTGCTCACCATTTCCAGGTGACC
AAACTTTTGTGAGGCTGTGCAGAAAGCTCGTACTGTGGACTCCAAGAGTCTGTTCCACTACAGGCAGT
ACAGCGCTGGAAGGCAGCA

ACGCGTACGCGGGCCGCTCGAGCAGAAACTCATCTCAGAAGAGGATCTGGCAGCAATGATATCCTGGATT
ACAAGGATGACGACGATAAGGTTTAA

Protein Sequence: >RR212123 representing NM_017072
 Red=Cloning site Green=Tags(s)

MTRILTACKVVKTLKSGFGLANVTSKRQWDFSRPGIRLLSVKAQTAHIVLEDGTMKMGYSFGHPSSVAGE
 VVFNTGLGGYSEAL TDPAYKGQILT MANPI I GNGGAPD T T ARDELGLNKYME SDGIKVAGLLVLNYSHDY
 NHWLATKSLGQWLQEEKVPAIYGV DTRMLTKIIRDKGTMLGKIEFEGQSVDFVDPNKQNLIAEVSTKDVK
 VFGKGNPTKVVAVDCG IKNVIRLLVKRGAEVHLPWNHDF T QMDYDGLLIAGGPNPALA QPLIQNVKK
 ILES DRKEPLFGI STGNIITGLAAGAKSYKMSMANRGNQPV LNI TNRQAFIT AQNHGYALDNTLPAGWK
 PLFVNVDQ TNEGIMHESK PFFAVQFHPEVSPGPTDTEYLFDSFFSLIKKGKGT TITSVL PKPALVASRV
 EVSKVLILGSGGLSIGQAG EFDYSGSQA VKAMKEENVKTVLMNPNIASVQTNEVGLKQADAVYFLPITPQ
 FVTEVIKAERPDGLILGMGGQTALNCGVELFKR GVLKEYGVKVLGTSVESIMATEDRQLFSDKLEINEK
 IAPSF AVESMEDALKAADTIGYPMIRSAYALGGLGSGICPNKETLMDLGT KAFAMTNQILVERSVTGWK
 EIEYEVVRDADDNCVTV CNMENV DAMGVHTGDSVVVAPAQ TLSNAEFQMLRRTSIN VVRHLGIVGECNIQ
 FALHPTSMEYCIIEVNARLSRSSALASKATGYPLAFIAAKIALGIPLPEIKNVVSGKTSACFEP SLDYMV
 TKIPRWLDRFHGTSSRIGSSMKSVGEVMAIGRTFEESFQKALRMCHPSVDGFT PRLPMNK EWPANL DLR
 KELSEPSSTRIYAIKALENNMSLDEIVKLT SIDKWFLYKMRDILNMDKTLKGLNSESVTETLRQAKEI
 GFSDKQISKCLGLTEAQTRELRLKKNIHPWVKQIDTLAAEYPSVTNYLYVTYNGQEHDIKFDEHGMVLG
 CGPYHIGSSVEFDWCAVSSIRTLRQLGKKT VVVVNCNPETVSTDFDECDKLYFEELSLERILD IYHQEACN
 GCII SVGGQIPNNLAVPLYKNGVKIMGTSPLQIDRAEDRSIFSAVLDELKVAQAPWKA VNTLNEALEFAN
 SVGYPCLLRPSYVLSGSAMNVV FSEDEMKRFL EEA TRVSQEHPPVLT KFI EGAREVEMDAVGKEGRVISH
 AISEHVEDAGVHSGDATLMLPTQTISQGAIEKVKDATRKIAKAF AISGPFNVQFLVKGNDVLVIECNLRA
 SRSFPFVSKTLGVDFIDVATKVMIGESVDEKHLPTLEQPIIPSDYVAIKAPMFSWPRLRDADPILRCEMA
 STGEVACFGEGIH TAF LKAMLSTGFKIPQKGILIGIQSFRP RFLGVAEQ LHN EGFKLFATEATSDWLN A
 NNVPATPVAWPSQEGQNP SLSSIRKLIRDG SIDLVINLPNNNTK FVHDNYVIRRTAV DSGIALLTNFQVT
 KLFAEAVQKARTVDSKSLFH YRQYSAGKAA

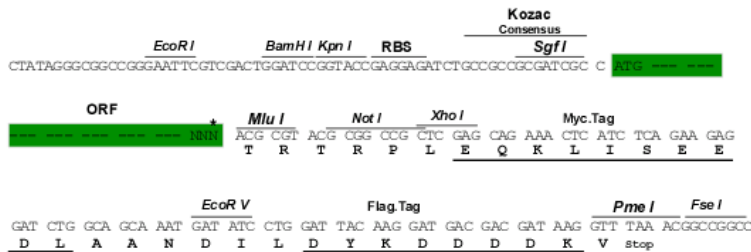
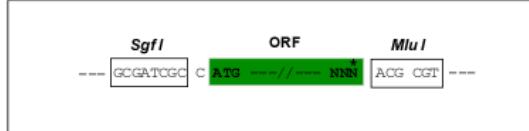
TRTRPLEQKLISEEDLAANDILDYKDDDDKV

Restriction Sites:

Sgfl-MluI

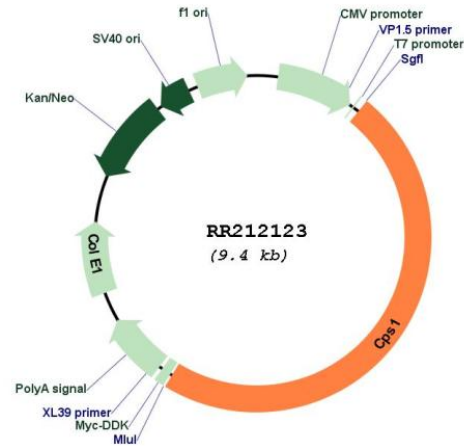
Cloning Scheme:

Cloning sites used for ORF Shuttling:



* The last codon before the Stop codon of the ORF

Plasmid Map:



ACCN: NM_017072

ORF Size: 4500 bp

OTI Disclaimer: The molecular sequence of this clone aligns with the gene accession number as a point of reference only. However, individual transcript sequences of the same gene can differ through naturally occurring variations (e.g. polymorphisms), each with its own valid existence. This clone is substantially in agreement with the reference, but a complete review of all prevailing variants is recommended prior to use. [More info](#)

OTI Annotation: This clone was engineered to express the complete ORF with an expression tag. Expression varies depending on the nature of the gene.

Components: The ORF clone is ion-exchange column purified and shipped in a 2D barcoded Matrix tube containing 10ug of transfection-ready, dried plasmid DNA (reconstitute with 100 ul of water).

Reconstitution Method:

1. Centrifuge at 5,000xg for 5min.
2. Carefully open the tube and add 100ul of sterile water to dissolve the DNA.
3. Close the tube and incubate for 10 minutes at room temperature.
4. Briefly vortex the tube and then do a quick spin (less than 5000xg) to concentrate the liquid at the bottom.
5. Store the suspended plasmid at -20°C. The DNA is stable for at least one year from date of shipping when stored at -20°C.

RefSeq: [NM_017072.2](#), [NP_058768.1](#)

RefSeq Size: 4503 bp

RefSeq ORF: 4503 bp

Locus ID: 497840

UniProt ID: [P07756](#)

Cytogenetics: 9q32

MW: 164.6 kDa

Gene Summary: catalyzes synthesis of carbamyl phosphate from NH₃, HCO₃, and 2ATP [RGD, Feb 2006]