

Product datasheet for **RR212086**

Zeb2 (NM_001033701) Rat Tagged ORF Clone

Product data:

Product Type: Expression Plasmids
Product Name: Zeb2 (NM_001033701) Rat Tagged ORF Clone
Tag: Myc-DDK
Symbol: Zeb2
Synonyms: Zfhx1b
Vector: pCMV6-Entry (PS100001)
E. coli Selection: Kanamycin (25 ug/mL)
Cell Selection: Neomycin
ORF Nucleotide Sequence: >RR212086 representing NM_001033701
Red=Cloning site Blue=ORF Green=Tags(s)

TTTTGTAATACGACTCACTATAGGGCGGCCGGAATTCGTCGACTGGATCCGGTACCGAGGAGATCTGCC
GCCGGATCGCC

ATGAAGCAGCCGATCATGGCGGATGGCCCCGGTGAAGAGGCGCAAACAAGCCAATCCCAGGAGGAAAA
ACGTGGTGAAGTATGACAACGTAGTGGACGAGGTTCCGAAACAGACGAGGAGGACAAGTCACATTGC
TGAGGATGACGGCATTGCAAACCTCTGGACCAGGAGACGAGTCCAGCTAGCATGCCAACCACGAGTCC
TCCCCACACATGAGCCAAGGCCTGCTACCAAGAGAGGAAGAAGACGAGATAAGGGAGAGCGTTGTGG
AACACAGCTGGCACAGCGGTGAGATTCTGCAAGCCTCTGTAGACGGTCCAGAAGAAATGAAGGAGGATTA
TGATGCTCTGGGGCCAGAAGCCACGATCCAGACCACAATTAACAATGGTACAGTTAAGAATGCAAAATTC
ACATCAGACTTTGAGGAATACTTTGCCAAAAGAAAAGTGGAGGAAAGAGATGGCCACGCAGTCAGCATTG
AAGAGTACCTTCAGCGAAGCGACACGGCCATTATTTACCCAGAAGCCCTGAGGAGCTGTCTCGCCTTGG
CACGCCAGAGGCCAATGGGCAAGAAGAAAATGACCTGCCACCTGGAATCCAGATGCTTTTGCCCAACTG
CTGACCTGCCCTACTGCGACCGCGCTACAAGCGCTTGACATCGCTGAAGGAGCACATCAAGTACCGCC
ACGAGAAGAATGAAGAGAACTTTCTGCCCTCTTTGTAGCTACACGTTCCGCTACCGCACCCAGCTCGA
AAGGCATATGGTGACGCAAGCCAGGGACAGATCAGCACCAAAATGCTAACCCAAAGGAGCAGGTAACCGC
AAGTTCAAGTGCACAGAGTGTGGCAAGGCTTCAAGTACAAGCACCACTGAAAGAACACCTGAGAATTC
ACAGTGGTGAAAAACCTTACGAATGCCCAACTGCAAGAAACGCTTCTCTCATTCTGTTTCTACAGTTC
ACATATCAGCAGCAAGAAATGATTGGTTAATCTCAGTAAATGGCCGAATGAGAAACAATCAAGACG
GGTTCTTCCCCTAATTCTGTTTCTTCTCTCTACTAAGTAAAGTAAACAGAACCACTAGACTT
AAAATGGAAAACCACTTAGCATGTCTGAGCAGACGGGCTTACTTAAGATTAACAGAACCACTAGACTT
CAATGACTATAAAGTTCTTATGGCAACACATGGGTTTAGTGGCACTAGTCCCTTTATGAACGGTGGGCTT
GGAGCCACCAGCCCTTAGGTGTGCACCATCTGCTCAGAGTCCAATGCAGCACTTAGGTGTAGGTTAG
AAGCCCTTACTTGGATTTCCCACTATGAATAGTAATCTGAGTGAGGTACAAAAGGTTCTACAGATTGT
GGATAATACGGTTTCTAGGCAAAAGATGGACTGCAAGACTGAAGACATTTCAAAGTTGAAAGTTACCAC
ATGAAGGATCCATGTTCTCAGCCAGAAGAACAAGGGTTACTTCTCCTAGTATTCCAGCCGTCGGTCTTC



[View online >](#)

CAGTAGTGAGTCATAATGGTGCCACTAAAAGTATCATTGACTATACCTTAGAGAAAAGTCAACGAAGCCAA
AGCTTGCCTCCAGAGCTTGACTACTGACTCAAGGAGACAGATCAGCAATATAAAGAAAAGAGAAGCTACGT
ACTTTGATAGATTTGGTCACCGATGATAAAATGATTGAGAACCACAGCATACCCACTCCGTTTTTCATGCC
AGTTCTGTAAAGAAAGCTTCCCAGGTCCTATCCCCCTGCATCAGCATGAACGCTACCTGTGTAATAATGAA
TGAAGAGATCAAGGCGGTCTGCAACCTCACGAAAACATAGTCCCAACAAGCTGGGGTGTTCGTTGAC
AATAAAGCCCTCCTCTTGTCATCTGTACTTTCTGAGAAAGGACTGACAAGCCCGATCAACCCGTACAAGG
ACCACATGTCTGTACTCAAAGCATACTATGCTATGAATATGGAACCCAACCTCTGATGAACCTGTAATAAT
CTCCATTGCTGTGGGCCTTCTCAGGAGTTTGTGAAGGAATGGTTTGAGCAGAGAAAAGTCTACCGATAC
TCCAGTCCAGGTCACCATCACTGGAGAGGAACTCCAAGCCCTTAGCTCCCAACAGCAACCCACCACAA
AAGACTCTTTGTTACCCAGGTCTCCTGTAAAACCTATGGACTCAATCACGTCACCATCTATAGCAGAACT
CCACAACAGTGTACGAGTTGTGATCCTCCTCAGGCTAACAAAATCTCCACTTCACCAATACTAAA
GCAGTTGATAAACTGGACCCTCAAGGAGTAACACTCCTTCTCCTTTAAATCTTTCTCCACGTCTTCTA
AAAACCTCCACAGTAGCTCGTACACTCAAATAGCTTCTCTTCCGAGGAGCTGCAGGCTGAGCCGTTGGA
CCTGTCTATTACAAAACAATGAGAGAGCCAAAAGTATTATAGCCACAAAGAACAAGACGAAAGCTACT
AGCATAAGTTTAGACCACAACAGTGTCTTCTCCTCTGAAAACCTCAGATGAACCTCTGAATTTGACTT
TTATCAAGAAAGAGTTTTCAAATTTAATAACCTGGACAATAAAAAGCACTAACCCGTGTGTCGGCATGAA
CCCATTTAGTGCCAAGCCTTTATACACAGCTCTTCCACCACAGAGCGCATTTCCCCCTGCCACTTTCATG
CCACCAGTCCAGACCAGCATCCCCGGGCTACGACCATACCAGGGCTGGATCAGATGAGCTTCTACCAC
ATATGGCCTATACCTACCAACGGGAGCAGCTACCTTTGCTGATATGCAGCAAAGGAGGAAATACCAGCG
GAAACAAGGATTTCAAGGAGAATTGCTTGATGGAGCACAAGACTACATGTCGGGCCTAGATGACTTGACA
GACTCCGATTCCTGTCTGTCTCGAAAGAAGATAAAGAAGACAGAAAGTGGCATGTATGCATGTGACTTAT
GTGACAAGACATTCAGAAAAGCAGTTCCTTCTGCGACATAAATACGAACACACAGGAAAGAGACCACA
CCAGTGTGAGATTTGTAAGAAAGCGTTCAAACACAAACACCACCTTATCGAGCACTCGAGGCTGCACTCG
GGCAGAGAAGCCCTATCAGTGTGACAAATGTGGCAAGCGCTTTTCACACTCGGGCTCCTACTCGCAGCACA
TGAATCACAGGTACTCCTACTGCAAGCGGGAGGCGGAGGAGCGGGAAGCGGCCGAGCGCAGGCACGAGA
GAAAGGGCACTTGAACCCACCGAGCTGCTGATGAACCGGGCTTACTTGACAGAGCATCACCCCTCAGGGG
TACTCTGACTCGGAGGAGAGGGAGAGCATGCCAGGGATGGCGAGAGCGAGAAGGAGCACGAGAAGGAGG
GCGAGGAGGGCTATGGGAAGCTGCGGAGAAGGGACGGCGACGAGGAGGAAGAGGAGGAAGAGGAAGAAAG
TGAAAATAAAAGTATGGATACGGATCCCGAGACGATACGGGATGAGGAGGAGACTGGGGTCACTCAATG
GATGACAGTTCAGAGGATGGGAAAATGGAACCAATCAGACCACGAGGAAGACAATATGGAAGACGGCA
TGGA

ACGCGTACGCGGCGCTCGAGCAGAACTCATCTCAGAAGAGGATCTGGCAGCAAATGATATCCTGGATT
ACAAGGATGACGACGATAAGGTTTAA

Protein Sequence:

>RR212086 representing NM_001033701
 Red=Cloning site Green=Tags(s)

MKQPIMADGPRCKRRKQANPRRKNVVNYDNVVDAGSETDEEDKLHIAEDDGIANPLDQETSPASMPNHES
 SPHMSQGLLPREEEEDIRESVVEHSHWSGEILQASVDGPEEMKEDYDALGPEATIQTINNGTVKNANC
 TSDFEFYAKRKLLEERDGHAVSIEEYLQRSDTAIIYPEAPEELSRGTPEANGQEENDLPPGTPDAFAQL
 LTCPYCDRQYKRLTSLKEHIKYRHEKNEENFSCPLCSYTFAYRTQLERHMVTHKPGTDQHQLMTQGAGNR
 KFKCTECGKAFKYKHHLKEHLRIHSGEKPYECPNCKKRFSHSGSYSSHISKKCIGLISVNGMRNNIKT
 GSSPNSVSSSPTNSAITQLRNKLENGKPLSMSEQTGLLKIKTEPLDFNDYKVL MATHGFGTSPFMNGGL
 GATSPLGVHPSAQSPMQHLGVGLEAPLLGFPTMNSNLSEVQKVLQIVDNTVSRQKMDCKTEDISKLGKYH
 MKDPCSQPEEQVTPSPSIPAVGLPVVSHNGATKSIIDYTLKVNKAEKACLQSLTDSRRQISNIKKEKLR
 TLIDLVTDDKMIENHSIPTFSCQFCESFPGPIPLHQHERYLCKMNEEIKAVLQPHENIVPNKAGVVD
 NKALLLSSVLSEKGLTSPINPYKDHMSVLKAYYAMNMEPNDELLKISIAVGLPQEFVKEWFEQRKVYQY
 SSSRSPSLERNKPLAPNSNPTTKDSSLRSPVKPMDSITSPSIAELHNSVTSCDPLRLTKSSHFTNTK
 AVDKLDHSRNTPSPLNLSSTSSKNSHSSYTPNSFSSEELQAEPLDLSLPKQMREPKSIATKNTKAT
 SISLDHNSVSSSENSDEPLNLTFIKKESNSNNLDNKSTNPVFGMNPFSKPLYALPPQSAFPATFM
 PPVQTSIPGLRYPGLDQMSFLPHMAYTYPTGAATFADMQRKRYQRKQGFQGEILLDGAQDYMSGLDDL
 DSDSCLSRKKIKKTESGMYACDLCDKTFQKSSLLRHKYEHTGKRPHQCQICKKAFKHKHHLIEHSRLHS
 GEKPYQCDKCGKRFSHSGSYSQHMNHRYSYCKREAEEREAAEREAREKGHLEPTELLMNRAYLQSI TPQG
 YSDSEERESMPRDGESEKEHEKEGEGYGLRRRDGDEEEEEEEEESENKSMDDTPETIRDEEETGDHSM
 DSSSEDGKMETKSDHEEDNMEGME

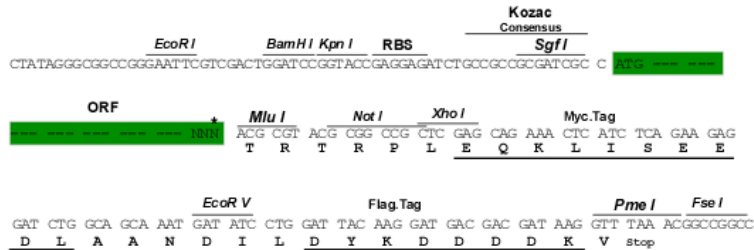
TRTRPLEQKLISEEDLAANDILDYKDDDDKV

Restriction Sites:

Sgfl-MluI

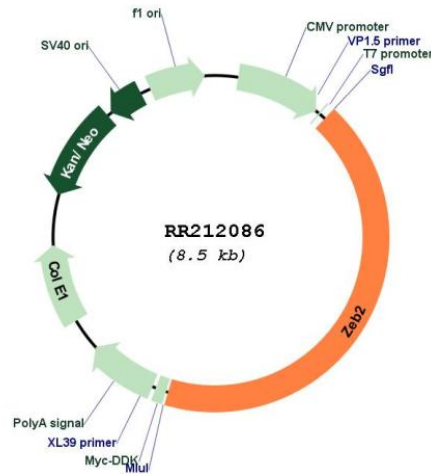
Cloning Scheme:

Cloning sites used for ORF Shutting:



* The last codon before the Stop codon of the ORF

Plasmid Map:



ACCN: NM_001033701

ORF Size: 3645 bp

OTI Disclaimer: The molecular sequence of this clone aligns with the gene accession number as a point of reference only. However, individual transcript sequences of the same gene can differ through naturally occurring variations (e.g. polymorphisms), each with its own valid existence. This clone is substantially in agreement with the reference, but a complete review of all prevailing variants is recommended prior to use. [More info](#)

OTI Annotation: This clone was engineered to express the complete ORF with an expression tag. Expression varies depending on the nature of the gene.

Components: The ORF clone is ion-exchange column purified and shipped in a 2D barcoded Matrix tube containing 10ug of transfection-ready, dried plasmid DNA (reconstitute with 100 ul of water).

Reconstitution Method:

1. Centrifuge at 5,000xg for 5min.
2. Carefully open the tube and add 100ul of sterile water to dissolve the DNA.
3. Close the tube and incubate for 10 minutes at room temperature.
4. Briefly vortex the tube and then do a quick spin (less than 5000xg) to concentrate the liquid at the bottom.
5. Store the suspended plasmid at -20°C. The DNA is stable for at least one year from date of shipping when stored at -20°C.

RefSeq: [NM_001033701.1](#), [NP_001028873.1](#)

RefSeq Size: 3648 bp

RefSeq ORF: 3648 bp

Locus ID: 311071

Cytogenetics: 3q12

MW: 136.5 kDa