

## Product datasheet for **RR212066**

### Anks1a (NM\_001107613) Rat Tagged ORF Clone

#### Product data:

**Product Type:** Expression Plasmids  
**Product Name:** Anks1a (NM\_001107613) Rat Tagged ORF Clone  
**Tag:** Myc-DDK  
**Symbol:** Anks1a  
**Synonyms:** Anks1  
**Vector:** pCMV6-Entry (PS100001)  
**E. coli Selection:** Kanamycin (25 ug/mL)  
**Cell Selection:** Neomycin  
**ORF Nucleotide Sequence:** >RR212066 representing NM\_001107613  
Red=Cloning site Blue=ORF Green=Tags(s)

TTTTGTAATACGACTCACTATAGGGCGGCCGGGAATTCGTCGACTGGATCCGGTACCGAGGAGATCTGCC  
 GCCGGATCGCC

ATGGGGAAGGAGCAGGAGCTGCTGGAGGCGGCCCGCACCCGGGCACCTCCCGGCCGTGGAGAAGCTGCTGT  
 CCGGGAAGCGGCTCTCCTCCGGTTCGGCGGCGGCGGCGGCGGCTCCGGCAGCGGCGGCGGCTCCGG  
 GGGCGGCGGCTCGGCTCTCCAGCCACCTCTCTCCAGTCTGCTGAGCATGTGGAGAGGGCCGAATGTG  
 AACTGCGTAGATAGCACCAGGCTACACGCCACTACACCAGCTGCTTTGAATGGCCACAGGGATGTGGTCC  
 AGGTTCTTCTGAGGAACGATGCGCTGACCAACGTTGCTGACTCGAAAGGCTGCTACCCACTGCACTTGGC  
 AGCGTGGAAAGGAGATGCCAGATAGTGCAGGCTGCTCATCCACCAGGGGCCCTCGCACACCAGAGTCAAC  
 GAACAGAAACAACGACAACGAGACAGCCCTGCACTGCGCGGCACAGTACGGCCACACGGAGGTAGTGAAGG  
 CCCTGCTGGAGGAGCTCACGGACCCACCATGCGCAACAACAATTTGAAACCCCGCTGGACCTGGCGGC  
 GCTGTACGGGCGGCTGGAGGTGGTGAAGCTGCTGCTGAGTGCACCCCAATCTCCTGAGCTGCAGCACT  
 AGGAAGCACACCCCTGCACTTGGCAGCAAGGAACGGCCACAAGGCCGTGGTGCAGGTGCTGCTGGACG  
 CCGCATGGACAGCAACTACCAGACGGAGATGGGCAGTGTGTCATGAAGCTGCTTTGTCGGCAAGAC  
 CGATGTGGTGCAATCCTGCTGGCTGCAGGAATCGACGTCACATCAAGGACAACCGTGGCCTGACTGCC  
 CTTGACTGTCCGAGACCTGCCTTCTCAGAAGAGCCAGCAGATAGCTGCGCTGATTGAAGACCACATGA  
 CCGGAAGAAGAAGTGTGAAAGATGTAGACAAGACCTCCACAGCCAGCTACCTCTCCTCTCCTGCACAGA  
 CGCCATAGCCCCAAAGTCTCTGGGGAGTGTGGAGAAGGCAGTACTGAGCCGACTCTTGATTCTGACATC  
 CTCGCTGAGGAGGAGGGTCCCTACGAGGCGCTTACAACGCTGTGTCCTGCCATTCTTGACAGCACGG  
 CCAGTGGGCGATCGTCGGACAGAGACTCCGTGAACAAGGAGGCCGAGGCCACCGAGCACGGGCTGCTGG  
 AAGGGAACGCCGCCACCTCCAGCAAAGCCGCCCTGATGAAGAGGAGGAAGAGCGCGTAGATAAGAAG  
 TATCTTCCCTTGGCAGCTTCTGAGGGCCTGGCTTTGAGACCCAGAATGCAGGGCAGTGCSCCCAGGAAG  
 AGGAGGAGCACCCATATGAGCTGCTGCTCACAGCAGAGACCAAGAAGCTGGGGACACAGACGGGAGGAC  
 TGAAGACCACAGGAGAGCGGGCAGCCGGAGCCAGGACTCTGTGGAGGGGCAGGACGGGCAGGTCCCG  
 GAGCAGTTCTCAGGTCTCCTCCACGGCTCCTCCCAGTGTGTGAGGTGGGGCAGGACCCTTTCAGTTGC



TTACTGTCCCCAGCCAGAACCACCCCGAGTCTCCAGCAGGACGCCTGCCAGGAGGCCAGCATGCAGCT  
 AGAGGAGCCGGGCGAGCAAAGCACTGGAGCCCCGAGCCTGGCATCCTGGACAAAGCAAGAGAGCGGGC  
 TTGTCCGACGGCCTGACGGCCCTGGCCAGCAGAACATACCTCGACGCCTGACTCACACAGTACCTCTGC  
 ACCCTGCTGGTCCGAGGAAGAAGACGGGTCCAGAAGCAGAGCCCCTCCCACCAGCAAGCCAAAGCGGA  
 GCTCAAACCTCAGCCGAGTTTGTCTAAGTCTGACTCTGACCTCCTGACCTGCTCCCCACGGAGGACACC  
 ACAATGGGAGCCGACGAGTCCCTGTCCAACCTGCAGCATCGGAAGAAGAGGCTAGAGAAGTCGCCTT  
 CCTTTGCCTCCGAGTGGGATGAGATTGAGAAGATCATGAGCTCCATCGGCGAAGGGATTGACTTCTCTCA  
 GGAGCAGCAGAAGATCTCAGTTCTCGACGCTGGAGCAGAGCGTCGGGGAGTGGAGTGGAGTCGATCGGC  
 CTGCAGCAGTATGAGAGCAAGCTGCTACTGAACGGCTTTGACGATGTCGGCTTCTGGGGTCTAATGTGA  
 TGAAGACCAGGACCTGAGGGAGATTGGCATCAGTGACCCCCAGCACCAGCGGAAGCTGCTGCAGGCTGC  
 ACGCTCCTTGCCCAAGGTGAAGGCCCTTGGCTATGATGGGGTCAGCCCCGCTCAGTGCCCTCCTGGCTG  
 GACTCGCTGGGGTGCAGGACTATATCCACTCTTCTGTCCAGTGGCTACAGCTCCATCGACACCGTGA  
 AGAACCTCTGGGAGCTAGAGCTCGTCAATGTCTGAAGTCCACCTGCTGGGCCACCGCAAACGCATTAT  
 CGCTCGCTTGGCAGAGGCCCTATGAGGAGCCGCCCAAGCCTCCGAGGTTTTCCAGCTAAGATGC  
 CAGGATTAATCTCCAGACATCATCCCGCTCAGCCAGAATGATTCTGTACAGGGCGGTCCGAGACC  
 TGCTGTGCCCTCGGTAGACACAAGCAGAAGCGGCATGACAGCTGCATGACCCGGGACCACCTCTCG  
 AGCAGAACAACCTCCGGGTCCAGGAGGAGCCAGCGAGAGCAAGCTGACCTCCGTCCGCCACGCTGGCT  
 GCCCCTACGCCCTGTACAAAGCTGGCAGCACCAGCGCCGAAAAGCTCATCTTGAATCCTGTGGTTATG  
 AGGCCAATTACCTGGGCTCCATGCTGATCAAGGATCTGCGCGGACCGAGTCCACCAAGATGCCTGTGC  
 CAAAATGCGGAAGTCGACGGAGCACATGAAGAAGATCCCACCATCATCTGTCCATCACATAAAGGT  
 GTCAAGTTCATGGACGCTCCAACAAGAATGTCATCGCCGAGCATGAGATCCGGAACATTTCTGCGCCG  
 CGCAGGACCCGGAGGACCTCTGTACCTTTGCCTACATCACCAAGGACCTGCAGACCAGCCACCCTACTG  
 CCATGTTTTAGCACCGTGGATGTGAACCTGACCTACGAGATCATCTGACCTGGGGCAGGCACTTGTAG  
 GTGGCCTATCAGCTGGCCTGCAGGCCAGAAATCCAGGACCATGGCGGCTCTGCAGTCTCAATGATTG  
 AGACAAAATCTTCAAACCGGTGCCTAAGCCTCGGGTCCGATGAGGAAGTCTGCACTGGAACCTCCCGA  
 TTCTGACCAAGAGGCCCGTCCACGCTAGTGTCTTCTGGATCGTGGACCAAAGCCAGACTCGAAGCGG  
 AGCCTCAGACCAAC

AGCGGACCGACGCGTACGCGGCCGCTCGAGCAGAACTCATCTCAGAAGAGGATCTGGCAGCAAATGATATCC  
 TGGATTACAAGGATGACGACGATAAGGTTTAA

**Protein Sequence:**

>RR212066 representing NM\_001107613  
 Red=Cloning site Green=Tags(s)

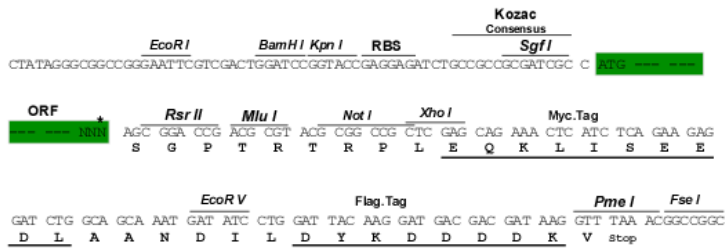
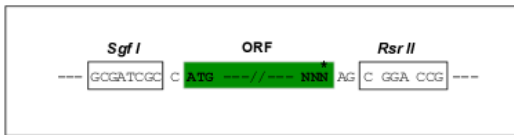
MGKEQELLEAARTGHLPAVEKLLSGKRLSSGFGGGGGGSGSGGGGGLGSSSHPLSLLSMWRGPNV  
 NCV DSTGYTPLHHAALNGHRDVEVLLRNDALTNVADSKGCYPLHLAAWKGDAQIVRLLIHQGPSHTRVN  
 EQNNDNETALHCAAQYGHTEVVKALLEELTDPTMRNKFETPLDLAALYGRLEVVKLLLSAHPNLLSCST  
 RKHTPLHLAARNGHKAVVQVLLDAGMDSNYQTEMGSALHEAALFGKTDVVQILLAAGIDVNIKDNRLTA  
 LDTVDRDLP SQSQQIAALIEDHMTGRRSVKDVKTSTAQLPLL SCTDAIAPKSLGSVEKAVTEPTLDSDI  
 LAEEEGPYEALYNAVSCHSLDSTASGRSSDRDSVNKEAEATGARAAGERPPPPAKPPPEEEEEERVDK  
 YLPLAASEGLALRPMQGSAPQEEEEHPYELLLTAETKKLGTTDGRTEHDRQSGGSRSDSVVEGQDQVP  
 EQFSGLLHGSSPVCEVGQDPFQLLTVPSQNHPESSQDACEASMQL EEPGEQSTGAPQPGILDQSKRAG  
 LSAGLTALASRTYLDALTHTVPLHPAGAEEDGSRSRAPPTSKPKAELKLSRSLSKSDSLLTCSPTEDT  
 TMGSRSESLNCSIGKKRLEKSPFASEWDEIEKIMSSIGEGIDFSQEQQKISGSRLEQSVGEWLESIG  
 LQYYESKLLLNGFDVRF LGSNMEDQDLREIGISDPQHRRKLLQAARSLPKVKALGYDGVSPASVPSWL  
 DSLISQTS SPLSQNDSC TGRSADLLPSVDTSRRRHDSLHDPGTT SRAEHFRVQEEPSESKLTLRPPSLA  
 APYAPVQSWQHRPEKLIFESCGYEANYLGSMLIKDLRGTESTQDACAKMRKSTEHMKIPTIILSITYKG  
 VKFMDASNKNVIAEHEIRNISCAAQDPEDLCTFAYITKDLQTS HHYCHVFSTVDVNLTYEIIILTLGQAFE  
 VAYQLALQAQKSR TMAASAASMIETKSSKVPKPRVGMRSAL EPPDSQEQEAPSHASVSWIVDPKPSKR  
 SLSTN

SGPTRRTRPLEQKLI SEEDLAANDILDYKDDDDKV

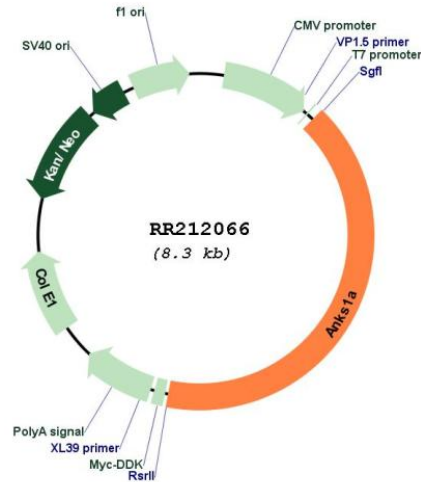
Restriction Sites: SgfI-RsrII

Cloning Scheme:

Cloning sites used for ORF Shuttling:



\* The last codon before the Stop codon of the ORF

**Plasmid Map:**


**ACCN:** NM\_001107613

**ORF Size:** 3375 bp

**OTI Disclaimer:** The molecular sequence of this clone aligns with the gene accession number as a point of reference only. However, individual transcript sequences of the same gene can differ through naturally occurring variations (e.g. polymorphisms), each with its own valid existence. This clone is substantially in agreement with the reference, but a complete review of all prevailing variants is recommended prior to use. [More info](#)

**OTI Annotation:** This clone was engineered to express the complete ORF with an expression tag. Expression varies depending on the nature of the gene.

**Components:** The ORF clone is ion-exchange column purified and shipped in a 2D barcoded Matrix tube containing 10ug of transfection-ready, dried plasmid DNA (reconstitute with 100 ul of water).

**Reconstitution Method:**

1. Centrifuge at 5,000xg for 5min.
2. Carefully open the tube and add 100ul of sterile water to dissolve the DNA.
3. Close the tube and incubate for 10 minutes at room temperature.
4. Briefly vortex the tube and then do a quick spin (less than 5000xg) to concentrate the liquid at the bottom.
5. Store the suspended plasmid at -20°C. The DNA is stable for at least one year from date of shipping when stored at -20°C.

**RefSeq:** [NM\\_001107613.3](#), [NP\\_001101083.1](#)

**RefSeq Size:** 5616 bp

**RefSeq ORF:** 3378 bp

**Locus ID:** 309639

**Cytogenetics:** 20p12

**MW:** 122.1 kDa