

## Product datasheet for **RR212027**

### Incenp (NM\_001106335) Rat Tagged ORF Clone

#### Product data:

Product Type:	Expression Plasmids
Product Name:	Incenp (NM_001106335) Rat Tagged ORF Clone
Tag:	Myc-DDK
Symbol:	Incenp
Vector:	pCMV6-Entry (PS100001)
E. coli Selection:	Kanamycin (25 ug/mL)
Cell Selection:	Neomycin



[View online »](#)

**ORF Nucleotide Sequence:**

>RR212027 representing NM\_001106335  
 Red=Cloning site Blue=ORF Green=Tags(s)

TTTTGTAATACGACTCACTATAGGGCGGCCGGAATTCGTCGACTGGATCCGGTACCGAGGAGATCTGCC  
 GCC**CGGATCGCC**

ATGGGGACCACAGCCCCAGGGCCTGCTAACCTTCTGGACCTATGTGACCAGAACTCCTGGACTTTGTCT  
 ACAATGTGGACAACAAGGACTTCATGTGGCTTAAGGAGATTGAGGAGGAGCCGAGCGAATGTTTGTGAG  
 AGAATTCACAATGAGCCAGAGCTGATGCCAAAACCTCTCTCAGAAAAACCGTCGGAAGAAGAGGCGG  
 GTGTCTAACATTCAGGATGAAAAACAGAGATCCTGTGAGGAAAAGTTGTCCCGCAGAAAAGTCTCGGAGCA  
 GTCAGGTAGGCCCGGCCACCGCCGAGCAAGCTGGGTGCTGTTGTTGAGGAGAAATGGTTCGCTGTGTT  
 GCGTCGGATAACCCGGGCAGCAGCTGCAGCAGCAGCAGCGGCAGCATCAACGTCAGCGTCTGTGGCATCA  
 GCTTCTTCTTCTCCACTACGGTGTCTCCCATAGTGCTAATCAAAAAAGCTGTGGTAGAGGTAAGCACCG  
 GTGAGCAACTGAGTGCAGAGCTCAACTCATTAGCTCAAAGGTGGCCTTCTCAGTCTTACGTCACCGC  
 TCCAGCCACATCTCAGTTTCCCAAGGCACCCTGACCTCAGAAGAGGAAGCAACACCCAAGAAATCAGAG  
 GCTGGGAGGCTGGACTCTGCCACAGACTCCGTTGCAAGTAACTCCCTCAAGGCTACCCCTCAGAGCCCCA  
 AGAACCGAGGGGTTGGGGAAGCACGTTCTGTTTCCAAGCTCAAGATTGCTCGGGCCTCCAGGGCCCTGCA  
 GGACTCTCCTGGCTCTACGGACTCTCCATGGCAAGAGCGGGTGTCTTCTCCTATTCTGCCGAATAACATC  
 TTGTCCACCACAGCCAAGAACCCTCTTGGGAGTATTCAGTCAGTGCAGCAAAAGCCTGATTTCCAGGATT  
 CCCAAGTGCCATTAGCCAAAAAGTATTGTTTGGTACTCAACAAGAAAATGCCAGTCGCAGATCAAGCAG  
 GATTGCTAAGAAGGCTGGCAAAGAGCCAGAGGCCTCTGCTCGCATCATTGTACAGTTACCTGGAGAGG  
 CTCCTGAATGTTGAAGTGCCTCAGAATGTTGGCCTGGAAAAGGAGCCTGTTGAGGTGGCCGAGCCTGAGG  
 AGCGATAGAGGAGCAAGAGGCTCCAAGAACAGTGGATGTTTCTCCAAACCCACAGTCCACCAAGAT  
 GGCGATCAGTACGCCTACCTCGAAGCCTGTGGCCACTGGCCAGGCAACAGCTGTTGAAGAGCAAGACGCT  
 GAGCTTGACCAAACAGATGGACACAGAGAACCACCCAGAGTGTGAGGAGAAAACGAGTTACAAGCAGG  
 CCATGAGTGAAGTGGATGAGGAGCATCTGGAGGATGAAGAGCTGCAGCCTCCCGGAACAAGACCCCTTC  
 CCCACCTGTCCAGCCAGCAAGGTGGTACGGCCCTCCGGACTTCTTGCACACAGTGCAGAAGAACCAG  
 ATGCTCATGACCCTACTCTGGCCTCCCGCAGCAGTGTGATGAAGTCTTTATTAACGCAACACTCCAC  
 TCCGTGTGGACCTAAGGAGAAGGAGCGCCAGCGCCTAGAGAGCCTCGGGCGGAAGGAGGAGGCCGAGCA  
 GCTGCGCAGACAGAAGGTAGAGGAAGACAAGCGCGCGCCTGGAGGAGTGAAGCTGAAGCGTGAAGAG  
 CGCTCCGCAAGTATTGACAGGCTCGTGAAGCGGTGGAACAGATGAAGGAGGAAAAGAAGAGCAGATTG  
 AGCAGAAGTTTGCTCAGATTGATGAGAAGACAGAGAAGGCTAAGGAGGAGCGGCTGGCAGAGAAGGCCAA  
 GAAGAAGGCGGCCGCAAGAAGATGGAAGAGATGGAGGCGCGCAGGAAGCAGGAGGAGGAGGCGCCAGG  
 CTCAAGTGGCTCCAGCAGGAGGAAGAGGAGCGCGGCATCAAGAAATGCTACAGCGGAAGAAGGAGGAAG  
 AACAGGAGCGCCGAAAGCAGCTGAGGCCAGGCGACTGGCAGAACAGCGTGAAGCAAGAGCGCGGAGAGA  
 GCAAGAACGGAGAGAGCAGGAACGGAGAGAGCAGGAGCGGAGAGAGCAGGAGCGGAGAGCAGGAGCGG  
 AGGGAGCAGGAGCGGAGAGAGCAGGAACGGAGGGAGCAGGAACGACTTCGGGCCAAGAGGGAGATGCAGG  
 AGAGAGAGAAGGCCCTGCGGCTCCAAAAGGAACGACTTCAGAGGGAAGTGAAGAGAAGAAGAAGAAGGA  
 AGAGCAGCAGCGCCTGGCTGAGCAGCAACTGCAGGAGGAGCAGGCAAGAAAGCTAAGGAGGTGGCCGCG  
 GGCAAAGCACTGAACATGACTGTGGATGTGAGTCTCCTGTTTGTACCTCATATCAGATGACTCCACAAG  
 GACCCAAGTCTTTCCCAAGATCAGCATGGATGACTATGGGATGGACCTGAATAGCGATGACTCCACAGA  
 TGATGAGGCCATCCCGGAAACCCATCCCTTCTGGGCCAAAGGCACTCAGCTCAGCCAGGCCATCGTC  
 CACCACTACTACCACCCCAACATTCTAGAGCTCTTCGGATCTATTCTCCACTGGACTTGGAGGACA  
 TCTTTAAGAAGAGGAAGACTCGCTACCACAAGCGCACCAGCTCTGCTGTTTGAAGTACCACCTCTGAA  
 AGCCACCATCCCCAGCAGTGGGGAC

**ACGCGT**ACGGGCGGCTCGAGCAGAACTCATCTCAGAAGAGGATCTGGCAGCAATGATATCCTGGATT  
 ACAAGGATGACGACGATAAGGTTTAA

**Protein Sequence:** >RR212027 representing NM\_001106335  
 Red=Cloning site Green=Tags(s)

```

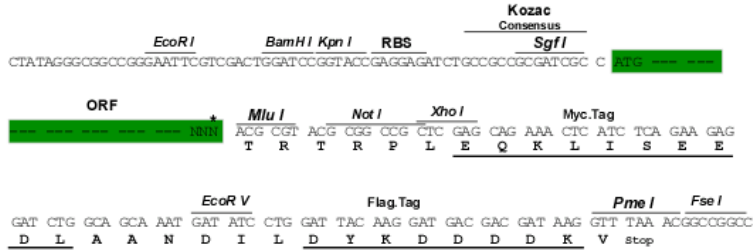
MGTTAPGPANLLDLCDQKLLDFVYNVDNKFMWLKEIEEEAERMFVREFNNEPELMPKTPSQKNRRKKRR
VSNIQDENRDPVRKRLSRRKSRSSQVGRHRRSKLGAVVEENGSPVLRRI TRAAAAAAAAAASVSASVAS
ASSSPTTVSPIVLIKKAVVEVSTGEQLSAELQLIKLKGGLPQSSVPAPATSSVSQGTLTSEEEATPKKSE
AGRLDSATDSVAVNSLKATPQSPKNRGVGEARSVSKLKIARASRGLQDSPGSTDSPWQERVLSPILPNNI
LSTTAKNPLGSIQSVQQSLISQDSQVPLAKKYCLVTQQENASRRSSRIAKKAGKEPEASARIICHSYLER
LLNVEVPQNVGLEKEPVEVAEPEEAVEEQEVSKNSGCSKPHSATKMAISTPTSKPVATGQATAVEEQDA
ELDQTDGHRPEPPQSVRRKRSYQAMSELDEEHLEDEELQPPRNKTPSPPCPASKVVRPLRTFLHTVQKNQ
MLMTPTLASRSSVMKSFIKRNTPLRVPKKEKERQRLSRLRKEEAEQLRRQKVEEDKRRRLEEVLKREE
RLRKVLQARERVEQMKEEKKQIEQKFAQIDEKTEKAKEERLAEKAKKAAAKKMEEMEARRKQEEEARR
LKWLQEEEEERRHQEMLQRKKEEQERRKAAEARRLAEQREQERRREQERREQERREQERREQERREQER
REQERREQERREQERLRAKREMQEREKALRLQKERLQRELEEKKKKEEQRLAEQQLQEEQAKKAKEVAA
GKALNMTVDVQSPVCTSYQMPQGPFSFKISMDYGM DLNSDDSTDDEAHPKPIPSWAKGTQLSQAIIV
HQYYHPPNILELFGSILPLDLEIFKKRTRYHKRTSSAVWNSPPLKATIPSSGD
  
```

TRTRPLEQKLISEEDLAANDILDYKDDDDKV

**Restriction Sites:** Sgfl-Mlul

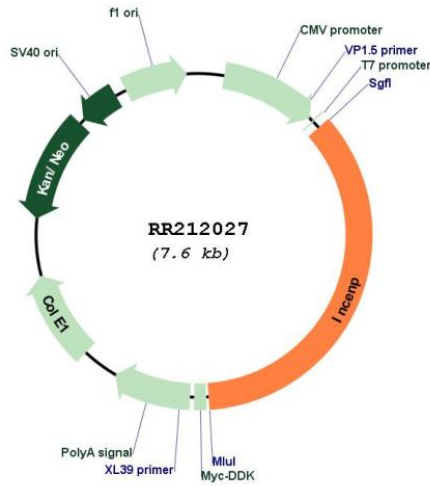
Cloning Scheme:

Cloning sites used for ORF Shuttling:



\* The last codon before the Stop codon of the ORF

Plasmid Map:



<b>ACCN:</b>	NM_001106335
<b>ORF Size:</b>	2685 bp
<b>OTI Disclaimer:</b>	The molecular sequence of this clone aligns with the gene accession number as a point of reference only. However, individual transcript sequences of the same gene can differ through naturally occurring variations (e.g. polymorphisms), each with its own valid existence. This clone is substantially in agreement with the reference, but a complete review of all prevailing variants is recommended prior to use. <a href="#">More info</a>
<b>OTI Annotation:</b>	This clone was engineered to express the complete ORF with an expression tag. Expression varies depending on the nature of the gene.
<b>Components:</b>	The ORF clone is ion-exchange column purified and shipped in a 2D barcoded Matrix tube containing 10ug of transfection-ready, dried plasmid DNA (reconstitute with 100 ul of water).
<b>Reconstitution Method:</b>	<ol style="list-style-type: none"> <li>1. Centrifuge at 5,000xg for 5min.</li> <li>2. Carefully open the tube and add 100ul of sterile water to dissolve the DNA.</li> <li>3. Close the tube and incubate for 10 minutes at room temperature.</li> <li>4. Briefly vortex the tube and then do a quick spin (less than 5000xg) to concentrate the liquid at the bottom.</li> <li>5. Store the suspended plasmid at -20°C. The DNA is stable for at least one year from date of shipping when stored at -20°C.</li> </ol>
<b>RefSeq:</b>	<a href="#">NM_001106335.1</a> , <a href="#">NP_001099805.1</a>
<b>RefSeq Size:</b>	3154 bp
<b>RefSeq ORF:</b>	2688 bp
<b>Locus ID:</b>	293733
<b>Cytogenetics:</b>	1q43
<b>MW:</b>	102.6 kDa